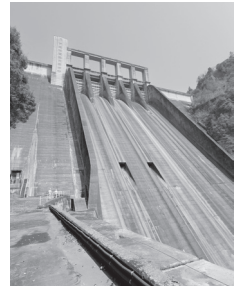




HAMAMATSU



Information Bulletin
HAMAMATSU
May 2026 Cover

HAMAMATSU CITY

The Information Bulletin Hamamatsu is available on our website.
*The QR Code is a registered trademark of DENSOWAVE Inc.

Hamamatsu population: 775,457
Foreign resident population: 30,985
(Population figures as of 4 2026)

*This bulletin contains selected information from the Japanese edition published by City Hall. *The telephone numbers listed in this bulletin will all be answered in Japanese only.

Information Bulletin Hamamatsu Plus

The website for Information Bulletin Hamamatsu has machine translation available (supports 100 languages and Plain Japanese)



CANAL HAMAMATSU

At Canal Hamamatsu, Hamamatsu City's official multilingual information website, you can find information to assist your daily life in 6 languages and Plain Japanese.



◆ ◆ ◆ INFORMATION (お知らせ) ◆ ◆ ◆

Issuing of Municipal and Prefectural Tax Certificates for FY2026

< 令和8年度 市・県民税の証明書交付開始 >

When: June 11 (Thu)

Certificate Type: Income Certificate, Tax Certificate

What to Bring: A form of identification, such as a My Number card or driver's license (if you are representing someone else, you will also need a power of attorney form)

Cost: ¥350 per copy

※If you use the municipal and prefectural tax certificate issuance service at a convenience store it is 200 yen per certificate.

You will need your My Number Card and your 4-digit PIN to use this service

City Website ▶

Municipal Tax Division (Shiminzei-ka) ☎457-2144



Light Motor (Kei Car) Tax

< 軽自動車税(種別割) >

Tax Deadline: June 1 (Mon), 2026

Pay your taxes conveniently via bank transfer!

City Website ▶



Inquiries:

About paymentTax General Affairs Division (Zeimu Sōmu-ka) ☎457-2261

Tax detailsMunicipal Tax Division (Shiminzei-ka) ☎457-2077

As a General Rule, It Is No Longer Necessary to Present a Light Motor (Kei Car) Tax Payment Certificate During Vehicle Inspections

< 車検での軽自動車税納税証明書の提示が原則不要となりました >

With the introduction of Kei JNKS ("jenks"), you can now check your payment status online. And as a general rule, you are no longer required to present a tax payment certificate during vehicle inspections. Consequently, the mailing of light motor vehicle tax payment certificates to those who paid via direct debit or cashless methods has been discontinued as of the fiscal year 2025.

If you need a tax payment certificate, please obtain it at the city's certificate issuance counter.

City Website ▶

Tax General Affairs Division (Zeimu Sōmu-ka) ☎457-2261



Consultations for Foreign Residents (Free)

< 外国人のための相談会(無料) >

Details	Date	Time
① Mediatory Consultations between Foreign and Japanese People with an Administrative Scrivener (Alternative Dispute Resolution)	June 6 (Sat)	13:00 - 16:00
② Consultations with a Lawyer	June 13 (Sat), 25 (Thu)	
③ Consultations with a Labor and Social Insurance Consultant	June 18 (Thu)	
④ Consultations about Residence Status	July 2 (Thu)	

Venue: CREATE Hamamatsu (*Hayauma-cho, Chuo-ku*)

Application: In person or by telephone (on a first come, first served basis)

Website ▶

Intercultural Center (*Tabunka Kyōsei Sentā*) ☎458-2170



Subsidy for Rubella Antibody Testing Cost

< 風しん抗体検査の費用助成 >

Family members who are living with women who wish to become pregnant or are currently pregnant can receive a rubella antibody test free of charge upon request.

Period: Until March 31 (Wed), 2027

Application: By phone or through the city's website. Once you receive your free health examination voucher, please make an appointment directly with the medical institution.

※ People who have previously received public assistance and rubella antibody testing are not eligible.

City Website ▶



Inquiries			
Chuo Health Promotion Center	☎457-2891	Hamana Health Promotion Center	☎585-1171
Chuo Health Promotion Center (Higashi)	☎424-0125	Hamana Health Promotion Center (Kita)	☎523-3121
Chuo Health Promotion Center (Nishi)	☎597-1120	Tenryu Health Promotion Center	☎925-3142
Chuo Health Promotion Center (Minami)	☎425-1590		

Infectious Disease Control Division (*Kansenshō Taisaku-ka*) ☎453-6108

Health Check-up for Infants Aged 18 Months and Three Years

< 1歳6カ月児健康診査・3歳児健康診査 >

Physical check-ups, medical check-ups, dental check-ups, and childcare consultations.

※ Notifications will be mailed to eligible individuals. If you move into the city from outside of, or relocate within the city and the mail does not reach you, please contact your nearest center.

Inquiries ※Please contact your nearest center			
Chuo Health Promotion Center	☎457-2890	Hamana Health Promotion Center	☎585-1120
Chuo Health Promotion Center (Higashi)	☎424-0122	Hamana Health Promotion Center (Kita)	☎523-3121
Chuo Health Promotion Center (Nishi)	☎597-1174	Tenryu Health Promotion Center	☎922-0075
Chuo Health Promotion Center (Minami)	☎425-1590		

Website ▶



Website ▶



Public Health Promotion Division (*Kenkō Zoshin-ka*) ☎453-6115

Photochemical Oxidants and PM2.5 Warning

< 光化学オキシダントおよびPM2.5にご注意ください >

Hamamatsu City will issue a “photochemical oxidant warning” or “PM2.5 warning” if there is a rise in the concentration of photochemical oxidants or PM2.5 in the air which pose a potential health risk. If a warning is issued, please follow the precautions below to protect your health.

Precautions in the event of a photochemical oxidants or PM2.5 warning	
Photochemical Oxidants Warning	PM2.5 Warning Information
Refrain from long periods of intense exercise outdoors	
If you feel any irritation in your eyes or pain in your throat, wash your eyes or gargle as necessary	People with respiratory or circulatory diseases, children, and the elderly should take extra precaution
To reduce vehicle emissions, refrain from driving. Stop unnecessary idling	Refrain from indoor ventilation and opening windows
※Warnings and information will be issued via Hamamatsu City Disaster Prevention radio, Hamamatsu-shi Bosai Hot Mail (浜松市防災ホットメール) and the Hamamatsu City official website.	

City Website ▶

Environmental Protection Division (Kankyō Hozen-ka) ☎453-6170



Act City (Cultural Promotion Foundation)

< アクトシティ(文化振興財団) >

① Promenade Concert (Cancelled in Case of Rain)

Date	Performances	Venue
May 30 (Sat) 15:00 – 16:40	Inasa Nanbu Junior High School, Hamana High School, Hamamatsu Municipal Senior High School	JR Hamamatsu Station North Exit Kitara Plaza
June 13 (Sat) 15:00 – 16:50	Sakuma Wind Orchestra Club, Inasa Wind Orchestra, Hamamatsu Symphonic Wind Orchestra	

② Traveling Promenade Concert (Cancelled in Case of Rain)

Date	Performances	Venue
May 31 (Sun) 15:00 – 16:00	Yuto Junior High School, Hamamatsu Iwata Shinkin Bank Wind Orchestra	Flower Park

③ Lively Downtown Concert (Cancelled in Case of Rain)

Date	Performances	Venue
June 7 (Sun) 15:00 – 17:00	Japanese drum concert by a Local Wadaiko Group	JR Hamamatsu Station North Exit Kitara Plaza

Website ▶

(Itaya-machi, Chuo-ku) ☎451-1151



Summer Festival 2026

< 夏フェスタ2026 >

Date: June 20 (Sat) 13:00 – 16:00

Website ▶

HAMAMATSU PREFECTURAL DISASTER-PREVENTION LEARNING CENTER
(Yamashita-cho, Chuo-ku) ☎474-8555



Lower Tenryu River Joint Comprehensive Flood-Prevention Drill

< 天竜川下流連合総合水防演習 >

Date: May 31 (Sun) 9:00 – 11:00 ※No postponement even in case of light rain

Venue: The riverbed upstream of the Kasasagi Bridge on the right bank of the Tenryu River

City Website ▶

Waterways Division (*Kaikei-ka*) ☎457-2452



Hamamatsu Fruit Park Tokinosumika

< フルーツパーク時之栖 >

Details	Date
① Child Rearing Support Day	Until May 31 (Sun) 9:30 – 15:00
② Evening of Fireflies	① May 29 (Fri) - May 31 (Sun) ② June 5 (Fri) - June 7 (Sun) ③ June 12 (Fri) - June 14 (Sun) 19:30 – 20:30
③ Morning Market	June 6 (Sat) 9:00 – 11:30
④ Night Bubble Event	June 6 (Sat) 19:00 onward
⑤ Child Rearing Support Day	June 10 (Wed)
⑥ Large Plum Harvest Experience	Late May to mid-June

Website ▶

(Miyakoda-chō, Hamana-ku) ☎428-5211



Hamamatsu Flower Park

< フラワーパーク >

Details	Date
① Weird Cactus Exhibition “It’s interesting because it’s unusual.”	May 23 (Sat) - May 31 (Sun) 9:00 – 17:00 ※Open until 16:30 on May 31 (Sun)
② Lake Hamana Flower Festival 2026 Final Event	June 6 (Sat) 19:00 – 20:00 ※In case of rain, the event will be postponed to June 7 (Sun)
③ Flower Walk	June 13 (Sat) 10:00 – 12:00
④ Nature Observation Gathering: From Fresh Greenery to the Summer Solstice	June 20 (Sat) 10:00 – 11:30 ※Cancelled in Case of Rain

Website ▶

(Kanzanji-chō, Chuo-ku) ☎487-0511



Hamamatsu Information Bulletin

Edited by: HAMAON, Inc.
Published by: Public Opinion and Relations Division
(Kōchō Kōhō-ka) ☎ 053-457-2021

Date of publication: May 2026
(Published once a month)
Printing: 1,700 copies