

# Ward names for addresses

other than Tenryu Ward will change.

- Postal code, neighborhood name, and street address will not change -

City Name	Ward Name		Neighborhood Name/Street Address
Hamamatsu-shi	Until December 31, 2023	From January 1, 2024	〇〇-cho, 〇〇-banchi
	Naka-ku Higashi-ku Nishi-ku Minami-ku Kita-ku (Mikatahara district*)	Chuo-ku	
	Kita Ward (excluding Mikatahara district*) Hamakita-ku	Hamana-ku	
	Tenryu-ku	Tenryu-ku (No changes)	

\*Mikatahara district: Hatsuoi-cho, Mikatahara-cho, Higashimikata-cho, Toyooka-cho, Miyuki-cho, Ohara-cho, Nearai-cho

103-2, Motoshiro-cho,  
Chuo-ku, Hamamatsu-shi

Hamamatsu City Hall

Send New-Year's cards using new address!


Telephone numbers and school districts for elementary and junior-high schools will not be affected.

**More Detail**

For a table of neighborhood name and their respective Administrative Centers See [Page 6](#)

For address changes due to a change in ward name [Page 8](#)

The city conducted "ward name candidate recruitment" and "ward name questionnaire" from July to October 2022, and received responses from many residents. We will introduce some of the thoughts of residents regarding the ward names that were submitted.



Ieyasu-kun © Hamamatsu City

Residents' Thoughts on ward names

We received many applications from residents!

Chuo-ku	<ul style="list-style-type: none"> <li>◆ A place where urban functions are concentrated, and we hope it will become a catalyst of growth for greater Hamamatsu</li> <li>◆ Projects the image of each ward consolidating and becoming one</li> </ul>
Hamana-ku	<ul style="list-style-type: none"> <li>◆ A historic name that connects Lake Okuhamana, the mountains of Miyakoda, and the west bank of the Tenryu River</li> <li>◆ Represents the desire for the area to inherit the nature of Lake Hamana and the history of Hamana District, and become a region where nature and technology coexist</li> </ul>



# The names of service provision centres

such as ward offices will change

- Location and services provided will not change -

## Ward Offices and Administrative Centers



**Administrative Centers (formerly Ward Offices) will provide the same services as Ward Offices.**

Until December 31, 2023		From January 1, 2024	
Name		Name	Address
Government Building	Naka Ward Office	Chuo Ward Office	Chuo-ku
	Higashi Ward Office	Higashi Administrative Center	
	Nishi Ward Office	Nishi Administrative Center	
	Minami Ward Office	Minami Administrative Center	Hamana-ku
	Hamakita Ward Office	Hamana Ward Office	
	Kita Ward Office	Kita Administrative Center	Tenryu-ku
	Tenryu Ward Office	Tenryu Ward Office (No changes)	

## Branch Office, Community Collaboration Center, Fureai Community Center, Municipal Services Center

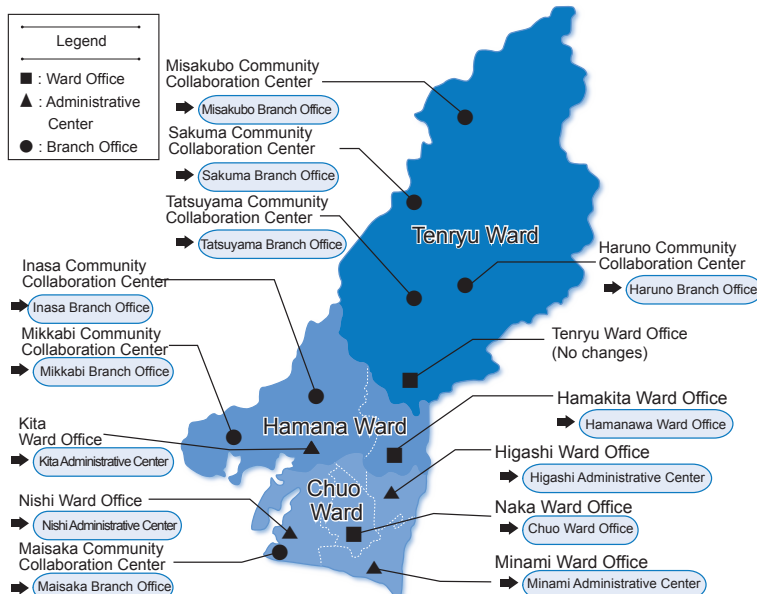


**Some names will change, but services provided will remain the same as before the reorganization.**

Until December 31, 2023		From January 1, 2024	
Name		Name	Address
Government Building	Community Collaboration Center Maisaka, Inasa, Mikkabi, Haruno, Sakuma, Misakubo, Tatsuyama	OO Branch Office	No changes
	Other than above	No changes*	
	Fureai Community Center	No changes	
	Municipal Services Center	No changes	

\*Tenryu Ward's "Futamata Community Collaboration Center" will be renamed "Futamata Fureai Community Center".

## ◆ Location and Names of Ward Offices, Administrative Centers, and Branch Offices



**More Detail**

For main operations and contact information for ward offices, administrative centers, and branch offices

See [Page 12](#)

---

For procedure items and handling locations by life stage

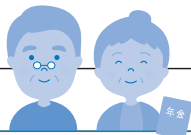
[Page 22](#)



## Public Works Maintenance Office

Main services changed by ward reorganization

Name		Area of Jurisdiction	Facility Location
<b>Chuo Public Works Maintenance Office</b> ☎457-1012		Chuo Ward Outside of the jurisdictional area of the Branch Office	Minami Public Works Maintenance Office (Kitaterajima-cho) before reorganization
Branch Office	<b>Higashi</b> ☎424-0165	Higashi Ward before reorganization	In the Higashi Administrative Center building
	<b>Nishi</b> ☎597-1129	Nishi Ward before reorganization	In the Nishi Administrative Center building
	<b>Mikatahara</b> ☎436-2551	Mikatahara, Hagioka district	Kita Public Works Maintenance Office (Higashimikata-cho) before reorganization
<b>Hamana Public Works Maintenance Office</b> ☎523-2970		Hamana Ward Outside of the jurisdictional area of the Branch Office	In the Kita Administrative Center building
Branch Office	<b>Hamakita</b> ☎585-1113	Hamakita Ward before reorganization	In the Hamana Ward Office building
	<b>Mikkabi</b> ☎523-8888	Mikkabi district	In the Mikkabi Branch Office <b>Newly established</b>
<b>Tenryu Public Works Maintenance Office</b> ☎926-1561		Tenryu Ward Outside of the jurisdictional area of the Branch Office	In the Tenryu Ward Office, South Hall
Branch Office	<b>Haruno</b> ☎983-0003	Haruno district	In the Haruno Branch Office
	<b>Sakuma</b> ☎966-0003	Sakuma district	In the Sakuma Branch Office
	<b>Misakubo</b> ☎982-0007	Misakubo district	In the Misakubo Branch Office



## Pension Office

Pension Office	Area of Jurisdiction		
	National Pension (changes as follows)		Employee Pension Insurance (same as before reorganization)
	After reorganization	Before reorganization	
<b>Hamamatsu Nishi Pension Office</b> ☎456-8511(Rep.)	Chuo Ward	Naka/Nishi/Kita Ward before reorganization	Naka/Nishi/Kita Ward before reorganization
<b>Hamamatsu Higashi Pension Office</b> ☎421-0192(Rep.)	Hamana Ward	Higashi/Minami/Hamakita Ward before reorganization	Higashi/Minami/Hamakita Ward before reorganization
	Tenryu Ward	Tenryu Ward	Tenryu Ward

Pension consultations and applications can be received at any pension office.



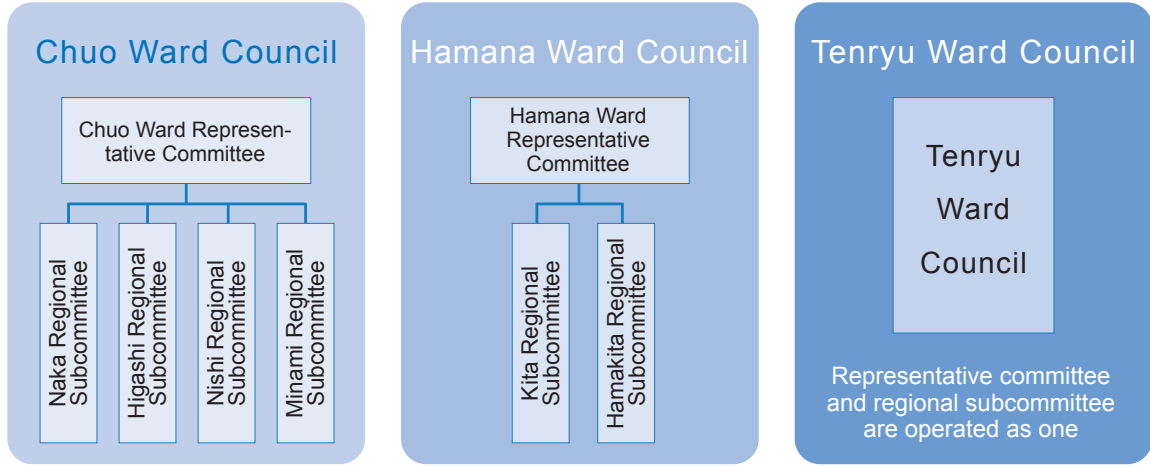
## Tax Office (No changes)

Tax Office	Area of Jurisdiction (same as before reorganization)
<b>Hamamatsu Nishi Tax Office</b> ☎555-7111(Rep.)	Naka/Nishi/Kita Ward before reorganization
<b>Hamamatsu Higashi Tax Office</b> ☎458-1111(Rep.)	Higashi/Minami/Hamakita Ward before reorganization
	Tenryu Ward

Three ward councils, representative committees and regional subcommittees will be established

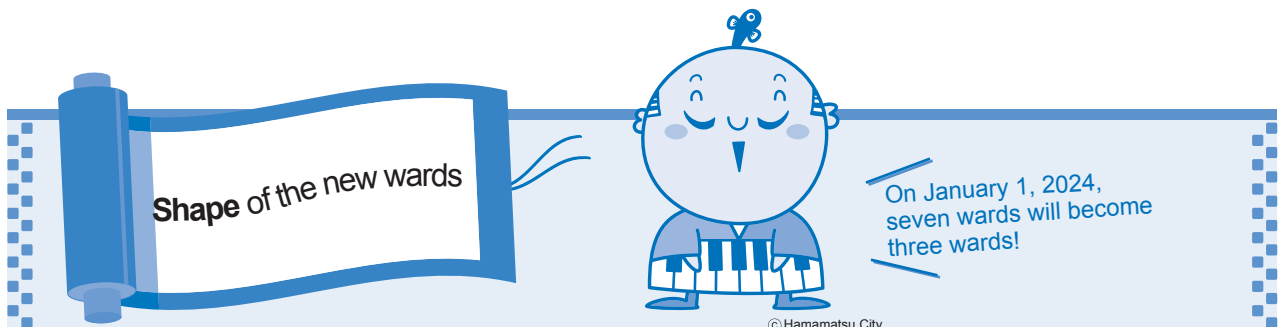
- There are currently seven ward councils, one for each ward, but after reorganization there will be three to match the number of wards. They will consist of representative committees and regional subcommittees (Tenryu Ward operates the representative board and regional subcommittees as one).

### 3 Ward Councils



District Community Council (can be established voluntarily according to local wishes)

- District Community Councils can be voluntarily established as organizations to discuss regional issues, based on local wishes, and they can make proposals regarding community development to the ward council.



Ward Name	Ward District	Population	Number of Households	Area
Chuo Ward	Naka/Higashi/Nishi/Minami/ Kita Ward (Mikatahara district) before reorganization	608,145 people	279,740 households	268.45km <sup>2</sup>
Hamana Ward	Kita Ward before reorganization (excluding Mikatahara district), Hamakita Ward	155,996 people	63,131 households	345.77 km <sup>2</sup>
Tenryu Ward	Tenryu Ward (No area changes)	25,681 people	11,926 households	943.84km <sup>2</sup>
Total		789,822 people	354,797 households	1,558.06km <sup>2</sup>

Source Population/number of households: Number of households/population by Hamamatsu ward/neighborhood (as of October 1, 2023, according to the basic resident register)  
 Area: Calculated by adding and subtracting (rounded to the third decimal place) the area by district of the Mikatahara district in the 2022 Hamamatsu City Statistical Report "Land/Weather\_Area by Neighborhood, Population" from the Geospatial Information Authority of Japan 2023 Survey of Area by Prefecture, City, Ward, Town, and Village.