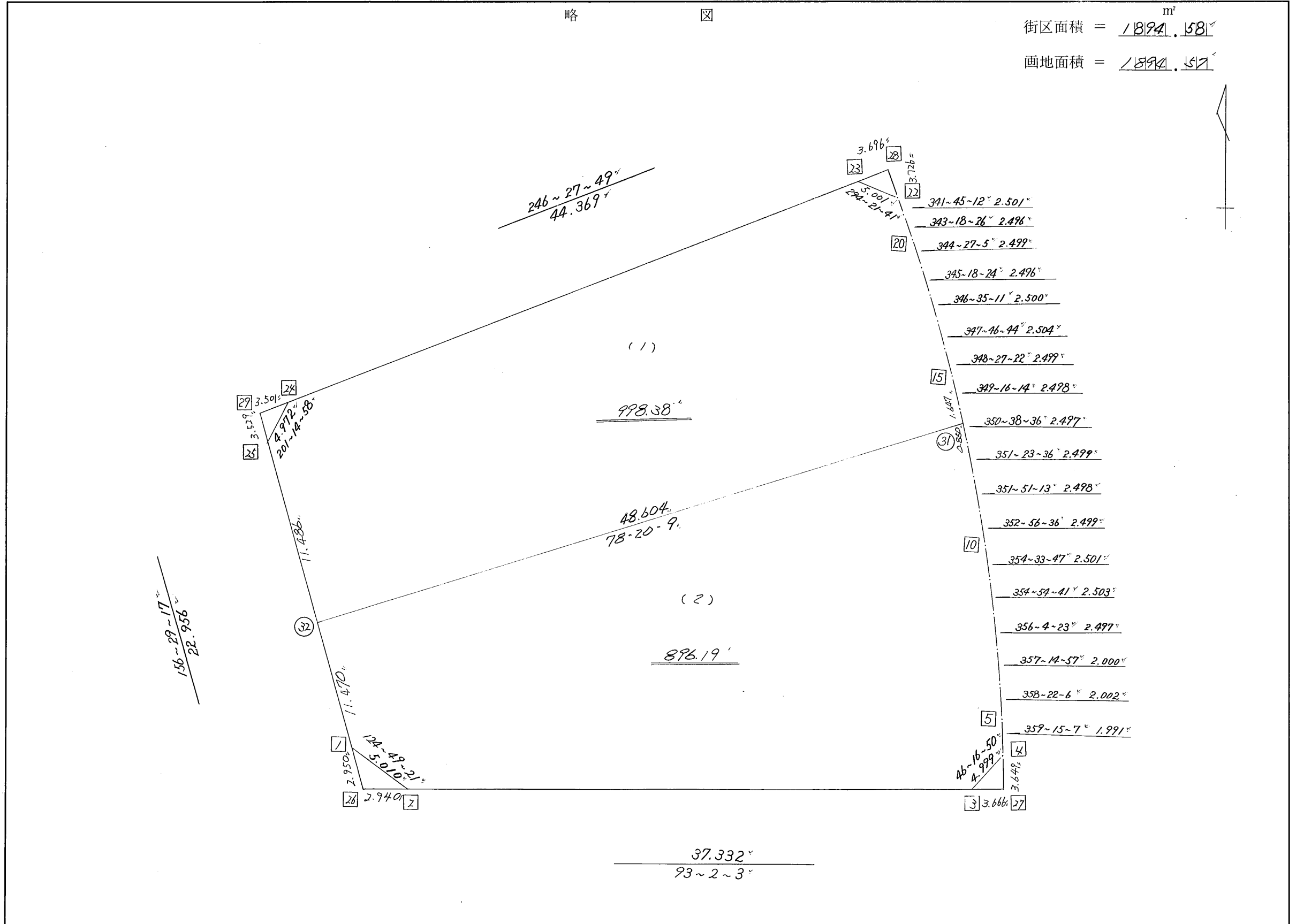


略 図

街区面積 =  $\frac{1894.58}{m^2}$   
 画地面積 =  $\frac{1894.51}{m^2}$



街区点番号 1 ~ 29 筆界点番号 (31) ~ (32) 画地番号 (1) ~ (2)

\*\*\* メンセキ ケイサン (ハイオウキヨホウ) \*\*\*

チクメイ ... ミヤコタチク トチクカクセイリシキヨウ

セリ NO... 80BL

| NO.     | NO.     | ANGLE     | AZIMUTH   | LENGTH | DX      | * | DY      | * | X           | Y          | DMD    | 2A          | カーブメンセキ |
|---------|---------|-----------|-----------|--------|---------|---|---------|---|-------------|------------|--------|-------------|---------|
| 80BL-25 | 80BL- 1 |           | 156 29 17 |        |         |   |         |   | -130956.441 | -69307.952 |        |             |         |
| 80BL- 1 | 80BL- 2 | 148 20 4  | 124 49 21 | 5.010  | -2.861  | 0 | 4.113   | 0 | -130959.302 | -69303.839 | 13.271 | -37.968331  |         |
| 80BL- 2 | 80BL- 3 | 148 12 42 | 93 2 3    | 37.332 | -1.976  | 0 | 37.280  | 0 | -130961.278 | -69266.559 | 54.664 | -108.016064 |         |
| 80BL- 3 | 80BL- 4 | 133 14 47 | 46 16 50  | 4.999  | 3.455   | 0 | 3.613   | 0 | -130957.823 | -69262.946 | 95.557 | 330.149435  |         |
| 80BL- 4 | 80BL- 5 | 132 58 17 | 359 15 7  | 1.991  | 1.991   | 0 | -0.026  | 0 | -130955.832 | -69262.972 | 99.144 | 197.395704  |         |
| 80BL- 5 | 80BL- 6 | 179 6 59  | 358 22 6  | 2.002  | 2.001   | 0 | -0.057  | 0 | -130953.831 | -69263.029 | 99.061 | 198.221061  |         |
| 80BL- 6 | 80BL- 7 | 178 52 51 | 357 14 57 | 2.000  | 1.998   | 0 | -0.096  | 0 | -130951.833 | -69263.125 | 98.908 | 197.618184  |         |
| 80BL- 7 | 80BL- 8 | 178 49 26 | 356 4 23  | 2.497  | 2.491   | 0 | -0.171  | 0 | -130949.342 | -69263.296 | 98.641 | 245.714731  |         |
| 80BL- 8 | 80BL- 9 | 178 50 18 | 354 54 41 | 2.503  | 2.493   | 0 | -0.222  | 0 | -130946.849 | -69263.518 | 98.248 | 244.932264  |         |
| 80BL- 9 | 80BL-10 | 179 39 6  | 354 33 47 | 2.501  | 2.490   | 0 | -0.237  | 0 | -130944.359 | -69263.755 | 97.789 | 243.494610  |         |
| 80BL-10 | 80BL-11 | 178 22 49 | 352 56 36 | 2.499  | 2.480   | 0 | -0.307  | 0 | -130941.879 | -69264.062 | 97.245 | 241.167600  |         |
| 80BL-11 | 80BL-12 | 178 54 37 | 351 51 13 | 2.498  | 2.473   | 0 | -0.354  | 0 | -130939.406 | -69264.416 | 96.584 | 238.852232  |         |
| 80BL-12 | 80BL-13 | 179 32 23 | 351 23 36 | 2.499  | 2.471   | 0 | -0.374  | 0 | -130936.935 | -69264.790 | 95.856 | 236.860176  |         |
| 80BL-13 | 80BL-14 | 179 15 0  | 350 38 36 | 2.497  | 2.464   | 0 | -0.406  | 0 | -130934.471 | -69265.196 | 95.076 | 234.267264  |         |
| 80BL-14 | 80BL-15 | 178 37 38 | 349 16 14 | 2.498  | 2.454   | 0 | -0.465  | 0 | -130932.017 | -69265.661 | 94.205 | 231.179070  |         |
| 80BL-15 | 80BL-16 | 179 11 8  | 348 27 22 | 2.499  | 2.448   | 0 | -0.500  | 0 | -130929.569 | -69266.161 | 93.240 | 228.251520  |         |
| 80BL-16 | 80BL-17 | 179 19 22 | 347 46 44 | 2.504  | 2.447   | 0 | -0.530  | 0 | -130927.122 | -69266.691 | 92.210 | 225.637870  |         |
| 80BL-17 | 80BL-18 | 178 48 27 | 346 35 11 | 2.500  | 2.432   | 0 | -0.580  | 0 | -130924.690 | -69267.271 | 91.100 | 221.555200  |         |
| 80BL-18 | 80BL-19 | 178 43 13 | 345 18 24 | 2.496  | 2.414   | 0 | -0.633  | 0 | -130922.276 | -69267.904 | 89.887 | 216.987218  |         |
| 80BL-19 | 80BL-20 | 179 8 41  | 344 27 5  | 2.499  | 2.408   | 0 | -0.670  | 0 | -130919.868 | -69268.574 | 88.584 | 213.310272  |         |
| 80BL-20 | 80BL-21 | 178 51 21 | 343 18 26 | 2.496  | 2.391   | 0 | -0.717  | 0 | -130917.477 | -69269.291 | 87.197 | 208.488027  |         |
| 80BL-21 | 80BL-22 | 178 26 46 | 341 45 12 | 2.501  | 2.375   | 0 | -0.783  | 0 | -130915.102 | -69270.074 | 85.697 | 203.530375  |         |
| 80BL-22 | 80BL-23 | 132 36 29 | 294 21 41 | 5.001  | 2.063   | 0 | -4.556  | 0 | -130913.039 | -69274.630 | 80.358 | 165.778554  |         |
| 80BL-23 | 80BL-24 | 132 6 8   | 246 27 49 | 44.369 | -17.718 | 0 | -40.678 | 0 | -130930.757 | -69315.308 | 35.124 | -622.327032 |         |

\*\*\* メンセキ ケイサン (ハイオウキヨホウ) \*\*\*

手クメイ ... ミヤコタチク トチクカクセイリシキヨウ

セイリ NO... 80BL

| NO.      | NO.        | ANGLE     | AZIMUTH   | LENGTH  | DX      | * | DY     | * | X           | Y          | DMD     | 2A          | カ-フ"メンセキ |
|----------|------------|-----------|-----------|---------|---------|---|--------|---|-------------|------------|---------|-------------|----------|
| 80BL-24  | 80BL-25    | 134 47 9  | 201 14 58 | 4.972   | -4.634  | 0 | -1.802 | 0 | -130935.391 | -69317.110 | -7.356  | 34.087704   |          |
| 80BL-25  | 80BL-1     | 135 14 19 | 156 29 17 | 22.956  | -21.050 | 0 | 9.158  | 0 | -130956.441 | -69307.952 | 0.000   | 0.000000    |          |
| TOTAL... | ソツカクスク= 25 | 4140      | 0 0       | 168.119 | 0.000   | 0 | 0.000  | 0 |             |            |         |             |          |
|          |            |           |           |         |         |   |        |   |             |            | ハイメンセキ= | 3789.167644 |          |
|          |            |           |           |         |         |   |        |   |             |            | 1/2=    | 1894.58     | +0.00    |
|          |            |           |           |         |         |   |        |   |             |            | メンセキ=   | 1894.58     |          |

\*\*\* メンセキ カイサン (ハイオウキヨホウ) \*\*\*

チクメイ ... ミヤコタチク トチクカクセイリシキヨウ

レイリ NO... 80BL(1)✓

| NO.     | INO.       | ANGLE     | AZIMUTH     | LENGTH   | DX      | *   | DY      | *   | X           | Y          | DMD     | 2A          | カーブメンセキ |
|---------|------------|-----------|-------------|----------|---------|-----|---------|-----|-------------|------------|---------|-------------|---------|
| 80BL-25 | 80BL-32 ✓  |           | 156 29 17   |          |         |     |         |     | -130945.923 | -69312.528 |         |             |         |
| 80BL-32 | 80BL-31 ✓  | 101 50 52 | 78 20 9 ✓   | 48.604 ✓ | 9.827   | 0   | 47.600  | 0   | -130936.096 | -69264.928 | 52.182  | 512.792514  |         |
| 80BL-31 | 80BL-14 ✓  | 92 18 27  | 350 38 36 ✓ | 1.647 ✓  | 1.625   | 0   | -0.268  | 0   | -130934.471 | -69265.196 | 99.514  | 161.710250  |         |
| 80BL-14 | 80BL-15 ✓  | 178 37 38 | 349 16 14 ✓ | 2.498 ✓  | 2.454   | 0   | -0.465  | 0   | -130932.017 | -69265.661 | 98.781  | 242.408574  |         |
| 80BL-15 | 80BL-16 ✓  | 179 11 8  | 348 27 22 ✓ | 2.499 ✓  | 2.448   | 0   | -0.500  | 0   | -130929.569 | -69266.161 | 97.816  | 239.453568  |         |
| 80BL-16 | 80BL-17 ✓  | 179 19 22 | 347 46 44 ✓ | 2.504 ✓  | 2.447   | 0   | -0.530  | 0   | -130927.122 | -69266.691 | 96.786  | 236.835342  |         |
| 80BL-17 | 80BL-18 ✓  | 178 48 27 | 346 35 11 ✓ | 2.500 ✓  | 2.432   | 0   | -0.580  | 0   | -130924.690 | -69267.271 | 95.676  | 232.684032  |         |
| 80BL-18 | 80BL-19 ✓  | 178 43 13 | 345 18 24 ✓ | 2.496 ✓  | 2.414   | 0   | -0.633  | 0   | -130922.276 | -69267.904 | 94.463  | 228.033682  |         |
| 80BL-19 | 80BL-20 ✓  | 179 8 41  | 344 27 5 ✓  | 2.499 ✓  | 2.408   | 0   | -0.670  | 0   | -130919.868 | -69268.574 | 93.160  | 224.329280  |         |
| 80BL-20 | 80BL-21 ✓  | 178 51 21 | 343 18 26 ✓ | 2.496 ✓  | 2.391   | 0   | -0.717  | 0   | -130917.477 | -69269.291 | 91.773  | 219.429243  |         |
| 80BL-21 | 80BL-22 ✓  | 178 26 46 | 341 45 12 ✓ | 2.501 ✓  | 2.375   | 0   | -0.783  | 0   | -130915.102 | -69270.074 | 90.273  | 214.398375  |         |
| 80BL-22 | 80BL-23 ✓  | 132 36 29 | 294 21 41 ✓ | 5.001 ✓  | 2.063   | 0   | -4.556  | 0   | -130913.039 | -69274.630 | 84.934  | 175.218842  |         |
| 80BL-23 | 80BL-24 ✓  | 132 6 8   | 246 27 49 ✓ | 44.369 ✓ | -17.718 | 0   | -40.678 | 0   | -130930.757 | -69315.308 | 39.700  | -703.404600 |         |
| 80BL-24 | 80BL-25 ✓  | 134 47 9  | 201 14 58 ✓ | 4.972 ✓  | -4.634  | 0   | -1.802  | 0   | -130935.391 | -69317.110 | -2.780  | 12.882520   |         |
| 80BL-25 | 80BL-32 ✓  | 135 14 19 | 156 29 17 ✓ | 11.486 ✓ | -10.532 | 0   | 4.582   | 0   | -130945.923 | -69312.528 | 0.000   | 0.000000    |         |
| TOTAL.. | ソツカクスウ= 14 | 2160      | 0 0         | 136.072  | 0.000   | 0 ✓ | 0.000   | 0 ✓ |             |            | ハイメンセキ= | 1996.771622 |         |
|         |            |           |             |          |         |     |         |     |             |            | 1/2=    | 998.38      | +0.00   |
|         |            |           |             |          |         |     |         |     |             |            | メンセキ=   | 998.38 ✓    |         |

\*\*\* メンセキ ケイサン (ハライオウキヨホウ) \*\*\*

チクメイ ... ミヤコタチク トチクカクセイリシキヨウ

| NO.      | NO.        | ANGLE     | AZIMUTH     | LENGTH   | DX      | *   | DY      | *   | X           | Y          | DMD      | 2A          | カーブメンセキ |
|----------|------------|-----------|-------------|----------|---------|-----|---------|-----|-------------|------------|----------|-------------|---------|
| 80BL-32  | 80BL- 1'✓  |           | 156 29 17   |          |         |     |         |     | -130956.441 | -69307.952 |          |             |         |
| 80BL- 1  | 80BL- 2'✓  | 148 20 4  | 124 49 21'✓ | 5.010'✓  | -2.861  | 0   | 4.113   | 0   | -130959.302 | -69303.839 | 8.689    | -24.859229  |         |
| 80BL- 2  | 80BL- 3'✓  | 148 12 42 | 93 2 3'✓    | 37.332'✓ | -1.976  | 0   | 37.280  | 0   | -130961.278 | -69266.559 | 50.082   | -98.962032  |         |
| 80BL- 3  | 80BL- 4'✓  | 133 14 47 | 46 16 50'✓  | 4.999'✓  | 3.455   | 0   | 3.613   | 0   | -130957.823 | -69262.946 | 90.975   | 314.318625  |         |
| 80BL- 4  | 80BL- 5'✓  | 132 58 17 | 359 15 7'✓  | 1.991'✓  | 1.991   | 0   | -0.026  | 0   | -130955.832 | -69262.972 | 94.562   | 188.272942  |         |
| 80BL- 5  | 80BL- 6'✓  | 179 6 59  | 358 22 6'✓  | 2.002'✓  | 2.001   | 0   | -0.057  | 0   | -130953.831 | -69263.029 | 94.479   | 189.052479  |         |
| 80BL- 6  | 80BL- 7'✓  | 178 52 51 | 357 14 57'✓ | 2.000'✓  | 1.998   | 0   | -0.096  | 0   | -130951.833 | -69263.125 | 94.326   | 188.463348  |         |
| 80BL- 7  | 80BL- 8'✓  | 178 49 26 | 356 4 23'✓  | 2.497'✓  | 2.491   | 0   | -0.171  | 0   | -130949.342 | -69263.296 | 94.059   | 234.300969  |         |
| 80BL- 8  | 80BL- 9'✓  | 178 50 18 | 354 54 41'✓ | 2.503'✓  | 2.493   | 0   | -0.222  | 0   | -130946.849 | -69263.518 | 93.666   | 233.509338  |         |
| 80BL- 9  | 80BL-10'✓  | 179 39 6  | 354 33 47'✓ | 2.501'✓  | 2.490   | 0   | -0.237  | 0   | -130944.359 | -69263.755 | 93.207   | 232.085430  |         |
| 80BL-10  | 80BL-11'✓  | 178 22 49 | 352 56 36'✓ | 2.499'✓  | 2.480   | 0   | -0.307  | 0   | -130941.879 | -69264.062 | 92.663   | 229.804240  |         |
| 80BL-11  | 80BL-12'✓  | 178 54 37 | 351 51 13'✓ | 2.498'✓  | 2.473   | 0   | -0.354  | 0   | -130939.406 | -69264.416 | 92.002   | 227.520946  |         |
| 80BL-12  | 80BL-13'✓  | 179 32 23 | 351 23 36'✓ | 2.499'✓  | 2.471   | 0   | -0.374  | 0   | -130936.935 | -69264.790 | 91.274   | 225.538054  |         |
| 80BL-13  | 80BL-31'✓  | 179 15 0  | 350 38 36'✓ | 0.850'✓  | 0.839   | 0   | -0.138  | 0   | -130936.096 | -69264.928 | 90.762   | 76.149318   |         |
| 80BL-31  | 80BL-32'✓  | 87 41 33  | 258 20 9'✓  | 48.604'✓ | -9.827  | 0   | -47.600 | 0   | -130945.923 | -69312.528 | 43.024   | -422.796848 |         |
| 80BL-32  | 80BL- 1'✓  | 78 9 8    | 156 29 17'✓ | 11.470'✓ | -10.518 | 0   | 4.576   | 0   | -130956.441 | -69307.952 | 0.000    | 0.000000    |         |
| TOTAL... | ソツカクスウ= 15 | 2340      | 0 0         | 129.255  | 0.000   | 0'✓ | 0.000   | 0'✓ |             |            | ハライメンセキ= | 1792.397580 |         |
|          |            |           |             |          |         |     |         |     |             |            | 1/2=     | 896.19      | +0.00   |
|          |            |           |             |          |         |     |         |     |             |            | メンセキ=    | 896.19'✓    |         |

\*\*\* ケツゴウ トラバース \*\*\*

チクメイ ... ミヤコタチク トチクカクセイリシキヨウ

| NO.     | NO.       | ANGLE   | * | AZIMUTH     | LENGTH   | DX      | *   | DY     | *   | X           | Y          | NO.     |
|---------|-----------|---------|---|-------------|----------|---------|-----|--------|-----|-------------|------------|---------|
|         | 80BL-13 ✓ |         |   |             |          |         |     |        |     | -130936.935 | -69264.790 | 80BL-13 |
| 80BL-13 | 80BL-31 ✓ |         |   | 350 38 36 ✓ | 0.850 ✓  | 0.839   | 0   | -0.138 | 0   | -130936.096 | -69264.928 | 80BL-31 |
| 80BL-31 | 80BL-14 ✓ | 180 0 0 |   | 350 38 36 ✓ | 1.647 ✓  | 1.625   | 0   | -0.268 | 0   | -130934.471 | -69265.196 | 80BL-14 |
|         | TOTAL..   | 180 0 0 |   |             | 2.497 ✓  | 2.464   | 0 ✓ | -0.406 | 0 ✓ |             |            |         |
|         | 80BL-25 ✓ |         |   |             |          |         |     |        |     | -130935.391 | -69317.110 | 80BL-25 |
| 80BL-25 | 80BL-32 ✓ |         |   | 156 29 17 ✓ | 11.486 ✓ | -10.532 | 0   | 4.582  | 0   | -130945.923 | -69312.528 | 80BL-32 |
| 80BL-32 | 80BL-1 ✓  | 180 0 0 |   | 156 29 17 ✓ | 11.470 ✓ | -10.518 | 0   | 4.576  | 0   | -130956.441 | -69307.952 | 80BL-1  |
|         | TOTAL..   | 180 0 0 |   |             | 22.956 ✓ | -21.050 | 0 ✓ | 9.158  | 0 ✓ |             |            |         |