

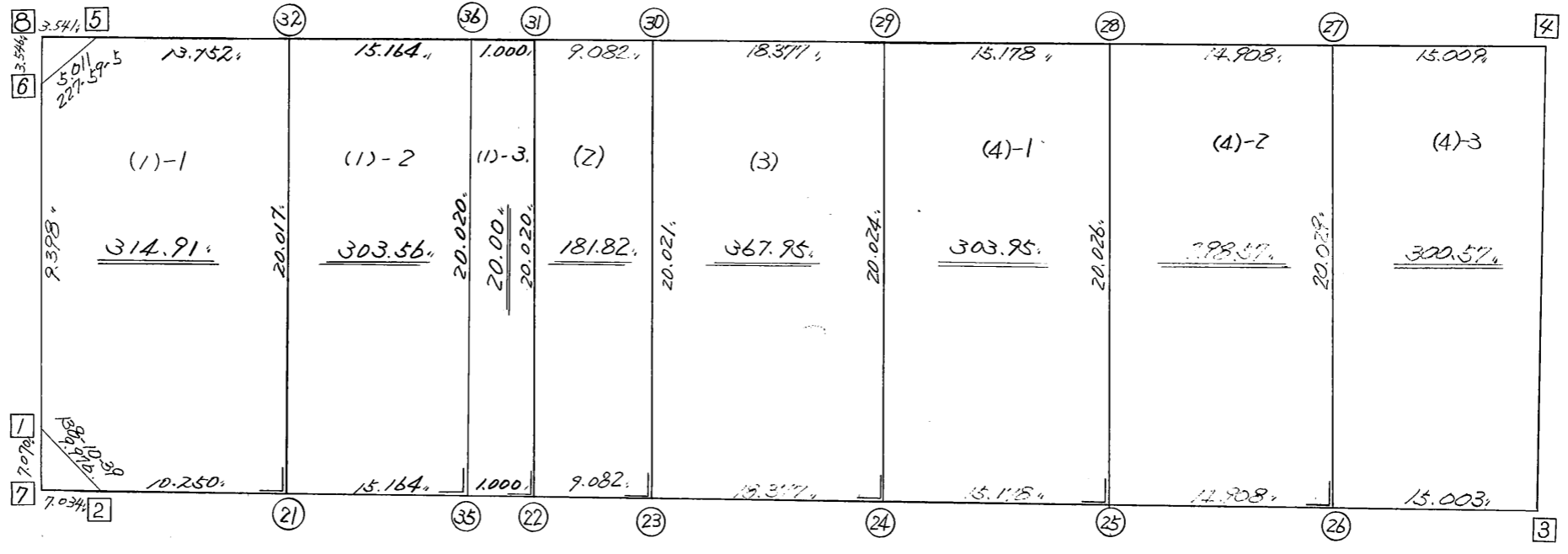
略 図

街区面積 = $\frac{2091.37}{m^2}$
 画地面積 = $\frac{2091.33}{m^2}$

$\frac{273-2-9}{102.470}$

$\frac{122-100}{9.393}$

$\frac{20.082}{3-3-43}$



$\frac{93.157}{93-3-42}$

街区点番号 1 ~ 8 筆界点番号 21 ~ 36 画地番号 (1) ~ (4)

*** メンセキ ケイサン (ハイオウキヨホウ) ***

チクメイ ... ミヤコタチク トチクカクセイリシキヨウ

セイリ NO... 76BL ✓

NO.	NO.	ANGLE	AZIMUTH	LENGTH	DX	*	DY	*	X	Y	DMD	2A	カーブメンセキ
76BL- 6	76BL- 1 ✓		183 1 9						-130983.674	-69201.931			
76BL- 1	76BL- 2 ✓	135 9 30	138 10 39 ✓	9.976 ✓	-7.434	0	6.652	0	-130991.108	-69195.279	6.157	-45.771138	
76BL- 2	76BL- 3 ✓	134 52 3	93 2 42 ✓	98.962 ✓	-5.257	0	98.822	0	-130996.365	-69096.457	111.631	-586.844167	
76BL- 3	76BL- 4 ✓	90 1 1	3 3 43 ✓	20.032 ✓	20.003	0	1.070	0	-130976.362	-69095.387	211.523	4231.094569	
76BL- 4	76BL- 5 ✓	89 58 26	273 2 9 ✓	102.470 ✓	5.427	0	-102.326	0	-130970.935	-69197.713	110.267	598.419009	
76BL- 5	76BL- 6 ✓	134 56 56	227 59 5 ✓	5.011 ✓	-3.354	0	-3.723	0	-130974.289	-69201.436	4.218	-14.147172	
76BL- 6	76BL- 1 ✓	135 2 4	183 1 9 ✓	9.398 ✓	-9.385	0	-0.495	0	-130983.674	-69201.931	0.000	0.000000	
TOTAL..	ソツカクスウ= 6	720 0 0		245.849	0.000	0 ✓	0.000	0 ✓			ハイメンセキ=	4182.751101	
											1/2=	2091.37	+0.00
											メンセキ=	2091.37 ✓	

*** メンセキ ケイザン (ハイオウキヨホウ) ***

チクメイ ... ミヤコタチク トチクカクセイリシキヨウ

セリ NO... 76BL(1)-1

NO.	NO.	ANGLE	AZIMUTH	LENGTH	DX	*	DY	*	X	Y	DMD	2A	カ-フメンセキ
76BL- 6	76BL- 1		183 1 9						-130983.674	-69201.931			
76BL- 1	76BL- 2	135 9 30	138 10 39	9.976	-7.434	0	6.652	0	-130991.108	-69195.279	6.157	-45.771138	
76BL- 2	76BL-21	134 52 3	93 2 42	10.250	-0.544	0	10.236	0	-130991.652	-69185.043	23.045	-12.536480	
76BL-21	76BL-32	90 0 0	3 2 42	20.017	19.989	0	1.063	0	-130971.663	-69183.980	34.344	686.502216	
76BL-32	76BL- 5	89 59 27	273 2 9	13.752	0.728	0	-13.733	0	-130970.935	-69197.713	21.674	15.778672	
76BL- 5	76BL- 6	134 56 56	227 59 5	5.011	-3.354	0	-3.723	0	-130974.289	-69201.436	4.218	-14.147172	
76BL- 6	76BL- 1	135 2 4	183 1 9	9.398	-9.385	0	-0.495	0	-130983.674	-69201.931	0.000	0.000000	
TOTAL..	ソツカク入= 6	720 0 0		68.404	0.000	0	0.000	0			ハイメンセキ=	629.826098	
											1/2=	314.91	+0.00
											メンセキ=	314.91	

セリ NO... 76BL(1)-2

76BL-32	76BL-21		183 2 42						-130991.652	-69185.043			
76BL-21	76BL-22	90 0 0	93 2 42	16.164	-0.859	0	16.141	-1	-130992.511	-69168.903	15.077	-12.951143	
76BL-22	76BL-31	90 0 0	3 2 42	20.020	19.992	0	1.063	1	-130972.519	-69167.839	32.281	645.361752	
76BL-31	76BL-32	89 59 27	273 2 9	16.164	0.856	0	-16.141	0	-130971.663	-69183.980	17.204	14.726624	
76BL-32	76BL-21	90 0 33	183 2 42	20.017	-19.989	0	-1.063	0	-130991.652	-69185.043	0.000	0.000000	
TOTAL..	ソツカク入= 4	360 0 0		72.365	0.000	0	0.000	0			ハイメンセキ=	647.137233	
											1/2=	323.56	+0.00
											メンセキ=	323.56	

*** ムンセキ ケイサン (ハ"イオウキヨホウ) ***

チクメイ ... ミヤコタ"チク トチクカクセイリシ"キ"ヨウ

セリ NO... 76BL(1)-2 ✓

NO.	NO.	ANGLE	AZIMUTH	LENGTH	DX	*	DY	*	X	Y	DMD	2A	カ-フ"ムンセキ
76BL-32	76BL-21 ✓		183 2 42						-130991.652	-69185.043			
76BL-21	76BL-35 ✓	90 0 0	93 2 42 ✓	15.164 ✓	-0.806	0	15.143	-1	-130992.458	-69169.901	14.079	-11.347674	
76BL-35	76BL-36 ✓	90 0 0	3 2 42 ✓	20.020 ✓	19.992	0	1.063	1	-130972.466	-69168.837	30.285	605.457720	
76BL-36	76BL-32 ✓	89 59 27	273 2 9 ✓	15.164 ✓	0.803	0	-15.143	0	-130971.663	-69183.980	16.206	13.013418	
76BL-32	76BL-21 ✓	90 0 33	183 2 42 ✓	20.017 ✓	-19.989	0	-1.063	0	-130991.652	-69185.043	0.000	0.000000	
TOTAL..	ソツカクスウ= 4	360 0 0		70.365	0.000	0 ✓	0.000	0 ✓			ハ"イムンセキ=	607.123464	
											1/2=	303.56	+0.00
											ムンセキ=	303.56 ✓	

セリ NO... 76BL(1)-3 ✓

76BL-36	76BL-35 ✓		183 2 42						-130992.458	-69169.901			
76BL-35	76BL-22 ✓	90 0 0	93 2 42 ✓	1.000 ✓	-0.053	0	0.999	-1	-130992.511	-69168.903	-0.066	0.003498	
76BL-22	76BL-31 ✓	90 0 0	3 2 42 ✓	20.020 ✓	19.992	0	1.063	1	-130972.519	-69167.839	1.996	39.904032	
76BL-31	76BL-36 ✓	89 59 27	273 2 9 ✓	1.000 ✓	0.053	0	-0.999	1	-130972.466	-69168.837	2.062	0.109286	
76BL-36	76BL-35 ✓	90 0 33	183 2 42 ✓	20.020 ✓	-19.992	0	-1.063	-1	-130992.458	-69169.901	0.000	0.000000	
TOTAL..	ソツカクスウ= 4	360 0 0		42.040	0.000	0 ✓	0.000	0 ✓			ハ"イムンセキ=	40.016816	
											1/2=	20.00	+0.00
											ムンセキ=	20.00 ✓	

*** メンセキ ケイサン (ハイオウキヨホウ) ***

チクメイ ... ミヤコタチク トチクカクセイリシキヨウ

セリ NO... 76BL(2)シ

NO.	INO.	ANGLE	AZIMUTH	LENGTH	DX	*	DY	*	X	Y	DMD	2A	カーブメンセキ
76BL-31	76BL-22 ✓		183 2 42						-130992.511	-69168.903			
76BL-22	76BL-23 ✓	90 0 0	93 2 42 ✓	9.082 ✓	-0.482	0	9.069	0	-130992.993	-69159.834	8.005	-3.858410	
76BL-23	76BL-30 ✓	90 0 0	3 2 42 ✓	20.021 ✓	19.993	0	1.064	0	-130973.000	-69158.770	18.138	362.633034	
76BL-30	76BL-31 ✓	89 59 27	273 2 9 ✓	9.082 ✓	0.481	0	-9.069	0	-130972.519	-69167.839	10.133	4.873973	
76BL-31	76BL-22 ✓	90 0 33	183 2 42 ✓	20.020 ✓	-19.992	0	-1.063	-1	-130992.511	-69168.903	0.000	0.000000	
TOTAL..	ソツカク入ウ= 4	360 0 0		58.205	0.000	0 ✓	0.001	-1 ✓			ハイメンセキ=	363.648597	
											1/2=	181.82	+0.00
											メンセキ=	181.82 ✓	

セリ NO... 76BL(3)シ

76BL-30	76BL-23 ✓		183 2 42						-130992.993	-69159.834			
76BL-23	76BL-24 ✓	90 0 0	93 2 42 ✓	18.377 ✓	-0.976	0	18.351	0	-130993.969	-69141.483	17.287	-16.872112	
76BL-24	76BL-29 ✓	90 0 0	3 2 42 ✓	20.024 ✓	19.996	0	1.064	0	-130973.973	-69140.419	36.702	733.893192	
76BL-29	76BL-30 ✓	89 59 27	273 2 9 ✓	18.377 ✓	0.973	0	-18.351	0	-130973.000	-69158.770	19.415	18.890795	
76BL-30	76BL-23 ✓	90 0 33	183 2 42 ✓	20.021 ✓	-19.993	0	-1.064	0	-130992.993	-69159.834	0.000	0.000000	
TOTAL..	ソツカク入ウ= 4	360 0 0		76.799	0.000	0 ✓	0.000	0 ✓			ハイメンセキ=	735.911875	
											1/2=	367.95	+0.00
											メンセキ=	367.95 ✓	

*** メンセキ ケイサン (ハイイウキヨホウ) ***

チクメイ ... ミヤコタチク トチクカクセイリシキヨウ

セリ NO... 76BL ⁽⁴⁾⁻¹ ~~(5)~~ ✓

NO.	NO.	ANGLE	AZIMUTH	LENGTH	DX	*	DY	*	X	Y	DMD	2A	カーブメンセキ
76BL-29	76BL-24		183 2 42						-130993.969	-69141.483			
76BL-24	76BL-25 ✓	90 0 0	93 2 42 ✓	15.178 ✓	-0.806	-1	15.157	0	-130994.776	-69126.326	14.093	-11.373051	
76BL-25	76BL-28 ✓	90 0 0	3 2 42 ✓	20.026 ✓	19.998	0	1.064	0	-130974.778	-69125.262	30.314	606.219372	
76BL-28	76BL-29 ✓	89 59 27	273 2 9 ✓	15.178 ✓	0.804	1	-15.157	0	-130973.973	-69140.419	16.221	13.057905	
76BL-29	76BL-24 ✓	90 0 33	183 2 42 ✓	20.024 ✓	-19.996	0	-1.064	0	-130993.969	-69141.483	0.000	0.000000	
TOTAL..	ソツカクスウ= 4	360 0 0		70.406	0.000	0 ✓	0.000	0 ✓			ハイイウキヨホウ=	607.904226	
											1/2=	303.95	+0.00
											メンセキ=	303.95 ✓	

セリ NO... 76BL ⁽⁴⁾⁻² ~~(6)~~ ✓

76BL-28	76BL-25 ✓		183 2 42						-130994.776	-69126.326			
76BL-25	76BL-26 ✓	90 0 0	93 2 42 ✓	14.908 ✓	-0.792	0	14.887	0	-130995.568	-69111.439	13.823	-10.947816	
76BL-26	76BL-27 ✓	90 0 0	3 2 42 ✓	20.029 ✓	20.001	0	1.064	0	-130975.567	-69110.375	29.774	595.509774	
76BL-27	76BL-28 ✓	89 59 27	273 2 9 ✓	14.908 ✓	0.790	-1	-14.887	0	-130974.778	-69125.262	15.951	12.585339	
76BL-28	76BL-25 ✓	90 0 33	183 2 42 ✓	20.026 ✓	-19.998	0	-1.064	0	-130994.776	-69126.326	0.000	0.000000	
TOTAL..	ソツカクスウ= 4	360 0 0		69.871	0.001	-1 ✓	0.000	0 ✓			ハイイウキヨホウ=	597.147297	
											1/2=	298.57	+0.00
											メンセキ=	298.57 ✓	

*** メンセキ ケイサン (ハイオウキヨホウ) ***

チクメイ ... ミヤコタチク トチクカクセイリシキヨウ

セリ NO... 76BL⁽⁴⁾⁻³~~(7)~~

NO.	NO.	ANGLE	AZIMUTH	LENGTH	DX	*	DY	*	X	Y	DMD	2A	カ-フメセキ
76BL-27	76BL-26 ✓		183 2 42						-130995.568	-69111.439			
76BL-26	76BL-3 ✓	90 0 0	93 2 42 ✓	15.003 ✓	-0.797	0	14.982	0	-130996.365	-69096.457	13.918	-11.092646	
76BL-3	76BL-4 ✓	90 1 1	3 3 43 ✓	20.032 ✓	20.003	0	1.070	0	-130976.362	-69095.387	29.970	599.489910	
76BL-4	76BL-27 ✓	89 58 26	273 2 9 ✓	15.009 ✓	0.795	0	-14.988	0	-130975.567	-69110.375	16.052	12.761340	
76BL-27	76BL-26 ✓	90 0 33	183 2 42 ✓	20.029 ✓	-20.001	0	-1.064	0	-130995.568	-69111.439	0.000	0.000000	
TOTAL..	ツツカクスク= 4	360 0 0		70.073	0.000	0 ✓	0.000	0 ✓			ハイメセキ=	601.158604	
											1/2=	300.57	+0.00
											メセキ=	300.57 ✓	

チクメイ ... ミヤコタチク トチクカクセイリシキヨウ

NO.	NO.	ANGLE	*	AZIMUTH	LENGTH	DX	*	DY	*	X	Y	NO.
	76BL- 2 ✓									-130991.108	-69195.279	76BL- 2
76BL- 2	76BL-21 ✓			93 2 42 ✓	10.250 ✓	-0.544	0	10.236	0	-130991.652	-69185.043	76BL-21
76BL-21	76BL-35 ✓	180	0 0	93 2 42 ✓	15.164 ✓	-0.806	0	15.143	-1	-130992.458	-69169.901	76BL-35
76BL-35	76BL-22 ✓	180	0 0	93 2 42 ✓	1.000 ✓	-0.053	0	0.999	-1	-130992.511	-69168.903	76BL-22
76BL-22	76BL-23 ✓	180	0 0	93 2 42 ✓	9.082 ✓	-0.482	0	9.069	0	-130992.993	-69159.834	76BL-23
76BL-23	76BL-24 ✓	180	0 0	93 2 42 ✓	18.377 ✓	-0.976	0	18.351	0	-130993.969	-69141.483	76BL-24
76BL-24	76BL-25 ✓	180	0 0	93 2 42 ✓	15.178 ✓	-0.806	-1	15.157	0	-130994.776	-69126.326	76BL-25
76BL-25	76BL-26 ✓	180	0 0	93 2 42 ✓	14.908 ✓	-0.792	0	14.887	0	-130995.568	-69111.439	76BL-26
76BL-26	76BL- 3 ✓	180	0 0	93 2 42 ✓	15.003 ✓	-0.797	0	14.982	0	-130996.365	-69096.457	76BL- 3
	TOTAL..	1260	0 0		98.962 ✓	-5.256	-1 ✓	98.824	-2 ✓			
	76BL- 4 ✓									-130976.362	-69095.387	76BL- 4
76BL- 4	76BL-27 ✓			273 2 9 ✓	15.009 ✓	0.795	0	-14.988	0	-130975.567	-69110.375	76BL-27
76BL-27	76BL-28 ✓	180	0 0	273 2 9 ✓	14.908 ✓	0.790	-1	-14.887	0	-130974.778	-69125.262	76BL-28
76BL-28	76BL-29 ✓	180	0 0	273 2 9 ✓	15.178 ✓	0.804	1	-15.157	0	-130973.973	-69140.419	76BL-29
76BL-29	76BL-30 ✓	180	0 0	273 2 9 ✓	18.377 ✓	0.973	0	-18.351	0	-130973.000	-69158.770	76BL-30
76BL-30	76BL-31 ✓	180	0 0	273 2 9 ✓	9.082 ✓	0.481	0	-9.069	0	-130972.519	-69167.839	76BL-31
76BL-31	76BL-36 ✓	180	0 0	273 2 9 ✓	1.000 ✓	0.053	0	-0.999	1	-130972.466	-69168.837	76BL-36
76BL-36	76BL-32 ✓	180	0 0	273 2 9 ✓	15.164 ✓	0.803	0	-15.143	0	-130971.663	-69183.980	76BL-32
76BL-32	76BL- 5 ✓	180	0 0	273 2 9 ✓	13.752 ✓	0.728	0	-13.733	0	-130970.935	-69197.713	76BL- 5
	TOTAL..	1260	0 0		102.470 ✓	5.427	0 ✓	-102.327	1 ✓			