

街廓原子一覽表用紙

( 63 " BL )

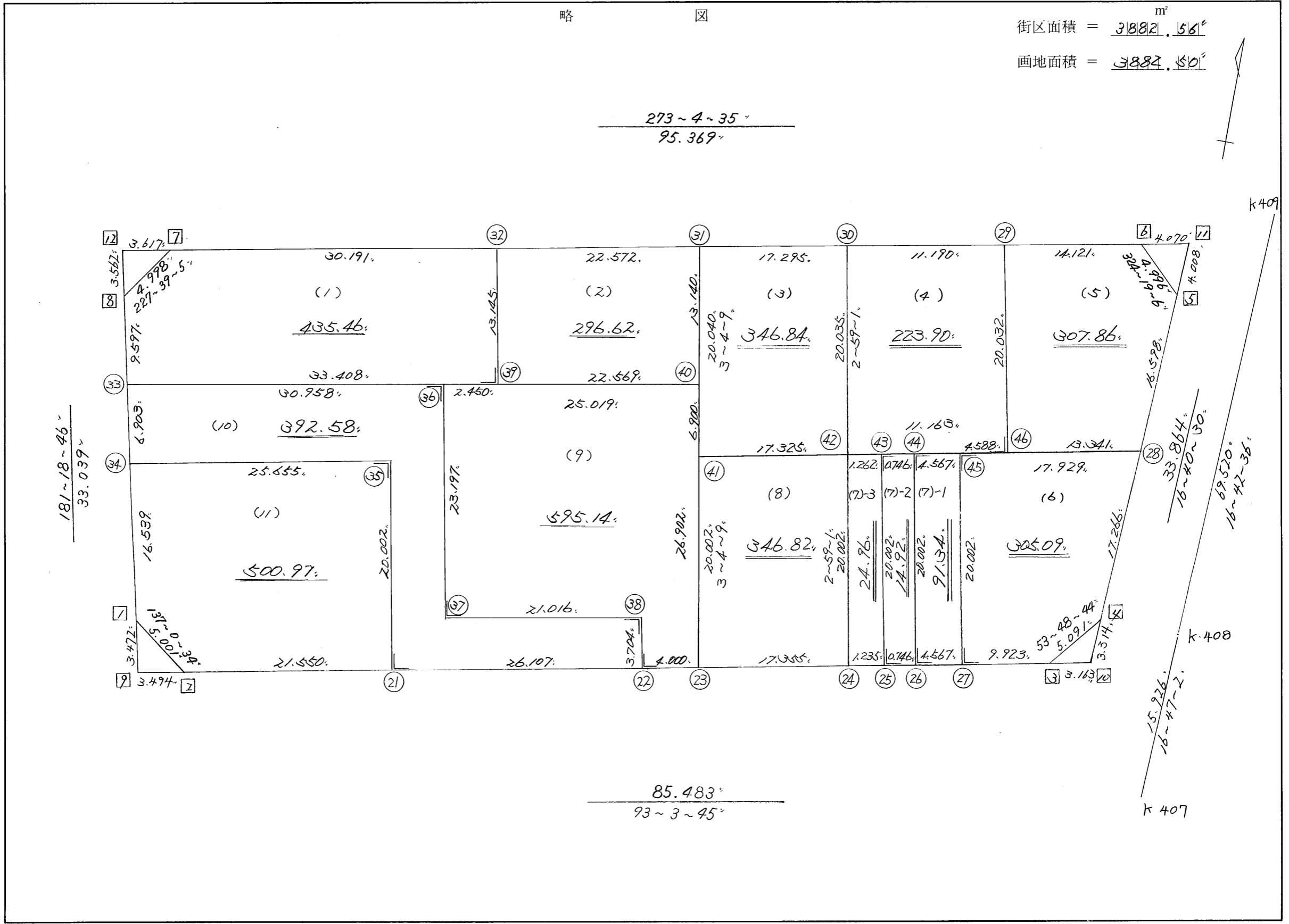
略 図

街区面積 = 3882.56<sup>m</sup>  
画地面積 = 3882.50<sup>m</sup>

273~4~35  
95.369

181~18~46  
33.039

85.483  
93~3~45



街区点番号 1 ~ 12<sup>号</sup> 筆界点番号 21 ~ 46<sup>号</sup> 画地番号 ( 1 ) ~ ( 11 )<sup>号</sup>

不二測量株式会社

\*\*\* メンセキ ケイサン (ハ"イオウキヨホウ) \*\*\*

チクメイ ... ミヤコタ"チク トチクカクセイリシ"キ"ヨウ

セイリ NO... 63BL✓

NO.	NO.	ANGLE	AZIMUTH	LENGTH	DX	*	DY	*	X	Y	DMD	ZA	カ-フ"メンセキ
63BL- 8	63BL- 1✓		181 18 46						-130941.726	-68968.398			
63BL- 1	63BL- 2✓	135 41 48	137 0 34	5.001	-3.658	0	3.410	0	-130945.384	-68964.988	2.653	-9.704674	
63BL- 2	63BL- 3✓	136 3 11	93 3 45	85.483	-4.567	0	85.361	0	-130949.951	-68879.627	91.424	-417.533408	
63BL- 3	63BL- 4✓	140 44 59	53 48 44	5.091	3.006	0	4.109	0	-130946.945	-68875.518	180.894	543.767364	
63BL- 4	63BL- 5✓	142 51 46	16 40 30	33.864	32.440	0	9.717	0	-130914.505	-68865.801	194.720	6316.716800	
63BL- 5	63BL- 6✓	127 38 36	324 19 6	4.996	4.058	0	-2.914	0	-130910.447	-68868.715	201.523	817.780334	
63BL- 6	63BL- 7✓	128 45 29	273 4 35	95.369	5.118	0	-95.232	0	-130905.329	-68963.947	103.377	529.083486	
63BL- 7	63BL- 8✓	134 34 30	227 39 5	4.998	-3.367	0	-3.694	0	-130908.696	-68967.641	4.451	-14.986517	
63BL- 8	63BL- 1✓	133 39 41	181 18 46	33.039	-33.030	0	-0.757	0	-130941.726	-68968.398	0.000	0.000000	
TOTAL..	ソツカク入ウ= 8	1080	0 0	267.841	0.000	0	0.000	0			ハ"イメンセキ=	7765.123385	
											1/2=	3882.56	+0.00
											メンセキ=	3882.56✓	

\*\*\* メンセキ ケイサン (ハイオウキヨホウ) \*\*\*

チクメイ ... ミヤコタチク トチクカクセイリシキヨウ

ペリ NO... 63BL(1) ✓

NO.	INO.	ANGLE	AZIMUTH	LENGTH	DX	*	DY	*	X	Y	DMD	2A	カーブメンセキ
63BL- 8	63BL-33 ✓		181 18 46						-130918.290	-68967.861			
63BL-33	63BL-39 ✓	91 44 59	93 3 45 ✓	33.408 ✓	-1.785	0	33.360	0	-130920.075	-68934.501	33.140	-59.154900	
63BL-39	63BL-32 ✓	90 0 0	3 3 45 ✓	13.145 ✓	13.126	0	0.702	0	-130906.949	-68933.799	67.202	882.093452	
63BL-32	63BL- 7 ✓	90 0 50	273 4 35 ✓	30.191 ✓	1.620	0	-30.147	-1	-130905.329	-68963.947	37.756	61.164720	
63BL- 7	63BL- 8 ✓	134 34 30	227 39 5 ✓	4.998 ✓	-3.367	0	-3.694	0	-130908.696	-68967.641	3.914	-13.178438	
63BL- 8	63BL-33 ✓	133 39 41	181 18 46 ✓	9.597 ✓	-9.594	0	-0.220	0	-130918.290	-68967.861	0.000	0.000000	
TOTAL..	ソツカクスウ= 5	540 0 0		91.339	0.000	0 ✓	0.001	-1 ✓			ハイメンセキ=	870.924834	
											1/2=	435.46	+0.00
											メンセキ=	435.46 ✓	

ペリ NO... 63BL(2) ✓

63BL-32	63BL-39 ✓		183 3 45						-130920.075	-68934.501			
63BL-39	63BL-40 ✓	90 0 0	93 3 45 ✓	22.569 ✓	-1.206	0	22.537	0	-130921.281	-68911.964	21.835	-26.333010	
63BL-40	63BL-31 ✓	90 0 24	3 4 9 ✓	13.140 ✓	13.121	0	0.704	0	-130908.160	-68911.260	45.076	591.442196	
63BL-31	63BL-32 ✓	90 0 26	273 4 35 ✓	22.572 ✓	1.211	0	-22.539	0	-130906.949	-68933.799	23.241	28.144851	
63BL-32	63BL-39 ✓	89 59 10	183 3 45 ✓	13.145 ✓	-13.126	0	-0.702	0	-130920.075	-68934.501	0.000	0.000000	
TOTAL..	ソツカクスウ= 4	360 0 0		71.426	0.000	0 ✓	0.000	0 ✓			ハイメンセキ=	593.254037	
											1/2=	296.62	+0.00
											メンセキ=	296.62 ✓	

\*\*\* メンセキ ケイサン (ハ"イオウキヨホウ) \*\*\*

チクメイ ... ミヤコタチク トチクカクセイリヨ"キ"ヨウ

セリ NO... 63BL(3)✓

NO.	INO.	ANGLE	AZIMUTH	LENGTH	DX	*	DY	*	X	Y	DMD	2A	カーブ"メンセキ
63BL-31	63BL-41✓		183 4 9						-130928.171	-68912.333			
63BL-41	63BL-42✓	89 59 36	93 3 45✓	17.325✓	-0.926	1	17.300	0	-130929.096	-68895.033	16.227	-15.009975	
63BL-42	63BL-30✓	89 55 16	2 59 1✓	20.035✓	20.008	0	1.043	0	-130909.088	-68893.990	34.570	691.676560	
63BL-30	63BL-31✓	90 5 34	273 4 35✓	17.295✓	0.928	0	-17.270	0	-130908.160	-68911.260	18.343	17.022304	
63BL-31	63BL-41✓	89 59 34	183 4 9✓	20.040✓	-20.011	0	-1.073	0	-130928.171	-68912.333	0.000	0.000000	
TOTAL..	ソツカク入ウ= 4	360 0 0		74.695	-0.001	1✓	0.000	0✓			ハ"イメ"セキ=	693.688889	
											1/2=	346.84	+0.00
											メ"セキ=	346.84 ✓	

セリ NO... 63BL(4)✓

63BL-30	63BL-42✓		182 59 1						-130929.096	-68895.033			
63BL-42	63BL-46✓	90 4 44	93 3 45✓	11.163✓	-0.596	0	11.147	0	-130929.692	-68883.886	10.104	-6.021984	
63BL-46	63BL-29✓	90 0 0	3 3 45✓	20.032✓	20.003	0	1.070	0	-130909.689	-68882.816	22.321	446.486963	
63BL-29	63BL-30✓	90 0 50	273 4 35✓	11.190✓	0.601	0	-11.174	0	-130909.088	-68893.990	12.217	7.342417	
63BL-30	63BL-42✓	89 54 26	182 59 1✓	20.035✓	-20.008	0	-1.043	0	-130929.096	-68895.033	0.000	0.000000	
TOTAL..	ソツカク入ウ= 4	360 0 0		62.420	0.000	0✓	0.000	0✓			ハ"イメ"セキ=	447.807396	
											1/2=	223.90	+0.00
											メ"セキ=	223.90 ✓	

\*\*\* メンセキ ケイサン (ハイオウキヨホウ) \*\*\*

チクメイ ... ミヤコタチク トチクカクセイリシキヨウ

レイリ NO... 63BL(5)✓

NO.	INO.	ANGLE	AZIMUTH	LENGTH	DX	*	DY	*	X	Y	DMD	2A	カーブメンセキ
63BL-29	63BL-46✓		183 3 45						-130929.692	-68883.886			
63BL-46	63BL-28✓	90 0 0	93 3 45✓	13.341✓	-0.713	0	13.322	0	-130930.405	-68870.564	12.252	-8.735676	
63BL-28	63BL-5✓	103 36 45	16 40 30✓	16.598✓	15.900	0	4.763	0	-130914.505	-68865.801	30.337	482.358300	
63BL-5	63BL-6✓	127 38 36	324 19 6✓	4.996✓	4.058	0	-2.914	0	-130910.447	-68868.715	32.186	130.610788	
63BL-6	63BL-29✓	128 45 29	273 4 35✓	14.121✓	0.758	0	-14.101	0	-130909.689	-68882.816	15.171	11.499618	
63BL-29	63BL-46✓	89 59 10	183 3 45✓	20.032✓	-20.003	0	-1.070	0	-130929.692	-68883.886	0.000	0.000000	
TOTAL..	ソツカクスウ= 5	540 0 0		69.088	0.000	0✓	0.000	0✓			ハイメンセキ=	615.733030	
											1/2=	307.86	+0.00
											メンセキ=	307.86✓	

レイリ NO... 63BL(6)✓

63BL-45	63BL-27✓		183 3 45						-130949.421	-68889.536			
63BL-27	63BL-3✓	90 0 0	93 3 45✓	9.923✓	-0.530	0	9.909	0	-130949.951	-68879.627	8.841	-4.685730	
63BL-3	63BL-4✓	140 44 59	53 48 44✓	5.091✓	3.006	0	4.109	0	-130946.945	-68875.518	22.859	68.714154	
63BL-4	63BL-28✓	142 51 46	16 40 30✓	17.266✓	16.540	0	4.954	0	-130930.405	-68870.564	31.922	527.989880	
63BL-28	63BL-45✓	76 23 15	273 3 45✓	17.929✓	0.958	0	-17.903	-1	-130929.447	-68888.468	18.972	18.175176	
63BL-45	63BL-27✓	90 0 0	183 3 45✓	20.002✓	-19.973	-1	-1.069	1	-130949.421	-68889.536	0.000	0.000000	
TOTAL..	ソツカクスウ= 5	540 0 0		70.211	0.001	-1✓	0.000	0✓			ハイメンセキ=	610.193480	
											1/2=	305.09	+0.00
											メンセキ=	305.09✓	

\*\*\* メンセキ ケイサン (ハイオウキヨホウ) \*\*\*

チクメイ ... ミヤコタチク トチクカクセイリシキヨウ

レイ NO... 63BL(7)-1 ✓

NO.	INO.	ANGLE	AZIMUTH	LENGTH	DX	*	DY	*	X	Y	DMD	2A	カ-フメンセキ
63BL-44	63BL-26 ✓		183 3 45						-130949.177	-68894.096			
63BL-26	63BL-27 ✓	90 0 0	93 3 45 ✓	4.567 ✓	-0.244	0	4.560	0	-130949.421	-68889.536	3.492	-0.852048	
63BL-27	63BL-45 ✓	90 0 0	3 3 45 ✓	20.002 ✓	19.973	1	1.069	-1	-130929.447	-68888.468	9.120	182.162880	
63BL-45	63BL-44 ✓	90 0 0	273 3 45 ✓	4.567 ✓	0.244	0	-4.560	0	-130929.203	-68893.028	5.628	1.373232	
63BL-44	63BL-26 ✓	90 0 0	183 3 45 ✓	20.002 ✓	-19.973	-1	-1.069	1	-130949.177	-68894.096	0.000	0.000000	
TOTAL...	ソツカクスウ= 4	360 0 0		49.138	0.000	0 ✓	0.000	0 ✓			ハイメンセキ=	182.684064	
											1/2=	91.34	+0.00
											メンセキ=	91.34 ✓	

レイ NO... 63BL(7)-2 ✓

63BL-43	63BL-25 ✓		183 3 45						-130949.137	-68894.841			
63BL-25	63BL-26 ✓	90 0 0	93 3 45 ✓	0.746 ✓	-0.040	0	0.745	0	-130949.177	-68894.096	-0.323	0.012920	
63BL-26	63BL-44 ✓	90 0 0	3 3 45 ✓	20.002 ✓	19.973	1	1.069	-1	-130929.203	-68893.028	1.490	29.761260	
63BL-44	63BL-43 ✓	90 0 0	273 3 45 ✓	0.746 ✓	0.040	0	-0.745	0	-130929.163	-68893.773	1.813	0.072520	
63BL-43	63BL-25 ✓	90 0 0	183 3 45 ✓	20.002 ✓	-19.973	-1	-1.069	1	-130949.137	-68894.841	0.000	0.000000	
TOTAL...	ソツカクスウ= 4	360 0 0		41.496	0.000	0 ✓	0.000	0 ✓			ハイメンセキ=	29.846700	
											1/2=	14.92	+0.00
											メンセキ=	14.92 ✓	

\*\*\* メンセキ ケイザン (ハイオウキヨホウ) \*\*\*

チクメイ ... ミヤコタチク トチクカクセイリシキヨウ

レイリ NO... 63BL(7)-3 ✓

NO.	INO.	ANGLE	AZIMUTH	LENGTH	DX	*	DY	*	X	Y	DMD	2A	カーブメンセキ
63BL-42	63BL-24 ✓		182 59 1						-130949.071	-68896.074			
63BL-24	63BL-25 ✓	90 4 44	93 3 45 ✓	1.235 ✓	-0.066	0	1.233	0	-130949.137	-68894.841	0.192	-0.012672	
63BL-25	63BL-43 ✓	90 0 0	3 3 45 ✓	20.002 ✓	19.973	1	1.069	-1	-130929.163	-68893.773	2.493	49.795182	
63BL-43	63BL-42 ✓	90 0 0	273 3 45 ✓	1.262 ✓	0.067	0	-1.260	0	-130929.096	-68895.033	2.301	0.154167	
63BL-42	63BL-24 ✓	89 55 16	182 59 1 ✓	20.002 ✓	-19.975	0	-1.041	0	-130949.071	-68896.074	0.000	0.000000	
TOTAL..	ソツカクスウ= 4	360 0 0		42.501	-0.001	1 ✓	0.001	-1 ✓			ハイメニセキ=	49.936677	
											1/2=	24.96	+0.00
											メニセキ=	24.96 ✓	

レイリ NO... 63BL(8) ✓

63BL-41	63BL-23 ✓		183 4 9						-130948.144	-68913.404			
63BL-23	63BL-24 ✓	89 59 36	93 3 45 ✓	17.355 ✓	-0.927	0	17.330	0	-130949.071	-68896.074	16.259	-15.072093	
63BL-24	63BL-42 ✓	89 55 16	2 59 1 ✓	20.002 ✓	19.975	0	1.041	0	-130929.096	-68895.033	34.630	691.734250	
63BL-42	63BL-41 ✓	90 4 44	273 3 45 ✓	17.325 ✓	0.926	-1	-17.300	0	-130928.171	-68912.333	18.371	16.993175	
63BL-41	63BL-23 ✓	90 0 24	183 4 9 ✓	20.002 ✓	-19.973	0	-1.071	0	-130948.144	-68913.404	0.000	0.000000	
TOTAL..	ソツカクスウ= 4	360 0 0		74.684	0.001	-1 ✓	0.000	0 ✓			ハイメニセキ=	693.655332	
											1/2=	346.82	+0.00
											メニセキ=	346.82 ✓	

\*\*\* メンセキ ケイザン (ハ"イオウキヨホウ) \*\*\*

チクメイ ... ミヤコタチク トチクカクセイリシキヨウ

セリ NO... 63BL(9)✓

NO.	INO.	ANGLE	AZIMUTH			LENGTH	DX	*	DY	*	X	Y	DMD	2A	カ-フ"メンセキ
63BL-38	63BL-22✓		183	3	45						-130947.930	-68917.398			
63BL-22	63BL-23✓	90 0 0	93	3	45✓	4.000✓	-0.214	0	3.994	0	-130948.144	-68913.404	3.796	-0.812344	
63BL-23	63BL-40✓	90 0 24	3	4	9✓	26.902✓	26.863	0	1.440	0	-130921.281	-68911.964	9.230	247.945490	
63BL-40	63BL-36✓	89 59 36	273	3	45✓	25.019✓	1.337	0	-24.983	0	-130919.944	-68936.947	-14.313	-19.136481	
63BL-36	63BL-37✓	90 0 0	183	3	45✓	23.197✓	-23.164	0	-1.239	0	-130943.108	-68938.186	-40.535	938.952740	
63BL-37	63BL-38✓	90 0 0	93	3	45✓	21.016✓	-1.123	0	20.986	0	-130944.231	-68917.200	-20.788	23.344924	
63BL-38	63BL-22✓	270 0 0	183	3	45✓	3.704✓	-3.699	0	-0.198	0	-130947.930	-68917.398	0.000	0.000000	
TOTAL..	ソツカクスウ= 6	720 0 0				103.838	0.000	0✓	0.000	0✓			ハ"イメンセキ=	1190.294329	
													1/2=	595.14 +0.00	
													メンセキ=	595.14✓	

セリ NO... 63BL(10)✓

63BL-35	63BL-21✓		183	3	45						-130946.535	-68943.469		
63BL-21	63BL-22✓	90 0 0	93	3	45✓	26.107✓	-1.395	0	26.070	1	-130947.930	-68917.398	25.003	-34.879185
63BL-22	63BL-38✓	90 0 0	3	3	45✓	3.704✓	3.699	0	0.198	0	-130944.231	-68917.200	51.272	189.655128
63BL-38	63BL-37✓	90 0 0	273	3	45✓	21.016✓	1.123	0	-20.986	0	-130943.108	-68938.186	30.484	34.233532
63BL-37	63BL-36✓	270 0 0	3	3	45✓	23.197✓	23.164	0	1.239	0	-130919.944	-68936.947	10.737	248.711868
63BL-36	63BL-33✓	90 0 0	273	3	45✓	30.958✓	1.654	0	-30.914	0	-130918.290	-68967.861	-18.938	-31.323452
63BL-33	63BL-34✓	88 15 1	181	18	46✓	6.903✓	-6.901	0	-0.158	0	-130925.191	-68968.019	-50.010	345.119010
63BL-34	63BL-35✓	91 44 59	93	3	45✓	25.655✓	-1.371	0	25.618	0	-130926.562	-68942.401	-24.550	33.658050
63BL-35	63BL-21✓	270 0 0	183	3	45✓	20.002✓	-19.973	0	-1.069	1	-130946.535	-68943.469	0.000	0.000000
TOTAL..	ソツカクスウ= 8	1080 0 0				157.542	0.000	0✓	-0.002	2✓			ハ"イメンセキ=	785.174951
													1/2=	392.58 +0.00
													メンセキ=	392.58✓



\*\*\* メンセキ ケイザン (ハ"イオウキヨホウ) \*\*\*

チクメイ ... ミヤコタ"チク トチクカクセイリシ"キ"ヨウ

レイリ NO... 63BL(11)✓

NO.	INO.	ANGLE	AZIMUTH	LENGTH	DX	*	DY	*	X	Y	DMD	2A	カ-フ"メンセキ
63BL-34	63BL- 1 ✓		181 18 46						-130941.726	-68968.398			
63BL- 1	63BL- 2 ✓	135 .41 48	137 0 34 ✓	5.001 ✓	-3.658	0	3.410	0	-130945.384	-68964.988	3.031	-11.087398	
63BL- 2	63BL-21 ✓	136 3 11	93 3 45 ✓	21.550 ✓	-1.151	0	21.519	0	-130946.535	-68943.469	27.960	-32.181960	
63BL-21	63BL-35 ✓	90 0 0	3 3 45 ✓	20.002 ✓	19.973	0	1.069	-1	-130926.562	-68942.401	50.547	1009.575231	
63BL-35	63BL-34 ✓	90 0 0	273 3 45 ✓	25.655 ✓	1.371	0	-25.618	0	-130925.191	-68968.019	25.997	35.641887	
63BL-34	63BL- 1 ✓	88 15 1	181 18 46 ✓	16.539 ✓	-1.6.535	0	-0.379	0	-130941.726	-68968.398	0.000	0.000000	
TOTAL..	ソツカクスウ= 5	540 0 0		88.747	0.000	0 ✓	0.001	-1 ✓					
											ハ"イメンセキ=	1001.947760	
											1/2=	500.97	+0.00
											メンセキ=	500.97 ✓	

チクメイ ... ミヤコタチク トチクカクセイリシキヨウ

NO.	NO.	ANGLE *	AZIMUTH	LENGTH	DX	DY	X	Y	NO.
	63BL- 2 ✓						-130945.384	-68964.988	63BL- 2
63BL- 2	63BL-21 ✓		93 3 45 ✓	21.550 ✓	-1.151	21.519	-130946.535	-68943.469	63BL-21
63BL-21	63BL-22 ✓	180 0 0	93 3 45 ✓	26.107 ✓	-1.395	26.070	-130947.930	-68917.398	63BL-22
63BL-22	63BL-23 ✓	180 0 0	93 3 45 ✓	4.000 ✓	-0.214	3.994	-130948.144	-68913.404	63BL-23
63BL-23	63BL-24 ✓	180 0 0	93 3 45 ✓	17.355 ✓	-0.927	17.330	-130949.071	-68896.074	63BL-24
63BL-24	63BL-25 ✓	180 0 0	93 3 45 ✓	1.235 ✓	-0.066	1.233	-130949.137	-68894.841	63BL-25
63BL-25	63BL-26 ✓	180 0 0	93 3 45 ✓	0.746 ✓	-0.040	0.745	-130949.177	-68894.096	63BL-26
63BL-26	63BL-27 ✓	180 0 0	93 3 45 ✓	4.567 ✓	-0.244	4.560	-130949.421	-68889.536	63BL-27
63BL-27	63BL- 3 ✓	180 0 0	93 3 45 ✓	9.923 ✓	-0.530	9.909	-130949.951	-68879.627	63BL- 3
	TOTAL..	1260 0 0		85.483 ✓	-4.567	85.360			
	63BL- 4 ✓						-130946.945	-68875.518	63BL- 4
63BL- 4	63BL-28 ✓		16 40 30 ✓	17.266 ✓	16.540	4.954	-130930.405	-68870.564	63BL-28
63BL-28	63BL- 5 ✓	180 0 0	16 40 30 ✓	16.598 ✓	15.900	4.763	-130914.505	-68865.801	63BL- 5
	TOTAL..	180 0 0		33.864 ✓	32.440	9.717			
	63BL- 6 ✓						-130910.447	-68868.715	63BL- 6
63BL- 6	63BL-29 ✓		273 4 35 ✓	14.121 ✓	0.758	-14.101	-130909.689	-68882.816	63BL-29
63BL-29	63BL-30 ✓	180 0 0	273 4 35 ✓	11.190 ✓	0.601	-11.174	-130909.088	-68893.990	63BL-30
63BL-30	63BL-31 ✓	180 0 0	273 4 35 ✓	17.295 ✓	0.928	-17.270	-130908.160	-68911.260	63BL-31
63BL-31	63BL-32 ✓	180 0 0	273 4 35 ✓	22.572 ✓	1.211	-22.539	-130906.949	-68933.799	63BL-32
63BL-32	63BL- 7 ✓	180 0 0	273 4 35 ✓	30.191 ✓	1.620	-30.147	-130905.329	-68963.947	63BL- 7
	TOTAL..	720 0 0		95.369 ✓	5.118	-95.231			

チクメイ . . . ミヤコタ"チク トチクカクセイリシ"キ"ヨウ

NO.	NO.	ANGLE *	AZIMUTH	LENGTH	DX	* DY	X	Y	NO.
	63BL- 8 ✓						-130908.696	-68967.641	63BL- 8
63BL- 8	63BL-33 ✓		181 18 46 ✓	9.597 ✓	-9.594	0	-130918.290	-68967.861	63BL-33
63BL-33	63BL-34 ✓	180 0 0	181 18 46 ✓	6.903 ✓	-6.901	0	-130925.191	-68968.019	63BL-34
63BL-34	63BL- 1 ✓	180 0 0	181 18 46 ✓	16.539 ✓	-16.535	0	-130941.726	-68968.398	63BL- 1
	TOTAL..	360 0 0		33.039 ✓	-33.030	0 ✓	-0.757	0 ✓	
	63BL-33 ✓						-130918.290	-68967.861	63BL-33
63BL-33	63BL-39 ✓		93 3 45 ✓	33.408 ✓	-1.785	0	-130920.075	-68934.501	63BL-39
63BL-39	63BL-40 ✓	180 0 0	93 3 45 ✓	22.569 ✓	-1.206	0	-130921.281	-68911.964	63BL-40
	TOTAL..	180 0 0		55.977 ✓	-2.991	0 ✓	55.897	0 ✓	
	63BL-33 ✓						-130918.290	-68967.861	63BL-33
63BL-33	63BL-36 ✓		93 3 45 ✓	30.958 ✓	-1.654	0	-130919.944	-68936.947	63BL-36
63BL-36	63BL-40 ✓	180 0 0	93 3 45 ✓	25.019 ✓	-1.337	0	-130921.281	-68911.964	63BL-40
	TOTAL..	180 0 0		55.977 ✓	-2.991	0 ✓	55.897	0 ✓	
	63BL-33 ✓						-130918.290	-68967.861	63BL-33
63BL-33	63BL-36 ✓		93 3 45 ✓	30.958 ✓	-1.654	0	-130919.944	-68936.947	63BL-36
63BL-36	63BL-39 ✓	180 0 0	93 3 45 ✓	2.450 ✓	-0.131	0	-130920.075	-68934.501	63BL-39
63BL-39	63BL-40 ✓	180 0 0	93 3 45 ✓	22.569 ✓	-1.206	0	-130921.281	-68911.964	63BL-40
	TOTAL..	360 0 0		55.977 ✓	-2.991	0 ✓	55.898	-1 ✓	
	63BL-41 ✓						-130928.171	-68912.333	63BL-41
63BL-41	63BL-42 ✓		93 3 45 ✓	17.325 ✓	-0.926	1	-130929.096	-68895.033	63BL-42

チクメイ ... ミヤコタチク トチクカクセイリシキヨウ

NO.	NO.	ANGLE *	AZIMUTH	LENGTH	DX *	DY *	X	Y	NO.
63BL-42	63BL-46 ✓	180 0 0	93 3 45 ✓	11.163 ✓	-0.596	11.147	-130929.692	-68883.886	63BL-46
63BL-46	63BL-28 ✓	180 0 0	93 3 45 ✓	13.341 ✓	-0.713	13.322	-130930.405	-68870.564	63BL-28
	TOTAL..	360 0 0		41.829 ✓	-2.235	41.769			
	63BL-41 ✓						-130928.171	-68912.333	63BL-41
63BL-41	63BL-42 ✓		93 3 45 ✓	17.325 ✓	-0.926	17.300	-130929.096	-68895.033	63BL-42
63BL-42	63BL-43 ✓	180 0 0	93 3 45 ✓	1.262 ✓	-0.067	1.260	-130929.163	-68893.773	63BL-43
63BL-43	63BL-44 ✓	180 0 0	93 3 45 ✓	0.746 ✓	-0.040	0.745	-130929.203	-68893.028	63BL-44
63BL-44	63BL-45 ✓	180 0 0	93 3 45 ✓	4.567 ✓	-0.244	4.560	-130929.447	-68888.468	63BL-45
63BL-45	63BL-28 ✓	180 0 0	93 3 45 ✓	17.929 ✓	-0.958	17.903	-130930.405	-68870.564	63BL-28
	TOTAL..	720 0 0		41.829 ✓	-2.235	41.768			
	63BL-41 ✓						-130928.171	-68912.333	63BL-41
63BL-41	63BL-42 ✓		93 3 45 ✓	17.325 ✓	-0.926	17.300	-130929.096	-68895.033	63BL-42
63BL-42	63BL-43 ✓	180 0 0	93 3 45 ✓	1.262 ✓	-0.067	1.260	-130929.163	-68893.773	63BL-43
63BL-43	63BL-44 ✓	180 0 0	93 3 45 ✓	0.746 ✓	-0.040	0.745	-130929.203	-68893.028	63BL-44
63BL-44	63BL-45 ✓	180 0 0	93 3 45 ✓	4.567 ✓	-0.244	4.560	-130929.447	-68888.468	63BL-45
63BL-45	63BL-46 ✓	180 0 0	93 3 45 ✓	4.588 ✓	-0.245	4.581	-130929.692	-68883.886	63BL-46
63BL-46	63BL-28 ✓	180 0 0	93 3 45 ✓	13.341 ✓	-0.713	13.322	-130930.405	-68870.564	63BL-28
	TOTAL..	900 0 0		41.829 ✓	-2.235	41.768			
	63BL-23 ✓						-130948.144	-68913.404	63BL-23
63BL-23	63BL-40 ✓		3 4 9 ✓	26.902 ✓	26.863	1.440	-130921.281	-68911.964	63BL-40
63BL-40	63BL-31 ✓	180 0 0	3 4 9 ✓	13.140 ✓	13.121	0.704	-130908.160	-68911.260	63BL-31

チクメイ ... ミヤコタチク トチクカクセイリシキヨウ

NO.	NO.	ANGLE *	IAZIMUTH	LENGTH	DX	*	DY	*	X	Y	NO.
	TOTAL..	180 0 0		40.042 ✓	39.984	0 ✓	2.144	0 ✓			
	63BL-23 ✓								-130948.144	-68913.404	63BL-23
63BL-23	63BL-41 ✓		3 4 9 ✓	20.002 ✓	19.973	0	1.071	0	-130928.171	-68912.333	63BL-41
63BL-41	63BL-31 ✓	180 0 0	3 4 9 ✓	20.040 ✓	20.011	0	1.073	0	-130908.160	-68911.260	63BL-31
	TOTAL..	180 0 0		40.042 ✓	39.984	0 ✓	2.144	0 ✓			
	63BL-23 ✓								-130948.144	-68913.404	63BL-23
63BL-23	63BL-41 ✓		3 4 9 ✓	20.002 ✓	19.973	0	1.071	0	-130928.171	-68912.333	63BL-41
63BL-41	63BL-40 ✓	180 0 0	3 4 9 ✓	6.900 ✓	6.890	0	0.369	0	-130921.281	-68911.964	63BL-40
63BL-40	63BL-31 ✓	180 0 0	3 4 9 ✓	13.140 ✓	13.121	0	0.704	0	-130908.160	-68911.260	63BL-31
	TOTAL...	360 0 0		40.042 ✓	39.984	0 ✓	2.144	0 ✓			
	63BL-24 ✓								-130949.071	-68896.074	63BL-24
63BL-24	63BL-42 ✓		2 59 1 ✓	20.002 ✓	19.975	0	1.041	0	-130929.096	-68895.033	63BL-42
63BL-42	63BL-30 ✓	180 0 0	2 59 1 ✓	20.035 ✓	20.008	0	1.043	0	-130909.088	-68893.990	63BL-30
	TOTAL..	180 0 0		40.037 ✓	39.983	0 ✓	2.084	0 ✓			