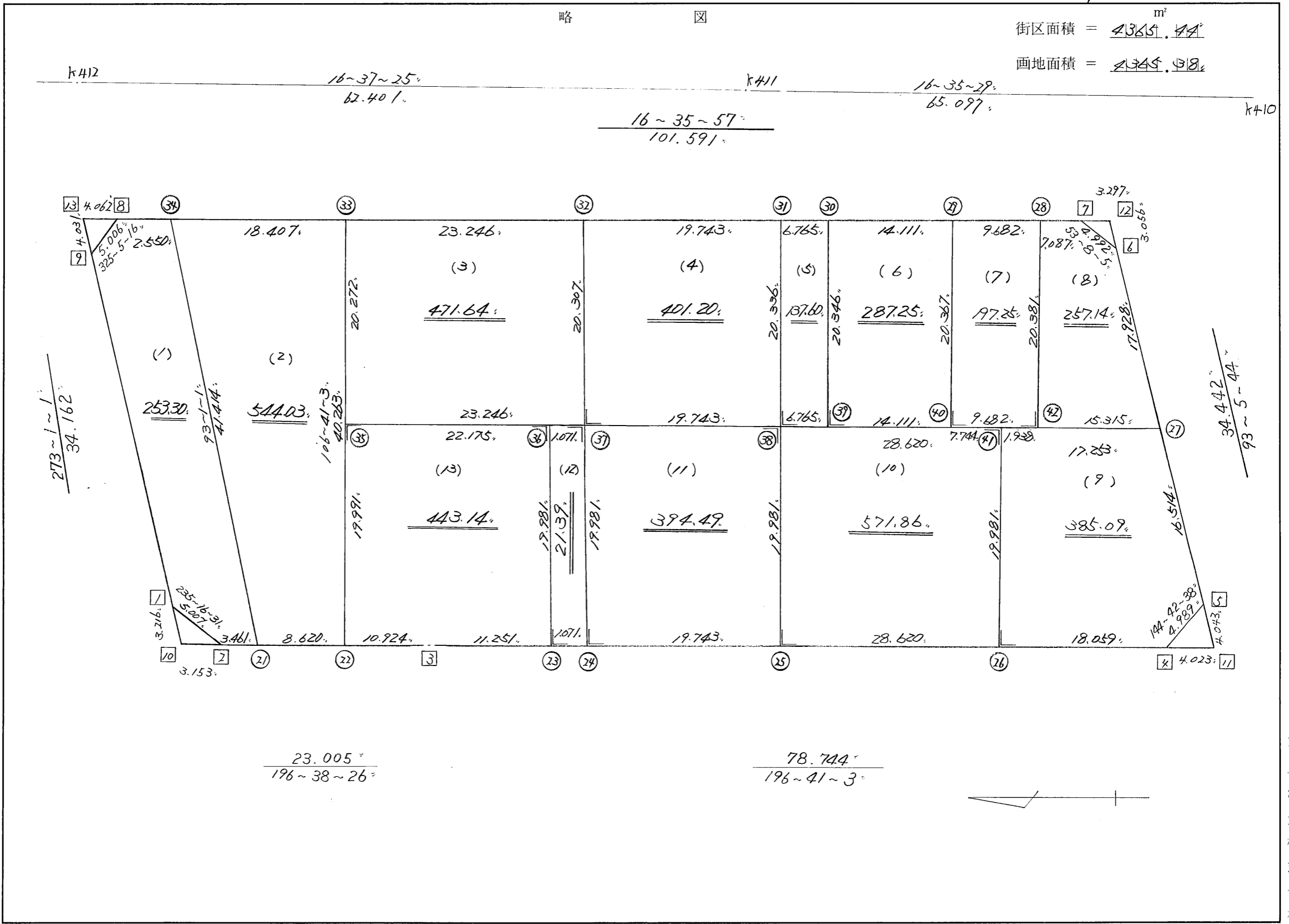


略 図

街区面積 = 4365.74 m²

画地面積 = 2345.98



街区点番号 1 ~ 13 筆界点番号 21 ~ 42 画地番号 (1) ~ (13)

不二測量株式会社

*** メンセキ さいさん (ハ"イオウキヨホウ) ***

チクメイ ... ミヤコタ"チク トチクカクセイリシ"キ"ヨウ

セイリ NO... 57BL

| NO. | NO. | ANGLE | AZIMUTH | LENGTH | DX | * | DY | * | X | Y | DMD | 2A | カ-フ"メンセキ |
|---------|-----------|-----------|-----------|---------|---------|---|---------|---|-------------|------------|---------|-------------|---------------|
| 57BL- 9 | 57BL- 1 | | 273 1 1 | | | | | | -130753.105 | -68856.325 | | | |
| 57BL- 1 | 57BL- 2 | 142 15 30 | 235 16 31 | 5.007 | -2.852 | 0 | -4.115 | 0 | -130755.957 | -68860.440 | -38.230 | 109.031960 | |
| 57BL- 2 | 57BL- 3 | 141 21 55 | 196 38 26 | 23.005 | -22.042 | 0 | -6.588 | 0 | -130777.999 | -68867.028 | -48.933 | 1078.581186 | |
| 57BL- 3 | 57BL- 4 | 180 2 37 | 196 41 3 | 78.744 | -75.429 | 0 | -22.607 | 0 | -130853.428 | -68889.635 | -78.128 | 5893.116912 | |
| 57BL- 4 | 57BL- 5 | 128 1 35 | 144 42 38 | 4.989 | -4.072 | 0 | 2.882 | 0 | -130857.500 | -68886.753 | -97.853 | 398.457416 | |
| 57BL- 5 | 57BL- 6 | 128 23 6 | 93 5 44 | 34.442 | -1.860 | 0 | 34.392 | 0 | -130859.360 | -68852.361 | -60.579 | 112.676940 | |
| 57BL- 6 | 57BL- 7 | 140 2 21 | 53 8 5 | 4.992 | 2.995 | 0 | 3.994 | 0 | -130856.365 | -68848.367 | -22.193 | -66.468035 | |
| 57BL- 7 | 57BL- 8 | 143 27 52 | 16 35 57 | 101.591 | 97.357 | 0 | 29.022 | 0 | -130759.008 | -68819.345 | 10.823 | 1053.694811 | |
| 57BL- 8 | 57BL- 9 | 128 29 19 | 325 5 16 | 5.006 | 4.105 | 0 | -2.865 | 0 | -130754.903 | -68822.210 | 36.980 | 151.802900 | |
| 57BL- 9 | 57BL- 1 | 127 55 45 | 273 1 1 | 34.162 | 1.798 | 0 | -34.115 | 0 | -130753.105 | -68856.325 | 0.000 | 0.000000 | |
| TOTAL.. | ソツカクスク= 9 | 1260 0 0 | | 291.938 | 0.000 | 0 | 0.000 | 0 | | | | 8730.894090 | |
| | | | | | | | | | | | | 1/2= | 4365.44 +0.00 |
| | | | | | | | | | | | | メンセキ= | 4365.44 // |

*** メンセキ ケイサン (ハイオウキヨボウ) ***

チクメイ ... ミヤコタチク トチクカクセイリシキヨウ

セリ NO... 57BL(1)✓

| NO. | NO. | ANGLE | AZIMUTH | LENGTH | DX | * | DY | * | X | Y | DMD | 2A | カ-クメンセキ |
|---------|-----------|-----------|------------|---------|--------|----|---------|----|-------------|------------|---------|------------|---------|
| 57BL- 9 | 57BL- 1✓ | | 273 1 1 | | | | | | -130753.105 | -68856.325 | | | |
| 57BL- 1 | 57BL- 2✓ | 142 15 30 | 235 16 31✓ | 5.007✓ | -2.852 | 0 | -4.115 | 0 | -130755.957 | -68860.440 | -38.230 | 109.031960 | |
| 57BL- 2 | 57BL-21✓ | 141 21 55 | 196 38 26✓ | 3.461✓ | -3.316 | 0 | -0.991 | 0 | -130759.273 | -68861.431 | -43.336 | 143.702176 | |
| 57BL-21 | 57BL-34✓ | 76 22 35 | 93 1 1✓ | 41.414✓ | -2.180 | 1 | 41.357 | 0 | -130761.452 | -68820.074 | -2.970 | 6.471630 | |
| 57BL-34 | 57BL- 8✓ | 103 34 56 | 16 35 57✓ | 2.550✓ | 2.444 | 0 | 0.728 | 1 | -130759.008 | -68819.345 | 39.116 | 95.599504 | |
| 57BL- 8 | 57BL- 9✓ | 128 29 19 | 325 5 16✓ | 5.006✓ | 4.105 | 0 | -2.865 | 0 | -130754.903 | -68822.210 | 36.980 | 151.802900 | |
| 57BL- 9 | 57BL- 1✓ | 127 55 45 | 273 1 1✓ | 34.162✓ | 1.798 | 0 | -34.115 | 0 | -130753.105 | -68856.325 | 0.000 | 0.000000 | |
| TOTAL.. | ソツカクスク= 6 | 720 0 0 | | 91.600 | -0.001 | 1✓ | -0.001 | 1✓ | | | ハイメンセキ= | 506.608170 | |
| | | | | | | | | | | | 1/2= | 253.30 | +0.00 |
| | | | | | | | | | | | メンセキ= | 253.30✓ | |

セリ NO... 57BL(2)✓

| | | | | | | | | | | | | | |
|---------|-----------|-----------|------------|----------|---------|-----|---------|-----|-------------|------------|---------|-------------|-------|
| 57BL-34 | 57BL-21✓ | | 273 1 1 | | | | | | -130759.273 | -68861.431 | | | |
| 57BL-21 | 57BL-22✓ | 103 37 25 | 196 38 26✓ | 8.620✓ | -8.259 | 0 | -2.468 | -1 | -130767.532 | -68863.900 | -43.826 | 361.958934 | |
| 57BL-22 | 57BL-33✓ | 90 2 37 | 106 41 3✓ | 40.263✓ | -11.559 | -1 | 38.568 | 0 | -130779.092 | -68825.332 | -7.727 | 89.324120 | |
| 57BL-33 | 57BL-34✓ | 89 54 54 | 16 35 57✓ | 18.407✓ | 17.640 | 0 | 5.258 | 0 | -130761.452 | -68820.074 | 36.099 | 636.786360 | |
| 57BL-34 | 57BL-21✓ | 76 25 4 | 273 1 1✓ | 41.414✓ | 2.180 | -1 | -41.357 | 0 | -130759.273 | -68861.431 | 0.000 | 0.000000 | |
| TOTAL.. | ソツカクスク= 4 | 360 0 0 | | 108.704✓ | 0.002 | -2✓ | 0.001 | -1✓ | | | ハイメンセキ= | 1088.069414 | |
| | | | | | | | | | | | 1/2= | 544.03 | +0.00 |
| | | | | | | | | | | | メンセキ= | 544.03✓ | |

*** メンセキ ケイサン (ハイイウキヨホウ) ***

チクメイ ... ミヤコタチク トチカクセイリシキヨウ

セリ NO... 57BL(3)✓

| NO. | NO. | ANGLE | AZIMUTH | | | LENGTH | DX | * | DY | * | X | Y | DMD | 2A | カーブメンセキ |
|---------|-----------|----------|---------|----|-----|---------|---------|----|---------|----|-------------|------------|-----------|------------|---------|
| 57BL-33 | 57BL-35✓ | | 286 | 41 | 3 | | | | | | -130773.271 | -68844.751 | | | |
| 57BL-35 | 57BL-37✓ | 90 0 0 | 196 | 41 | 3✓ | 23.246✓ | -22.267 | 0 | -6.674 | 0 | -130795.538 | -68851.425 | -26.093 | 581.012831 | |
| 57BL-37 | 57BL-32✓ | 90 0 0 | 106 | 41 | 3✓ | 20.307✓ | -5.830 | 0 | 19.452 | 0 | -130801.368 | -68831.973 | -13.315 | 77.626450 | |
| 57BL-32 | 57BL-33✓ | 89 54 54 | 16 | 35 | 57✓ | 23.246✓ | 22.277 | -1 | 6.641 | 0 | -130779.092 | -68825.332 | 12.778 | 284.642728 | |
| 57BL-33 | 57BL-35✓ | 90 5 6 | 286 | 41 | 3✓ | 20.272✓ | 5.820 | 1 | -19.419 | 0 | -130773.271 | -68844.751 | 0.000 | 0.000000 | |
| TOTAL.. | ソツカクスク= 4 | 360 0 0 | | | | 87.071 | 0.000 | 0✓ | 0.000 | 0✓ | | | ハイイウキヨホウ= | 943.282009 | |
| | | | | | | | | | | | | | 1/2= | 471.64 | +0.00 |
| | | | | | | | | | | | | | メンセキ= | 471.64✓ | |

セリ NO... 57BL(4)✓

| | | | | | | | | | | | | | | | |
|---------|-----------|----------|-----|----|-----|---------|---------|----|---------|----|-------------|------------|-----------|------------|-------|
| 57BL-32 | 57BL-37✓ | | 286 | 41 | 3 | | | | | | -130795.538 | -68851.425 | | | |
| 57BL-37 | 57BL-38✓ | 90 0 0 | 196 | 41 | 3✓ | 19.743✓ | -18.912 | 0 | -5.668 | 0 | -130814.450 | -68857.093 | -25.120 | 475.069440 | |
| 57BL-38 | 57BL-31✓ | 90 0 0 | 106 | 41 | 3✓ | 20.336✓ | -5.838 | 0 | 19.480 | 0 | -130820.288 | -68837.613 | -11.308 | 66.016104 | |
| 57BL-31 | 57BL-32✓ | 89 54 54 | 16 | 35 | 57✓ | 19.743✓ | 18.920 | 0 | 5.640 | 0 | -130801.368 | -68831.973 | 13.812 | 261.323040 | |
| 57BL-32 | 57BL-37✓ | 90 5 6 | 286 | 41 | 3✓ | 20.307✓ | 5.830 | 0 | -19.452 | 0 | -130795.538 | -68851.425 | 0.000 | 0.000000 | |
| TOTAL.. | ソツカクスク= 4 | 360 0 0 | | | | 80.129 | 0.000 | 0✓ | 0.000 | 0✓ | | | ハイイウキヨホウ= | 802.408584 | |
| | | | | | | | | | | | | | 1/2= | 401.20 | +0.00 |
| | | | | | | | | | | | | | メンセキ= | 401.20✓ | |

*** メンセキ ケイサン (ハイオウキヨホウ) ***

チクメイ ... ミヤコタチク トチクカクセイリシキヨウ

| | | | | | | | | | | | | | セリ NO... 57BL(5)✓ | | カ-フイメンセキ | | |
|---------|-----------|-------|----|----|---------|----|------|---------|--------|----|---------|----|-------------------|------------|----------|------------|-------|
| NO. | NO. | ANGLE | | | AZIMUTH | | | LENGTH | DX | * | DY | * | X | Y | DMD | 2A | |
| 57BL-31 | 57BL-38✓ | | | | 286 | 41 | 3 | | | | | | -130814.450 | -68857.093 | | | |
| 57BL-38 | 57BL-39✓ | 90 | 0 | 0 | 196 | 41 | 3✓ | 6.765✓ | -6.480 | 0 | -1.942 | 0 | -130820.930 | -68859.035 | -21.422 | 138.814560 | |
| 57BL-39 | 57BL-30✓ | 90 | 0 | 0 | 106 | 41 | 3✓ | 20.346✓ | -5.841 | 0 | 19.489 | 1 | -130826.771 | -68839.545 | -3.874 | 22.628034 | |
| 57BL-30 | 57BL-31✓ | 89 | 54 | 54 | 16 | 35 | 5.7✓ | 6.765✓ | 6.483 | 0 | 1.933 | -1 | -130820.288 | -68837.613 | 17.548 | 113.763684 | |
| 57BL-31 | 57BL-38✓ | 90 | 5 | 6 | 286 | 41 | 3✓ | 20.336✓ | 5.838 | 0 | -19.480 | 0 | -130814.450 | -68857.093 | 0.000 | 0.000000 | |
| TOTAL.. | ソツカクスウ= 4 | 360 | 0 | 0 | | | | 54.212 | 0.000 | 0✓ | 0.000 | 0✓ | | | ハイメンセキ= | 275.206278 | |
| | | | | | | | | | | | | | | | 1/2= | 137.60 | +0.00 |
| | | | | | | | | | | | | | | | メンセキ= | 137.60✓ | |

| | | | | | | | | | | | | | セリ NO... 57BL(6)✓ | | | | |
|---------|-----------|-----|----|----|-----|----|------|---------|---------|----|---------|-----|-------------------|------------|---------|------------|-------|
| 57BL-30 | 57BL-39✓ | | | | 286 | 41 | 3 | | | | | | -130820.930 | -68859.035 | | | |
| 57BL-39 | 57BL-40✓ | 90 | 0 | 0 | 196 | 41 | 3✓ | 14.111✓ | -13.517 | 0 | -4.051 | 0 | -130834.447 | -68863.086 | -23.541 | 318.203697 | |
| 57BL-40 | 57BL-29✓ | 90 | 0 | 0 | 106 | 41 | 3✓ | 20.367✓ | -5.847 | 0 | 19.510 | 0 | -130840.294 | -68843.576 | -8.082 | 47.255454 | |
| 57BL-29 | 57BL-30✓ | 89 | 54 | 54 | 16 | 35 | 5.7✓ | 14.111✓ | 13.523 | 0 | 4.031 | 0 | -130826.771 | -68839.545 | 15.459 | 209.052057 | |
| 57BL-30 | 57BL-39✓ | 90 | 5 | 6 | 286 | 41 | 3✓ | 20.346✓ | 5.841 | 0 | -19.489 | -1 | -130820.930 | -68859.035 | 0.000 | 0.000000 | |
| TOTAL.. | ソツカクスウ= 4 | 360 | 0 | 0 | | | | 68.935 | 0.000 | 0✓ | 0.001 | -1✓ | | | ハイメンセキ= | 574.511208 | |
| | | | | | | | | | | | | | | | 1/2= | 287.25 | +0.00 |
| | | | | | | | | | | | | | | | メンセキ= | 287.25✓ | |

*** メンセキ ケイザン (ハイオウキヨホウ) ***

チクメイ ミヤコタチク トチクカクセイリシキヨウ

レイ NO... 57BL(7)✓

| NO. | INO. | ANGLE | AZIMUTH | LENGTH | DX | * | DY | * | X | Y | DMD | 2A | カーブメンセキ |
|---------|-----------|----------|-----------|---------|--------|-----|---------|----|-------------|------------|---------|------------|---------|
| 57BL-29 | 57BL-40✓ | | 286 41 3 | | | | | | -130834.447 | -68863.086 | | | |
| 57BL-40 | 57BL-42✓ | 90 0 0 | 196 41 3✓ | 9.682✓ | -9.274 | 0 | -2.780 | 0 | -130843.721 | -68865.866 | -22.290 | 206.717460 | |
| 57BL-42 | 57BL-28✓ | 90 0 0 | 106 41 3✓ | 20.381✓ | -5.851 | 0 | 19.523 | 1 | -130849.572 | -68846.342 | -5.546 | 32.449646 | |
| 57BL-28 | 57BL-29✓ | 89 54 54 | 16 35 57✓ | 9.682✓ | 9.279 | -1 | 2.766 | 0 | -130840.294 | -68843.576 | 16.744 | 155.350832 | |
| 57BL-29 | 57BL-40✓ | 90 5 6 | 286 41 3✓ | 20.367✓ | 5.847 | 0 | -19.510 | 0 | -130834.447 | -68863.086 | 0.000 | 0.000000 | |
| TOTAL.. | ツツカクスウ= 4 | 360 0 0 | | 60.112 | 0.001 | -1✓ | -0.001 | 1✓ | | | ハイメンセキ= | 394.517938 | |
| | | | | | | | | | | | 1/2= | 197.25 | +0.00 |
| | | | | | | | | | | | メンセキ= | 197.25✓ | |

レイ NO... 57BL(8)✓

| | | | | | | | | | | | | | |
|---------|-----------|-----------|-----------|---------|---------|----|---------|-----|-------------|------------|---------|------------|-------|
| 57BL-28 | 57BL-42✓ | | 286 41 3 | | | | | | -130843.721 | -68865.866 | | | |
| 57BL-42 | 57BL-27✓ | 90 0 0 | 196 41 3✓ | 15.315✓ | -14.670 | -1 | -4.397 | 0 | -130858.392 | -68870.263 | -23.921 | 350.944991 | |
| 57BL-27 | 57BL- 6✓ | 76 24 41 | 93 5 44✓ | 17.928✓ | -0.968 | 0 | 17.902 | 0 | -130859.360 | -68852.361 | -10.416 | 10.082688 | |
| 57BL- 6 | 57BL- 7✓ | 140 2 21 | 53 8 5✓ | 4.992✓ | 2.995 | 0 | 3.994 | 0 | -130856.365 | -68848.367 | 11.480 | 34.382600 | |
| 57BL- 7 | 57BL-28✓ | 143 27 52 | 16 35 57✓ | 7.087✓ | 6.792 | 1 | 2.025 | 0 | -130849.572 | -68846.342 | 17.499 | 118.870707 | |
| 57BL-28 | 57BL-42✓ | 90 5 6 | 286 41 3✓ | 20.381✓ | 5.851 | 0 | -19.523 | -1 | -130843.721 | -68865.866 | 0.000 | 0.000000 | |
| TOTAL.. | ツツカクスウ= 5 | 540 0 0 | | 65.703 | 0.000 | 0✓ | 0.001 | -1✓ | | | ハイメンセキ= | 514.280986 | |
| | | | | | | | | | | | 1/2= | 257.14 | +0.00 |
| | | | | | | | | | | | メンセキ= | 257.14✓ | |

*** メンセキ ケイサン (ハ"イオウキヨホウ) ***

チクメイ ... ミヤコタ"チク トチクカクセイリシ"キ"ヨウ

セリ NO... 57BL(9) ✓

| NO. | NO. | ANGLE | AZIMUTH | LENGTH | DX | * | DY | * | X | Y | DMD | 2A | カ-フ"メンセキ |
|---------|-----------|-----------|-------------|----------|---------|-----|---------|-----|-------------|------------|----------|------------|----------|
| 57BL-41 | 57BL-26 ✓ | | 286 41 3 ✓ | | | | | | -130836.128 | -68884.450 | | | |
| 57BL-26 | 57BL- 4 ✓ | 90 0 0 | 196 41 3 ✓ | 18.059 ✓ | -17.299 | -1 | -5.185 | 0 | -130853.428 | -68889.635 | -24.325 | 420.822500 | |
| 57BL- 4 | 57BL- 5 ✓ | 128 1 35 | 144 42 38 ✓ | 4.989 ✓ | -4.072 | 0 | 2.882 | 0 | -130857.500 | -68886.753 | -26.628 | 108.429216 | |
| 57BL- 5 | 57BL-27 ✓ | 128 23 6 | 93 5 44 ✓ | 16.514 ✓ | -0.892 | 0 | 16.490 | 0 | -130858.392 | -68870.263 | -7.256 | 6.472352 | |
| 57BL-27 | 57BL-41 ✓ | 103 35 19 | 16 41 3 ✓ | 17.253 ✓ | 16.527 | 0 | 4.953 | 0 | -130841.865 | -68865.310 | 14.187 | 234.468549 | |
| 57BL-41 | 57BL-26 ✓ | 90 0 0 | 286 41 3 ✓ | 19.981 ✓ | 5.736 | 1 | -19.140 | 0 | -130836.128 | -68884.450 | 0.000 | 0.000000 | |
| TOTAL.. | ソツカクスク= 5 | 540 0 0 | | 76.796 | 0.000 | 0 ✓ | 0.000 | 0 ✓ | | | ハ"イメンセキ= | 770.192617 | |
| | | | | | | | | | | | 1/2= | 385.09 | +0.00 |
| | | | | | | | | | | | メンセキ= | 385.09 ✓ | |

セリ NO... 57BL(10) ✓

| | | | | | | | | | | | | | |
|---------|-----------|---------|------------|----------|---------|-----|---------|-----|-------------|------------|----------|-------------|-------|
| 57BL-38 | 57BL-25 ✓ | | 286 41 3 ✓ | | | | | | -130808.713 | -68876.233 | | | |
| 57BL-25 | 57BL-26 ✓ | 90 0 0 | 196 41 3 ✓ | 28.620 ✓ | -27.415 | 0 | -8.217 | 0 | -130836.128 | -68884.450 | -27.357 | 749.992155 | |
| 57BL-26 | 57BL-41 ✓ | 90 0 0 | 106 41 3 ✓ | 19.981 ✓ | -5.736 | -1 | 19.140 | 0 | -130841.865 | -68865.310 | -16.434 | 94.281858 | |
| 57BL-41 | 57BL-38 ✓ | 90 0 0 | 16 41 3 ✓ | 28.620 ✓ | 27.415 | 0 | 8.217 | 0 | -130814.450 | -68857.093 | 10.923 | 299.454045 | |
| 57BL-38 | 57BL-25 ✓ | 90 0 0 | 286 41 3 ✓ | 19.981 ✓ | 5.736 | 1 | -19.140 | 0 | -130808.713 | -68876.233 | 0.000 | 0.000000 | |
| TOTAL.. | ソツカクスク= 4 | 360 0 0 | | 97.202 | 0.000 | 0 ✓ | 0.000 | 0 ✓ | | | ハ"イメンセキ= | 1143.728058 | |
| | | | | | | | | | | | 1/2= | 571.86 | +0.00 |
| | | | | | | | | | | | メンセキ= | 571.86 ✓ | |

*** ムンセキ ケイサン (ハ"イオウキヨホウ) ***

チクメイ ... ミヤコタ"チク トチクカクセイリシ"キ"ヨウ

レイリ NO... 57BL(11)✓

| NO. | NO. | ANGLE | AZIMUTH | LENGTH | DX | * | DY | * | X | Y | DMD | 2A | カ-フ"ムンセキ |
|---------|-----------|---------|-----------|---------|---------|----|---------|----|-------------|------------|----------|------------|----------|
| 57BL-37 | 57BL-24✓ | | 286 41 3 | | | | | | -130789.801 | -68870.565 | | | |
| 57BL-24 | 57BL-25✓ | 90 0 0 | 196 41 3✓ | 19.743✓ | -18.912 | 0 | -5.668 | 0 | -130808.713 | -68876.233 | -24.808 | 469.168896 | |
| 57BL-25 | 57BL-38✓ | 90 0 0 | 106 41 3✓ | 19.981✓ | -5.736 | -1 | 19.140 | 0 | -130814.450 | -68857.093 | -11.336 | 65.034632 | |
| 57BL-38 | 57BL-37✓ | 90 0 0 | 16 41 3✓ | 19.743✓ | 18.912 | 0 | 5.668 | 0 | -130795.538 | -68851.425 | 13.472 | 254.782464 | |
| 57BL-37 | 57BL-24✓ | 90 0 0 | 286 41 3✓ | 19.981✓ | 5.736 | 1 | -19.140 | 0 | -130789.801 | -68870.565 | 0.000 | 0.000000 | |
| TOTAL.. | ソツカクスク= 4 | 360 0 0 | | 79.448 | 0.000 | 0✓ | 0.000 | 0✓ | | | ハ"イムンセキ= | 788.985992 | |
| | | | | | | | | | | | 1/2= | 394.49 | +0.00 |
| | | | | | | | | | | | ムンセキ= | 394.49✓ | |

レイリ NO... 57BL(12)✓

| | | | | | | | | | | | | | |
|---------|-----------|---------|-----------|---------|--------|----|---------|----|-------------|------------|----------|-----------|-------|
| 57BL-36 | 57BL-23✓ | | 286 41 3 | | | | | | -130788.776 | -68870.258 | | | |
| 57BL-23 | 57BL-24✓ | 90 0 0 | 196 41 3✓ | 1.071✓ | -1.026 | 1 | -0.307 | 0 | -130789.801 | -68870.565 | -19.448 | 19.934200 | |
| 57BL-24 | 57BL-37✓ | 90 0 0 | 106 41 3✓ | 19.981✓ | -5.736 | -1 | 19.140 | 0 | -130795.538 | -68851.425 | -0.615 | 3.528255 | |
| 57BL-37 | 57BL-36✓ | 90 0 0 | 16 41 3✓ | 1.071✓ | 1.026 | 0 | 0.307 | 1 | -130794.512 | -68851.117 | 18.833 | 19.322658 | |
| 57BL-36 | 57BL-23✓ | 90 0 0 | 286 41 3✓ | 19.981✓ | 5.736 | 0 | -19.140 | -1 | -130788.776 | -68870.258 | 0.000 | 0.000000 | |
| TOTAL.. | ソツカクスク= 4 | 360 0 0 | | 42.104 | 0.000 | 0✓ | 0.000 | 0✓ | | | ハ"イムンセキ= | 42.785113 | |
| | | | | | | | | | | | 1/2= | 21.39 | +0.00 |
| | | | | | | | | | | | ムンセキ= | 21.39✓ | |

*** メンセキ ケイサン (ハイオウキヨホウ) ***

チクメイ ... ミヤコタチク トチクカクセイリシキヨウ

セイリ NO... 57BL(13)✓

| NO. | NO. | ANGLE | AZIMUTH | LENGTH | DX | * | DY | * | X | Y | DMD | 2A | カ-クメンセキ |
|---------|-----------|----------|------------|---------|---------|----|---------|----|-------------|------------|---------|------------|---------|
| 57BL-35 | 57BL-22✓ | | 286 41 3 | | | | | | -130767.532 | -68863.900 | | | |
| 57BL-22 | 57BL-3✓ | 89 57 23 | 196 38 26✓ | 10.924✓ | -10.467 | 0 | -3.128 | 0 | -130777.999 | -68867.028 | -22.277 | 233.173359 | |
| 57BL-3 | 57BL-23✓ | 180 2 37 | 196 41 3✓ | 11.251✓ | -10.777 | 0 | -3.230 | 0 | -130788.776 | -68870.258 | -28.635 | 308.599395 | |
| 57BL-23 | 57BL-36✓ | 90 0 0 | 106 41 3✓ | 19.981✓ | -5.736 | 0 | 19.140 | 1 | -130794.512 | -68851.117 | -12.724 | 72.984864 | |
| 57BL-36 | 57BL-35✓ | 90 0 0 | 16 41 3✓ | 22.175✓ | 21.241 | 0 | 6.366 | 0 | -130773.271 | -68844.751 | 12.783 | 271.523703 | |
| 57BL-35 | 57BL-22✓ | 90 0 0 | 286 41 3✓ | 19.991✓ | 5.739 | 0 | -19.149 | 0 | -130767.532 | -68863.900 | 0.000 | 0.000000 | |
| TOTAL.. | ソツカクヌウ= 5 | 540 0 0 | | 84.322 | 0.000 | 0✓ | -0.001 | 1✓ | | | ハイメンセキ= | 886.281321 | |
| | | | | | | | | | | | 1/2= | 443.14 | +0.00 |
| | | | | | | | | | | | メンセキ= | 443.14✓ | |

*** ケツコウ トラハース ***

チクメイ ... ミヤコタチク トチクカクセイリシキヨウ

| NO. | NO. | ANGLE | * | AZIMUTH | LENGTH | DX | * | DY | * | X | Y | NO. |
|---------|-----------|---------|---|-------------|----------|---------|-----|---------|------|-------------|------------|---------|
| | 57BL- 2 ✓ | | | | | | | | | -130755.957 | -68860.440 | 57BL- 2 |
| 57BL- 2 | 57BL-21 ✓ | | | 196 38 26 ✓ | 3.461 ✓ | -3.316 | 0 | -0.991 | 0 | -130759.273 | -68861.431 | 57BL-21 |
| 57BL-21 | 57BL-22 ✓ | 180 0 0 | | 196 38 26 ✓ | 8.620 ✓ | -8.259 | 0 | -2.468 | -1 | -130767.532 | -68863.900 | 57BL-22 |
| 57BL-22 | 57BL- 3 ✓ | 180 0 0 | | 196 38 26 ✓ | 10.924 ✓ | -10.467 | 0 | -3.128 | 0 | -130777.999 | -68867.028 | 57BL- 3 |
| | TOTAL.. | 360 0 0 | | | 23.005 ✓ | -22.042 | 0 ✓ | -6.587 | -1 ✓ | | | |
| | 57BL- 3 ✓ | | | | | | | | | -130777.999 | -68867.028 | 57BL- 3 |
| 57BL- 3 | 57BL-23 ✓ | | | 196 41 3 ✓ | 11.251 ✓ | -10.777 | 0 | -3.230 | 0 | -130788.776 | -68870.258 | 57BL-23 |
| 57BL-23 | 57BL-24 ✓ | 180 0 0 | | 196 41 3 ✓ | 1.071 ✓ | -1.026 | 1 | -0.307 | 0 | -130789.801 | -68870.565 | 57BL-24 |
| 57BL-24 | 57BL-25 ✓ | 180 0 0 | | 196 41 3 ✓ | 19.743 ✓ | -18.912 | 0 | -5.668 | 0 | -130808.713 | -68876.233 | 57BL-25 |
| 57BL-25 | 57BL-26 ✓ | 180 0 0 | | 196 41 3 ✓ | 28.620 ✓ | -27.415 | 0 | -8.217 | 0 | -130836.128 | -68884.450 | 57BL-26 |
| 57BL-26 | 57BL- 4 ✓ | 180 0 0 | | 196 41 3 ✓ | 18.059 ✓ | -17.299 | -1 | -5.185 | 0 | -130853.428 | -68889.635 | 57BL- 4 |
| | TOTAL.. | 720 0 0 | | | 78.744 ✓ | -75.429 | 0 ✓ | -22.607 | 0 ✓ | | | |
| | 57BL- 5 ✓ | | | | | | | | | -130857.500 | -68886.753 | 57BL- 5 |
| 57BL- 5 | 57BL-27 ✓ | | | 93 5 44 ✓ | 16.514 ✓ | -0.892 | 0 | 16.490 | 0 | -130858.392 | -68870.263 | 57BL-27 |
| 57BL-27 | 57BL- 6 ✓ | 180 0 0 | | 93 5 44 ✓ | 17.928 ✓ | -0.968 | 0 | 17.902 | 0 | -130859.360 | -68852.361 | 57BL- 6 |
| | TOTAL.. | 180 0 0 | | | 34.442 ✓ | -1.860 | 0 ✓ | 34.392 | 0 ✓ | | | |
| | 57BL- 7 ✓ | | | | | | | | | -130856.365 | -68848.367 | 57BL- 7 |
| 57BL- 7 | 57BL-28 ✓ | | | 16 35 57 ✓ | 7.087 ✓ | 6.792 | 1 | 2.025 | 0 | -130849.572 | -68846.342 | 57BL-28 |
| 57BL-28 | 57BL-29 ✓ | 180 0 0 | | 16 35 57 ✓ | 9.682 ✓ | 9.279 | -1 | 2.766 | 0 | -130840.294 | -68843.576 | 57BL-29 |
| 57BL-29 | 57BL-30 ✓ | 180 0 0 | | 16 35 57 ✓ | 14.111 ✓ | 13.523 | 0 | 4.031 | 0 | -130826.771 | -68839.545 | 57BL-30 |
| 57BL-30 | 57BL-31 ✓ | 180 0 0 | | 16 35 57 ✓ | 6.765 ✓ | 6.483 | 0 | 1.933 | -1 | -130820.288 | -68837.613 | 57BL-31 |

*** ケツコウ トラハース ***

チクメイ ... ミヤコタチク トチクカクセイリシキヨウ

| NO. | NO. | ANGLE | * | AZIMUTH | LENGTH | DX | * | DY | * | X | Y | NO. |
|---------|----------|----------|---|-----------|----------|---------|-----|---------|----|-------------|------------|---------|
| 57BL-31 | 57BL-32✓ | 180 0 0 | | 16 35 57✓ | 19.743✓ | 18.920 | 0 | 5.640 | 0 | -130801.368 | -68831.973 | 57BL-32 |
| 57BL-32 | 57BL-33✓ | 180 0 0 | | 16 35 57✓ | 23.246✓ | 22.277 | -1 | 6.641 | 0 | -130779.092 | -68825.332 | 57BL-33 |
| 57BL-33 | 57BL-34✓ | 180 0 0 | | 16 35 57✓ | 18.407✓ | 17.640 | 0 | 5.258 | 0 | -130761.452 | -68820.074 | 57BL-34 |
| 57BL-34 | 57BL- 8✓ | 180 0 0 | | 16 35 57✓ | 2.550✓ | 2.444 | 0 | 0.728 | 1 | -130759.008 | -68819.345 | 57BL- 8 |
| | TOTAL.. | 1260 0 0 | | | 101.591✓ | 97.358 | -1✓ | 29.022 | 0✓ | | | |
| | 57BL-35✓ | | | | | | | | | -130773.271 | -68844.751 | 57BL-35 |
| 57BL-35 | 57BL-37✓ | | | 196 41 3✓ | 23.246✓ | -22.267 | 0 | -6.674 | 0 | -130795.538 | -68851.425 | 57BL-37 |
| 57BL-37 | 57BL-38✓ | 180 0 0 | | 196 41 3✓ | 19.743✓ | -18.912 | 0 | -5.668 | 0 | -130814.450 | -68857.093 | 57BL-38 |
| 57BL-38 | 57BL-39✓ | 180 0 0 | | 196 41 3✓ | 6.765✓ | -6.480 | 0 | -1.942 | 0 | -130820.930 | -68859.035 | 57BL-39 |
| 57BL-39 | 57BL-40✓ | 180 0 0 | | 196 41 3✓ | 14.111✓ | -13.517 | 0 | -4.051 | 0 | -130834.447 | -68863.086 | 57BL-40 |
| 57BL-40 | 57BL-42✓ | 180 0 0 | | 196 41 3✓ | 9.682✓ | -9.274 | 0 | -2.780 | 0 | -130843.721 | -68865.866 | 57BL-42 |
| 57BL-42 | 57BL-27✓ | 180 0 0 | | 196 41 3✓ | 15.315✓ | -14.670 | -1 | -4.397 | 0 | -130858.392 | -68870.263 | 57BL-27 |
| | TOTAL.. | 900 0 0 | | | 88.862✓ | -85.120 | -1✓ | -25.512 | 0✓ | | | |
| | 57BL-35✓ | | | | | | | | | -130773.271 | -68844.751 | 57BL-35 |
| 57BL-35 | 57BL-36✓ | | | 196 41 3✓ | 22.175✓ | -21.241 | 0 | -6.366 | 0 | -130794.512 | -68851.117 | 57BL-36 |
| 57BL-36 | 57BL-37✓ | 180 0 0 | | 196 41 3✓ | 1.071✓ | -1.026 | 0 | -0.307 | -1 | -130795.538 | -68851.425 | 57BL-37 |
| 57BL-37 | 57BL-38✓ | 180 0 0 | | 196 41 3✓ | 19.743✓ | -18.912 | 0 | -5.668 | 0 | -130814.450 | -68857.093 | 57BL-38 |
| 57BL-38 | 57BL-39✓ | 180 0 0 | | 196 41 3✓ | 6.765✓ | -6.480 | 0 | -1.942 | 0 | -130820.930 | -68859.035 | 57BL-39 |
| 57BL-39 | 57BL-40✓ | 180 0 0 | | 196 41 3✓ | 14.111✓ | -13.517 | 0 | -4.051 | 0 | -130834.447 | -68863.086 | 57BL-40 |
| 57BL-40 | 57BL-41✓ | 180 0 0 | | 196 41 3✓ | 7.744✓ | -7.418 | 0 | -2.223 | -1 | -130841.865 | -68865.310 | 57BL-41 |
| 57BL-41 | 57BL-42✓ | 180 0 0 | | 196 41 3✓ | 1.938✓ | -1.856 | 0 | -0.556 | 0 | -130843.721 | -68865.866 | 57BL-42 |
| 57BL-42 | 57BL-27✓ | 180 0 0 | | 196 41 3✓ | 15.315✓ | -14.670 | -1 | -4.397 | 0 | -130858.392 | -68870.263 | 57BL-27 |

*** ケツコウ トラハ"-入 ***

チクメイ ... ミヤコタチク トチクカクセイリシキヨウ

| NO. | NO. | ANGLE | * | AZIMUTH | LENGTH | DX | * | DY | * | X | Y | NO. |
|---------|-----------|----------|------------|---------|----------|---------|------|---------|------|-------------|------------|---------|
| | TOTAL.. | 1260 0 0 | | | 88.862 ✓ | -85.120 | -1 ✓ | -25.510 | -2 ✓ | | | |
| | 57BL-35 ✓ | | | | | | | | | -130773.271 | -68844.751 | 57BL-35 |
| 57BL-35 | 57BL-36 ✓ | | 196 41 3 ✓ | | 22.175 ✓ | -21.241 | 0 | -6.366 | 0 | -130794.512 | -68851.117 | 57BL-36 |
| 57BL-36 | 57BL-37 ✓ | 180 0 0 | 196 41 3 ✓ | | 1.071 ✓ | -1.026 | 0 | -0.307 | -1 | -130795.538 | -68851.425 | 57BL-37 |
| 57BL-37 | 57BL-38 ✓ | 180 0 0 | 196 41 3 ✓ | | 19.743 ✓ | -18.912 | 0 | -5.668 | 0 | -130814.450 | -68857.093 | 57BL-38 |
| 57BL-38 | 57BL-41 ✓ | 180 0 0 | 196 41 3 ✓ | | 28.620 ✓ | -27.415 | 0 | -8.217 | 0 | -130841.865 | -68865.310 | 57BL-41 |
| 57BL-41 | 57BL-27 ✓ | 180 0 0 | 196 41 3 ✓ | | 17.253 ✓ | -16.527 | 0 | -4.953 | 0 | -130858.392 | -68870.263 | 57BL-27 |
| | TOTAL.. | 720 0 0 | | | 88.862 ✓ | -85.121 | 0 ✓ | -25.511 | -1 ✓ | | | |
| | 57BL-22 ✓ | | | | | | | | | -130767.532 | -68863.900 | 57BL-22 |
| 57BL-22 | 57BL-35 ✓ | | 106 41 3 ✓ | | 19.991 ✓ | -5.739 | 0 | 19.149 | 0 | -130773.271 | -68844.751 | 57BL-35 |
| 57BL-35 | 57BL-33 ✓ | 180 0 0 | 106 41 3 ✓ | | 20.272 ✓ | -5.820 | -1 | 19.419 | 0 | -130779.092 | -68825.332 | 57BL-33 |
| | TOTAL.. | 180 0 0 | | | 40.263 ✓ | -11.559 | -1 ✓ | 38.568 | 0 ✓ | | | |
| | 57BL-24 ✓ | | | | | | | | | -130789.801 | -68870.565 | 57BL-24 |
| 57BL-24 | 57BL-37 ✓ | | 106 41 3 ✓ | | 19.981 ✓ | -5.736 | -1 | 19.140 | 0 | -130795.538 | -68851.425 | 57BL-37 |
| 57BL-37 | 57BL-32 ✓ | 180 0 0 | 106 41 3 ✓ | | 20.307 ✓ | -5.830 | 0 | 19.452 | 0 | -130801.368 | -68831.973 | 57BL-32 |
| | TOTAL.. | 180 0 0 | | | 40.288 ✓ | -11.566 | -1 ✓ | 38.592 | 0 ✓ | | | |
| | 57BL-25 ✓ | | | | | | | | | -130808.713 | -68876.233 | 57BL-25 |
| 57BL-25 | 57BL-38 ✓ | | 106 41 3 ✓ | | 19.981 ✓ | -5.736 | -1 | 19.140 | 0 | -130814.450 | -68857.093 | 57BL-38 |
| 57BL-38 | 57BL-31 ✓ | 180 0 0 | 106 41 3 ✓ | | 20.336 ✓ | -5.838 | 0 | 19.480 | 0 | -130820.288 | -68837.613 | 57BL-31 |
| | TOTAL.. | 180 0 0 | | | 40.317 ✓ | -11.574 | -1 ✓ | 38.620 | 0 ✓ | | | |