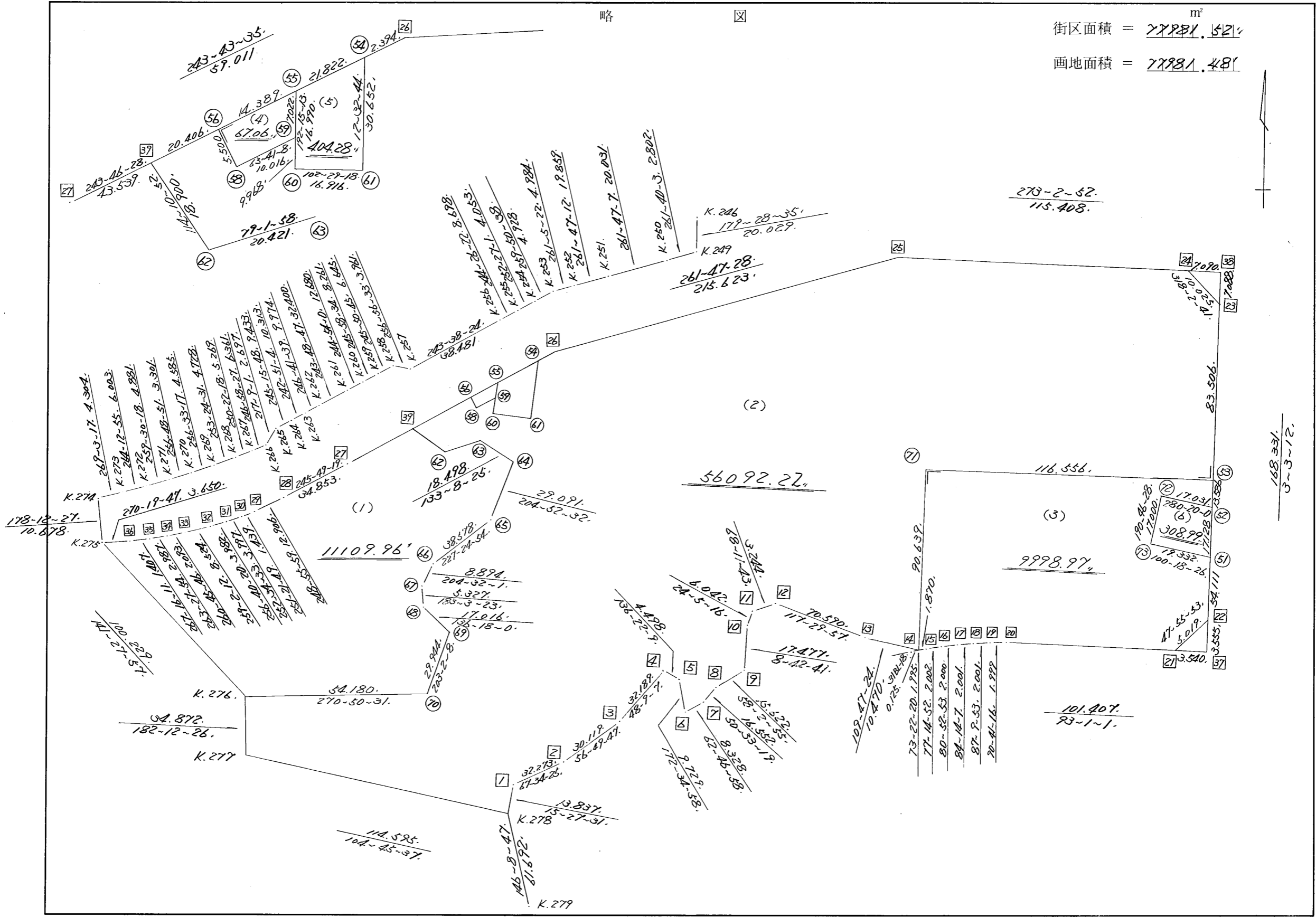


街廓原子一覽表用紙

(29 " BL)

街区面積 = 77781.521^m₂
 画地面積 = 77781.481



街区点番号 1 ~ 39
 K.275 ~ K.278
 筆界点番号 51 ~ 73
 画地番号 (/) ~ (〆)

不二測量株式会社

1/3891
 3-3-12

*** メンセキ ケイサン (ハ"イオウキヨホウ) ***

チクメイ ... ミヤコタ"チク トチクカクセイリシ"キ"ヨウ

セリ NO... 29BL ✓

NO.	NO.	ANGLE	AZIMUTH	LENGTH	DX	*	DY	*	X	Y	DMD	2A	カ-フ"メンセキ
K.278	29BL- 1 ✓		15 27 31						-131592.699	-70566.701			
29BL- 1	29BL- 2 ✓	232 6 54	67 34 25 ✓	32.273 ✓	12.312	0	29.832	0	-131580.387	-70536.869	33.520	412.698240	
29BL- 2	29BL- 3 ✓	169 15 22	56 49 47 ✓	30.119 ✓	16.479	0	25.211	0	-131563.908	-70511.658	88.563	1459.429677	
29BL- 3	29BL- 4 ✓	171 19 20	48 9 7 ✓	32.189 ✓	21.475	0	23.978	0	-131542.433	-70487.680	137.752	2958.224200	
29BL- 4	29BL- 5 ✓	268 13 2	136 22 9 ✓	4.498 ✓	-3.256	0	3.104	0	-131545.689	-70484.576	164.834	-536.699504	
29BL- 5	29BL- 6 ✓	216 12 49	172 34 58 ✓	9.729 ✓	-9.648	0	1.256	0	-131555.337	-70483.320	169.194	-1632.383712	
29BL- 6	29BL- 7 ✓	70 12 0	62 46 58 ✓	8.328 ✓	3.809	0	7.406	0	-131551.528	-70475.914	177.856	677.453504	
29BL- 7	29BL- 8 ✓	167 46 21	50 33 19 ✓	16.552 ✓	10.516	0	12.782	0	-131541.012	-70463.132	198.044	2082.630704	
29BL- 8	29BL- 9 ✓	187 29 36	58 2 55 ✓	15.622 ✓	8.267	0	13.255	0	-131532.745	-70449.877	224.081	1852.477627	
29BL- 9	29BL-10 ✓	130 39 46	8 42 41 ✓	17.477 ✓	17.275	0	2.647	0	-131515.470	-70447.230	239.983	4145.706325	
29BL-10	29BL-11 ✓	195 22 35	24 5 16 ✓	6.042 ✓	5.516	0	2.466	0	-131509.954	-70444.764	245.096	1351.949536	
29BL-11	29BL-12 ✓	224 6 27	68 11 43 ✓	3.244 ✓	11.205	0	3.012	0	-131508.749	-70441.752	250.574	301.941670	
29BL-12	29BL-13 ✓	229 18 14	117 29 57 ✓	70.590 ✓	-32.594	0	62.615	0	-131541.343	-70379.137	316.201	-10306.255394	
29BL-13	29BL-14 ✓	172 17 27	109 47 24 ✓	10.470 ✓	-3.545	0	9.852	0	-131544.888	-70369.285	388.668	-1377.828060	
29BL-14	29BL-15 ✓	143 34 56	73 22 20 ✓	1.870 ✓	0.535	0	1.792	0	-131544.353	-70367.493	400.312	214.166920	
29BL-15	29BL-16 ✓	183 52 32	77 14 52 ✓	2.002 ✓	0.442	0	1.953	0	-131543.911	-70365.540	404.057	178.593194	
29BL-16	29BL-17 ✓	183 38 1	80 52 53 ✓	2.000 ✓	0.317	0	1.975	0	-131543.594	-70363.565	407.985	129.331245	
29BL-17	29BL-18 ✓	183 21 14	84 14 7 ✓	2.001 ✓	0.201	0	1.991	0	-131543.393	-70361.574	411.951	82.802151	
29BL-18	29BL-19 ✓	182 55 46	87 9 53 ✓	2.001 ✓	0.099	0	1.999	0	-131543.294	-70359.575	415.941	41.178159	
29BL-19	29BL-20 ✓	183 31 23	90 41 16 ✓	1.999 ✓	-0.024	0	1.999	0	-131543.318	-70357.576	419.939	-10.078536	
29BL-20	29BL-21 ✓	182 19 45	93 1 1 ✓	101.407 ✓	-5.337	0	101.266	0	-131548.655	-70256.310	523.204	-2792.339748	
29BL-21	29BL-22 ✓	134 54 52	47 55 53 ✓	5.019 ✓	3.363	0	3.726	0	-131545.292	-70252.584	628.196	2112.623148	
29BL-22	29BL-23 ✓	135 7 19	3 3 12 ✓	168.331 ✓	168.092	0	8.966	0	-131377.200	-70243.618	640.888	107728.145696	
29BL-23	29BL-24 ✓	134 59 29	318 2 41 ✓	10.025 ✓	7.455	0	-6.702	0	-131369.745	-70250.320	643.152	4794.698160	

*** メンセキ ケイサン (ハイイウキヨホウ) ***

チクメイ ... ミヤコタチク トチクカクセイリシキヨウ

セリ NO... 29BL

NO.	INO.	ANGLE	AZIMUTH	LENGTH	DX	* DY *	X	Y	DMD	2A	カ-フメンセキ
29BL-24	29BL-25	135 0 11	273 2 52	115.408	6.136	0 -115.245	0 -131363.609	-70365.565	521.205	3198.113880	
29BL-25	29BL-26	168 44 36	261 47 28	215.623	-30.787	0 -213.414	0 -131394.396	-70578.979	192.546	-5927.913702	
29BL-26	29BL-39	161 56 7	243 43 35	59.011	-26.122	0 -52.915	0 -131420.518	-70631.894	-73.783	1927.359526	
29BL-39	29BL-27	180 2 53	243 46 28	43.539	-19.240	0 -39.057	0 -131439.758	-70670.951	-165.755	3189.126200	
29BL-27	29BL-28	182 2 51	245 49 19	34.853	-14.275	0 -31.796	0 -131454.033	-70702.747	-236.608	3377.579200	
29BL-28	29BL-29	183 6 40	248 55 59	12.906	-4.639	0 -12.043	0 -131458.672	-70714.790	-280.447	1300.993633	
29BL-29	29BL-30	182 25 50	251 21 49	1.439	-0.460	0 -1.364	0 -131459.132	-70716.154	-293.854	135.172840	
29BL-30	29BL-31	181 12 44	252 34 33	3.997	-1.197	0 -3.814	0 -131460.329	-70719.968	-299.032	357.941304	
29BL-31	29BL-32	184 5 47	256 40 20	3.982	-0.918	0 -3.875	0 -131461.247	-70723.843	-306.721	281.569878	
29BL-32	29BL-33	182 21 52	259 2 12	8.524	-1.621	0 -8.368	0 -131462.868	-70732.211	-318.964	517.040644	
29BL-33	29BL-34	181 43 34	260 45 46	2.093	-0.336	0 -2.066	0 -131463.204	-70734.277	-329.398	110.677728	
29BL-34	29BL-35	182 42 8	263 27 54	2.987	-0.340	0 -2.968	0 -131463.544	-70737.245	-334.432	113.706880	
29BL-35	29BL-36	183 48 17	267 16 11	1.407	-0.067	0 -1.405	0 -131463.611	-70738.650	-338.805	22.699935	
29BL-36	K.275	183 3 36	270 19 47	3.650	0.021	0 -3.650	0 -131463.590	-70742.300	-343.860	-7.221060	
K.275	K.276	51 8 10	141 27 57	100.229	-78.403	0 62.441	0 -131541.993	-70679.859	-285.069	22350.264807	
K.276	K.277	220 44 29	182 12 26	34.872	-34.846	0 -1.343	0 -131576.839	-70681.202	-223.971	7804.493466	
K.277	K.278	102 33 11	104 45 37	114.595	-29.196	0 110.813	0 -131606.035	-70570.389	-114.501	3342.971196	
K.278	29BL-1	90 41 54	15 27 31	13.837	13.336	0 3.688	0 -131592.699	-70566.701	0.000	0.000000	
TOTAL..	ソツカスウ= 41	7020 0 0		1326.740	0.000	0 0.000	0 0		ハイイメンセキ=	155963.041557	
									1/2=	77981.52	+0.00
									メンセキ=	77981.52	

*** メンセキ ケイサン (ハ"イオウキヨホウ) ***

チクメイ ... ミヤコタ"チク トチクカクセイリシ"キ"ヨウ

セリ NO... 29BL(1,2)

NO.	NO.	ANGLE	AZIMUTH	LENGTH	DX	*	DY	*	X	Y	DMD	2A	カ-フ"メンセキ
K.276	K.277		182 12 26						-131576.839	-70681.202			
K.277	K.278	102 33 11	104 45 37	114.595	-29.196	0	110.813	0	-131606.035	-70570.389	109.470	-3196.086120	
K.278	29BL- 1	90 41 54	15 27 31	13.837	13.336	0	3.688	0	-131592.699	-70566.701	223.971	2986.877256	
29BL- 1	29BL- 2	232 6 54	67 34 25	32.273	12.312	0	29.832	0	-131580.387	-70536.869	257.491	3170.229192	
29BL- 2	29BL- 3	169 15 22	56 49 47	30.119	16.479	0	25.211	0	-131563.908	-70511.658	312.534	5150.247786	
29BL- 3	29BL- 4	171 19 20	48 9 7	32.189	21.475	0	23.978	0	-131542.433	-70487.680	361.723	7768.001425	
29BL- 4	29BL- 5	268 13 2	136 22 9	4.498	-3.256	0	3.104	0	-131545.689	-70484.576	388.805	-1265.949080	
29BL- 5	29BL- 6	216 12 49	172 34 58	9.729	-9.648	0	1.256	0	-131555.337	-70483.320	393.165	-3793.255920	
29BL- 6	29BL- 7	70 12 0	62 46 58	8.328	3.809	0	7.406	0	-131551.528	-70475.914	401.827	1530.559043	
29BL- 7	29BL- 8	167 46 21	50 33 19	16.552	10.516	0	12.782	0	-131541.012	-70463.132	422.015	4437.909740	
29BL- 8	29BL- 9	187 29 36	58 2 55	15.622	8.267	0	13.255	0	-131532.745	-70449.877	448.052	3704.045884	
29BL- 9	29BL-10	130 39 46	8 42 41	17.477	17.275	0	2.647	0	-131515.470	-70447.230	463.954	8014.805350	
29BL-10	29BL-11	195 22 35	24 5 16	6.042	5.516	0	2.466	0	-131509.954	-70444.764	469.067	2587.373572	
29BL-11	29BL-12	224 6 27	68 11 43	3.244	1.205	0	3.012	0	-131508.749	-70441.752	474.545	571.826725	
29BL-12	29BL-13	229 18 14	117 29 57	70.590	-32.594	0	62.615	0	-131541.343	-70379.137	540.172	-17606.366168	
29BL-13	29BL-14	172 17 27	109 47 24	10.470	-3.545	0	9.852	0	-131544.888	-70369.285	612.639	-2171.805255	
29BL-14	29BL-71	73 15 48	3 3 12	90.639	90.510	0	4.828	0	-131454.378	-70364.457	627.319	56778.642690	
29BL-71	29BL-53	270 0 0	93 3 12	116.556	-6.208	-1	116.391	0	-131460.587	-70248.066	748.538	-4647.672442	
29BL-53	29BL-23	90 0 0	3 3 12	83.506	83.387	0	4.448	0	-131377.200	-70243.618	869.377	72494.739899	
29BL-23	29BL-24	134 59 29	318 2 41	10.025	7.455	0	-6.702	0	-131369.745	-70250.320	867.123	6464.401965	
29BL-24	29BL-25	135 0 11	273 2 52	115.408	6.136	0	-115.245	0	-131363.609	-70365.565	745.176	4572.399936	
29BL-25	29BL-26	168 44 36	261 47 28	215.623	-30.787	0	-213.414	0	-131394.396	-70578.979	416.517	-12823.308879	
29BL-26	29BL-54	161 56 7	243 43 35	2.394	-1.060	0	-2.147	1	-131395.456	-70581.125	200.957	-213.014420	
29BL-54	29BL-61	128 49 9	192 32 44	30.652	-29.920	0	-6.658	0	-131425.376	-70587.783	192.153	-5749.217760	

*** メンセキ ケイサン (ハ"イオウキヨホウ) ***

チクメイ ... ミヤコタ"チク トチクカクセイリシ"キ"ヨウ

セリ NO... 29BL(1,2)

NO.	NO.	ANGLE	AZIMUTH	LENGTH	DX	*	DY	*	X	Y	DMD	2A	カ-フ"メンセキ
29BL-61	29BL-60	269 56 34	282 29 18	16.916	3.658	0	-16.516	0	-131421.718	-70604.299	168.979	618.125182	
29BL-60	29BL-59	269 45 55	12 15 13	9.968	9.741	0	2.116	0	-131411.977	-70602.183	154.579	1505.754039	
29BL-59	29BL-58	51 25 55	243 41 8	10.016	-4.440	0	-8.978	0	-131416.417	-70611.161	147.717	-655.863480	
29BL-58	29BL-56	270 2 47	333 43 55	5.500	4.932	0	-2.434	-1	-131411.485	-70613.596	136.304	672.251328	
29BL-56	29BL-39	89 59 40	243 43 35	20.406	-9.033	0	-18.298	0	-131420.518	-70631.894	115.571	-1043.952843	
29BL-39	29BL-27	180 2 53	243 46 28	43.539	-19.240	0	-39.057	0	-131439.758	-70670.951	58.216	-1120.075840	
29BL-27	29BL-28	182 2 51	245 49 19	34.853	-14.275	0	-31.796	0	-131454.033	-70702.747	-12.637	180.393175	
29BL-28	29BL-29	183 6 40	248 55 59	12.906	-4.639	0	-12.043	0	-131458.672	-70714.790	-56.476	261.992164	
29BL-29	29BL-30	182 25 50	251 21 49	1.439	-0.460	0	-1.364	0	-131459.132	-70716.154	-69.883	32.146180	
29BL-30	29BL-31	181 12 44	252 34 33	3.997	-1.197	0	-3.814	0	-131460.329	-70719.968	-75.061	89.848017	
29BL-31	29BL-32	184 5 47	256 40 20	3.982	-0.918	0	-3.875	0	-131461.247	-70723.843	-82.750	75.964500	
29BL-32	29BL-33	182 21 52	259 2 12	8.524	-1.621	0	-8.368	0	-131462.868	-70732.211	-94.993	153.983653	
29BL-33	29BL-34	181 43 34	260 45 46	2.093	-0.336	0	-2.066	0	-131463.204	-70734.277	-105.427	35.423472	
29BL-34	29BL-35	182 42 8	263 27 54	2.987	-0.340	0	-2.968	0	-131463.544	-70737.245	-110.461	37.556740	
29BL-35	29BL-36	183 48 17	267 16 11	1.407	-0.067	0	-1.405	0	-131463.611	-70738.650	-114.834	7.693878	
29BL-36	K.275	183 3 36	270 19 47	3.650	0.021	0	-3.650	0	-131463.590	-70742.300	-119.889	-2.517669	
K.275	K.276	51 8 10	141 27 57	100.229	-78.403	0	62.441	0	-131541.993	-70679.859	-61.098	4790.266494	
K.276	K.277	220 44 29	182 12 26	34.872	-34.846	0	-1.343	0	-131576.839	-70681.202	0.000	0.000000	
TOTAL..	ツツカク入= 41	7020	0 0	1367.652	0.001	-1	0.000	0			ハ"イメンセキ=	134404.373409	
											1/2=	67202.18	+0.00
											メンセキ=	67202.18	

*** メンセキ ケイサン (ハイイウキヨホウ) ***

チクメイ ... ミヤコタチク トチクカクセイリシキヨウ

セイリ NO... 29BL (//) ✓

NO.	NO.	ANGLE	AZIMUTH	LENGTH	DX	*	DY	*	X	Y	DMD	2A	カ-フ"メンセキ	
K.275	K.276 ✓		141 27 57						-131541.993	-70679.859				
K.276	29BL-70 ✓	129 22 34	90 50 31 ✓	54.180 ✓	-0.796	0	54.174	0	-131542.789	-70625.685	116.615	-92.825540		
29BL-70	29BL-69 ✓	112 11 37	23 2 8 ✓	29.944 ✓	27.556	0	11.717	0	-131515.233	-70613.968	182.506	5029.135336		
29BL-69	29BL-68 ✓	113 15 52	316 18 0 ✓	17.016 ✓	12.302	0	-11.756	0	-131502.931	-70625.724	182.467	2244.709034		
29BL-68	29BL-67 ✓	226 45 23	3 3 23 ✓	5.327 ✓	5.319	0	0.284	0	-131497.612	-70625.440	170.995	909.522405		
29BL-67	29BL-66 ✓	201 28 38	24 32 1 ✓	8.894 ✓	8.091	0	3.693	0	-131489.521	-70621.747	174.972	1415.698452		
29BL-66	29BL-65 ✓	202 52 53	47 24 54 ✓	38.578 ✓	26.105	0	28.404	0	-131463.416	-70593.343	207.069	5405.536245		
29BL-65	29BL-64 ✓	157 27 38	24 52 32 ✓	29.091 ✓	26.392	0	12.237	0	-131437.024	-70581.106	247.710	6537.562320		
29BL-64	29BL-63 ✓	108 15 53	313 8 25 ✓	18.498 ✓	12.649	0	-13.498	0	-131424.375	-70594.604	246.449	3117.333401		
29BL-63	29BL-62 ✓	125 53 33	259 1 58 ✓	20.421 ✓	-3.885	0	-20.048	0	-131428.260	-70614.652	212.903	-827.128155		
29BL-62	29BL-39 ✓	215 8 54	294 10 52 ✓	18.900 ✓	7.742	0	-17.242	0	-131420.518	-70631.894	175.613	1359.595846		
29BL-39	29BL-27 ✓	129 35 36	243 46 28 ✓	43.539 ✓	-19.240	0	-39.057	0	-131439.758	-70670.951	119.314	-2295.601360		
29BL-27	29BL-28 ✓	182 2 51	245 49 19 ✓	34.853 ✓	-14.275	0	-31.796	0	-131454.033	-70702.747	48.461	-691.780775		
29BL-28	29BL-29 ✓	183 6 40	248 55 59 ✓	12.906 ✓	-4.639	0	-12.043	0	-131458.672	-70714.790	4.622	-21.441458		
29BL-29	29BL-30 ✓	182 25 50	251 21 49 ✓	1.439 ✓	-0.460	0	-1.364	0	-131459.132	-70716.154	-8.785	4.041100		
29BL-30	29BL-31 ✓	181 12 44	252 34 33 ✓	3.997 ✓	-1.197	0	-3.814	0	-131460.329	-70719.968	-13.963	16.713711		
29BL-31	29BL-32 ✓	184 5 47	256 40 20 ✓	3.982 ✓	-0.918	0	-3.875	0	-131461.247	-70723.843	-21.652	19.876536		
29BL-32	29BL-33 ✓	182 21 52	259 2 12 ✓	8.524 ✓	-1.621	0	-8.368	0	-131462.868	-70732.211	-33.895	54.943795		
29BL-33	29BL-34 ✓	181 43 34	260 45 46 ✓	2.093 ✓	-0.336	0	-2.066	0	-131463.204	-70734.277	-44.329	14.894544		
29BL-34	29BL-35 ✓	182 42 8	263 27 54 ✓	2.987 ✓	-0.340	0	-2.968	0	-131463.544	-70737.245	-49.363	16.783420		
29BL-35	29BL-36 ✓	183 48 17	267 16 11 ✓	1.407 ✓	-0.067	0	-1.405	0	-131463.611	-70738.650	-53.736	3.600312		
29BL-36	K.275 ✓	183 3 36	270 19 47 ✓	3.650 ✓	0.021	0	-3.650	0	-131463.590	-70742.300	-58.791	-1.234611		
K.275	K.276 ✓	51 8 10	141 27 57 ✓	100.229 ✓	-78.403	0	62.441	0	-131541.993	-70679.859	0.000	0.000000		
TOTAL...	ソツカスウ=	22	3600	0	0		460.455	0.000	0 ✓	0.000	0 ✓	ハイイウメンセキ=	22219.934558	
												1/2=	11109.96	+0.00
												メンセキ=	11109.96 ✓	

*** メンセキ ケイサツ (ハ"イオウキヨホウ) ***

チクメイ ... ミヤコタ"チク トチクカクセイリシ"キ"ヨウ

セイリ NO... 29BL(2) ✓

NO.	NO.	ANGLE	AZIMUTH	LENGTH	DX	*	DY	*	X	Y	DMD	2A	カ-フ"メンセキ
K.276	K.277 ✓		182 12 26						-131576.839	-70681.202			
K.277	K.278 ✓	102 33 11	104 45 37 ✓	114.595 ✓	-29.196	0	110.813	0	-131606.035	-70570.389	109.470	-3196.086120	
K.278	29BL- 1 ✓	90 41 54	15 27 31 ✓	13.837 ✓	13.336	0	3.688	0	-131592.699	-70566.701	223.971	2986.877256	
29BL- 1	29BL- 2 ✓	232 6 54	67 34 25 ✓	32.273 ✓	12.312	0	29.832	0	-131580.387	-70536.869	257.491	3170.229192	
29BL- 2	29BL- 3 ✓	169 15 22	56 49 47 ✓	30.119 ✓	16.479	0	25.211	0	-131563.908	-70511.658	312.534	5150.247786	
29BL- 3	29BL- 4 ✓	171 19 20	48 9 7 ✓	32.189 ✓	21.475	0	23.978	0	-131542.433	-70487.680	361.723	7768.001425	
29BL- 4	29BL- 5 ✓	268 13 2	136 22 9 ✓	4.498 ✓	-3.256	0	3.104	0	-131545.689	-70484.576	388.805	-1265.949080	
29BL- 5	29BL- 6 ✓	216 12 49	172 34 58 ✓	9.729 ✓	-9.648	0	1.256	0	-131555.337	-70483.320	393.165	-3793.255920	
29BL- 6	29BL- 7 ✓	70 12 0	62 46 58 ✓	8.328 ✓	3.809	0	7.406	0	-131551.528	-70475.914	401.827	1530.559043	
29BL- 7	29BL- 8 ✓	167 46 21	50 33 19 ✓	16.552 ✓	10.516	0	12.782	0	-131541.012	-70463.132	422.015	4437.909740	
29BL- 8	29BL- 9 ✓	187 29 36	58 2 55 ✓	15.622 ✓	8.267	0	13.255	0	-131532.745	-70449.877	448.052	3704.045884	
29BL- 9	29BL-10 ✓	130 39 46	8 42 41 ✓	17.477 ✓	17.275	0	2.647	0	-131515.470	-70447.230	463.954	8014.805350	
29BL-10	29BL-11 ✓	195 22 35	24 5 16 ✓	6.042 ✓	5.516	0	2.466	0	-131509.954	-70444.764	469.067	2587.373572	
29BL-11	29BL-12 ✓	224 6 27	68 11 43 ✓	3.244 ✓	1.205	0	3.012	0	-131508.749	-70441.752	474.545	571.826725	
29BL-12	29BL-13 ✓	229 18 14	117 29 57 ✓	70.590 ✓	-32.594	0	62.615	0	-131541.343	-70379.137	540.172	-17606.366168	
29BL-13	29BL- 74 ¹⁴ ✓	172 17 27	109 47 24 ✓	10.470 ✓	-3.545	0	9.852	0	-131544.888	-70369.285	612.639	-2171.805255	
29BL- 74 ¹⁴	29BL-71 ✓	73 15 48	3 3 12 ✓	90.639 ✓	90.510	0	4.828	0	-131454.378	-70364.457	627.319	56778.642690	
29BL-71	29BL-53 ✓	270 0 0	93 3 12 ✓	116.556 ✓	-6.208	-1	116.391	0	-131460.587	-70248.066	748.538	-4647.672442	
29BL-53	29BL-23 ✓	90 0 0	3 3 12 ✓	83.506 ✓	83.387	0	4.448	0	-131377.200	-70243.618	869.377	72494.739899	
29BL-23	29BL-24 ✓	134 59 29	318 2 41 ✓	10.025 ✓	7.455	0	-6.702	0	-131369.745	-70250.320	867.123	6464.401965	
29BL-24	29BL-25 ✓	135 0 11	273 2 52 ✓	115.408 ✓	6.136	0	-115.245	0	-131363.609	-70365.565	745.176	4572.399936	
29BL-25	29BL-26 ✓	168 44 36	261 47 28 ✓	215.623 ✓	-30.787	0	-213.414	0	-131394.396	-70578.979	416.517	-12823.308879	
29BL-26	29BL-54 ✓	161 56 7	243 43 35 ✓	2.394 ✓	-1.060	0	-2.147	1	-131395.456	-70581.125	200.957	-213.014420	
29BL-54	29BL-61 ✓	128 49 9	192 32 44 ✓	30.652 ✓	-29.920	0	-6.658	0	-131425.376	-70587.783	192.153	-5749.217760	

*** メンセキ ケイサン (ハイオウキヨホウ) ***

チクメイ ... ミヤコタマツ トチクカクセイリシキヨウ

セリ NO... 29BL(2) ✓

NO.	NO.	ANGLE	AZIMUTH	LENGTH	DX	*	DY	*	X	Y	DMD	2A	カ-フメンセキ
29BL-61	29BL-60 ✓	269 56 34	282 29 18 ✓	16.916 ✓	3.658	0	-16.516	0	-131421.718	-70604.299	168.979	618.125182	
29BL-60	29BL-59 ✓	269 45 55	12 15 13 ✓	9.968 ✓	9.741	0	2.116	0	-131411.977	-70602.183	154.579	1505.754039	
29BL-59	29BL-58 ✓	51 25 55	243 41 8 ✓	10.016 ✓	-4.440	0	-8.978	0	-131416.417	-70611.161	147.717	-655.863480	
29BL-58	29BL-56 ✓	270 2 27	333 43 35 ✓	5.500 ✓	4.932	0	-2.435	0	-131411.485	-70613.596	136.304	672.251328	
29BL-56	29BL-39 ✓	90 0 0	243 43 35 ✓	20.406 ✓	-9.033	0	-18.298	0	-131420.518	-70631.894	115.571	-1043.952843	
29BL-39	29BL-62 ✓	50 27 17	114 10 52 ✓	18.900 ✓	-7.742	0	17.242	0	-131428.260	-70614.652	114.515	-886.575130	
29BL-62	29BL-63 ✓	144 51 6	79 1 58 ✓	20.421 ✓	3.885	0	20.048	0	-131424.375	-70594.604	151.805	589.762425	
29BL-63	29BL-64 ✓	234 6 27	133 8 25 ✓	18.498 ✓	-12.649	0	13.498	0	-131437.024	-70581.106	185.351	-2344.504799	
29BL-64	29BL-65 ✓	251 44 7	204 52 32 ✓	29.091 ✓	-26.392	0	-12.237	0	-131463.416	-70593.343	186.612	-4925.063904	
29BL-65	29BL-66 ✓	202 32 22	227 24 54 ✓	38.578 ✓	-26.105	0	-28.404	0	-131489.521	-70621.747	145.971	-3810.572955	
29BL-66	29BL-67 ✓	157 7 7	204 32 1 ✓	8.894 ✓	-8.091	0	-3.693	0	-131497.612	-70625.440	113.874	-921.354534	
29BL-67	29BL-68 ✓	158 31 22	183 3 23 ✓	5.327 ✓	-5.319	0	-0.284	0	-131502.931	-70625.724	109.897	-584.542143	
29BL-68	29BL-69 ✓	133 14 37	136 18 0 ✓	17.016 ✓	-12.302	0	11.756	0	-131515.233	-70613.968	121.369	-1493.081438	
29BL-69	29BL-70 ✓	246 44 8	203 2 8 ✓	29.944 ✓	-27.556	0	-11.717	0	-131542.789	-70625.685	121.408	-3345.518848	
29BL-70	K.276 ✓	247 48 23	270 50 31 ✓	54.180 ✓	0.796	0	-54.174	0	-131541.993	-70679.859	55.517	44.191532	
K.276	K.277 ✓	91 21 55	182 12 26 ✓	34.872 ✓	-34.846	0	-1.343	0	-131576.839	-70681.202	0.000	0.000000	
TOTAL..	ソツカクスク = 39	6660	0 0	1388.895	0.001	-1 ✓	-0.001	1 ✓			ハイメンセキ = 112184.438851		
											1/2 = 56092.21		+0.00
											メンセキ = 56092.21 ✓		

*** メンセキ ケイサン (ハ"イオウキヨホウ) ***

チクメイ ... ミヤコタ"チク トチクカクセイリシ"キ"ヨウ

セリ NO... 29BL(3) ✓

NO.	NO.	ANGLE	AZIMUTH	LENGTH	DX	*	DY	*	X	Y	DMD	2A	カ-フ"メンセキ
29BL-71	29BL- ¹⁴ 74 ✓		183 3 12						-131544.888	-70369.285			
29BL-74	29BL-15 ✓	70 19 8	73 22 20 ✓	1.870 ✓	0.535	0	1.792	0	-131544.353	-70367.493	-3.036	-1.624260	
29BL-15	29BL-16 ✓	183 52 32	77 14 52 ✓	2.002 ✓	0.442	0	1.953	0	-131543.911	-70365.540	0.709	0.313378	
29BL-16	29BL-17 ✓	183 38 1	80 52 53 ✓	2.000 ✓	0.317	0	1.975	0	-131543.594	-70363.565	4.637	1.469929	
29BL-17	29BL-18 ✓	183 21 14	84 14 7 ✓	2.001 ✓	0.201	0	1.991	0	-131543.393	-70361.574	8.603	1.729203	
29BL-18	29BL-19 ✓	182 55 46	87 9 53 ✓	2.001 ✓	0.099	0	1.999	0	-131543.294	-70359.575	12.593	1.246707	
29BL-19	29BL-20 ✓	183 31 23	90 41 16 ✓	1.999 ✓	-0.024	0	1.999	0	-131543.318	-70357.576	16.591	-0.398184	
29BL-20	29BL-21 ✓	182 19 45	93 1 1 ✓	101.407 ✓	-5.337	0	101.266	0	-131548.655	-70256.310	119.856	-639.671472	
29BL-21	29BL-22 ✓	134 54 52	47 55 53 ✓	5.019 ✓	3.363	0	3.726	0	-131545.292	-70252.584	224.848	756.163824	
29BL-22	29BL-51 ✓	135 7 19	3 3 12 ✓	54.111 ✓	54.034	0	2.882	0	-131491.258	-70249.702	231.456	12506.493504	
29BL-51	29BL-73 ✓	97 15 14	280 18 26 ✓	19.332 ✓	3.459	0	-19.020	0	-131487.799	-70268.722	215.318	744.784962	
29BL-73	29BL-72 ✓	270 28 2	10 46 28 ✓	17.000 ✓	16.700	0	3.178	0	-131471.099	-70265.544	199.476	3331.249200	
29BL-72	29BL-52 ✓	269 33 32	100 20 0 ✓	17.031 ✓	-3.055	0	16.755	0	-131474.154	-70248.789	219.409	-670.294495	
29BL-52	29BL-53 ✓	82 43 12	3 3 12 ✓	13.586 ✓	13.567	0	0.724	-1	-131460.587	-70248.066	236.887	3213.845929	
29BL-53	29BL-71 ✓	90 0 0	273 3 12 ✓	116.556 ✓	6.208	1	-116.391	0	-131454.378	-70364.457	121.219	752.648771	
29BL-71	29BL- ¹⁴ 74 ✓	90 0 0	183 3 12 ✓	90.639 ✓	-90.510	0	-4.828	0	-131544.888	-70369.285	0.000	0.000000	
TOTAL..	ソツカクスウ= 15	2340	0 0	446.554	-0.001	1 ✓	0.001	-1 ✓			ハ"イメンセキ=	19997.956996	
											1/2=	.9998.97	+0.00
											メンセキ=	9998.97 ✓	

*** メンセキ ケイサン (ハイイウキヨホウ) ***

チクメイ ... ミヤコタチク トチクカクセイツシキヨウ

セイリ NO... 29BL(4) ✓

NO.	NO.	ANGLE	AZIMUTH	LENGTH	DX	*	DY	*	X	Y	DMD	2A	カ-フメンセキ
29BL-56	29BL-58 ✓		153 43 35						-131416.417	-70611.161			
29BL-58	29BL-59 ✓	89 57 33	63 41 8 ✓	10.016 ✓	4.440	0	8.978	0	-131411.977	-70602.183	11.413	50.673720	
29BL-59	29BL-55 ✓	128 34 5	12 15 13 ✓	7.022 ✓	6.862	0	1.490	0	-131405.115	-70600.693	21.881	150.147422	
29BL-55	29BL-56 ✓	51 28 22	243 43 35 ✓	14.389 ✓	-6.369	-1	-12.902	-1	-131411.485	-70613.596	10.468	-66.681160	
29BL-56	29BL-58 ✓	90 0 0	153 43 35 ✓	5.500 ✓	-4.932	0	2.435	0	-131416.417	-70611.161	0.000	0.000000	
TOTAL..	ソツカク入ウ= 4	360 0 0		36.927	0.001	-1 ✓	0.001	-1 ✓			ハイイウキヨホウ=	134.139982	
											1/2=	67.06	+0.00
											メソセキ=	67.06 ✓	

*** メンセキ ケイサン (ハイオウキヨホウ) ***

チクメイ ... ミヤコタチク トチクカクセイリシキヨウ

セイリ NO... 29BL(5) ✓

NO.	NO.	ANGLE	AZIMUTH	LENGTH	DX	*	DY	*	X	Y	DMD	2A	カ-フメンセキ
29BL-55	29BL-60 ✓		192 15 13						-131421.718	-70604.299			
29BL-60	29BL-61 ✓	90 14 5	102 29 18 ✓	16.916 ✓	-3.658	0	16.516	0	-131425.376	-70587.783	12.910	-47.224780	
29BL-61	29BL-54 ✓	90 3 26	12 32 44 ✓	30.652 ✓	29.920	0	6.658	0	-131395.456	-70581.125	36.084	1079.633280	
29BL-54	29BL-55 ✓	51 10 51	243 43 35 ✓	21.822 ✓	-9.660	1	-19.568	0	-131405.115	-70600.693	23.174	-223.837666	
29BL-55	29BL-60 ✓	128 31 38	192 15 13 ✓	16.990 ✓	-16.603	0	-3.606	0	-131421.718	-70604.299	0.000	0.000000	
TOTAL..	ソツカクスク= 4	360 0 0		86.380	-0.001	1 ✓	0.000	0 ✓			ハイメンセキ=	808.570834	
											1/2=	404.28	+0.00
											メンセキ=	404.28 ✓	

*** ムンセキ カイザン (ハ"イオウキヨホウ) ***

チクメイ ... ミヤコタ"チク トチクカクセイリシ"キ"ヨウ

セイリ NO... 29BL(6) ✓

NO.	NO.	ANGLE	AZIMUTH	LENGTH	DX	*	DY	*	X	Y	DMD	2A	カ-フ"ムンセキ
29BL-72	29BL-73 ✓		190 46 28						-131487.799	-70268.722			
29BL-73	29BL-51 ✓	89 31 58	100 18 26 ✓	19.332 ✓	-3.459	0	19.020	0	-131491.258	-70249.702	15.842	-54.797478	
29BL-51	29BL-52 ✓	82 44 46	3 3 12 ✓	17.128 ✓	17.104	0	0.912	1	-131474.154	-70248.789	35.775	611.895600	
29BL-52	29BL-72 ✓	97 16 48	280 20 0 ✓	17.031 ✓	3.055	0	-16.755	0	-131471.099	-70265.544	19.933	60.895315	
29BL-72	29BL-73 ✓	90 26 28	190 46 28 ✓	17.000 ✓	-16.700	0	-3.178	0	-131487.799	-70268.722	0.000	0.000000	
TOTAL..	ソツカクスウ= 4	360 0 0		70.491	0.000	0 ✓	-0.001	1 ✓			ハ"イムンセキ=	617.993437	
											1/2=	308.99	+0.00
											ムンセキ=	308.99 ✓	

*** ケツコウ トラハース ***

チクメイ ... ミヤコタチク トチクカクセイリシキヨウ

NO.	NO.	ANGLE *	AZIMUTH	LENGTH	DX	DY	X	Y	NO.
	31BL-18 ✓						-131544.924	-70369.405	31BL-18
31BL-18	¹⁴ 29BL-74 ✓		73 22 20 ✓	0.125 ✓	0.036	0	-131544.888	-70369.285	29BL-74
29BL-74	29BL-15 ✓	180 0 0	73 22 20 ✓	1.870 ✓	0.535	0	-131544.353	-70367.493	29BL-15
	TOTAL..	180 0 0		1.995 ✓	0.571	0 ✓	1.912	0 ✓	
	29BL-22 ✓						-131545.292	-70252.584	29BL-22
29BL-22	29BL-51 ✓		3 3 12 ✓	54.111 ✓	54.034	0	-131491.258	-70249.702	29BL-51
29BL-51	29BL-52 ✓	180 0 0	3 3 12 ✓	17.128 ✓	17.104	0	-131474.154	-70248.789	29BL-52
29BL-52	29BL-53 ✓	180 0 0	3 3 12 ✓	13.586 ✓	13.567	0	-131460.587	-70248.066	29BL-53
29BL-53	29BL-23 ✓	180 0 0	3 3 12 ✓	83.506 ✓	83.387	0	-131377.200	-70243.618	29BL-23
	TOTAL..	540 0 0		168.331 ✓	168.092	0 ✓	8.966	0 ✓	
	29BL-26 ✓						-131394.396	-70578.979	29BL-26
29BL-26	29BL-54 ✓		243 43 35 ✓	2.394 ✓	-1.060	0	-131395.456	-70581.125	29BL-54
29BL-54	29BL-55 ✓	180 0 0	243 43 35 ✓	21.822 ✓	-9.660	1	-131405.115	-70600.693	29BL-55
29BL-55	29BL-56 ✓	180 0 0	243 43 35 ✓	14.389 ✓	-6.369	-1	-131411.485	-70613.596	29BL-56
29BL-56	29BL-39 ✓	180 0 0	243 43 35 ✓	20.406 ✓	-9.033	0	-131420.518	-70631.894	29BL-39
	TOTAL..	540 0 0		59.011 ✓	-26.122	0 ✓	-52.915	0 ✓	
	29BL-55 ✓						-131405.115	-70600.693	29BL-55
29BL-55	29BL-59 ✓		192 15 13 ✓	7.022 ✓	-6.862	0	-131411.977	-70602.183	29BL-59
29BL-59	29BL-60 ✓	180 0 0	192 15 13 ✓	9.968 ✓	-9.741	0	-131421.718	-70604.299	29BL-60
	TOTAL..	180 0 0		16.990 ✓	-16.603	0 ✓	-3.606	0 ✓	