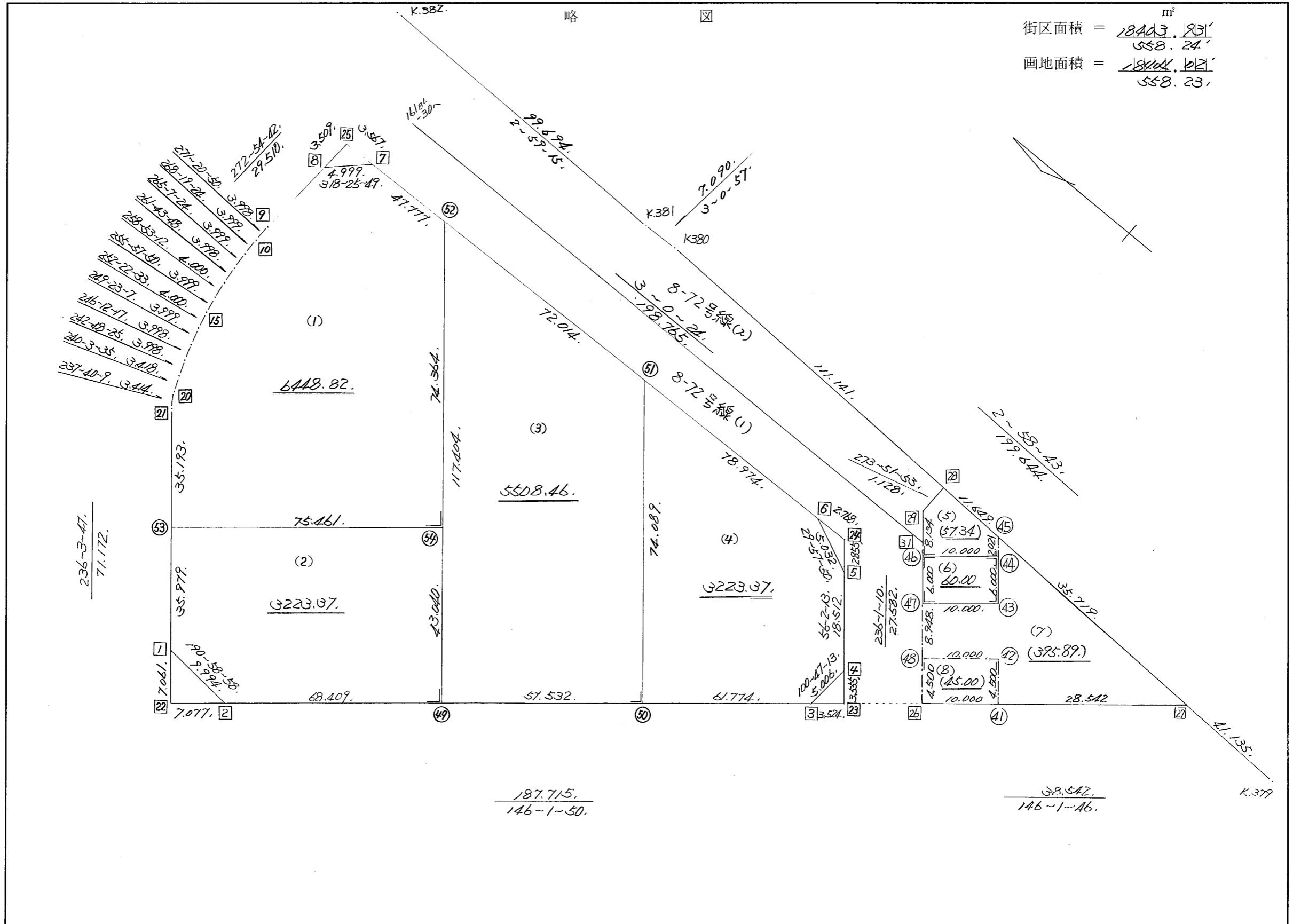


街廓原子一覽表用紙

(161 / 161 - (1)) BL



*** メンセキ ケイサン (ハイオウキヨホウ) ***

チクメイ ... ミヤコタチク トチクカクセイリシキヨウ

NO.	NO.	ANGLE	AZIMUTH	LENGTH	DX	*	DY	*	X	Y	DMD	2A	カ-フメンセキ
161BL-21	161BL- 1		236 3 47						-131745.438	-68903.738			
161BL- 1	161BL- 2	134 55 11	190 58 58	9.994	-9.811	0	-1.904	0	-131755.249	-68905.642	-60.952	598.000072	
161BL- 2	161BL- 3	135 2 52	146 1 50	187.715	-155.679	0	104.886	0	-131910.928	-68800.756	42.030	-6543.188370	
161BL- 3	161BL- 4	134 45 23	100 47 13	5.006	-0.937	0	4.918	0	-131911.865	-68795.838	151.834	-142.268458	
161BL- 4	161BL- 5	135 15 0	56 2 13	18.512	10.342	0	15.354	0	-131901.523	-68780.484	172.106	1779.920252	
161BL- 5	161BL- 6	153 55 37	29 57 50	5.032	4.359	0	2.513	0	-131897.164	-68777.971	189.973	828.092307	
161BL- 6	161BL- 7	153 2 34	3 0 24	198.765	198.491	0	10.426	0	-131698.673	-68767.545	202.912	40276.205792	
161BL- 7	161BL- 8	135 25 25	318 25 49	4.999	3.740	0	-3.317	0	-131694.933	-68770.862	210.021	785.478540	
161BL- 8	161BL- 9	134 28 53	272 54 42	29.510	1.499	0	-29.472	0	-131693.434	-68800.334	177.232	265.670768	
161BL- 9	161BL-10	178 26 8	271 20 50	3.998	0.094	0	-3.997	0	-131693.340	-68804.331	143.763	13.513722	
161BL-10	161BL-11	176 58 34	268 19 24	3.999	-0.117	0	-3.997	0	-131693.457	-68808.328	135.769	-15.884973	
161BL-11	161BL-12	176 48 0	265 7 24	3.999	-0.340	0	-3.985	0	-131693.797	-68812.313	127.787	-43.447580	
161BL-12	161BL-13	176 36 24	261 43 48	3.998	-0.575	0	-3.956	0	-131694.372	-68816.269	119.846	-68.911450	
161BL-13	161BL-14	177 9 24	258 53 12	4.000	-0.771	0	-3.925	0	-131695.143	-68820.194	111.965	-86.325015	
161BL-14	161BL-15	177 4 38	255 57 50	3.999	-0.970	0	-3.880	0	-131696.113	-68824.074	104.160	-101.035200	
161BL-15	161BL-16	176 24 43	252 22 33	4.000	-1.211	0	-3.812	0	-131697.324	-68827.886	96.468	-116.822748	
161BL-16	161BL-17	177 0 34	249 23 7	3.999	-1.408	0	-3.743	0	-131698.732	-68831.629	88.913	-125.189504	
161BL-17	161BL-18	176 49 10	246 12 17	3.998	-1.613	0	-3.658	0	-131700.345	-68835.287	81.512	-131.478856	
161BL-18	161BL-19	176 36 8	242 48 25	3.998	-1.827	0	-3.556	0	-131702.172	-68838.843	74.298	-135.742446	
161BL-19	161BL-20	177 15 10	240 3 35	3.418	-1.706	0	-2.962	0	-131703.878	-68841.805	67.780	-115.632680	
161BL-20	161BL-21	177 36 34	237 40 9	3.414	-1.826	0	-2.885	0	-131705.704	-68844.690	61.933	-113.089658	
161BL-21	161BL- 1	178 23 38	236 3 47	71.172	-39.734	0	-59.048	0	-131745.438	-68903.738	0.000	0.000000	
TOTAL...	ソツカクスク= 21	3420	0 0	577.525	0.000	0	0.000	0			ハイオウキキ=	36807.864515	
											1/2=	18403.93	+0.00
											メンセキ=	18403.93	

*** メンセキ ケイサン (ハイオウキヨホウ) ***

チクメイ ... ミヤコタチク トチクカクセイリシキヨウ

セリ NO... 161BL (7) - / ✓

NO.	NO.	ANGLE	AZIMUTH	LENGTH	DX	*	DY	*	X	Y	DMD	2A	カーブメンセキ
161BL-29	161BL-26 ✓		236 1 10						-131920.499	-68794.308			
161BL-26	161BL-27 ✓	90 0 36	146 1 46 ✓	38.542 ✓	-31.964	0	21.536	0	-131952.463	-68772.772	-1.336	42.703904	
161BL-27	161BL-28 ✓	36 56 57	2 58 43 ✓	47.368 ✓	47.304	0	2.461	0	-131905.159	-68770.311	22.661	1071.955944	
161BL-28	161BL-29 ✓	90 53 10	273 51 53 ✓	1.128 ✓	0.076	0	-1.125	0	-131905.083	-68771.436	23.997	1.823772	
161BL-29	161BL-26 ✓	142 9 17	236 1 10 ✓	27.582 ✓	-15.416	0	-22.872	0	-131920.499	-68794.308	0.000	0.000000	
TOTAL..	ソツカクスウ= 4	360 0 0		114.620	0.000	0 ✓	0.000	0 ✓			ハイメンセキ=	1116.483620	
											1/2=	558.24	+0.00
											メンセキ=	558.24 ✓	

*** メンセキ ケイサン (ハ"イウキヨホウ) ***

チクメイ ... ミヤコタチク トチクカクセイリシ"キ"ヨウ

セイリ NO... 161BL(1) //

NO.	NO.	ANGLE	AZIMUTH	LENGTH	DX	*	DY	*	X	Y	DMD	2A	カーブ"メンセキ
161BL-21	161BL-53 //		236 3 47						-131725.352	-68873.888			
161BL-53	161BL-54 //	89 58 3	146 1 50 //	75.461 //	-62.582	-1	42.164	0	-131787.935	-68831.724	12.966	-811.451178	
161BL-54	161BL-52 //	90 0 0	56 1 50 //	74.364 //	41.551	0	61.673	0	-131746.384	-68770.051	116.803	4853.281453	
161BL-52	161BL- 7 //	126 58 34	3 0 24 //	47.777 //	47.711	0	2.506	0	-131698.673	-68767.545	180.982	8634.832202	
161BL- 7	161BL- 8 //	135 25 25	318 25 49 //	4.999 //	3.740	0	-3.317	0	-131694.933	-68770.862	180.171	673.839540	
161BL- 8	161BL- 9 //	134 28 53	272 54 42 //	29.510 //	1.499	0	-29.472	0	-131693.434	-68800.334	147.382	220.925618	
161BL- 9	161BL-10 //	178 26 8	271 20 50 //	3.998 //	0.094	0	-3.997	0	-131693.340	-68804.331	113.913	10.707822	
161BL-10	161BL-11 //	176 58 34	268 19 24 //	3.999 //	-0.117	0	-3.997	0	-131693.457	-68808.328	105.919	-12.392523	
161BL-11	161BL-12 //	176 48 0	265 7 24 //	3.999 //	-0.340	0	-3.985	0	-131693.797	-68812.313	97.937	-33.298580	
161BL-12	161BL-13 //	176 36 24	261 43 48 //	3.998 //	-0.575	0	-3.956	0	-131694.372	-68816.269	89.996	-51.747700	
161BL-13	161BL-14 //	177 9 24	258 53 12 //	4.000 //	-0.771	0	-3.925	0	-131695.143	-68820.194	82.115	-63.310665	
161BL-14	161BL-15 //	177 4 38	255 57 50 //	3.999 //	-0.970	0	-3.880	0	-131696.113	-68824.074	74.310	-72.080700	
161BL-15	161BL-16 //	176 24 43	252 22 33 //	4.000 //	-1.211	0	-3.812	0	-131697.324	-68827.886	66.618	-80.674398	
161BL-16	161BL-17 //	177 0 34	249 23 7 //	3.999 //	-1.408	0	-3.743	0	-131698.732	-68831.629	59.063	-83.160704	
161BL-17	161BL-18 //	176 49 10	246 12 17 //	3.998 //	-1.613	0	-3.658	0	-131700.345	-68835.287	51.662	-83.330806	
161BL-18	161BL-19 //	176 36 8	242 48 25 //	3.998 //	-1.827	0	-3.556	0	-131702.172	-68838.843	44.448	-81.206496	
161BL-19	161BL-20 //	177 15 10	240 3 35 //	3.418 //	-1.706	0	-2.962	0	-131703.878	-68841.805	37.930	-64.708580	
161BL-20	161BL-21 //	177 36 34	237 40 9 //	3.414 //	-1.826	0	-2.885	0	-131705.704	-68844.690	32.083	-58.583558	
161BL-21	161BL-53 //	178 23 38	236 3 47 //	35.193 //	-19.648	0	-29.198	0	-131725.352	-68873.888	0.000	0.000000	
TOTAL..	ソツカク入ウ= 18	2880	0 0	314.124	0.001	-1 //	0.000	0 //			ハ"イメンセキ=	12897.640747	
											1/2=	6448.82	+0.00
											メンセキ=	6448.82 //	

*** メンセキ ケイサン (ハイイウキヨホウ) ***

チクメイ ... ミヤコタチク トチクカクセイリシキヨウ

セリ NO... 161BL(2)

NO.	NO.	ANGLE	AZIMUTH	LENGTH	DX	*	DY	*	X	Y	DMD	2A	カーブメンセキ
161BL-53	161BL- 1		236 3 47						-131745.438	-68903.738			
161BL- 1	161BL- 2	134 55 11	190 58 58	9.994	-9.811	0	-1.904	0	-131755.249	-68905.642	-31.754	311.538494	
161BL- 2	161BL-49	135 2 52	146 1 50	68.409	-56.734	0	38.224	-1	-131811.983	-68867.419	4.565	-258.990710	
161BL-49	161BL-54	90 0 0	56 1 50	43.040	24.049	-1	35.695	0	-131787.935	-68831.724	78.483	1887.359184	
161BL-54	161BL-53	90 0 0	326 1 50	75.461	62.582	1	-42.164	0	-131725.352	-68873.888	72.014	4506.852162	
161BL-53	161BL- 1	90 1 57	236 3 47	35.979	-20.086	0	-29.850	0	-131745.438	-68903.738	0.000	0.000000	
TOTAL..	ソツカクスウ= 5	540 0 0		232.883	0.000	0	0.001	-1			ハイイウキヨホウ=	6446.759130	
											1/2=	3223.37	+0.00
											メンセキ=	3223.37	

セリ NO... 161BL(3)

161BL-52	161BL-49		236 1 50						-131811.983	-68867.419			
161BL-49	161BL-50	90 0 0	146 1 50	57.532	-47.713	0	32.146	0	-131859.696	-68835.273	-65.222	3111.937286	
161BL-50	161BL-51	90 0 0	56 1 50	74.089	41.397	0	61.445	0	-131818.299	-68773.828	28.369	1174.391493	
161BL-51	161BL-52	126 58 34	3 0 24	72.014	71.915	0	3.777	0	-131746.384	-68770.051	93.591	6730.596765	
161BL-52	161BL-49	53 1 26	236 1 50	117.404	-65.600	1	-97.367	-1	-131811.983	-68867.419	0.000	0.000000	
TOTAL..	ソツカクスウ= 4	360 0 0		321.039	-0.001	1	0.001	-1			ハイイウキヨホウ=	11016.925544	
											1/2=	5508.46	+0.00
											メンセキ=	5508.46	

*** メンセキ ケイサン (ハ"イオウキヨホウ) ***

チクメイ ... ミヤコタ"チク トチクカクセイリシ"キ"ヨウ

ペリ NO... ¹⁶¹116BL(4)✓

NO.	NO.	ANGLE	AZIMUTH	LENGTH	DX	*	DY	*	X	Y	DMD	2A	カーブ"メンセキ
161BL-51	161BL-50✓		236 1 50						-131859.696	-68835.273			
161BL-50	161BL-3✓	90 0 0	146 1 50✓	61.774✓	-51.231	-1	34.516	1	-131910.928	-68800.756	-26.928	1379.575296	
161BL-3	161BL-4✓	134 45 23	100 47 13✓	5.006✓	-0.937	0	4.918	0	-131911.865	-68795.838	12.507	-11.719059	
161BL-4	161BL-5✓	135 15 0	56 2 13✓	18.512✓	10.342	0	15.354	0	-131901.523	-68780.484	32.779	339.000418	
161BL-5	161BL-6✓	153 55 37	29 57 50✓	5.032✓	4.359	0	2.513	0	-131897.164	-68777.971	50.646	220.765914	
161BL-6	161BL-51✓	153 2 34	3 0 24✓	78.974✓	78.865	0	4.142	1	-131818.299	-68773.828	57.302	4519.122230	
161BL-51	161BL-50✓	53 1 26	236 1 50✓	74.089✓	-41.397	0	-61.445	0	-131859.696	-68835.273	0.000	0.000000	
TOTAL...	ソツカク入= 6	720 0 0		243.387	0.001	-1✓	-0.002	2✓			ハ"イメンセキ=	6446.744799	
											1/2=	3223.37	+0.00
											メンセキ=	3223.37✓	

*** メンセキ ケイサン (ハ"イオウキヨホウ) ***

チクメイ ... ミヤコタ"チク トチクカクセイリシ"キ"ヨウ

(セリ NO... 161BL(5) //

NO.	NO.	ANGLE	AZIMUTH	LENGTH	DX	*	DY	*	X	Y	DMD	2A	カーブ"メンセキ
161BL-29	161BL-46 //		236 1 10						-131909.629	-68778.181			
161BL-46	161BL-44 //	90 0 0	146 1 10 //	10.000 //	-8.292	0	5.589	0	-131917.921	-68772.592	-1.156	9.585552	
161BL-44	161BL-45 //	90 0 0	56 1 10 //	2.021 //	1.130	-1	1.676	0	-131916.792	-68770.916	6.109	6.897061	
161BL-45	161BL-28 //	126 57 33	2 58 43 //	11.649 //	11.633	0	0.605	0	-131905.159	-68770.311	8.390	97.600870	
161BL-28	161BL-29 //	90 53 10	273 51 53 //	1.128 //	0.076	0	-1.125	0	-131905.083	-68771.436	7.870	0.598120	
161BL-29	161BL-46 //	142 9 17	236 1 10 //	8.134 //	-4.546	0	-6.745	0	-131909.629	-68778.181	0.000	0.000000	
TOTAL..	ソツカク入ウ= 5	540 0 0		32.932	0.001	-1 //	0.000	0 //			ハ"イメンセキ=	114.681603	
											1/2=	57.34	+0.00
											メンセキ=	57.34 //	

セリ NO... 161BL(6) //

161BL-46	161BL-47 //		236 1 10						-131912.983	-68783.157			
161BL-47	161BL-43 //	90 0 0	146 1 10 //	10.000 //	-8.292	0	5.589	0	-131921.275	-68777.568	0.613	-5.082996	
161BL-43	161BL-44 //	90 0 0	56 1 10 //	6.000 //	3.353	1	4.975	1	-131917.921	-68772.592	11.178	37.491012	
161BL-44	161BL-46 //	90 0 0	326 1 10 //	10.000 //	8.292	0	-5.589	0	-131909.629	-68778.181	10.565	87.604980	
161BL-46	161BL-47 //	90 0 0	236 1 10 //	6.000 //	-3.353	-1	-4.975	-1	-131912.983	-68783.157	0.000	0.000000	
TOTAL..	ソツカク入ウ= 4	360 0 0		32.000	0.000	0 //	0.000	0 //			ハ"イメンセキ=	120.012996	
											1/2=	60.00	+0.00
											メンセキ=	60.00 //	

*** メンセキ ケイサン (ハイオウキヨホウ) ***

チクメイ ... ミヤコタチクノチクカクセイリシキヨウ

(セリ NO... 161BL(7) //)

NO.	NO.	ANGLE	AZIMUTH	LENGTH	DX	*	DY	*	X	Y	DMD	2A	カーブメンセキ
161BL-42	161BL-41 //		236 1 10						-131928.792	-68788.720			
161BL-41	161BL-27 //	90 0 36	146 1 46 //	28.542 //	-23.671	0	15.948	0	-131952.463	-68772.772	12.216	-289.164936	
161BL-27	161BL-45 //	36 56 57	2 58 43 //	35.719 //	35.671	0	1.856	0	-131916.792	-68770.916	30.020	1070.843420	
161BL-45	161BL-43 //	53 2 27	236 1 10 //	8.021 //	-4.483	0	-6.651	-1	-131921.275	-68777.568	25.224	-113.079192	
161BL-43	161BL-47 //	270 0 0	326 1 10 //	10.000 //	8.292	0	-5.589	0	-131912.983	-68783.157	12.983	107.655036	
161BL-47	161BL-48 //	90 0 0	236 1 10 //	8.948 //	-5.001	0	-7.420	0	-131917.984	-68790.577	-0.026	0.130026	
161BL-48	161BL-42 //	90 0 0	146 1 10 //	10.000 //	-8.292	0	5.589	0	-131926.276	-68784.988	-1.857	15.398244	
161BL-42	161BL-41 //	270 0 0	236 1 10 //	4.500 //	-2.515	-1	-3.732	0	-131928.792	-68788.720	0.000	0.000000	
TOTAL..	ソツカクスウ= 7	900 0 0		105.730	0.001	-1 //	0.001	-1 //			ハイメンセキ=	791.782598	
											1/2=	395.89	+0.00
											メンセキ=	395.89 //	

(セリ NO... 161BL(8) //)

161BL-48	161BL-26 //		236 1 10						-131920.499	-68794.308			
161BL-26	161BL-41 //	90 0 36	146 1 46 //	10.000 //	-8.293	0	5.588	0	-131928.792	-68788.720	1.857	-15.400101	
161BL-41	161BL-42 //	89 59 24	56 1 10 //	4.500 //	2.515	1	3.732	0	-131926.276	-68784.988	11.177	28.121332	
161BL-42	161BL-48 //	90 0 0	326 1 10 //	10.000 //	8.292	0	-5.589	0	-131917.984	-68790.577	9.320	77.281440	
161BL-48	161BL-26 //	90 0 0	236 1 10 //	4.500 //	-2.515	0	-3.732	1	-131920.499	-68794.308	0.000	0.000000	
TOTAL..	ソツカクスウ= 4	360 0 0		29.000	-0.001	1 //	-0.001	1 //			ハイメンセキ=	90.002671	
											1/2=	45.00	+0.00
											メンセキ=	45.00 //	

チクメイ ... ミヤコタチク トチクカクセイリシキヨウ

NO.	NO.	ANGLE *	AZIMUTH	LENGTH	DX	*	DY	*	X	Y	NO.
	161BL- 2 ✓								-131755.249	-68905.642	161BL- 2
161BL- 2	161BL-49 ✓		146 1 50 ✓	68.409 ✓	-56.734	0	38.224	-1	-131811.983	-68867.419	161BL-49
161BL-49	161BL-50 ✓	180 0 0	146 1 50 ✓	57.532 ✓	-47.713	0	32.146	0	-131859.696	-68835.273	161BL- 50
161BL-50	161BL- 3 ✓	180 0 0	146 1 50 ✓	61.774 ✓	-51.231	-1	34.516	1	-131910.928	-68800.756	161BL- 3
	TOTAL..	360 0 0		187.715 ✓	-155.678	-1 ✓	104.886	0 ✓			
	161BL- 6 ✓								-131897.164	-68777.971	161BL- 6
161BL- 6	161BL-51 ✓		3 0 24 ✓	78.974 ✓	78.865	0	4.142	1	-131818.299	-68773.828	161BL-51
161BL-51	161BL-52 ✓	180 0 0	3 0 24 ✓	72.014 ✓	71.915	0	3.777	0	-131746.384	-68770.051	161BL- 52
161BL-52	161BL- 7 ✓	180 0 0	3 0 24 ✓	47.777 ✓	47.711	0	2.506	0	-131698.673	-68767.545	161BL- 7
	TOTAL..	360 0 0		198.765 ✓	198.491	0 ✓	10.425	1 ✓			
	161BL-21 ✓								-131705.704	-68844.690	161BL-21
161BL-21	161BL-53 ✓		236 3 47 ✓	35.193 ✓	-19.648	0	-29.198	0	-131725.352	-68873.888	161BL-53
161BL-53	161BL- 1 ✓	180 0 0	236 3 47 ✓	35.979 ✓	-20.086	0	-29.850	0	-131745.438	-68903.738	161BL- 1
	TOTAL..	180 0 0		71.172 ✓	-39.734	0 ✓	-59.048	0 ✓			
	161BL-49 ✓								-131811.983	-68867.419	161BL-49
161BL-49	161BL-54 ✓		56 1 50 ✓	43.040 ✓	24.049	-1	35.695	0	-131787.935	-68831.724	161BL-54
161BL-54	161BL-52 ✓	180 0 0	56 1 50 ✓	74.364 ✓	41.551	0	61.673	0	-131746.384	-68770.051	161BL- 52
	TOTAL..	180 0 0		117.404 ✓	65.600	-1 ✓	97.368	0 ✓			
	161BL-26 ✓								-131920.499	-68794.308	161BL-26
161BL-26	161BL-41 ✓		146 1 46 ✓	10.000 ✓	-8.293	0	5.588	0	-131928.792	-68788.720	161BL-41

チクメイ ... ミヤコタチク トチクカクセイリシキヨウ

NO.	NO.	ANGLE	*	AZIMUTH	LENGTH	DX	*	DY	*	X	Y	NO.
161BL-41	161BL-27 ✓	180 0 0		146 1 46 ✓	28.542 ✓	-23.671	0	15.948	0	-131952.463	-68772.772	161BL-27
	TOTAL..	180 0 0			38.542 ✓	-31.964	0 ✓	21.536	0 ✓			
	K.614 ✓									-131986.457	-68774.541	K.614
K.614	161BL-27 ✓			2 58 43 ✓	34.040 ✓	33.994	0	1.769	0	-131952.463	-68772.772	161BL-27
161BL-27	161BL-45 ✓	180 0 0		2 58 43 ✓	35.719 ✓	35.671	0	1.856	0	-131916.792	-68770.916	161BL-45
161BL-45	161BL-28 ✓	180 0 0		2 58 43 ✓	11.649 ✓	11.633	0	0.605	0	-131905.159	-68770.311	161BL-28
161BL-28	K.380 ✓	180 0 0		2 58 43 ✓	111.141 ✓	110.991	0	5.775	0	-131794.168	-68764.536	K.380
	TOTAL..	540 0 0			192.549 ✓	192.289	0 ✓	10.005	0 ✓			
	161BL-29 ✓									-131905.083	-68771.436	161BL-29
161BL-29	161BL-46 ✓			236 1 10 ✓	8.134 ✓	-4.546	0	-6.745	0	-131909.629	-68778.181	161BL-46
161BL-46	161BL-47 ✓	180 0 0		236 1 10 ✓	6.000 ✓	-3.353	-1	-4.975	-1	-131912.983	-68783.157	161BL-47
161BL-47	161BL-48 ✓	180 0 0		236 1 10 ✓	8.948 ✓	-5.001	0	-7.420	0	-131917.984	-68790.577	161BL-48
161BL-48	161BL-26 ✓	180 0 0		236 1 10 ✓	4.500 ✓	-2.515	0	-3.732	1	-131920.499	-68794.308	161BL-26
	TOTAL..	540 0 0			27.582 ✓	-15.415	-1 ✓	-22.872	0 ✓			
	161BL-45 ✓									-131916.792	-68770.916	161BL-45
161BL-45	161BL-44 ✓			236 1 10 ✓	2.021 ✓	-1.130	1	-1.676	0	-131917.921	-68772.592	161BL-44
161BL-44	161BL-43 ✓	180 0 0		236 1 10 ✓	6.000 ✓	-3.353	-1	-4.975	-1	-131921.275	-68777.568	161BL-43
	TOTAL..	180 0 0			8.021 ✓	-4.483	0 ✓	-6.651	-1 ✓			