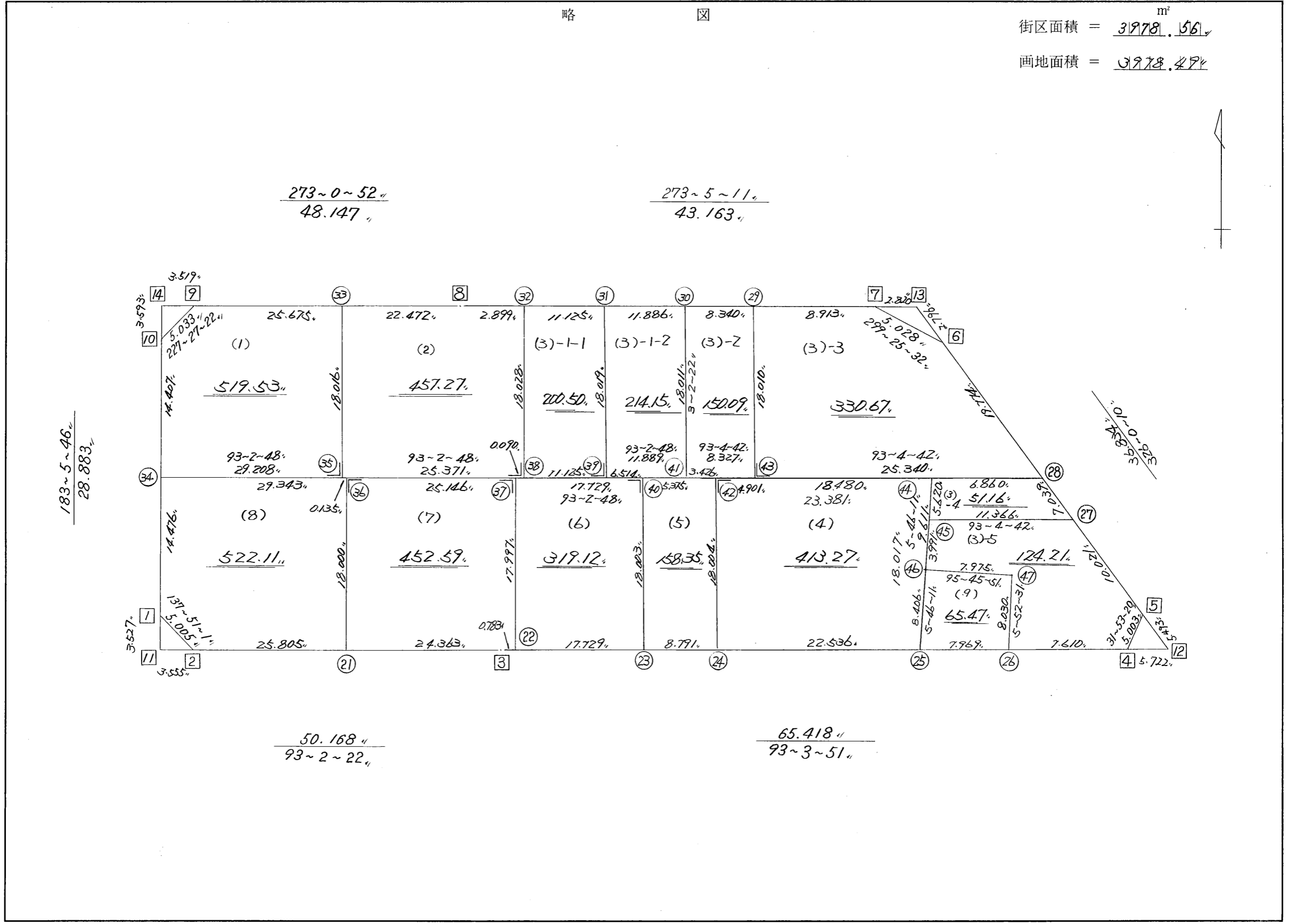


略 図

街区面積 =  $\frac{31978.561}{m^2}$   
 画地面積 =  $\frac{31978.474}{m^2}$



街区点番号 1 ~ 14 筆界点番号 21 ~ 47 画地番号 ( 1 ) ~ ( 9 )

\*\*\* メンセキ ケイサン (ハイイウキヨホウ) \*\*\*

チクメイ ... ミヤコタチク トチクカクセイリシキヨウ

NO.	NO.	ANGLE	AZIMUTH	LENGTH	DX	*	DY	*	X	Y	DMD	2A	カーブメンセキ
149BL-10	149BL- 1		183 5 46						-131596.771	-69203.561			
149BL- 1	149BL- 2	134 45 15	137 51 1	5.005	-3.711	0	3.359	0	-131600.482	-69200.202	1.799	-6.676089	
149BL- 2	149BL- 3	135 11 21	93 2 22	50.168	-2.660	0	50.097	0	-131603.142	-69150.105	55.255	-146.978300	
149BL- 3	149BL- 4	180 1 29	93 3 51	65.418	-3.497	0	65.324	0	-131606.639	-69084.781	170.676	-596.853972	
149BL- 4	149BL- 5	118 49 29	31 53 20	5.003	4.248	0	2.643	0	-131602.391	-69082.138	238.643	1013.755464	
149BL- 5	149BL- 6	114 6 50	326 0 10	36.834	30.538	0	-20.596	0	-131571.853	-69102.734	220.690	6739.431220	
149BL- 6	149BL- 7	153 25 22	299 25 32	5.028	2.470	0	-4.379	0	-131569.383	-69107.113	195.715	483.416050	
149BL- 7	149BL- 8	153 39 39	273 5 11	43.163	2.324	0	-43.100	0	-131567.059	-69150.213	148.236	344.500464	
149BL- 8	149BL- 9	179 55 41	273 0 52	48.147	2.532	0	-48.080	0	-131564.527	-69198.293	57.056	144.465792	
149BL- 9	149BL-10	134 26 30	227 27 22	5.033	-3.403	0	-3.708	0	-131567.930	-69202.001	5.268	-17.927004	
149BL-10	149BL- 1	135 38 24	183 5 46	28.883	-28.841	0	-1.560	0	-131596.771	-69203.561	0.000	0.000000	
TOTAL..	ソツカクスク= 10	1440	0 0	292.682	0.000	0	0.000	0			ハイメンセキ=	7957.133625	
											1/2=	3978.56	+0.00
											メンセキ=	3978.56	

\*\*\* メンセキ ケイサン (ハ"イオウキヨホウ) \*\*\*

チクメイ ... ミヤコタ"チク トチクカクセイリシ"キ"ヨウ

セリ NO... 149BL(1),

NO.	NO.	ANGLE	AZIMUTH	LENGTH	DX	*	DY	*	X	Y	DMD	2A	カーブ"メンセキ
149BL-10	149BL-34✓		183 5 46✓						-131582.316	-69202.779			
149BL-34	149BL-35✓	89 57 2	93 2 48✓	29.208✓	-1.552	0	29.167	0	-131583.868	-69173.612	28.389	-44.059728	
149BL-35	149BL-33✓	90 0 0	3 2 48✓	18.016✓	17.991	0	0.958	0	-131565.877	-69172.654	58.514	1052.725374	
149BL-33	149BL- 9✓	89 58 4	273 0 52✓	25.675✓	1.350	0	-25.639	0	-131564.527	-69198.293	33.833	45.674550	
149BL- 9	149BL-10✓	134 26 30	227 27 22✓	5.033✓	-3.403	0	-3.708	0	-131567.930	-69202.001	4.486	-15.265858	
149BL-10	149BL-34✓	135 38 24	183 5 46✓	14.407✓	-14.386	0	-0.778	0	-131582.316	-69202.779	0.000	0.000000	
TOTAL..	ツツカクスク= 5	540	0 0	92.339	0.000	0✓	0.000	0✓			ハ"イメンセキ=	1039.074338	
											1/2=	519.53	+0.00
											メンセキ=	519.53✓	

セリ NO... 149BL(2),

149BL-33	149BL-35✓		183 2 48✓						-131583.868	-69173.612			
149BL-35	149BL-38✓	90 0 0	93 2 48✓	25.371✓	-1.348	-1	25.335	0	-131585.217	-69148.277	24.377	-32.884573	
149BL-38	149BL-32✓	90 0 0	3 2 48✓	18.028✓	18.003	-1	0.958	1	-131567.215	-69147.318	50.671	912.179342	
149BL-32	149BL- 8✓	90 2 23	273 5 11✓	2.899✓	0.156	0	-2.895	0	-131567.059	-69150.213	48.735	7.602660	
149BL- 8	149BL-33✓	179 55 41	273 0 52✓	22.472✓	1.182	0	-22.441	0	-131565.877	-69172.654	23.399	27.657618	
149BL-33	149BL-35✓	90 1 56	183 2 48✓	18.016✓	-17.991	0	-0.958	0	-131583.868	-69173.612	0.000	0.000000	
TOTAL..	ツツカクスク= 5	540	0 0	86.786✓	0.002	-2✓	-0.001	1✓			ハ"イメンセキ=	914.555047	
											1/2=	457.27	+0.00
											メンセキ=	457.27✓	

\*\*\* メンセキ ケイサン (ハ"イオウキヨホウ) \*\*\*

チクメイ ... ミヤコタ"チク トチクカクセイリシ"キ"ヨウ

セリ NO... 149BL(3)-/-/4

NO.	NO.	ANGLE	AZIMUTH	LENGTH	DX	*	DY	*	X	Y	DMD	2A	カ-フ"メンセキ
149BL-32	149BL-38✓		183 2 48✓						-131585.217	-69148.277			
149BL-38	149BL-39✓	90 0 0	93 2 48✓	11.125✓	-0.591	0	11.109	0	-131585.808	-69137.168	10.150	-5.998650	
149BL-39	149BL-31✓	90 0 0	3 2 48✓	18.019✓	17.994	0	0.958	0	-131567.814	-69136.210	22.217	399.772698	
149BL-31	149BL-32✓	90 2 23	273 5 11✓	11.125✓	0.599	0	-11.109	1	-131567.215	-69147.318	12.067	7.228133	
149BL-32	149BL-38✓	89 57 37	183 2 48✓	18.028✓	-18.003	1	-0.958	-1	-131585.217	-69148.277	0.000	0.000000	
TOTAL..	ソツカクスク= 4	360 0 0		58.297	-0.001	1✓	0.000	0✓			ハ"イオウキキ=	401.002181	
											1/2=	200.50	+0.00
											メソキキ=	200.50✓	

セリ NO... 149BL<sup>(3)</sup>-/-2<sub>(4)</sub>

149BL-31	149BL-39✓		183 2 48✓						-131585.808	-69137.168			
149BL-39	149BL-41✓	90 0 0	93 2 48✓	11.889✓	-0.632	0	11.872	0	-131586.440	-69125.296	10.914	-6.897648	
149BL-41	149BL-30✓	89 59 34	3 2 22✓	18.011✓	17.986	0	0.955	0	-131568.454	-69124.341	23.741	427.005626	
149BL-30	149BL-31✓	90 2 49	273 5 11✓	11.886✓	0.640	0	-11.869	0	-131567.814	-69136.210	12.827	8.209280	
149BL-31	149BL-39✓	89 57 37	183 2 48✓	18.019✓	-17.994	0	-0.958	0	-131585.808	-69137.168	0.000	0.000000	
TOTAL..	ソツカクスク= 4	360 0 0		59.805✓	0.000	0✓	0.000	0✓			ハ"イオウキキ=	428.317258	
											1/2=	214.15	+0.00
											メソキキ=	214.15✓	

\*\*\* ムンセキ ケイサン (ハ"イオウキヨホウ) \*\*\*

チクメイ ... ミヤコタ"チク トチクカクセイリシ"キ"ヨウ

レイ NO... 149BL <sup>(3)-2</sup>~~(5)~~

NO.	NO.	ANGLE	AZIMUTH	LENGTH	DX	*	DY	*	X	Y	DMD	2A	カ-フ"ムンセキ
149BL-30	149BL-41✓		183 2 22✓						-131586.440	-69125.296			
149BL-41	149BL-43✓	90 2 20	93 4 42✓	8.327✓	-0.447	0	8.315	0	-131586.887	-69116.981	7.360	-3.289920	
149BL-43	149BL-29✓	90 0 0	3 4 42✓	18.010✓	17.984	0	0.967	1	-131568.903	-69116.013	16.643	299.307712	
149BL-29	149BL-30✓	90 0 29	273 5 11✓	8.340✓	0.449	0	-8.328	0	-131568.454	-69124.341	9.283	4.168067	
149BL-30	149BL-41✓	89 57 11	183 2 22✓	18.011✓	-17.986	0	-0.955	0	-131586.440	-69125.296	0.000	0.000000	
TOTAL..	ソツカクスウ= 4	360 0 0		52.688	0.000	0✓	-0.001	1✓			ハ"イムンセキ=	300.185859	
											1/2=	150.09	+0.00
											ムンセキ=	150.09✓	

レイ NO... 149BL <sup>(3)-3</sup>~~(5)~~

149BL-29	149BL-43✓		183 4 42✓						-131586.887	-69116.981			
149BL-43	149BL-28✓	90 0 0	93 4 42✓	25.340✓	-1.361	0	25.303	1	-131588.248	-69091.677	24.336	-33.121296	
149BL-28	149BL- 6✓	52 55 28	326 0 10✓	19.774✓	16.394	1	-11.057	0	-131571.853	-69102.734	38.583	632.568285	
149BL- 6	149BL- 7✓	153 25 22	299 25 32✓	5.028✓	2.470	0	-4.379	0	-131569.383	-69107.113	23.147	57.173090	
149BL- 7	149BL-29✓	153 39 39	273 5 11✓	8.913✓	0.480	0	-8.900	0	-131568.903	-69116.013	9.868	4.736640	
149BL-29	149BL-43✓	89 59 31	183 4 42✓	18.010✓	-17.984	0	-0.967	-1	-131586.887	-69116.981	0.000	0.000000	
TOTAL..	ソツカクスウ= 5	540 0 0		77.065	-0.001	1✓	0.000	0✓			ハ"イムンセキ=	661.356719	
											1/2=	330.67	+0.00
											ムンセキ=	330.67✓	

\*\*\* メンセキ ケイザン (ハイイウキヨホウ) \*\*\*

チクメイ ... ミヤコタチク トチクカクセイリシキヨウ

セリ NO... 149BL(3)-4 ✓

NO.	NO.	ANGLE	AZIMUTH	LENGTH	DX	*	DY	*	X	Y	DMD	2A	カ-フメンセキ
149BL-44	149BL-45 ✓		185 46 11						-131593.472	-69099.092			
149BL-45	149BL-27 ✓	87 18 31	93 4 42 ✓	11.366 ✓	-0.610	-1	11.350	0	-131594.083	-69087.742	10.785	-6.589635	
149BL-27	149BL-28 ✓	52 55 28	326 0 10 ✓	7.039 ✓	5.836	-1	-3.936	1	-131588.248	-69091.677	18.200	106.197000	
149BL-28	149BL-44 ✓	127 4 32	273 4 42 ✓	6.860 ✓	0.368	0	-6.850	0	-131587.880	-69098.527	7.415	2.728720	
149BL-44	149BL-45 ✓	92 41 29	185 46 11 ✓	5.620 ✓	-5.592	0	-0.565	0	-131593.472	-69099.092	0.000	0.000000	
TOTAL..	ソツカクスク= 4	360 0 0		30.885	0.002	-2 ✓	-0.001	1 ✓			ハイイウキヨホウ=	102.336085	
											1/2=	51.16	+0.00
											メンセキ=	51.16 ✓	

セリ NO... 149BL(3)-5 ✓

149BL-45	149BL-46 ✓		185 46 11						-131597.443	-69099.493			
149BL-46	149BL-47 ✓	89 59 40	95 45 51 ✓	7.975 ✓	-0.801	0	7.935	0	-131598.244	-69091.558	7.534	-6.034734	
149BL-47	149BL-26 ✓	270 6 40	185 52 31 ✓	8.030 ✓	-7.988	0	-0.822	0	-131606.232	-69092.380	14.647	-117.000236	
149BL-26	149BL- 4 ✓	87 11 20	93 3 51 ✓	7.610 ✓	-0.407	0	7.599	0	-131606.639	-69084.781	21.424	-8.719568	
149BL- 4	149BL- 5 ✓	118 49 29	31 53 20 ✓	5.003 ✓	4.248	0	2.643	0	-131602.391	-69082.138	31.666	134.517168	
149BL- 5	149BL-27 ✓	114 6 50	326 0 10 ✓	10.021 ✓	8.308	0	-5.603	-1	-131594.083	-69087.742	28.705	238.481140	
149BL-27	149BL-45 ✓	127 4 32	273 4 42 ✓	11.366 ✓	0.610	1	-11.350	0	-131593.472	-69099.092	11.751	7.179861	
149BL-45	149BL-46 ✓	92 41 29	185 46 11 ✓	3.991 ✓	-3.971	0	-0.401	0	-131597.443	-69099.493	0.000	0.000000	
TOTAL..	ソツカクスク= 7	900 0 0		53.996	-0.001	1 ✓	0.001	-1 ✓			ハイイウキヨホウ=	248.423631	
											1/2=	124.21	+0.00
											メンセキ=	124.21 ✓	

\*\*\* ムセキ ケイサン (ハ"イオウキヨホウ) \*\*\*

チクメイ ... ミヤコタ"チク トチクカクセイリシ"キ"ヨウ

セリ NO... 149BL(4)✓

NO.	NO.	ANGLE	AZIMUTH	LENGTH	DX	*	DY	*	X	Y	DMD	2A	カ-フ"ムセキ
149BL-42	149BL-24✓		183 4 42						-131604.602	-69122.842			
149BL-24	149BL-25✓	89 59 9	93 3 51✓	22.536✓	-1.205	1	22.504	0	-131605.806	-69100.338	21.537	-25.930548	
149BL-25	149BL-44✓	92 42 20	5 46 11✓	18.017✓	17.926	0	1.811	0	-131587.880	-69098.527	45.852	821.942952	
149BL-44	149BL-42✓	87 18 31	273 4 42✓	23.381✓	1.256	0	-23.347	-1	-131586.624	-69121.875	24.315	30.539640	
149BL-42	149BL-24✓	90 0 0	183 4 42✓	18.004✓	-17.978	0	-0.967	0	-131604.602	-69122.842	0.000	0.000000	
TOTAL..	ソツカクスウ= 4	360 0 0		81.938	-0.001	1✓	0.001	-1✓			ハ"イムセキ=	826.552044	
											1/2=	413.27	+0.00
											ムセキ=	413.27✓	

セリ NO... 149BL(5)✓

149BL-40	149BL-23✓		183 2 48						-131604.132	-69131.620			
149BL-23	149BL-24✓	90 1 3	93 3 51✓	8.791✓	-0.470	0	8.778	0	-131604.602	-69122.842	7.821	-3.675870	
149BL-24	149BL-42✓	90 0 51	3 4 42✓	18.004✓	17.978	0	0.967	0	-131586.624	-69121.875	17.566	315.801548	
149BL-42	149BL-41✓	90 0 0	273 4 42✓	3.426✓	0.184	0	-3.421	0	-131586.440	-69125.296	15.112	2.780608	
149BL-41	149BL-40✓	179 58 6	273 2 48✓	5.375✓	0.286	0	-5.367	0	-131586.154	-69130.663	6.324	1.808664	
149BL-40	149BL-23✓	90 0 0	183 2 48✓	18.003✓	-17.978	0	-0.957	0	-131604.132	-69131.620	0.000	0.000000	
TOTAL..	ソツカクスウ= 5	540 0 0		53.599	0.000	0✓	0.000	0✓			ハ"イムセキ=	316.714950	
											1/2=	158.35	+0.00
											ムセキ=	158.35✓	

\*\*\* メンセキ ケイザン (ハ"イオウキヨホウ) \*\*\*

チクメイ ... ミヤコタ"チク トチクカクセイリシ"キ"ヨウ

セリ NO... 149BL(6) ✓

NO.	INO.	ANGLE	AZIMUTH	LENGTH	DX	*	DY	*	X	Y	DMD	2A	カーブ"メンセキ
149BL-37	149BL-22 ✓		183 2 48						-131603.184	-69149.323			
149BL-22	149BL-23 ✓	90 1 3	93 3 51 ✓	17.729 ✓	-0.948	0	17.704	-1	-131604.132	-69131.620	16.747	-15.876156	
149BL-23	149BL-40 ✓	89 58 57	3 2 48 ✓	18.003 ✓	17.978	0	0.957	0	-131586.154	-69130.663	35.407	636.547046	
149BL-40	149BL-37 ✓	90 0 0	273 2 48 ✓	17.729 ✓	0.942	0	-17.704	0	-131585.212	-69148.367	18.660	17.577720	
149BL-37	149BL-22 ✓	90 0 0	183 2 48 ✓	17.997 ✓	-17.972	0	-0.957	1	-131603.184	-69149.323	0.000	0.000000	
TOTAL..	ソツカクスウ= 4	360 0 0		71.458	0.000	0 ✓	0.000	0 ✓			ハ"イメ"セキ=	638.248610	
											1/2=	319.12	+0.00
											メ"セキ=	319.12 ✓	

セリ NO... 149BL(7) ✓

149BL-36	149BL-21 ✓		183 2 48						-131601.850	-69174.434			
149BL-21	149BL- 3 ✓	89 59 34	93 2 22 ✓	24.363 ✓	-1.292	0	24.329	0	-131603.142	-69150.105	23.372	-30.196624	
149BL- 3	149BL-22 ✓	180 1 29	93 3 51 ✓	0.783 ✓	-0.042	0	0.782	0	-131603.184	-69149.323	48.483	-2.036286	
149BL-22	149BL-37 ✓	89 58 57	3 2 48 ✓	17.997 ✓	17.972	0	0.957	-1	-131585.212	-69148.367	50.221	902.571812	
149BL-37	149BL-36 ✓	90 0 0	273 2 48 ✓	25.146 ✓	1.336	1	-25.110	0	-131583.875	-69173.477	26.067	34.851579	
149BL-36	149BL-21 ✓	90 0 0	183 2 48 ✓	18.000 ✓	-17.975	0	-0.957	0	-131601.850	-69174.434	0.000	0.000000	
TOTAL..	ソツカクスウ= 5	540 0 0		86.289	-0.001	1 ✓	0.001	-1 ✓			ハ"イメ"セキ=	905.190481	
											1/2=	452.59	+0.00
											メ"セキ=	452.59 ✓	



\*\*\* メンセキ ケイサン (ハイオウキヨホウ) \*\*\*

チクメイ ... ミヤコタチク トチクカクセイリシキヨウ

セリ NO... 149BL(8) ✓

NO.	NO.	ANGLE	AZIMUTH	LENGTH	DX	*	DY	*	X	Y	DMD	2A	カ-フ、メンセキ
149BL-34	149BL-1 ✓		183 5 46						-131596.771	-69203.561			
149BL-1	149BL-2 ✓	134 45 15	137 51 1 ✓	5.005 ✓	-3.711	0	3.359	0	-131600.482	-69200.202	2.577	-9.563247	
149BL-2	149BL-21 ✓	135 11 21	93 2 22 ✓	25.805 ✓	-1.368	0	25.769	-1	-131601.850	-69174.434	31.704	-43.371072	
149BL-21	149BL-36 ✓	90 0 26	3 2 48 ✓	18.000 ✓	17.975	0	0.957	0	-131583.875	-69173.477	58.429	1050.261275	
149BL-36	149BL-34 ✓	90 0 0	273 2 48 ✓	29.343 ✓	1.560	-1	-29.302	0	-131582.316	-69202.779	30.084	46.900956	
149BL-34	149BL-1 ✓	90 2 58	183 5 46 ✓	14.476 ✓	-14.455	0	-0.782	0	-131596.771	-69203.561	0.000	0.000000	
TOTAL..	ソツカクスウ= 5	540 0 0		92.629	0.001	-1 ✓	0.001	-1 ✓			ハイメンセキ=	1044.227912	
											1/2=	522.11	+0.00
											メンセキ=	522.11 ✓	

セリ NO... 149BL(9) ✓

149BL-46	149BL-25 ✓		185 46 11						-131605.806	-69100.338			
149BL-25	149BL-26 ✓	87 17 40	93 3 51 ✓	7.969 ✓	-0.426	0	7.958	0	-131606.232	-69092.380	7.113	-3.030138	
149BL-26	149BL-47 ✓	92 48 40	5 52 31 ✓	8.030 ✓	7.988	0	0.822	0	-131598.244	-69091.558	15.893	126.953284	
149BL-47	149BL-46 ✓	89 53 20	275 45 51 ✓	7.975 ✓	0.801	0	-7.935	0	-131597.443	-69099.493	8.780	7.032780	
149BL-46	149BL-25 ✓	90 0 20	185 46 11 ✓	8.406 ✓	-8.363	0	-0.845	0	-131605.806	-69100.338	0.000	0.000000	
TOTAL..	ソツカクスウ= 4	360 0 0		32.380	0.000	0 ✓	0.000	0 ✓			ハイメンセキ=	130.955926	
											1/2=	65.47	+0.00
											メンセキ=	65.47 ✓	

チクメイ ... ミヤコタチク トチクカクヒリシキヨウ

NO.	NO.	ANGLE *	AZIMUTH	LENGTH	DX	* DY	* X	Y	NO.
	149BL- 2 ✓						-131600.482	-69200.202	149BL- 2
149BL- 2	149BL-21 ✓		93 2 22 ✓	25.805 ✓	-1.368	0 25.769	-1 -131601.850	-69174.434	149BL-21
149BL-21	149BL- 3 ✓	180 0 0	93 2 22 ✓	24.363 ✓	-1.292	0 24.329	0 -131603.142	-69150.105	149BL- 3
	TOTAL..	180 0 0		50.168 ✓	-2.660	0 ✓ 50.098	-1 ✓		
	149BL- 3 ✓						-131603.142	-69150.105	149BL- 3
149BL- 3	149BL-22 ✓		93 3 51 ✓	0.783 ✓	-0.042	0 0.782	0 -131603.184	-69149.323	149BL-22
149BL-22	149BL-23 ✓	180 0 0	93 3 51 ✓	17.729 ✓	-0.948	0 17.704	-1 -131604.132	-69131.620	149BL-23
149BL-23	149BL-24 ✓	180 0 0	93 3 51 ✓	8.791 ✓	-0.470	0 8.778	0 -131604.602	-69122.842	149BL-24
149BL-24	149BL-25 ✓	180 0 0	93 3 51 ✓	22.536 ✓	-1.205	1 22.504	0 -131605.806	-69100.338	149BL-25
149BL-25	149BL-26 ✓	180 0 0	93 3 51 ✓	7.969 ✓	-0.426	0 7.958	0 -131606.232	-69092.380	149BL-26
149BL-26	149BL- 4 ✓	180 0 0	93 3 51 ✓	7.610 ✓	-0.407	0 7.599	0 -131606.639	-69084.781	149BL- 4
	TOTAL..	900 0 0		65.418 ✓	-3.498	1 ✓ 65.325	-1 ✓		
	149BL- 5 ✓						-131602.391	-69082.138	149BL- 5
149BL- 5	149BL-27 ✓		326 0 10 ✓	10.021 ✓	8.308	0 -5.603	-1 -131594.083	-69087.742	149BL-27
149BL-27	149BL-28 ✓	180 0 0	326 0 10 ✓	7.039 ✓	5.836	-1 -3.936	1 -131588.248	-69091.677	149BL-28
149BL-28	149BL- 6 ✓	180 0 0	326 0 10 ✓	19.774 ✓	16.394	1 -11.057	0 -131571.853	-69102.734	149BL- 6
	TOTAL..	360 0 0		36.834 ✓	30.538	0 ✓ -20.596	0 ✓		
	149BL- 7 ✓						-131569.383	-69107.113	149BL- 7
149BL- 7	149BL-29 ✓		273 5 11 ✓	8.913 ✓	0.480	0 -8.900	0 -131568.903	-69116.013	149BL-29
149BL-29	149BL-30 ✓	180 0 0	273 5 11 ✓	8.340 ✓	0.449	0 -8.328	0 -131568.454	-69124.341	149BL-30
149BL-30	149BL-31 ✓	180 0 0	273 5 11 ✓	11.886 ✓	0.640	0 -11.869	0 -131567.814	-69136.210	149BL-31

チクメイ ... ミヤコタチク トチクカクセイリシキヨウ

NO.	NO.	ANGLE *	AZIMUTH	LENGTH	DX	*	DY	*	X	Y	NO.
149BL-31	149BL-32 ✓	180 0 0	273 5 11 ✓	11.125 ✓	0.599	0	-11.109	1	-131567.215	-69147.318	149BL-32
149BL-32	149BL- 8 ✓	180 0 0	273 5 11 ✓	2.899 ✓	0.156	0	-2.895	0	-131567.059	-69150.213	149BL- 8
	TOTAL..	720 0 0		43.163 ✓	2.324	0 ✓	-43.101	1 ✓			
	149BL- 8 ✓								-131567.059	-69150.213	149BL- 8
149BL- 8	149BL-33 ✓		273 0 52 ✓	22.472 ✓	1.182	0	-22.441	0	-131565.877	-69172.654	149BL-33
149BL-33	149BL- 9 ✓	180 0 0	273 0 52 ✓	25.675 ✓	1.350	0	-25.639	0	-131564.527	-69198.293	149BL- 9
	TOTAL..	180 0 0		48.147 ✓	2.532	0 ✓	-48.080	0 ✓			
	149BL-10 ✓								-131567.930	-69202.001	149BL-10
149BL-10	149BL-34 ✓		183 5 46 ✓	14.407 ✓	-14.386	0	-0.778	0	-131582.316	-69202.779	149BL-34
149BL-34	149BL- 1 ✓	180 0 0	183 5 46 ✓	14.476 ✓	-14.455	0	-0.782	0	-131596.771	-69203.561	149BL- 1
	TOTAL..	180 0 0		28.883 ✓	-28.841	0 ✓	-1.560	0 ✓			
	149BL-34 ✓								-131582.316	-69202.779	149BL-34
149BL-34	149BL-35 ✓		93 2 48 ✓	29.208 ✓	-1.552	0	29.167	0	-131583.868	-69173.612	149BL-35
149BL-35	149BL-38 ✓	180 0 0	93 2 48 ✓	25.371 ✓	-1.348	-1	25.335	0	-131585.217	-69148.277	149BL-38
149BL-38	149BL-39 ✓	180 0 0	93 2 48 ✓	11.125 ✓	-0.591	0	11.109	0	-131585.808	-69137.168	149BL-39
149BL-39	149BL-41 ✓	180 0 0	93 2 48 ✓	11.889 ✓	-0.632	0	11.872	0	-131586.440	-69125.296	149BL-41
	TOTAL..	540 0 0		77.593 ✓	-4.123	-1 ✓	77.483	0 ✓			
	149BL-34 ✓								-131582.316	-69202.779	149BL-34
149BL-34	149BL-36 ✓		93 2 48 ✓	29.343 ✓	-1.560	1	29.302	0	-131583.875	-69173.477	149BL-36
149BL-36	149BL-37 ✓	180 0 0	93 2 48 ✓	25.146 ✓	-1.336	-1	25.110	0	-131585.212	-69148.367	149BL-37

チクメイ ... ミヤコタチク トチクカクセイリシキヨウ

NO.	NO.	ANGLE *	AZIMUTH	LENGTH	DX	*	DY	*	X	Y	NO.
149BL-37	149BL-40 ✓	180 0 0	93 2 48 ✓	17.729 ✓	-0.942	0	17.704	0	-131586.154	-69130.663	149BL-40
149BL-40	149BL-41 ✓	180 0 0	93 2 48 ✓	5.375 ✓	-0.286	0	5.367	0	-131586.440	-69125.296	149BL-41
	TOTAL..	540 0 0		77.593 ✓	-4.124	0 ✓	77.483	0 ✓			
	149BL-34 ✓								-131582.316	-69202.779	149BL-34
149BL-34	149BL-35 ✓		93 2 48 ✓	29.208 ✓	-1.552	0	29.167	0	-131583.868	-69173.612	149BL-35
149BL-35	149BL-36 ✓	180 0 0	93 2 48 ✓	0.135 ✓	-0.007	0	0.135	0	-131583.875	-69173.477	149BL-36
149BL-36	149BL-37 ✓	180 0 0	93 2 48 ✓	25.146 ✓	-1.336	-1	25.110	0	-131585.212	-69148.367	149BL-37
149BL-37	149BL-38 ✓	180 0 0	93 2 48 ✓	0.090 ✓	-0.005	0	0.090	0	-131585.217	-69148.277	149BL-38
149BL-38	149BL-39 ✓	180 0 0	93 2 48 ✓	11.125 ✓	-0.591	0	11.109	0	-131585.808	-69137.168	149BL-39
149BL-39	149BL-40 ✓	180 0 0	93 2 48 ✓	6.514 ✓	-0.346	0	6.505	0	-131586.154	-69130.663	149BL-40
149BL-40	149BL-41 ✓	180 0 0	93 2 48 ✓	5.375 ✓	-0.286	0	5.367	0	-131586.440	-69125.296	149BL-41
	TOTAL..	1080 0 0		77.593 ✓	-4.123	-1 ✓	77.483	0 ✓			

チクメイ ... ミヤコタチク トチクカクセイリシキヨウ

NO.	NO.	ANGLE *	AZIMUTH	LENGTH	DX	*	DY	*	X	Y	NO.
	149BL-41 ✓								-131586.440	-69125.296	149BL-41
149BL-41	149BL-43 ✓		93 4 42 ✓	8.327 ✓	-0.447	0	8.315	0	-131586.887	-69116.981	149BL-43
149BL-43	149BL-28 ✓	180 0 0	93 4 42 ✓	25.340 ✓	-1.361	0	25.303	1	-131588.248	-69091.677	149BL-28
	TOTAL...	180 0 0		33.667 ✓	-1.808	0 ✓	33.618	1 ✓			
	149BL-41 ✓								-131586.440	-69125.296	149BL-41
149BL-41	149BL-42 ✓		93 4 42 ✓	3.426 ✓	-0.184	0	3.421	0	-131586.624	-69121.875	149BL-42
149BL-42	149BL-44 ✓	180 0 0	93 4 42 ✓	23.381 ✓	-1.256	0	23.347	1	-131587.880	-69098.527	149BL-44
149BL-44	149BL-28 ✓	180 0 0	93 4 42 ✓	6.860 ✓	-0.368	0	6.850	0	-131588.248	-69091.677	149BL-28
	TOTAL..	360 0 0		33.667 ✓	-1.808	0 ✓	33.618	1 ✓			
	149BL-41 ✓								-131586.440	-69125.296	149BL-41
149BL-41	149BL-42 ✓		93 4 42 ✓	3.426 ✓	-0.184	0	3.421	0	-131586.624	-69121.875	149BL-42
149BL-42	149BL-43 ✓	180 0 0	93 4 42 ✓	4.901 ✓	-0.263	0	4.894	0	-131586.887	-69116.981	149BL-43
149BL-43	149BL-44 ✓	180 0 0	93 4 42 ✓	18.480 ✓	-0.992	-1	18.453	1	-131587.880	-69098.527	149BL-44
149BL-44	149BL-28 ✓	180 0 0	93 4 42 ✓	6.860 ✓	-0.368	0	6.850	0	-131588.248	-69091.677	149BL-28
	TOTAL..	540 0 0		33.667 ✓	-1.807	-1 ✓	33.618	1 ✓			

カリ 1°-30'' 1

\*\*\* ケツコウ トラバース \*\*\*

チクメイ ... ミヤコタチク トチクカクセイリシキヨウ

NO.	NO.	ANGLE *	AZIMUTH	LENGTH	DX	*	DY	*	X	Y	NO.
	149BL-25 ✓								-131605.806	-69100.338	149BL-25
149BL-25	149BL-46 ✓		5 46 11 ✓	8.406 ✓	8.363	0	0.845	0	-131597.443	-69099.493	149BL-46
149BL-46	149BL-45 ✓	180 0 0	5 46 11 ✓	3.991 ✓	3.971	0	0.401	0	-131593.472	-69099.092	149BL-45
149BL-45	149BL-44 ✓	180 0 0	5 46 11 ✓	5.620 ✓	5.592	0	0.565	0	-131587.880	-69098.527	149BL-44
	TOTAL...	360 0 0		18.017 ✓	17.926	0 ✓	1.811	0 ✓			