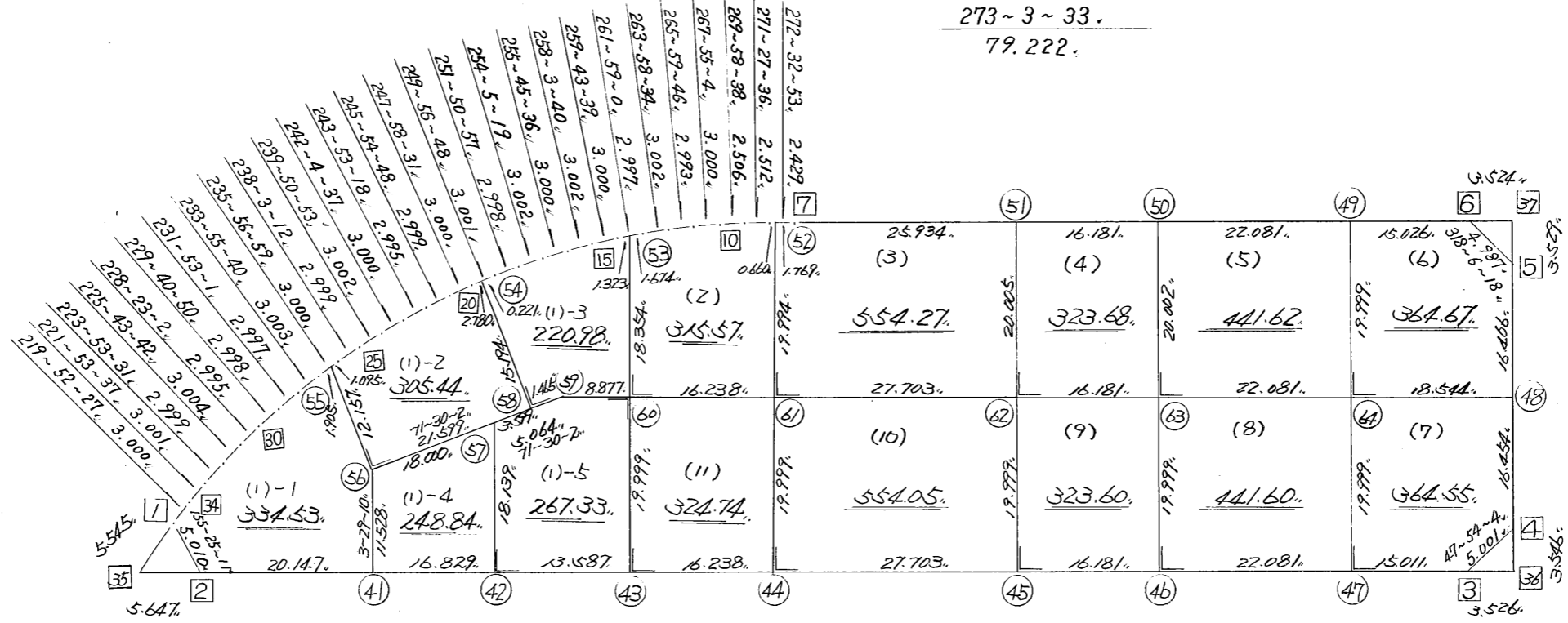


略 図

街区面積 = 5385.51 m^2
 画地面積 = 5385.47



街区点番号 1 ~ 37, 筆界点番号 41 ~ 64, 画地番号 (/) ~ (//),

*** メンセキ ケイサン (ハイオウキヨホウ) ***

チクメイ ... ミヤコタチク トチクカクセイリシキヨウ

NO.	NO.	ANGLE	AZIMUTH	LENGTH	DX	*	DY	*	X	Y	DMD	2A	カ-フメンセキ
140BL-34	140BL- 1✓		219 52 27						-131395.755	-69576.016			
140BL- 1	140BL- 2✓	115 32 44	155 25 11✓	5.010✓	-4.556	0	2.084	0	-131400.311	-69573.932	0.161	-0.733516	
140BL- 2	140BL- 3✓	117 37 48	93 2 59✓	147.777✓	-7.862	0	147.568	0	-131408.173	-69426.364	149.813	-1177.829806	
140BL- 3	140BL- 4✓	134 51 5	47 54 4✓	5.001✓	3.353	0	3.711	0	-131404.820	-69422.653	301.092	1009.561476	
140BL- 4	140BL- 5✓	135 10 1	3 4 5✓	32.920✓	32.873	0	1.762	0	-131371.947	-69420.891	306.565	10077.711245	
140BL- 5	140BL- 6✓	135 2 13	318 6 18✓	4.987✓	3.712	0	-3.330	0	-131368.235	-69424.221	304.997	1132.148864	
140BL- 6	140BL- 7✓	134 57 15	273 3 33✓	79.222✓	4.228	0	-79.109	0	-131364.007	-69503.330	222.558	940.975224	
140BL- 7	140BL- 8✓	179 29 20	272 32 53✓	2.429✓	0.108	0	-2.427	0	-131363.899	-69505.757	141.022	15.230376	
140BL- 8	140BL- 9✓	178 54 43	271 27 36✓	2.512✓	0.064	0	-2.511	0	-131363.835	-69508.268	136.084	8.709376	
140BL- 9	140BL-10✓	178 31 2	269 58 38✓	2.506✓	-0.001	0	-2.506	0	-131363.836	-69510.774	131.067	-0.131067	
140BL-10	140BL-11✓	177 56 26	267 55 4✓	3.000✓	-0.109	0	-2.998	0	-131363.945	-69513.772	125.563	-13.686367	
140BL-11	140BL-12✓	178 4 42	265 59 46✓	2.993✓	-0.209	0	-2.986	0	-131364.154	-69516.758	119.579	-24.992011	
140BL-12	140BL-13✓	177 58 48	263 58 34✓	3.002✓	-0.315	0	-2.985	0	-131364.469	-69519.743	113.608	-35.786520	
140BL-13	140BL-14✓	178 0 26	261 59 0✓	2.997✓	-0.418	0	-2.968	0	-131364.887	-69522.711	107.655	-44.999790	
140BL-14	140BL-15✓	177 44 39	259 43 39✓	3.000✓	-0.535	0	-2.952	0	-131365.422	-69525.663	101.735	-54.428225	
140BL-15	140BL-16✓	178 20 1	258 3 40✓	3.002✓	-0.621	0	-2.937	0	-131366.043	-69528.600	95.846	-59.520366	
140BL-16	140BL-17✓	177 41 56	255 45 36✓	3.000✓	-0.738	0	-2.908	0	-131366.781	-69531.508	90.001	-66.420738	
140BL-17	140BL-18✓	178 19 43	254 5 19✓	3.002✓	-0.823	0	-2.887	0	-131367.604	-69534.395	84.206	-69.301538	
140BL-18	140BL-19✓	177 45 38	251 50 57✓	2.998✓	-0.934	0	-2.849	0	-131368.538	-69537.244	78.470	-73.290980	
140BL-19	140BL-20✓	178 5 51	249 56 48✓	3.001✓	-1.029	0	-2.819	0	-131369.567	-69540.063	72.802	-74.913258	
140BL-20	140BL-21✓	178 1 43	247 58 31✓	3.000✓	-1.125	0	-2.781	0	-131370.692	-69542.844	67.202	-75.602250	
140BL-21	140BL-22✓	177 56 17	245 54 48✓	2.999✓	-1.224	0	-2.738	0	-131371.916	-69545.582	61.683	-75.499992	
140BL-22	140BL-23✓	177 58 30	243 53 18✓	2.995✓	-1.318	0	-2.689	0	-131373.234	-69548.271	56.256	-74.145408	
140BL-23	140BL-24✓	178 11 19	242 4 37✓	3.000✓	-1.405	0	-2.651	0	-131374.639	-69550.922	50.916	-71.536980	

*** メンセキ ケイサン (ハイイオウキヨホウ) ***

チクメイ ... ミヤコタチク トチクカクセイリシキヨウ

セイリ NO... 140BL

NO.	NO.	ANGLE	AZIMUTH	LENGTH	DX	*	DY	*	X	Y	DMD	2A	カ-フメンセキ
140BL-24	140BL-25	177 46 16	239 50 53	3.002	-1.508	0	-2.596	0	-131376.147	-69553.518	45.669	-68.868852	
140BL-25	140BL-26	178 12 19	238 3 12	2.999	-1.587	0	-2.545	0	-131377.734	-69556.063	40.528	-64.317936	
140BL-26	140BL-27	177 53 47	235 56 59	3.000	-1.680	0	-2.486	0	-131379.414	-69558.549	35.497	-59.634960	
140BL-27	140BL-28	177 58 41	233 55 40	3.003	-1.768	0	-2.427	0	-131381.182	-69560.976	30.584	-54.072512	
140BL-28	140BL-29	177 57 21	231 53 1	2.997	-1.850	0	-2.358	0	-131383.032	-69563.334	25.799	-47.728150	
140BL-29	140BL-30	177 47 49	229 40 50	2.998	-1.940	0	-2.286	0	-131384.972	-69565.620	21.155	-41.040700	
140BL-30	140BL-31	178 42 12	228 23 2	2.995	-1.989	0	-2.239	0	-131386.961	-69567.859	16.630	-33.077070	
140BL-31	140BL-32	177 20 40	225 43 42	3.004	-2.097	0	-2.151	0	-131389.058	-69570.010	12.240	-25.667280	
140BL-32	140BL-33	178 9 49	223 53 31	2.999	-2.161	0	-2.079	0	-131391.219	-69572.089	8.010	-17.309610	
140BL-33	140BL-34	178 0 6	221 53 37	3.001	-2.234	0	-2.004	0	-131393.453	-69574.093	3.927	-8.772918	
140BL-34	140BL-1	177 58 50	219 52 27	3.000	-2.302	0	-1.923	0	-131395.755	-69576.016	0.000	0.000000	
TOTAL..	ソツカクスウ= 34	5760	0 0	357.351	0.000	0	0.000	0			ハイイメンセキ=	10771.027761	
											1/2=	5385.51	+0.00
											メンセキ=	5385.51	

*** メンセキ ケイサン (ハイオウキヨホウ) ***

チクメイ ... ミヤコタチク トチクカクセイリシキヨウ

セイリ NO ... 140BL(1)-1

NO.	NO.	ANGLE	AZIMUTH	LENGTH	DX	*	DY	*	X	Y	DMD	2A	カーブメンセキ
140BL-34	140BL-1✓		219 52 27						-131395.755	-69576.016			
140BL-1	140BL-2✓	115 32 44	155 25 11✓	5.010✓	-4.556	0	2.084	0	-131400.311	-69573.932	0.161	-0.733516	
140BL-2	140BL-41✓	117 37 48	93 2 59✓	20.147✓	-1.072	0	20.118	0	-131401.383	-69553.814	22.363	-23.973136	
140BL-41	140BL-56✓	90 26 11	3 29 10✓	11.528✓	11.507	0	0.701	0	-131389.876	-69553.113	43.182	496.895274	
140BL-56	140BL-55✓	158 0 52	341 30 2✓	12.157✓	11.529	0	-3.857	0	-131378.347	-69556.970	40.026	461.459754	
140BL-55	140BL-27✓	74 26 57	235 56 59✓	1.905✓	-1.067	0	-1.578	-1	-131379.414	-69558.549	34.590	-36.907530	
140BL-27	140BL-28✓	177 58 41	233 55 40✓	3.003✓	-1.768	0	-2.427	0	-131381.182	-69560.976	30.584	-54.072512	
140BL-28	140BL-29✓	177 57 21	231 53 1✓	2.997✓	-1.850	0	-2.358	0	-131383.032	-69563.334	25.799	-47.728150	
140BL-29	140BL-30✓	177 47 49	229 40 50✓	2.998✓	-1.940	0	-2.286	0	-131384.972	-69565.620	21.155	-41.040700	
140BL-30	140BL-31✓	178 42 12	228 23 2✓	2.995✓	-1.989	0	-2.239	0	-131386.961	-69567.859	16.630	-33.077070	
140BL-31	140BL-32✓	177 20 40	225 43 42✓	3.004✓	-2.097	0	-2.151	0	-131389.058	-69570.010	12.240	-25.667280	
140BL-32	140BL-33✓	178 9 49	223 53 31✓	2.999✓	-2.161	0	-2.079	0	-131391.219	-69572.089	8.010	-17.309610	
140BL-33	140BL-34✓	178 0 6	221 53 37✓	3.001✓	-2.234	0	-2.004	0	-131393.453	-69574.093	3.927	-8.772918	
140BL-34	140BL-1✓	177 58 50	219 52 27✓	3.000✓	-2.302	0	-1.923	0	-131395.755	-69576.016	0.000	0.000000	
TOTAL..	ツツカクスウ= 13	1.980	0 0	74.744	0.000	0✓	0.001	-1✓			ハイメンセキ=	669.072606	
											1/2=	334.53	+0.00
											メンセキ=	334.53✓	

*** メンベキ ケイサン (ハイイオウキヨホウ) ***

チクメイ ... ミヤコタチク トチクカクセイリシキヨウ

レイリ NO... 140BL ^{(1)-2%}
₍₂₎

NO.	NO.	ANGLE	AZIMUTH	LENGTH	DX	*	DY	*	X	Y	DMD	2A	カ-フメンベキ
140BL-55	140BL-56✓		161 30 2						-131389.876	-69553.113			
140BL-56	140BL-58✓	90 0 0	71 30 2✓	21.599✓	6.853	0	20.483	0	-131383.023	-69532.630	24.340	166.802020	
140BL-58	140BL-54✓	90 0 0	341 30 2✓	15.194✓	14.409	0	-4.821	0	-131368.614	-69537.451	40.002	576.388818	
140BL-54	140BL-20✓	88 26 46	249 56 48✓	2.780✓	-0.953	0	-2.611	-1	-131369.567	-69540.063	32.569	-31.038257	
140BL-20	140BL-21✓	178 1 43	247 58 31✓	3.000✓	-1.125	0	-2.781	0	-131370.692	-69542.844	27.176	-30.573000	
140BL-21	140BL-22✓	177 56 17	245 54 48✓	2.999✓	-1.224	0	-2.738	0	-131371.916	-69545.582	21.657	-26.508168	
140BL-22	140BL-23✓	177 58 30	243 53 18✓	2.995✓	-1.318	0	-2.689	0	-131373.234	-69548.271	16.230	-21.391140	
140BL-23	140BL-24✓	178 11 19	242 4 37✓	3.000✓	-1.405	0	-2.651	0	-131374.639	-69550.922	10.890	-15.300450	
140BL-24	140BL-25✓	177 46 16	239 50 53✓	3.002✓	-1.508	0	-2.596	0	-131376.147	-69553.518	5.643	-8.509644	
140BL-25	140BL-26✓	178 12 19	238 3 12✓	2.999✓	-1.587	0	-2.545	0	-131377.734	-69556.063	0.502	-0.796674	
140BL-26	140BL-55✓	177 53 47	235 56 59✓	1.095✓	-0.613	0	-0.907	0	-131373.347	-69556.970	-2.950	1.808350	
140BL-55	140BL-56✓	105 33 3	161 30 2✓	12.157✓	-11.529	0	3.857	0	-131389.876	-69553.113	0.000	0.000000	
TOTAL..	ソツカクスク= 11	1620 0 0		70.820	0.000	0✓	0.001	-1✓			ハイイオウキヨホウ=	610.881855	
											1/2=	305.44	+0.00
											メンベキ=	305.44✓	

*** マンセキ ケイサン (ハ"イオウキヨホウ) ***

チクメイ ... ミヤコタ"チク トチクカクセイリシ"キ"ヨウ

レイリ NO... 140BL ⁽¹⁾-3₍₃₎✓

NO.	NO.	ANGLE	AZIMUTH	LENGTH	DX	*	DY	*	X	Y	DMD	2A	カーブマンセキ
140BL-54	140BL-58✓		161 30 2						-131383.023	-69532.630			
140BL-58	140BL-59✓	90 0 0	71 30 2✓	1.465✓	0.465	0	1.389	0	-131382.558	-69531.241	6.210	2.887650	
140BL-59	140BL-60✓	201 32 57	93 2 59✓	8.877✓	-0.472	0	8.864	0	-131383.030	-69522.377	16.463	-7.770536	
140BL-60	140BL-53✓	90 0 0	3 2 59✓	18.354✓	18.328	0	0.976	0	-131364.702	-69521.401	26.303	482.081384	
140BL-53	140BL-14✓	78 56 1	261 59 0✓	1.323✓	-0.185	0	-1.310	0	-131364.887	-69522.711	25.969	-4.804265	
140BL-14	140BL-15✓	177 44 39	259 43 39✓	3.000✓	-0.535	0	-2.952	0	-131365.422	-69525.663	21.707	-11.613245	
140BL-15	140BL-16✓	178 20 1	258 3 40✓	3.002✓	-0.621	0	-2.937	0	-131366.043	-69528.600	15.818	-9.822978	
140BL-16	140BL-17✓	177 41 56	255 45 36✓	3.000✓	-0.738	0	-2.908	0	-131366.781	-69531.508	9.973	-7.360074	
140BL-17	140BL-18✓	178 19 43	254 5 19✓	3.002✓	-0.823	0	-2.887	0	-131367.604	-69534.395	4.178	-3.438494	
140BL-18	140BL-19✓	177 45 38	251 50 57✓	2.998✓	-0.934	0	-2.849	0	-131368.538	-69537.244	-1.558	1.455172	
140BL-19	140BL-54✓	178 5 51	249 56 48✓	0.221✓	-0.076	0	-0.208	1	-131368.614	-69537.451	-4.614	0.350664	
140BL-54	140BL-58✓	91 33 14	161 30 2✓	15.194✓	-14.409	0	4.821	0	-131383.023	-69532.630	0.000	0.000000	
TOTAL..	ツツカクスク= 11	1620	0 0	60.436	0.000	0✓	-0.001	1✓			ハ"イオウキキ=	441.965278	
											1/2=	220.98	+0.00
											マンセキ=	220.98✓	

*** メンセキ ケイサン (ハイイウキヨホウ) ***

チクメイ ... ミヤコタチク トチクカクセイリシキヨウ

NO.	NO.	ANGLE	AZIMUTH	LENGTH	DX	*	DY	*	X	Y	DMD	2A	カーブメンセキ
140BL-56	140BL-41 ✓		183 29 10						-131401.383	-69553.814			
140BL-41	140BL-42 ✓	89 33 49	93 2 59 ✓	16.829 ✓	-0.895	0	16.805	1	-131402.278	-69537.008	16.105	-14.413975	
140BL-42	140BL-57 ✓	90 0 0	3 2 59 ✓	18.139 ✓	18.113	0	0.965	0	-131384.165	-69536.043	33.876	613.595988	
140BL-57	140BL-56 ✓	68 27 3	251 30 2 ✓	18.000 ✓	-5.711	0	-17.070	0	-131389.876	-69553.113	17.771	-101.490181	
140BL-56	140BL-41 ✓	111 59 8	183 29 10 ✓	11.528 ✓	-11.507	0	-0.701	0	-131401.383	-69553.814	0.000	0.000000	
TOTAL..	ソツカクスク= 4	360 0 0		64.496	0.000	0 ✓	-0.001	1 ✓			ハイイウキヨホウ=	497.691832	
											1/2=	248.84	+0.00
											メンセキ=	248.84 ✓	

チクメイ NO... 140BL(1)-5 ✓

140BL-57	140BL-42 ✓		183 2 59						-131402.278	-69537.008			
140BL-42	140BL-43 ✓	90 0 0	93 2 59 ✓	13.587 ✓	-0.723	0	13.568	-1	-131403.001	-69523.441	12.602	-9.111246	
140BL-43	140BL-60 ✓	90 0 0	3 2 59 ✓	19.999 ✓	19.971	0	1.064	0	-131383.030	-69522.377	27.233	543.870243	
140BL-60	140BL-59 ✓	90 0 0	273 2 59 ✓	8.877 ✓	0.472	0	-8.864	0	-131382.558	-69531.241	19.433	9.172376	
140BL-59	140BL-57 ✓	158 27 3	251 30 2 ✓	5.064 ✓	-1.607	0	-4.802	0	-131384.165	-69536.043	5.767	-9.267569	
140BL-57	140BL-42 ✓	111 32 57	183 2 59 ✓	18.139 ✓	-18.113	0	-0.965	0	-131402.278	-69537.008	0.000	0.000000	
TOTAL..	ソツカクスク= 5	540 0 0		65.666	0.000	0 ✓	0.001	-1 ✓			ハイイウキヨホウ=	534.663804	
											1/2=	267.33	+0.00
											メンセキ=	267.33 ✓	

*** メンセキ ケイザン (ハ"イオウキヨホウ) ***

チクメイ ... ミヤコタ"チク トチクカクセイリシ"キ"ヨウ

NO.	NO.	ANGLE	AZIMUTH	LENGTH	DX	*	DY	*	X	Y	DMD	2A	か-フ"メンセキ
140BL-53	140BL-60✓		183 2 59						-131383.030	-69522.377			
140BL-60	140BL-61✓	90 0 0	93 2 59✓	16.238✓	-0.864	0	16.215	0	-131383.894	-69506.162	15.239	-13.166496	
140BL-61	140BL-52✓	90 0 0	3 2 59✓	19.994✓	19.966	0	1.064	0	-131363.928	-69505.098	32.518	649.254388	
140BL-52	140BL- 8✓	89 29 54	272 32 53✓	0.660✓	0.029	0	-0.659	0	-131363.899	-69505.757	32.923	0.954767	
140BL- 8	140BL- 9✓	178 54 43	271 27 36✓	2.512✓	0.064	0	-2.511	0	-131363.835	-69508.268	29.753	1.904192	
140BL- 9	140BL-10✓	178 31 2	269 58 38✓	2.506✓	-0.001	0	-2.506	0	-131363.836	-69510.774	24.736	-0.024736	
140BL-10	140BL-11✓	177 56 26	267 55 4✓	3.000✓	-0.109	0	-2.998	0	-131363.945	-69513.772	19.232	-2.096288	
140BL-11	140BL-12✓	178 4 42	265 59 46✓	2.993✓	-0.209	0	-2.986	0	-131364.154	-69516.758	13.248	-2.768832	
140BL-12	140BL-13✓	177 58 48	263 58 34✓	3.002✓	-0.315	0	-2.985	0	-131364.469	-69519.743	7.277	-2.292255	
140BL-13	140BL-53✓	178 0 26	261 59 0✓	1.674✓	-0.233	0	-1.658	0	-131364.702	-69521.401	2.634	-0.613722	
140BL-53	140BL-60✓	101 3 59	183 2 59✓	18.354✓	-18.328	0	-0.976	0	-131383.030	-69522.377	0.000	0.000000	
TOTAL..	ソツカクスウ= 10	1440	0 0	70.933	0.000	0✓	0.000	0✓			ハ"イオウキキ=	631.151018	
											1/2=	315.57	+0.00
											メンセキ=	315.57✓	

セリ NO... 140BL ⁽²⁾✓

140BL-52	140BL-61✓		183 2 59						-131383.894	-69506.162			
140BL-61	140BL-62✓	90 0 0	93 2 59✓	27.703✓	-1.474	0	27.664	1	-131385.368	-69478.497	26.601	-39.209874	
140BL-62	140BL-51✓	90 0 0	3 2 59✓	20.005✓	19.977	0	1.064	0	-131365.391	-69477.433	55.330	1105.327410	
140BL-51	140BL- 7✓	90 0 34	273 3 33✓	25.934✓	1.384	0	-25.897	0	-131364.007	-69503.330	30.497	42.207848	
140BL- 7	140BL-52✓	179 29 20	272 32 53✓	1.769✓	0.079	0	-1.767	-1	-131363.928	-69505.098	2.832	0.223728	
140BL-52	140BL-61✓	90 30 6	183 2 59✓	19.994✓	-19.966	0	-1.064	0	-131383.894	-69506.162	0.000	0.000000	
TOTAL..	ソツカクスウ= 5	540	0 0	95.405	0.000	0✓	0.000	0✓			ハ"イオウキキ=	1108.549112	
											1/2=	554.27	+0.00
											メンセキ=	554.27✓	

セリ NO... 140BL ⁽³⁾✓

*** メンセキ ケイサン (ハ"イオウキヨホウ) ***

チクメイ ... ミヤコタ"チク トチクカクセイリシ"キ"ヨウ

セリ NO... 140BL ⁽⁴⁾ ~~(5)~~ ✓

NO.	NO.	ANGLE	AZIMUTH	LENGTH	DX	*	DY	*	X	Y	DMD	2A	カ-フ"メンセキ
140BL-51	140BL-62 ✓		183 2 59						-131385.368	-69478.497			
140BL-62	140BL-63 ✓	90 0 0	93 2 59 ✓	16.181 ✓	-0.861	0	16.158	0	-131386.229	-69462.339	15.094	-12.995934	
140BL-63	140BL-50 ✓	90 0 0	3 2 59 ✓	20.002 ✓	19.974	0	1.064	0	-131366.255	-69461.275	32.316	645.479784	
140BL-50	140BL-51 ✓	90 0 34	273 3 33 ✓	16.181 ✓	0.864	0	-16.158	0	-131365.391	-69477.433	17.222	14.879808	
140BL-51	140BL-62 ✓	89 59 26	183 2 59 ✓	20.005 ✓	-19.977	0	-1.064	0	-131385.368	-69478.497	0.000	0.000000	
TOTAL..	ソツカクスク= 4	360 0 0		72.369	0.000	0 ✓	0.000	0 ✓			ハ"イメ"セキ=	647.363658	
											1/2=	323.68	+0.00
											メンセキ=	323.68 ✓	

セリ NO... 140BL ⁽⁵⁾ ~~(4)~~ ✓

140BL-50	140BL-63 ✓		183 2 59						-131386.229	-69462.339			
140BL-63	140BL-64 ✓	90 0 0	93 2 59 ✓	22.081 ✓	-1.175	0	22.050	-1	-131387.404	-69440.290	20.985	-24.657375	
140BL-64	140BL-49 ✓	90 0 0	3 2 59 ✓	19.999 ✓	19.971	0	1.064	0	-131367.433	-69439.226	44.098	880.681158	
140BL-49	140BL-50 ✓	90 0 34	273 3 33 ✓	22.081 ✓	1.178	0	-22.050	1	-131366.255	-69461.275	23.113	27.227114	
140BL-50	140BL-63 ✓	89 59 26	183 2 59 ✓	20.002 ✓	-19.974	0	-1.064	0	-131386.229	-69462.339	0.000	0.000000	
TOTAL..	ソツカクスク= 4	360 0 0		84.163	0.000	0 ✓	0.000	0 ✓			ハ"イメ"セキ=	883.250897	
											1/2=	441.62	+0.00
											メンセキ=	441.62 ✓	

*** ムセキ ケイサン (ハ"イオウキヨホウ) ***

チクメイ ... ミヤコタ"チク トチクカクセイリヨ"キ"ヨウ

セリ NO... 140BL ⁽⁶⁾~~(8)~~✓

NO.	NO.	ANGLE	AZIMUTH	LENGTH	DX	*	DY	*	X	Y	DMD	2A	カ-フ"ムセキ
140BL-49	140BL-64✓		183 2 59						-131387.404	-69440.290			
140BL-64	140BL-48✓	90 0 0	93 2 59✓	18.544✓	-0.987	1	18.518	0	-131388.390	-69421.772	17.454	-17.209644	
140BL-48	140BL-5✓	90 1 6	3 4 5✓	16.466✓	16.442	1	0.881	0	-131371.947	-69420.891	36.853	605.973879	
140BL-5	140BL-6✓	135 2 13	318 6 18✓	4.987✓	3.712	0	-3.330	0	-131368.235	-69424.221	34.404	127.707648	
140BL-6	140BL-49✓	134 57 15	273 3 33✓	15.026✓	0.802	0	-15.005	0	-131367.433	-69439.226	16.069	12.887338	
140BL-49	140BL-64✓	89 59 26	183 2 59✓	19.999✓	-19.971	0	-1.064	0	-131387.404	-69440.290	0.000	0.000000	
TOTAL..	ソツカクスウ= 5	540 0 0		75.022	-0.002	2✓	0.000	0✓			ハ"イムセキ=	729.359221	
											1/2=	364.67	+0.00
											ムセキ=	364.67✓	

セリ NO... 140BL ⁽⁷⁾~~(9)~~✓

140BL-64	140BL-47✓		183 2 59						-131407.375	-69441.354			
140BL-47	140BL-3✓	90 0 0	93 2 59✓	15.011✓	-0.799	1	14.990	0	-131408.173	-69426.364	13.926	-11.112948	
140BL-3	140BL-4✓	134 51 5	47 54 4✓	5.001✓	3.353	0	3.711	0	-131404.820	-69422.653	32.627	109.398331	
140BL-4	140BL-48✓	135 10 1	3 4 5✓	16.454✓	16.430	0	0.881	0	-131388.390	-69421.772	37.219	611.508170	
140BL-48	140BL-64✓	89 58 54	273 2 59✓	18.544✓	0.987	-1	-18.518	0	-131387.404	-69440.290	19.582	19.307852	
140BL-64	140BL-47✓	90 0 0	183 2 59✓	19.999✓	-19.971	0	-1.064	0	-131407.375	-69441.354	0.000	0.000000	
TOTAL..	ソツカクスウ= 5	540 0 0		75.009	0.000	0✓	0.000	0✓			ハ"イムセキ=	729.101405	
											1/2=	364.55	+0.00
											ムセキ=	364.55✓	

*** ムンセキ ケイサン (ハイオウキヨホウ) ***

チクメイ ... ミヤコマチク トチクカクセイリシキヨウ

セリ NO... 140BL ~~(10)~~ ⁽⁸⁾ ✓

NO.	NO.	ANGLE	AZIMUTH		LENGTH	DX	*	DY	*	X	Y	DMD	2A	カ-フムンセキ
140BL-63	140BL-46 ✓		183	2 59						-131406.200	-69463.404			
140BL-46	140BL-47 ✓	90 0 0	93	2 59 ✓	22.081 ✓	-1.175	0	22.050	0	-131407.375	-69441.354	20.985	-24.657375	
140BL-47	140BL-64 ✓	90 0 0	3	2 59 ✓	19.999 ✓	19.971	0	1.064	0	-131387.404	-69440.290	44.099	880.701129	
140BL-64	140BL-63 ✓	90 0 0	273	2 59 ✓	22.081 ✓	1.175	0	-22.050	1	-131386.229	-69462.339	23.114	27.158950	
140BL-63	140BL-46 ✓	90 0 0	183	2 59 ✓	19.999 ✓	-19.971	0	-1.064	-1	-131406.200	-69463.404	0.000	0.000000	
TOTAL..	ソツカクスウ= 4	360 0 0			84.160	0.000	0 ✓	0.000	0 ✓			ハイムンセキ=	883.202704	
												1/2=	441.60	+0.00
												ムンセキ=	441.60 ✓	

セリ NO... 140BL ~~(11)~~ ⁽⁹⁾ ✓

140BL-62	140BL-45 ✓		183	2 59						-131405.339	-69479.562			
140BL-45	140BL-46 ✓	90 0 0	93	2 59 ✓	16.181 ✓	-0.861	0	16.158	0	-131406.200	-69463.404	15.093	-12.995073	
140BL-46	140BL-63 ✓	90 0 0	3	2 59 ✓	19.999 ✓	19.971	0	1.064	1	-131386.229	-69462.339	32.316	645.382836	
140BL-63	140BL-62 ✓	90 0 0	273	2 59 ✓	16.181 ✓	0.861	0	-16.158	0	-131385.368	-69478.497	17.223	14.829003	
140BL-62	140BL-45 ✓	90 0 0	183	2 59 ✓	19.999 ✓	-19.971	0	-1.064	-1	-131405.339	-69479.562	0.000	0.000000	
TOTAL..	ソツカクスウ= 4	360 0 0			72.360	0.000	0 ✓	0.000	0 ✓			ハイムンセキ=	647.216766	
												1/2=	323.60	+0.00
												ムンセキ=	323.60 ✓	

*** メンセキ ケイサン (ハ"イオウキヨホウ) ***

チクメイ ... ミヤコタ"チク トチクカクセイリシ"キ"ヨウ

レイ NO... 140BL ⁽¹⁰⁾/~~(12)~~ ✓

NO.	NO.	ANGLE	AZIMUTH		LENGTH	DX	*	DY	*	X	Y	DMD	2A	カ-フ"メンセキ
140BL-61	140BL-44 ✓		183	2 59						-131403.865	-69507.226			
140BL-44	140BL-45 ✓	90 0 0	93	2 59 ✓	27.703 ✓	-1.474	0	27.664	0	-131405.339	-69479.562	26.600	-39.208400	
140BL-45	140BL-62 ✓	90 0 0	3	2 59 ✓	19.999 ✓	19.971	0	1.064	1	-131385.368	-69478.497	55.329	1104.975459	
140BL-62	140BL-61 ✓	90 0 0	273	2 59 ✓	27.703 ✓	1.474	0	-27.664	-1	-131383.894	-69506.162	28.729	42.346546	
140BL-61	140BL-44 ✓	90 0 0	183	2 59 ✓	19.999 ✓	-19.971	0	-1.064	0	-131403.865	-69507.226	0.000	0.000000	
TOTAL..	ソツカクスク= 4	360 0 0			95.404	0.000	0 ✓	0.000	0 ✓			ハ"イメンセキ=	1108.113605	
												1/2=	554.05	+0.00
												メンセキ=	554.05 ✓	

レイ NO... 140BL ⁽¹¹⁾/~~(13)~~ ✓

140BL-60	140BL-43 ✓		183	2 59						-131403.001	-69523.441			
140BL-43	140BL-44 ✓	90 0 0	93	2 59 ✓	16.238 ✓	-0.864	0	16.215	0	-131403.865	-69507.226	15.151	-13.090464	
140BL-44	140BL-61 ✓	90 0 0	3	2 59 ✓	19.999 ✓	19.971	0	1.064	0	-131383.894	-69506.162	32.430	647.659530	
140BL-61	140BL-60 ✓	90 0 0	273	2 59 ✓	16.238 ✓	0.864	0	-16.215	0	-131383.030	-69522.377	17.279	14.929056	
140BL-60	140BL-43 ✓	90 0 0	183	2 59 ✓	19.999 ✓	-19.971	0	-1.064	0	-131403.001	-69523.441	0.000	0.000000	
TOTAL..	ソツカクスク= 4	360 0 0			72.474	0.000	0 ✓	0.000	0 ✓			ハ"イメンセキ=	649.498122	
												1/2=	324.74	+0.00
												メンセキ=	324.74 ✓	

*** ケツコウ トラハース ***

チクメイ ... ミヤコタチク トチクカクセイリシキヨウ

NO.	NO.	ANGLE	*	AZIMUTH	LENGTH	DX	*	DY	*	X	Y	NO.
	140BL- 2✓									-131400.311	-69573.932	140BL- 2
140BL- 2	140BL-41✓			93 2 59✓	20.147✓	-1.072	0	20.118	0	-131401.383	-69553.814	140BL- 41
140BL- 41	140BL-42✓	180 0 0		93 2 59✓	16.829✓	-0.895	0	16.805	1	-131402.278	-69537.008	140BL- 42
140BL- 42	140BL-43✓	180 0 0		93 2 59✓	13.587✓	-0.723	0	13.568	-1	-131403.001	-69523.441	140BL- 43
140BL- 43	140BL-44✓	180 0 0		93 2 59✓	16.238✓	-0.864	0	16.215	0	-131403.865	-69507.226	140BL- 44
140BL- 44	140BL-45✓	180 0 0		93 2 59✓	27.703✓	-1.474	0	27.664	0	-131405.339	-69479.562	140BL- 45
140BL- 45	140BL-46✓	180 0 0		93 2 59✓	16.181✓	-0.861	0	16.158	0	-131406.200	-69463.404	140BL- 46
140BL- 46	140BL-47✓	180 0 0		93 2 59✓	22.081✓	-1.175	0	22.050	0	-131407.375	-69441.354	140BL- 47
140BL- 47	140BL- 3✓	180 0 0		93 2 59✓	15.011✓	-0.799	1	14.990	0	-131408.173	-69426.364	140BL- 3
	TOTAL..	1260 0 0			147.777✓	-7.863	1✓	147.568	0✓			
	140BL- 4✓									-131404.820	-69422.653	140BL- 4
140BL- 4	140BL-48✓			3 4 5✓	16.454✓	16.430	0	0.881	0	-131388.390	-69421.772	140BL- 48
140BL- 48	140BL- 5✓	180 0 0		3 4 5✓	16.466✓	16.442	1	0.881	0	-131371.947	-69420.891	140BL- 5
	TOTAL..	180 0 0			32.920✓	32.872	1✓	1.762	0✓			
	140BL- 6✓									-131368.235	-69424.221	140BL- 6
140BL- 6	140BL-49✓			273 3 33✓	15.026✓	0.802	0	-15.005	0	-131367.433	-69439.226	140BL- 49
140BL- 49	140BL-50✓	180 0 0		273 3 33✓	22.081✓	1.178	0	-22.050	1	-131366.255	-69461.275	140BL- 50
140BL- 50	140BL-51✓	180 0 0		273 3 33✓	16.181✓	0.864	0	-16.158	0	-131365.391	-69477.433	140BL- 51
140BL- 51	140BL- 7✓	180 0 0		273 3 33✓	25.934✓	1.384	0	-25.897	0	-131364.007	-69503.330	140BL- 7
	TOTAL..	540 0 0			79.222✓	4.228	0✓	-79.110	1✓			
	140BL- 7✓									-131364.007	-69503.330	140BL- 7

*** ケツコウ トラハース ***

チクメイ ... ミヤコタチク トチクカクセイリシキヨウ

NO.	NO.	ANGLE	*	AZIMUTH	LENGTH	DX	*	DY	*	X	Y	NO.
140BL-7	140BL-52 ✓			272 32 53 ✓	1.769 ✓	0.079	0	-1.767	-1	-131363.928	-69505.098	140BL-52
140BL-52	140BL-8 ✓	180 0 0		272 32 53 ✓	0.660 ✓	0.029	0	-0.659	0	-131363.899	-69505.757	140BL-8
	TOTAL..	180 0 0			2.429 ✓	0.108	0 ✓	-2.426	-1 ✓			
	140BL-13 ✓									-131364.469	-69519.743	140BL-13
140BL-13	140BL-53 ✓			261 59 0 ✓	1.674 ✓	-0.233	0	-1.658	0	-131364.702	-69521.401	140BL-53
140BL-53	140BL-14 ✓	180 0 0		261 59 0 ✓	1.323 ✓	-0.185	0	-1.310	0	-131364.887	-69522.711	140BL-14
	TOTAL..	180 0 0			2.997 ✓	-0.418	0 ✓	-2.968	0 ✓			
	140BL-19 ✓									-131368.538	-69537.244	140BL-19
140BL-19	140BL-54 ✓			249 56 48 ✓	0.221 ✓	-0.076	0	-0.208	1	-131368.614	-69537.451	140BL-54
140BL-54	140BL-20 ✓	180 0 0		249 56 48 ✓	2.780 ✓	-0.953	0	-2.611	-1	-131369.567	-69540.063	140BL-20
	TOTAL..	180 0 0			3.001 ✓	-1.029	0 ✓	-2.819	0 ✓			
	140BL-26 ✓									-131377.734	-69556.063	140BL-26
140BL-26	140BL-55 ✓			235 56 59 ✓	1.095 ✓	-0.613	0	-0.907	0	-131378.347	-69556.970	140BL-55
140BL-55	140BL-27 ✓	180 0 0		235 56 59 ✓	1.905 ✓	-1.067	0	-1.578	-1	-131379.414	-69558.549	140BL-27
	TOTAL..	180 0 0			3.000 ✓	-1.680	0 ✓	-2.485	-1 ✓			
	140BL-56 ✓									-131389.876	-69553.113	140BL-56
140BL-56	140BL-58 ✓			71 30 2 ✓	21.599 ✓	6.853	0	20.483	0	-131383.023	-69532.630	140BL-58
140BL-58	140BL-59 ✓	180 0 0		71 30 2 ✓	1.465 ✓	0.465	0	1.389	0	-131382.558	-69531.241	140BL-59
	TOTAL..	180 0 0			23.064 ✓	7.318	0 ✓	21.872	0 ✓			

*** ケツコウ トラハ"-入 ***

チクメイ ... ミヤコタ"チク トチクカクセイリシ"キ"ヨウ

NO.	NO.	ANGLE	*	AZIMUTH	LENGTH	DX	*	DY	*	X	Y	NO.
	140BL-56 ✓									-131389.876	-69553.113	140BL-56
140BL-56	140BL-57 ✓			71 30 2 ✓	18.000 ✓	5.711	0	17.070	0	-131384.165	-69536.043	140BL-57
140BL-57	140BL-59 ✓	180 0 0		71 30 2 ✓	5.064 ✓	1.607	0	4.802	0	-131382.558	-69531.241	140BL-59
	TOTAL..	180 0 0			23.064 ✓	7.318	0 ✓	21.872	0 ✓			
	140BL-56 ✓									-131389.876	-69553.113	140BL-56
140BL-56	140BL-57 ✓			71 30 2 ✓	18.000 ✓	5.711	0	17.070	0	-131384.165	-69536.043	140BL-57
140BL-57	140BL-58 ✓	180 0 0		71 30 2 ✓	3.599 ✓	1.142	0	3.413	0	-131383.023	-69532.630	140BL-58
140BL-58	140BL-59 ✓	180 0 0		71 30 2 ✓	1.465 ✓	0.465	0	1.389	0	-131382.558	-69531.241	140BL-59
	TOTAL..	360 0 0			23.064 ✓	7.318	0 ✓	21.872	0 ✓			
	140BL-59 ✓									-131382.558	-69531.241	140BL-59
140BL-59	140BL-60 ✓			93 2 59 ✓	8.877 ✓	-0.472	0	8.864	0	-131383.030	-69522.377	140BL-60
140BL-60	140BL-61 ✓	180 0 0		93 2 59 ✓	16.238 ✓	-0.864	0	16.215	0	-131383.894	-69506.162	140BL-61
140BL-61	140BL-62 ✓	180 0 0		93 2 59 ✓	27.703 ✓	-1.474	0	27.664	1	-131385.368	-69478.497	140BL-62
140BL-62	140BL-63 ✓	180 0 0		93 2 59 ✓	16.181 ✓	-0.861	0	16.158	0	-131386.229	-69462.339	140BL-63
140BL-63	140BL-64 ✓	180 0 0		93 2 59 ✓	22.081 ✓	-1.175	0	22.050	-1	-131387.404	-69440.290	140BL-64
140BL-64	140BL-48 ✓	180 0 0		93 2 59 ✓	18.544 ✓	-0.987	1	18.518	0	-131388.390	-69421.772	140BL-48
	TOTAL..	900 0 0			109.624 ✓	-5.833	1 ✓	109.469	0 ✓			
	140BL-43 ✓									-131403.001	-69523.441	140BL-43
140BL-43	140BL-60 ✓			3 2 59 ✓	19.999 ✓	19.971	0	1.064	0	-131383.030	-69522.377	140BL-60
140BL-60	140BL-53 ✓	180 0 0		3 2 59 ✓	18.354 ✓	18.328	0	0.976	0	-131364.702	-69521.401	140BL-53
	TOTAL..	180 0 0			38.353 ✓	38.299	0 ✓	2.040	0 ✓			

*** ケツコウ トラハース ***

チクメイ ... ミヤコタチク トチクカクセイリシキヨウ

NO.	NO.	ANGLE	*	AZIMUTH	LENGTH	DX	*	DY	*	X	Y	NO.
	140BL-44 ✓									-131403.865	-69507.226	140BL-44
140BL-44	140BL-61 ✓			3 2 59 ✓	19.999 ✓	19.971	0	1.064	0	-131383.894	-69506.162	140BL-61
140BL-61	140BL-52 ✓	180 0 0		3 2 59 ✓	19.994 ✓	19.966	0	1.064	0	-131363.928	-69505.098	140BL-52
	TOTAL..	180 0 0			39.993 ✓	39.937	0 ✓	2.128	0 ✓			
	140BL-45 ✓									-131405.339	-69479.562	140BL-45
140BL-45	140BL-62 ✓			3 2 59 ✓	19.999 ✓	19.971	0	1.064	1	-131385.368	-69478.497	140BL-62
140BL-62	140BL-51 ✓	180 0 0		3 2 59 ✓	20.005 ✓	19.977	0	1.064	0	-131365.391	-69477.433	140BL-51
	TOTAL..	180 0 0			40.004 ✓	39.948	0 ✓	2.128	1 ✓			
	140BL-46 ✓									-131406.200	-69463.404	140BL-46
140BL-46	140BL-63 ✓			3 2 59 ✓	19.999 ✓	19.971	0	1.064	1	-131386.229	-69462.339	140BL-63
140BL-63	140BL-50 ✓	180 0 0		3 2 59 ✓	20.002 ✓	19.974	0	1.064	0	-131366.255	-69461.275	140BL-50
	TOTAL..	180 0 0			40.001 ✓	39.945	0 ✓	2.128	1 ✓			
	140BL-47 ✓									-131407.375	-69441.354	140BL-47
140BL-47	140BL-64 ✓			3 2 59 ✓	19.999 ✓	19.971	0	1.064	0	-131387.404	-69440.290	140BL-64
140BL-64	140BL-49 ✓	180 0 0		3 2 59 ✓	19.999 ✓	19.971	0	1.064	0	-131367.433	-69439.226	140BL-49
	TOTAL..	180 0 0			39.998 ✓	39.942	0 ✓	2.128	0 ✓			