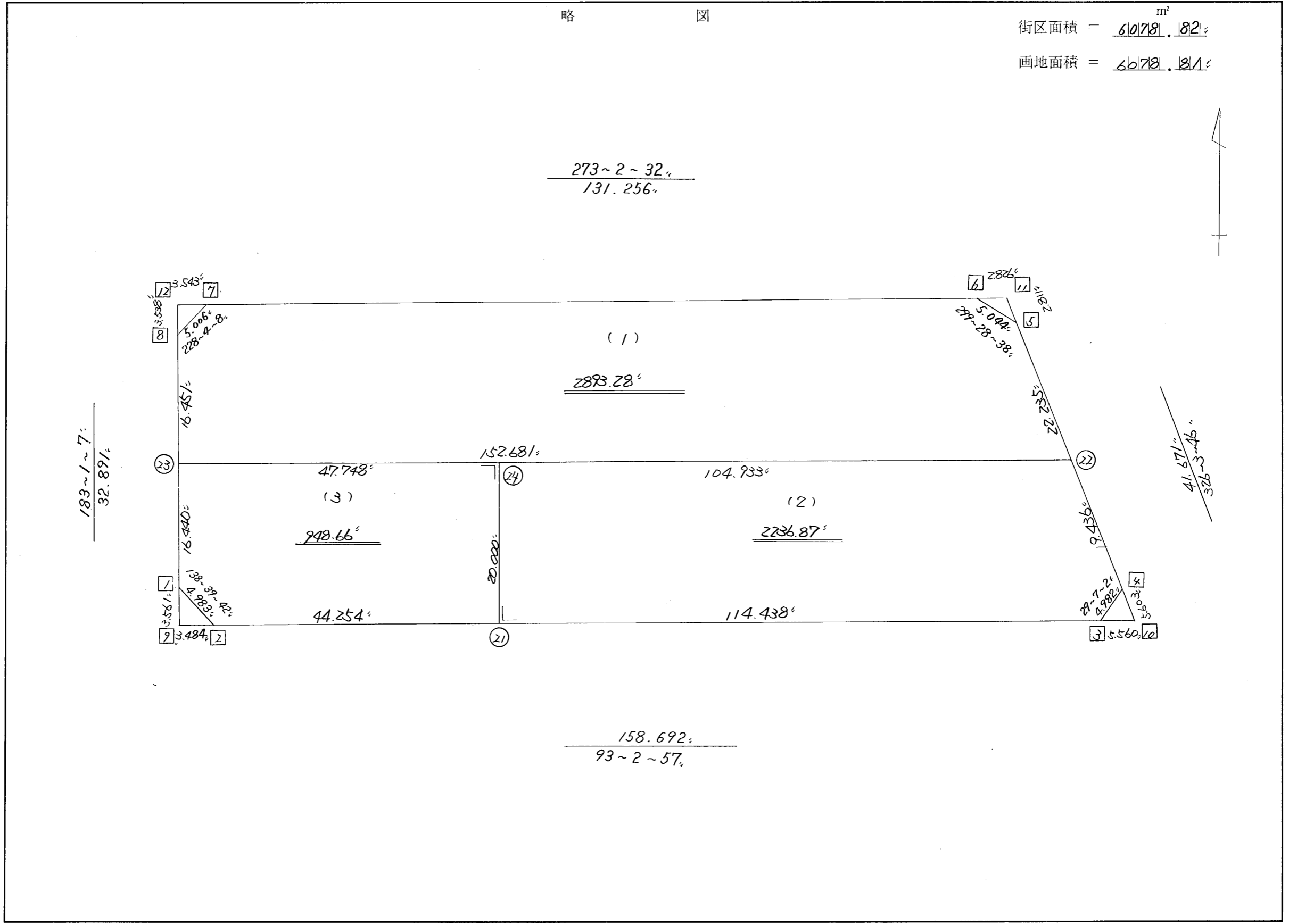


略 図

街区面積 = 6078.82 m²
 画地面積 = 6678.81



街区点番号 1 ~ 12 筆界点番号 21 ~ 24 画地番号 (/) ~ (3)

*** ムセキ カイサツ (ハ"イオウキヨホウ) ***

チクメイ ... ミヤコタ"チク トチクカクセイリシ"キ"ヨウ

セイリ NO... 135BL"

NO.	NO.	ANGLE	AZIMUTH	LENGTH	DX	*	DY	*	X	Y	DMD	2A	カ-フ"ムセキ
135BL- 8	135BL- 1"		183 1 7"						-131455.256	-69340.212			
135BL- 1	135BL- 2"	135 38 35	138 39 42"	4.983"	-3.741	0	3.291	0	-131458.997	-69336.921	1.559	-5.832219	
135BL- 2	135BL- 3"	134 23 15	93 2 57"	158.692"	-8.441	0	158.467	0	-131467.438	-69178.454	163.317	-1378.558797	
135BL- 3	135BL- 4"	116 4 5	29 7 2"	4.982"	4.352	0	2.424	0	-131463.086	-69176.030	324.208	1410.953216	
135BL- 4	135BL- 5"	116 56 44	326 3 46"	41.671"	34.572	0	-23.264	0	-131428.514	-69199.294	303.368	10488.038496	
135BL- 5	135BL- 6"	153 24 52	299 28 38"	5.044"	2.482	0	-4.391	0	-131426.032	-69203.685	275.713	684.319666	
135BL- 6	135BL- 7"	153 33 54	273 2 32"	131.256"	6.966	0	-131.071	0	-131419.066	-69334.756	140.251	976.988466	
135BL- 7	135BL- 8"	135 1 36	228 4 8"	5.006"	-3.345	0	-3.724	0	-131422.411	-69338.480	5.456	-18.250320	
135BL- 8	135BL- 1"	134 56 59	183 1 7"	32.891"	-32.845	0	-1.732	0	-131455.256	-69340.212	0.000	0.000000	
TOTAL..	ソツカクスク= 8	1080	0 0	384.525	0.000	0"	0.000	0"			ハ"イムセキ=	12157.658508	
											1/2=	6078.82	+0.00
											ムセキ=	6078.82"	

*** メンセキ ケイサン (ハイオウキヨホウ) ***

チクメイ ... ミヤコタチク トチクカクセイリシキヨウ

レイ NO... 135BL(1) ✓

NO.	NO.	ANGLE	AZIMUTH	LENGTH	DX	*	DY	*	X	Y	DMD	2A	カーブメンセキ
135BL- 8	135BL-23 ✓		183 1 7 ✓						-131438.839	-69339.346			
135BL-23	135BL-22 ✓	90 1 50	93 2 57 ✓	152.681 ✓	-8.122	0	152.465	0	-131446.961	-69186.881	151.599	-1231.287078	
135BL-22	135BL- 5 ✓	53 0 49	326 3 46 ✓	22.235 ✓	18.447	0	-12.413	0	-131428.514	-69199.294	291.651	5380.085997	
135BL- 5	135BL- 6 ✓	153 24 52	299 28 38 ✓	5.044 ✓	2.482	0	-4.391	0	-131426.032	-69203.685	274.847	682.170254	
135BL- 6	135BL- 7 ✓	153 33 54	273 2 32 ✓	131.256 ✓	6.966	0	-131.071	0	-131419.066	-69334.756	139.385	970.955910	
135BL- 7	135BL- 8 ✓	135 1 36	228 4 8 ✓	5.006 ✓	-3.345	0	-3.724	0	-131422.411	-69338.480	4.590	-15.353550	
135BL- 8	135BL-23 ✓	134 56 59	183 1 7 ✓	16.451 ✓	-16.428	0	-0.866	0	-131438.839	-69339.346	0.000	0.000000	
TOTAL..	ソツカクスク= 6	720 0 0		332.673	0.000	0 ✓	0.000	0 ✓			ハイメンセキ=	5786.571533	
											1/2=	2893.28	+0.00
											メンセキ=	2893.28 ✓	

レイ NO... 135BL(2) ✓

135BL-24	135BL-21 ✓		183 2 57 ✓						-131461.351	-69292.730			
135BL-21	135BL- 3 ✓	90 0 0	93 2 57 ✓	114.438 ✓	-6.087	0	114.276	0	-131467.438	-69178.454	113.212	-689.121444	
135BL- 3	135BL- 4 ✓	116 4 5	29 7 2 ✓	4.982 ✓	4.352	0	2.424	0	-131463.086	-69176.030	229.912	1000.577024	
135BL- 4	135BL-22 ✓	116 56 44	326 3 46 ✓	19.436 ✓	16.125	0	-10.851	0	-131446.961	-69186.881	221.485	3571.445625	
135BL-22	135BL-24 ✓	126 59 11	273 2 57 ✓	104.933 ✓	5.582	0	-104.784	-1	-131441.379	-69291.666	105.849	590.849118	
135BL-24	135BL-21 ✓	90 0 0	183 2 57 ✓	20.000 ✓	-19.972	0	-1.064	0	-131461.351	-69292.730	0.000	0.000000	
TOTAL..	ソツカクスク= 5	540 0 0		263.789	0.000	0 ✓	0.001	-1 ✓			ハイメンセキ=	4473.750323	
											1/2=	2236.87	+0.00
											メンセキ=	2236.87 ✓	

*** メンセキ カイサン (ハイオウキヨホウ) ***

チクメイ ... ミヤコタチク トチクカクセイリシキヨウ

レイ NO... 135BL(3)✓

NO.	NO.	ANGLE	AZIMUTH	LENGTH	DX	*	DY	*	X	Y	DMD	2A	カ-フメンセキ
135BL-23	135BL- 1✓		183 1 7✓						-131455.256	-69340.212			
135BL- 1	135BL- 2✓	135 38 35	138 39 42✓	4.983✓	-3.741	0	3.291	0	-131458.997	-69336.921	2.425	-9.071925	
135BL- 2	135BL-21✓	134 23 15	93 2 57✓	44.254✓	-2.354	0	44.191	0	-131461.351	-69292.730	49.907	-117.481078	
135BL-21	135BL-24✓	90 0 0	3 2 57✓	20.000✓	19.972	0	1.064	0	-131441.379	-69291.666	95.162	1900.575464	
135BL-24	135BL-23✓	90 0 0	273 2 57✓	47.748✓	2.540	0	-47.680	0	-131438.839	-69339.346	48.546	123.306840	
135BL-23	135BL- 1✓	89 58 10	183 1 7✓	16.440✓	-16.417	0	-0.866	0	-131455.256	-69340.212	0.000	0.000000	
TOTAL..	ソツカクスク= 5	540 0 0		133.425	0.000	0✓	0.000	0✓			ハイメンセキ=	1897.329301	
											1/2=	948.66	+0.00
											メンセキ=	948.66✓	

*** ケツコウ トラハ"-入 ***

チクメイ ... ミヤコタチク トチクカクセイリシ"キ"ヨウ

NO.	NO.	ANGLE	*	AZIMUTH	LENGTH	DX	*	DY	*	X	Y	NO.
	135BL- 2									-131458.997	-69336.921	135BL- 2
135BL- 2	135BL-21		93	2 57	44.254	-2.354	0	44.191	0	-131461.351	-69292.730	135BL-21
135BL-21	135BL- 3	180 0 0	93	2 57	114.438	-6.087	0	114.276	0	-131467.438	-69178.454	135BL- 3
	TOTAL..	180 0 0			158.692	-8.441	0	158.467	0			
	135BL- 4									-131463.086	-69176.030	135BL- 4
135BL- 4	135BL-22		326	3 46	19.436	16.125	0	-10.851	0	-131446.961	-69186.881	135BL-22
135BL-22	135BL- 5	180 0 0	326	3 46	22.235	18.447	0	-12.413	0	-131428.514	-69199.294	135BL- 5
	TOTAL..	180 0 0			41.671	34.572	0	-23.264	0			
	135BL- 8									-131422.411	-69338.480	135BL- 8
135BL- 8	135BL-23		183	1 7	16.451	-16.428	0	-0.866	0	-131438.839	-69339.346	135BL-23
135BL-23	135BL- 1	180 0 0	183	1 7	16.440	-16.417	0	-0.866	0	-131455.256	-69340.212	135BL- 1
	TOTAL..	180 0 0			32.891	-32.845	0	-1.732	0			
	135BL-23									-131438.839	-69339.346	135BL-23
135BL-23	135BL-24		93	2 57	47.748	-2.540	0	47.680	0	-131441.379	-69291.666	135BL-24
135BL-24	135BL-22	180 0 0	93	2 57	104.933	-5.582	0	104.784	1	-131446.961	-69186.881	135BL-22
	TOTAL..	180 0 0			152.681	-8.122	0	152.464	1			