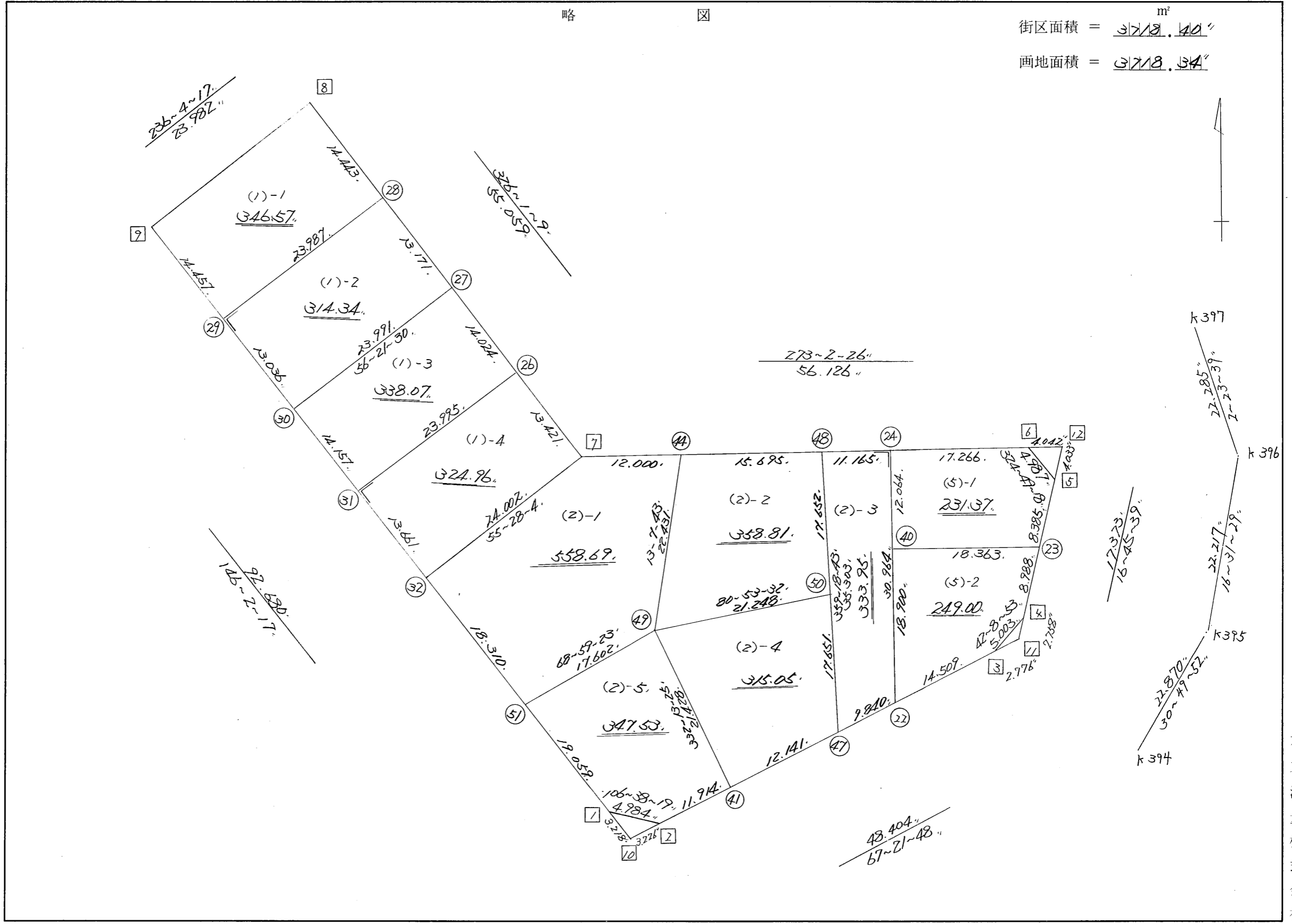


街廓原子一覽表用紙

(130° BL)

略 図

街区面積 = 3718.40 m²
画地面積 = 3718.54 m²

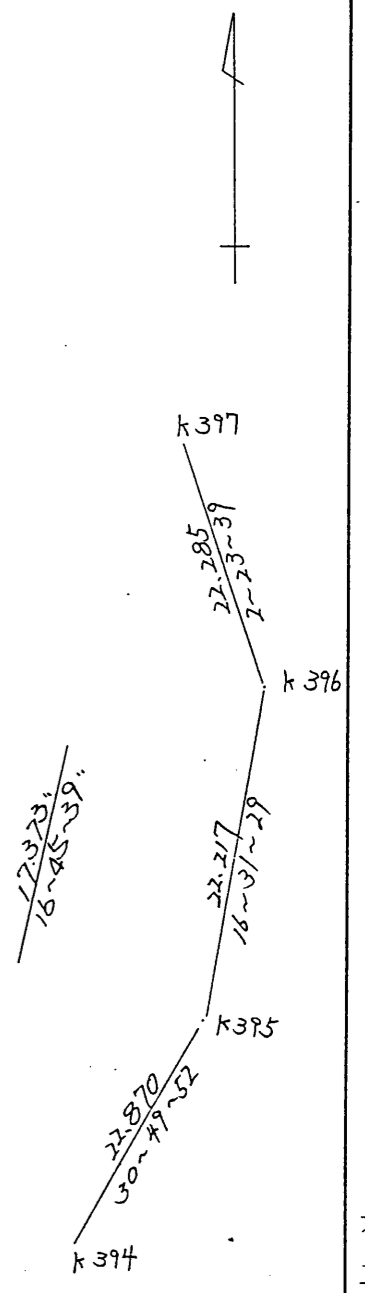
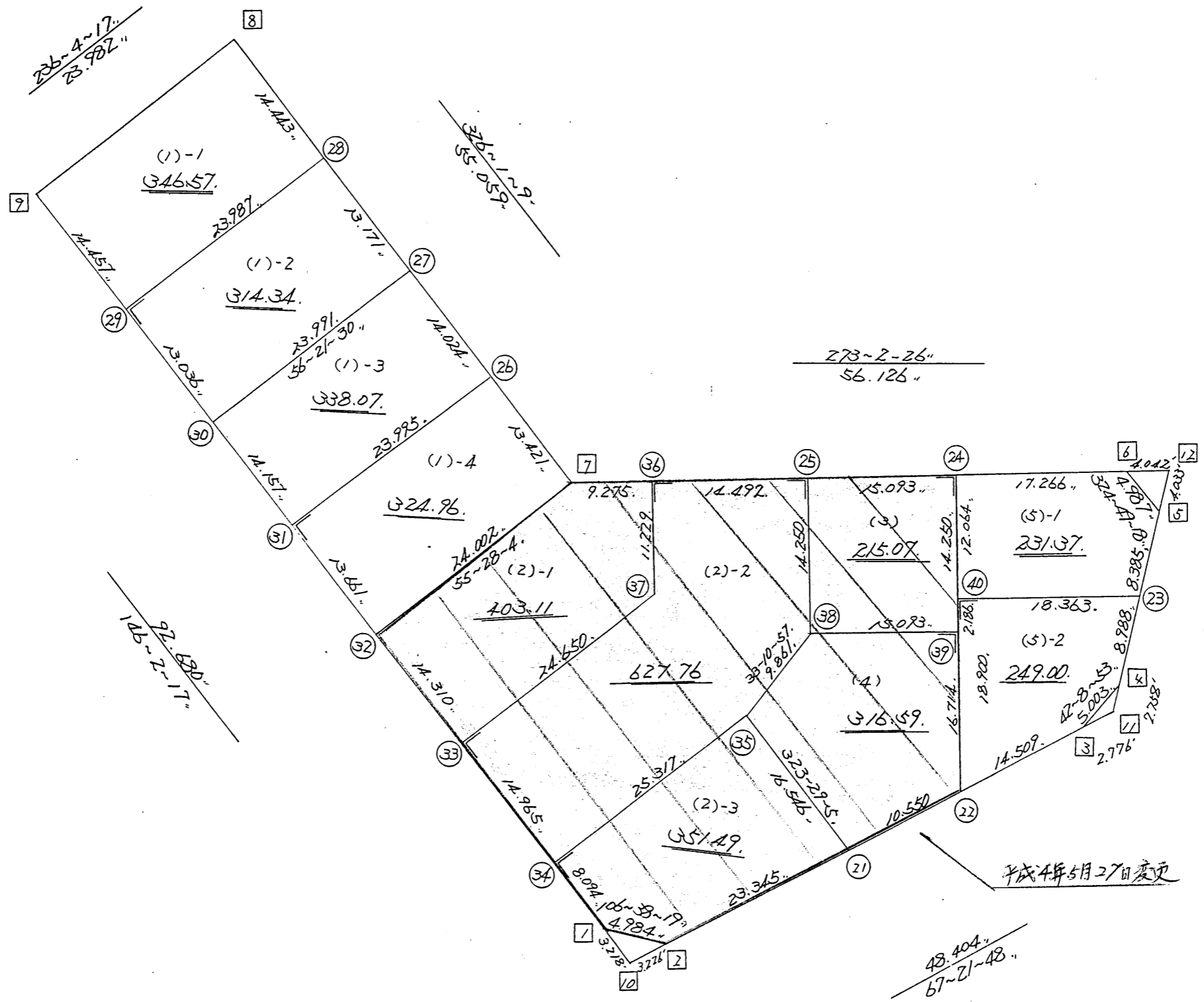


街区点番号 1 ~ 12 画地番号 (1) ~ (5)

略 図

街区面積 = $\frac{31718.44}{m^2}$

画地面積 = $\frac{31718.33}{m^2}$



街区点番号 1 ~ 12 筆界点番号 (21) ~ (40) 画地番号 (1) ~ (5)

*** メンセキ ケイザン (ハイオウキヨホウ) ***

チクメイ ... ミヤコタチク トチクカクセイリシキヨウ

セリ NO... 130BL✓

NO.	NO.	ANGLE	AZIMUTH	LENGTH	DX	*	DY	*	X	Y	DMD	2A	カーブメンセキ
130BL- 9	130BL- 1✓		146 2 17						-131489.174	-69084.908			
130BL- 1	130BL- 2✓	140 36 2	106 38 19✓	4.984✓	-1.427	0	4.775	0	-131490.601	-69080.133	56.550	-80.696850	
130BL- 2	130BL- 3✓	140 43 29	67 21 48✓	48.404✓	18.630	0	44.675	0	-131471.971	-69035.458	106.000	1974.780000	
130BL- 3	130BL- 4✓	154 47 5	42 8 53✓	5.003✓	3.709	0	3.357	0	-131468.262	-69032.101	154.032	571.304688	
130BL- 4	130BL- 5✓	154 36 46	16 45 39✓	17.373✓	16.635	0	5.010	0	-131451.627	-69027.091	162.399	2701.507365	
130BL- 5	130BL- 6✓	128 3 39	324 49 18✓	4.987✓	4.076	0	-2.873	0	-131447.551	-69029.964	164.536	670.648736	
130BL- 6	130BL- 7✓	128 13 8	273 2 26✓	56.126✓	2.977	0	-56.047	0	-131444.574	-69086.011	105.616	314.418832	
130BL- 7	130BL- 8✓	232 58 43	326 1 9✓	55.059✓	45.656	0	-30.773	0	-131398.918	-69116.784	18.796	858.150176	
130BL- 8	130BL- 9✓	90 3 8	236 4 17✓	23.982✓	-13.386	0	-19.899	0	-131412.304	-69136.683	-31.876	426.692136	
130BL- 9	130BL- 1✓	89 58 0	146 2 17✓	92.680✓	-76.870	0	51.775	0	-131489.174	-69084.908	0.000	0.000000	
TOTAL...	ソツカクスウ= 9	1260	0 0	308.598	0.000	0✓	0.000	0✓			ハイメンセキ=	7436.805083	
											1/2=	3718.40	+0.00
											メンセキ=	3718.40✓	

*** メンセキ ケイザン (ハ"イオウキヨホウ) ***

チクメイ ... ミヤコタ"チク トチクカクセイリシ"キ"ヨウ

レイリ NO... 130BL(1)-1 ✓

NO.	NO.	ANGLE	AZIMUTH	LENGTH	DX	*	DY	*	X	Y	DMD	2A	カ-フ"メンセキ
130BL- 9	130BL-29 ✓		146 2 17						-131424.295	-69128.607			
130BL-29	130BL-28 ✓	90 0 0	56 2 17 ✓	23.987 ✓	13.400	1	19.895	0	-131410.894	-69108.712	27.971	374.839371	
130BL-28	130BL- 8 ✓	89 58 52	326 1 9 ✓	14.443 ✓	11.976	0	-8.072	0	-131398.918	-69116.784	39.794	476.572944	
130BL- 8	130BL- 9 ✓	90 3 8	236 4 17 ✓	23.982 ✓	-13.386	0	-19.899	0	-131412.304	-69136.683	11.823	-158.262678	
130BL- 9	130BL-29 ✓	89 58 0	146 2 17 ✓	14.457 ✓	-11.991	0	8.076	0	-131424.295	-69128.607	0.000	0.000000	
TOTAL..	ソツカクスク= 4	360 0 0		76.869	-0.001	1 ✓	0.000	0 ✓			ハ"イメンセキ=	693.149637	
											1/2=	346.57	+0.00
											メンセキ=	346.57 ✓	

レイリ NO... 130BL(1)-2 ✓

130BL-29	130BL-30 ✓		146 2 17						-131435.107	-69121.324			
130BL-30	130BL-27 ✓	90 19 13	56 21 30 ✓	23.991 ✓	13.291	0	19.973	0	-131421.816	-69101.351	27.256	362.259496	
130BL-27	130BL-28 ✓	89 39 39	326 1 9 ✓	13.171 ✓	10.922	0	-7.361	0	-131410.894	-69108.712	39.868	435.438296	
130BL-28	130BL-29 ✓	90 1 8	236 2 17 ✓	23.987 ✓	-13.400	-1	-19.895	0	-131424.295	-69128.607	12.612	-169.013412	
130BL-29	130BL-30 ✓	90 0 0	146 2 17 ✓	13.036 ✓	-10.812	0	7.282	1	-131435.107	-69121.324	0.000	0.000000	
TOTAL..	ソツカクスク= 4	360 0 0		74.185	0.001	-1 ✓	-0.001	1 ✓			ハ"イメンセキ=	628.684380	
											1/2=	314.34	+0.00
											メンセキ=	314.34 ✓	

*** メンセキ ケイサン (ハ"イオウキヨホウ) ***

チクメイ ... ミヤコタ"チク トチクカクセイリシ"キ"ヨウ

セリ NO... 130BL(1)-3 ✓

NO.	NO.	ANGLE	AZIMUTH	LENGTH	DX	*	DY	*	X	Y	DMD	2A	カ-フ"メンセキ
130BL-30	130BL-31 ✓		146 2 17						-131446.849	-69113.415			
130BL-31	130BL-26 ✓	90 0 0	56 2 17 ✓	23.995 ✓	13.405	-1	19.902	0	-131433.445	-69093.513	27.811	372.778644	
130BL-26	130BL-27 ✓	89 58 52	326 1 9 ✓	14.024 ✓	11.629	0	-7.838	0	-131421.816	-69101.351	39.875	463.706375	
130BL-27	130BL-30 ✓	90 20 21	236 21 30 ✓	23.991 ✓	-13.291	0	-19.973	0	-131435.107	-69121.324	12.064	-160.342624	
130BL-30	130BL-31 ✓	89 40 47	146 2 17 ✓	14.157 ✓	-11.742	0	7.909	0	-131446.849	-69113.415	0.000	0.000000	
TOTAL..	ソツカク入= 4	360 0 0		76.167	0.001	-1 ✓	0.000	0 ✓			ハ"イメンセキ=	676.142395	
											1/2=	338.07	+0.00
											メンセキ=	338.07 ✓	

セリ NO... 130BL(1)-4 ✓

130BL-31	130BL-32 ✓		146 2 17						-131458.180	-69105.784			
130BL-32	130BL-7 ✓	89 25 47	55 28 4 ✓	24.002 ✓	13.606	0	19.773	0	-131444.574	-69086.011	27.404	372.858824	
130BL-7	130BL-26 ✓	90 33 5	326 1 9 ✓	13.421 ✓	11.129	0	-7.501	-1	-131433.445	-69093.513	39.675	441.543075	
130BL-26	130BL-31 ✓	90 1 8	236 2 17 ✓	23.995 ✓	-13.405	1	-19.902	0	-131446.849	-69113.415	12.271	-164.480484	
130BL-31	130BL-32 ✓	90 0 0	146 2 17 ✓	13.661 ✓	-11.331	0	7.632	-1	-131458.180	-69105.784	0.000	0.000000	
TOTAL..	ソツカク入= 4	360 0 0		75.079	-0.001	1 ✓	0.002	-2 ✓			ハ"イメンセキ=	649.921415	
											1/2=	324.96	+0.00
											メンセキ=	324.96 ✓	

*** メンセキ ケイサン (ハイオウキヨホウ) ***

チクメイ ミヤコタチク トチクカクセイリシキヨウ

セイリ NO. 130BL(2)-1 ✓

NO.	NO.	ANGLE	AZIMUTH	LENGTH	DX	*	DY	*	X	Y.	DMD	2A	カ-フメンセキ
130BL-32	130BL-51 ✓		146 2 17						-131473.367	-69095.555			
130BL-51	130BL-49 ✓	102 57 6	68 59 23 ✓	17.602 ✓	6.311	0	16.432	0	-131467.056	-69079.123	26.661	168.257571	
130BL-49	130BL-44 ✓	124 8 20	13 7 43 ✓	22.431 ✓	21.845	0	5.095	0	-131445.211	-69074.028	48.188	1052.666860	
130BL-44	130BL-7 ✓	79 54 43	273 2 26 ✓	12.000 ✓	0.637	0	-11.983	0	-131444.574	-69086.011	41.300	26.308100	
130BL-7	130BL-32 ✓	142 25 38	235 28 4 ✓	24.002 ✓	-13.606	0	-19.773	0	-131458.180	-69105.784	9.544	-129.855664	
130BL-32	130BL-51 ✓	90 34 13	146 2 17 ✓	18.310 ✓	-15.186	-1	10.229	0	-131473.367	-69095.555	0.000	0.000000	
TOTAL..	ソツカクスウ= 5	540	0 0	94.345	0.001	-1 ✓	0.000	0 ✓			ハイメンセキ=	1117.376867	

1/2= 558.68 +0.00
 メンセキ= 558.68 ✓
 + 0.01 ✓
 558.69 ✓

セイリ NO. 130BL(2)-2 ✓

130BL-44	130BL-49 ✓		193 7 43						-131467.056	-69079.123			
130BL-49	130BL-50 ✓	67 45 49	80 53 32 ✓	21.248 ✓	3.363	0	20.980	0	-131463.693	-69058.143	15.885	53.421255	
130BL-50	130BL-48 ✓	98 25 11	359 18 43 ✓	17.652 ✓	17.651	-1	-0.212	0	-131446.043	-69058.355	36.653	646.925450	
130BL-48	130BL-44 ✓	93 43 43	273 2 26 ✓	15.695 ✓	0.833	-1	-15.673	0	-131445.211	-69074.028	20.768	17.278976	
130BL-44	130BL-49 ✓	100 5 17	193 7 43 ✓	22.431 ✓	-21.845	0	-5.095	0	-131467.056	-69079.123	0.000	0.000000	
TOTAL..	ソツカクスウ= 4	360	0 0	77.026	0.002	-2 ✓	0.000	0 ✓			ハイメンセキ=	717.625681	

1/2= 358.81 +0.00
 メンセキ= 358.81 ✓

*** メンセキ ケイサン (ハイオウキヨホウ) ***

チクメイ ... ミヤコタチク トチクカクセイリシキヨウ

セリ NO... 130BL(2)-3 ✓

NO.	NO.	ANGLE	AZIMUTH	LENGTH	DX	*	DY	*	X	Y	DMD	2A	カーブメンセキ
130BL-48	130BL-47 ✓		179 18 43						-131481.343	-69057.931			
130BL-47	130BL-22 ✓	68 3 5	67 21 48 ✓	9.840 ✓	3.787	1	9.082	0	-131477.555	-69048.849	9.506	36.008728	
130BL-22	130BL-24 ✓	115 40 38	3 2 26 ✓	30.964 ✓	30.920	0	1.642	1	-131446.635	-69047.206	20.231	625.542520	
130BL-24	130BL-48 ✓	90 0 0	273 2 26 ✓	11.165 ✓	0.592	0	-11.149	0	-131446.043	-69058.355	10.725	6.349200	
130BL-48	130BL-47 ✓	86 16 17	179 18 43 ✓	35.303 ✓	-35.300	0	0.424	0	-131481.343	-69057.931	0.000	0.000000	
TOTAL...	ソツカクスク= 4	360 0 0		87.272	-0.001	1 ✓	-0.001	1 ✓			ハイメンセキ=	667.900448	
											1/2=	333.95	+0.00
											メンセキ=	333.95 ✓	

セリ NO... 130BL(2)-4 ✓

130BL-49	130BL-41 ✓		152 13 25						-131486.015	-69069.137			
130BL-41	130BL-47 ✓	95 8 23	67 21 48 ✓	12.141 ✓	4.673	-1	11.206	0	-131481.343	-69057.931	21.192	99.009024	
130BL-47	130BL-50 ✓	111 56 55	359 18 43 ✓	17.651 ✓	17.650	0	-0.212	0	-131463.693	-69058.143	32.186	568.082900	
130BL-50	130BL-49 ✓	81 34 49	260 53 32 ✓	21.248 ✓	-3.363	0	-20.980	0	-131467.056	-69079.123	10.994	-36.972822	
130BL-49	130BL-41 ✓	71 19 53	152 13 25 ✓	21.428 ✓	-18.959	0	9.986	0	-131486.015	-69069.137	0.000	0.000000	
TOTAL...	ソツカクスク= 4	360 0 0		72.468	0.001	-1 ✓	0.000	0 ✓			ハイメンセキ=	630.119102	
											1/2=	315.05	+0.00
											メンセキ=	315.05 ✓	

*** メンセキ ケイサン (ハ"イオウキヨホウ) ***

チクメイ ... ミヤコタ"チク トチクカクセイリヨ"キ"ヨウ

セリ NO... 130BL(2)-5 ✓

NO.	INO.	ANGLE	AZIMUTH	LENGTH	DX	*	DY	*	X	Y	DMD	2A	カ-フ"メンセキ
130BL-51	130BL- 1 ✓		146 2 17						-131489.174	-69084.908			
130BL- 1	130BL- 2 ✓	140 36	2 106 38 19 ✓	4.984 ✓	-1.427	0	4.775	0	-131490.601	-69080.133	15.422	-22.007194	
130BL- 2	130BL-41 ✓	140 43 29	67 21 48 ✓	11.914 ✓	4.586	0	10.996	0	-131486.015	-69069.137	31.193	143.051098	
130BL-41	130BL-49 ✓	84 51 37	332 13 25 ✓	21.428 ✓	18.959	0	-9.986	0	-131467.056	-69079.123	32.203	610.536677	
130BL-49	130BL-51 ✓	96 45 58	248 59 23 ✓	17.602 ✓	-6.311	0	-16.432	0	-131473.367	-69095.555	5.785	-36.509135	
130BL-51	130BL- 1 ✓	77 2 54	146 2 17 ✓	19.059 ✓	-15.808	1	10.647	0	-131489.174	-69084.908	0.000	0.000000	
TOTAL..	ソツカクスウ= 5	540 0 0		74.987	-0.001	1 ✓	0.000	0 ✓					
											ハ"イメンセキ=	695.071446	
											1/2=	347.53	+0.00
											メンセキ=	347.53 ✓	

*** メンセキ ケイサン (ハイオウキヨホウ) ***

チクメイ ... ミヤコタチク トチクカクセイリシキヨウ

ペリ NO... 130BL(4) ✓

NO.	NO.	ANGLE	AZIMUTH	LENGTH	DX	*	DY	*	X	Y	DMD	ZA	カ-フメンセキ
130BL-35	130BL-21		143 29 5						-131481.616	-69058.586			
130BL-21	130BL-22	103 52 43	67 21 48 ✓	10.550 ✓	4.061	0	9.737	0	-131477.555	-69048.849	19.582	79.522502	
130BL-22	130BL-39	115 40 38	5 2 26 ✓	16.714 ✓	16.690	0	0.887	0	-131460.865	-69047.962	30.206	504.138140	
130BL-39	130BL-38	90 0 0	273 2 26 ✓	15.093 ✓	0.801	-1	-15.072	0	-131460.065	-69063.034	16.021	12.816800	
130BL-38	130BL-35	120 8 31	213 10 57 ✓	9.861 ✓	-8.253	0	-5.397	0	-131468.318	-69068.431	-4.448	36.709344	
130BL-35	130BL-21	110 18 8	143 29 5 ✓	16.546 ✓	-13.298	0	9.845	0	-131481.616	-69058.586	0.000	0.000000	
TOTAL..	ソツカクスウ= 5	540	0 0	68.764	0.001	-1 ✓	0.000	0 ✓			ハイメンセキ=	633.186786	
											1/2=	316.59	+0.00
											メンセキ=	316.59 ✓	

ペリ NO... 130BL(5)-1 ✓

130BL-24	130BL-40		183 2 26						-131458.682	-69047.846			
130BL-40	130BL-23	90 0 0	93 2 26 ✓	18.363 ✓	-0.974	0	18.337	0	-131459.656	-69029.509	17.697	-17.236878	
130BL-23	130BL-5	103 43 13	16 45 39 ✓	8.385 ✓	8.029	0	2.418	0	-131451.627	-69027.091	38.452	308.731108	
130BL-5	130BL-6	128 3 39	324 49 18 ✓	4.987 ✓	4.076	0	-2.873	0	-131447.551	-69029.964	37.997	154.875772	
130BL-6	130BL-24	128 13 8	273 2 26 ✓	17.266 ✓	0.916	0	-17.242	0	-131446.635	-69047.206	17.882	16.379912	
130BL-24	130BL-40	90 0 0	183 2 26 ✓	12.064 ✓	-12.047	0	-0.640	0	-131458.682	-69047.846	0.000	0.000000	
TOTAL..	ソツカクスウ= 5	540	0 0	61.065	0.000	0 ✓	0.000	0 ✓			ハイメンセキ=	462.749914	
											1/2=	231.37	+0.00
											メンセキ=	231.37 ✓	

*** メンセキ ケイザン (ハイオウキヨホウ) ***

チクメイ ... ミヤコタチク トチクカクセイリシキヨウ

セイリ NO... 130BL ~~(3)-2~~ ⁽⁵⁾⁻² ✓

NO.	NO.	ANGLE	AZIMUTH	LENGTH	DX	*	DY	*	X	Y	DMD	2A	カ-クメンセキ
130BL-40	130BL-22 ✓		183 2 26						-131477.555	-69048.849			
130BL-22	130BL-3 ✓	64 19 22	67 21 48 ✓	14.509 ✓	5.584	0	13.391	0	-131471.971	-69035.458	12.388	69.174592	
130BL-3	130BL-4 ✓	154 47 5	42 8 53 ✓	5.003 ✓	3.709	0	3.357	0	-131468.262	-69032.101	29.136	108.065424	
130BL-4	130BL-23 ✓	154 36 46	16 45 39 ✓	8.988 ✓	8.606	0	2.592	0	-131459.656	-69029.509	35.085	301.941510	
130BL-23	130BL-40 ✓	76 16 47 273	2 26 ✓	18.363 ✓	0.974	0	-18.337	0	-131458.682	-69047.846	19.340	18.837160	
130BL-40	130BL-22 ✓	90 0 0	183 2 26 ✓	18.900 ✓	-18.873	0	-1.003	0	-131477.555	-69048.849	0.000	0.000000	
TOTAL..	ソツカクスク= 5	540 0 0		65.763	0.000	0 ✓	0.000	0 ✓				ハイメンセキ= 498.018686	
											1/2=	249.00	+0.00
											メンセキ=	249.00 ✓	