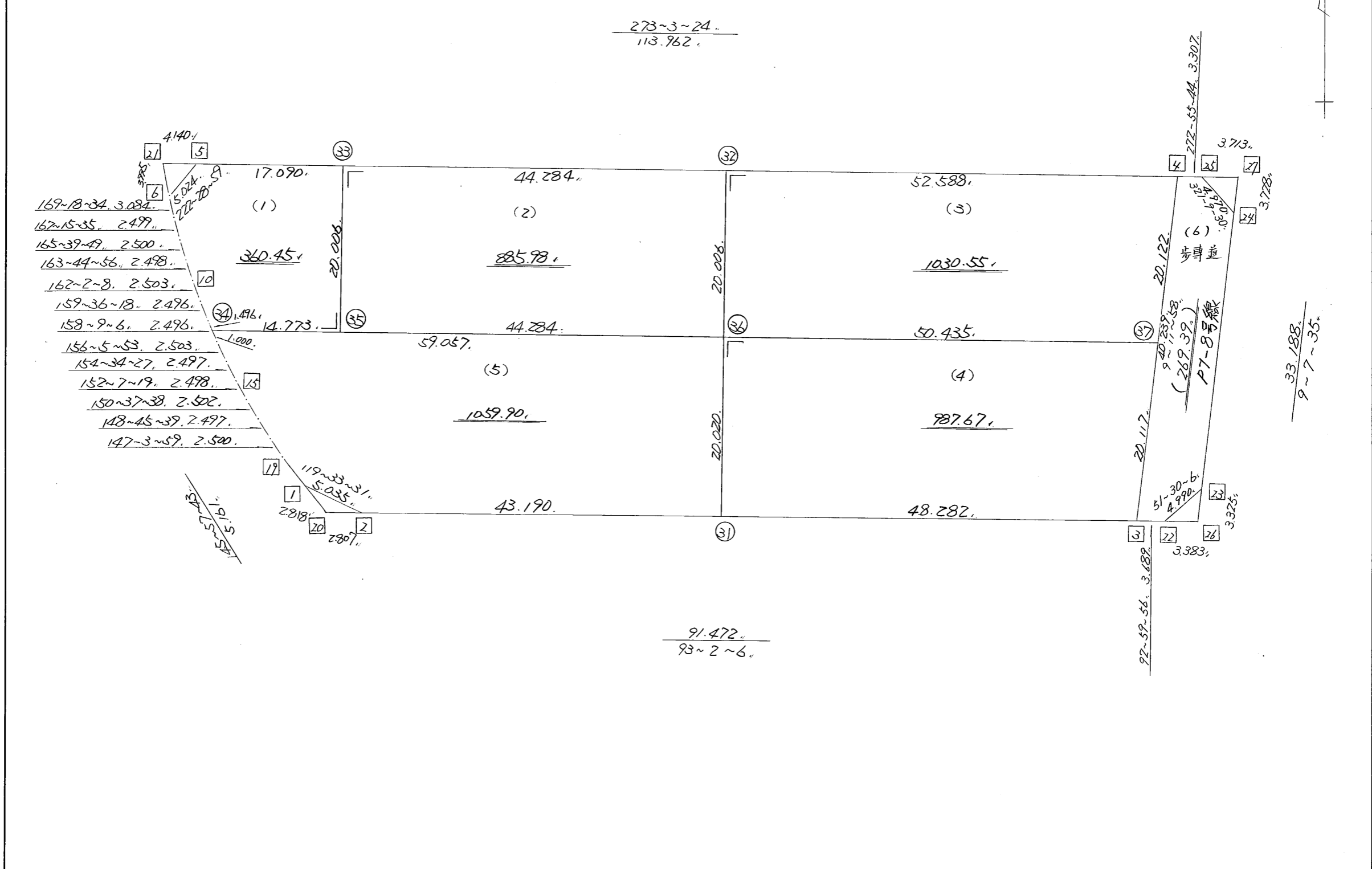


略 図

街区面積 = $\frac{4324.156}{m^2}$
 画地面積 = $\frac{4324.156}{m^2}$
 (歩道 = 269.39)



$\frac{33.188}{9 \sim 7 \sim 35}$

街区点番号 1 ~ 27 筆界点番号 (31) ~ (37) 画地番号 (1) ~ (6)

*** メンセキ ケイサン (ハイオウキヨボウ) ***

チクメイ ... ミヤコタチク トチクカクセイリシキヨウ

セイリ NO... 125BL

NO.	NO.	ANGLE	AZIMUTH	LENGTH	DX	*	DY	*	X	Y	DMD	2A	カ-フ-メンセキ
125BL-19	125BL- 1		145 57 43						-131330.468	-69155.665			
125BL- 1	125BL- 2	153 35 48	119 33 31	5.035	-2.484	0	4.380	0	-131332.952	-69151.285	7.269	-18.056196	
125BL- 2	125BL- 3	153 28 35	93 2 6	91.472	-4.843	0	91.344	0	-131337.795	-69059.941	102.993	-498.795099	
125BL- 3	125BL- 4	96 9 52	9 11 58	40.239	39.721	0	6.433	0	-131298.074	-69053.508	200.770	7974.785170	
125BL- 4	125BL- 5	83 51 26	273 3 24	113.962	6.077	0	-113.800	0	-131291.997	-69167.308	93.403	567.610031	
125BL- 5	125BL- 6	129 25 35	222 28 59	5.024	-3.705	0	-3.393	0	-131295.702	-69170.701	-23.790	88.141950	
125BL- 6	125BL- 7	126 49 35	169 18 34	3.084	-3.030	0	0.572	0	-131298.732	-69170.129	-26.611	80.631330	
125BL- 7	125BL- 8	177 57 1	167 15 35	2.499	-2.437	0	0.551	0	-131301.169	-69169.578	-25.488	62.114256	
125BL- 8	125BL- 9	178 24 14	165 39 49	2.500	-2.422	0	0.619	0	-131303.591	-69168.959	-24.318	58.898196	
125BL- 9	125BL-10	178 5 7	163 44 56	2.498	-2.398	0	0.699	0	-131305.989	-69168.260	-23.000	55.154000	
125BL-10	125BL-11	178 17 12	162 2 8	2.503	-2.381	0	0.772	0	-131308.370	-69167.488	-21.529	51.260549	
125BL-11	125BL-12	177 34 10	159 36 18	2.496	-2.340	0	0.870	0	-131310.710	-69166.618	-19.887	46.535580	
125BL-12	125BL-13	178 32 48	158 9 6	2.496	-2.317	0	0.929	0	-131313.027	-69165.689	-18.088	41.909896	
125BL-13	125BL-14	177 56 47	156 5 53	2.503	-2.288	0	1.014	0	-131315.315	-69164.675	-16.145	36.939760	
125BL-14	125BL-15	178 28 34	154 34 27	2.497	-2.255	0	1.072	0	-131317.570	-69163.603	-14.059	31.703045	
125BL-15	125BL-16	177 32 52	152 7 19	2.498	-2.208	0	1.168	0	-131319.778	-69162.435	-11.819	26.096352	
125BL-16	125BL-17	178 30 19	150 37 38	2.502	-2.180	0	1.227	0	-131321.958	-69161.208	-9.424	20.544320	
125BL-17	125BL-18	178 8 1	148 45 39	2.497	-2.135	0	1.295	0	-131324.093	-69159.913	-6.902	14.735770	
125BL-18	125BL-19	178 18 20	147 3 59	2.500	-2.098	0	1.359	0	-131326.191	-69158.554	-4.248	8.912304	
125BL-19	125BL- 1	178 53 44	145 57 43	5.161	-4.277	0	2.889	0	-131330.468	-69155.665	0.000	0.000000	
TOTAL..	ソツカクスク= 19	3060	0 0	293.966	0.000	0	0.000	0			ハイメンセキ=	8649.121214	
											1/2=	4324.56	+0.00
											メンセキ=	4324.56	

*** メンセキ ケイサン (ハイイウキヨホウ) ***

チクメイ ... ミヤコタチク トチクカクセイリシキヨウ

											セリ NO... 125BL(1) ✓		
NO.	NO.	ANGLE	AZIMUTH	LENGTH	DX	*	DY	*	X	Y	DMD	2A	カ-フメンセキ
125BL-12	125BL-34 ✓		158 9 6						-131312.099	-69166.061			
125BL-34	125BL-35 ✓	114 54 18	93 3 24 ✓	14.773 ✓	-0.788	0	14.752	0	-131312.887	-69151.309	15.309	-12.063492	
125BL-35	125BL-33 ✓	90 0 0	3 3 24 ✓	20.006 ✓	19.978	1	1.067	0	-131292.908	-69150.242	31.128	621.906312	
125BL-33	125BL- 5 ✓	90 0 0	273 3 24 ✓	17.090 ✓	0.911	0	-17.066	0	-131291.997	-69167.308	15.129	13.782519	
125BL- 5	125BL- 6 ✓	129 25 35	222 28 59 ✓	5.024 ✓	-3.705	0	-3.393	0	-131295.702	-69170.701	-5.330	19.747650	
125BL- 6	125BL- 7 ✓	126 49 35	169 18 34 ✓	3.084 ✓	-3.030	0	0.572	0	-131298.732	-69170.129	-8.151	24.697530	
125BL- 7	125BL- 8 ✓	177 57 1	167 15 35 ✓	2.499 ✓	-2.437	0	0.551	0	-131301.169	-69169.578	-7.028	17.127236	
125BL- 8	125BL- 9 ✓	178 24 14	165 39 49 ✓	2.500 ✓	-2.422	0	0.619	0	-131303.591	-69168.959	-5.858	14.188076	
125BL- 9	125BL-10 ✓	178 5 7	163 44 56 ✓	2.498 ✓	-2.398	0	0.699	0	-131305.989	-69168.260	-4.540	10.886920	
125BL-10	125BL-11 ✓	178 17 12	162 2 8 ✓	2.503 ✓	-2.381	0	0.772	0	-131308.370	-69167.488	-3.069	7.307289	
125BL-11	125BL-12 ✓	177 34 10	159 36 18 ✓	2.496 ✓	-2.340	0	0.870	0	-131310.710	-69166.618	-1.427	3.339180	
125BL-12	125BL-34 ✓	178 32 48	158 9 6 ✓	1.496 ✓	-1.389	0	0.557	0	-131312.099	-69166.061	0.000	0.000000	
TOTAL..	ソツカクスウ= 11	1620	0 0	73.969	-0.001	1 ✓	0.000	0 ✓			ハイイウキヨホウ=	720.919220	
											1/2=	360.45	+0.00
											メンセキ=	360.45 ✓	

											セリ NO... 125BL(2) ✓		
125BL-33	125BL-35 ✓		183 3 24						-131312.887	-69151.309			
125BL-35	125BL-36 ✓	90 0 0	93 3 24 ✓	44.284 ✓	-2.361	0	44.221	0	-131315.248	-69107.088	43.154	-101.886594	
125BL-36	125BL-32 ✓	90 0 0	3 3 24 ✓	20.006 ✓	19.978	0	1.067	0	-131295.270	-69106.021	88.442	1766.894276	
125BL-32	125BL-33 ✓	90 0 0	273 3 24 ✓	44.284 ✓	2.361	1	-44.221	0	-131292.908	-69150.242	45.288	106.970256	
125BL-33	125BL-35 ✓	90 0 0	183 3 24 ✓	20.006 ✓	-19.978	-1	-1.067	0	-131312.887	-69151.309	0.000	0.000000	
TOTAL..	ソツカクスウ= 4	360	0 0	128.580	0.000	0 ✓	0.000	0 ✓			ハイイウキヨホウ=	1771.977938	
											1/2=	885.98	+0.00
											メンセキ=	885.98 ✓	

*** メンセキ ケイザン (ハイオウキヨホウ) ***

チクメイ ... ミヤコタチク トチクカクセイリシキヨウ

レイ NO... 125BL(3) ✓

NO.	NO.	ANGLE	AZIMUTH	LENGTH	DX	*	DY	*	X	Y	DMD	2A	カーブメンセキ
125BL-32	125BL-36 ✓		183 3 24						-131315.248	-69107.088			
125BL-36	125BL-37 ✓	90 0 0	93 3 24 ✓	50.435 ✓	-2.689	0	50.363	0	-131317.937	-69056.725	49.296	-132.556944	
125BL-37	125BL-4 ✓	96 8 34	9 11 58 ✓	20.122 ✓	19.863	0	3.217	0	-131298.074	-69053.508	102.876	2043.425988	
125BL-4	125BL-32 ✓	83 51 26	273 3 24 ✓	52.588 ✓	2.804	0	-52.513	0	-131295.270	-69106.021	53.580	150.238320	
125BL-32	125BL-36 ✓	90 0 0	183 3 24 ✓	20.006 ✓	-19.978	0	-1.067	0	-131315.248	-69107.088	0.000	0.000000	
TOTAL..	ソツカクスウ= 4	360 0 0		143.151	0.000	0 ✓	0.000	0 ✓			ハイメンセキ=	2061.107364	
											1/2=	1030.55	+0.00
											メンセキ=	1030.55 ✓	

レイ NO... 125BL(4) ✓

125BL-36	125BL-31 ✓		183 3 24						-131335.239	-69108.156			
125BL-31	125BL-3 ✓	89 58 42	93 2 6 ✓	48.282 ✓	-2.556	0	48.214	1	-131337.795	-69059.941	47.147	-120.507732	
125BL-3	125BL-37 ✓	96 9 52	9 11 58 ✓	20.117 ✓	19.858	0	3.216	0	-131317.937	-69056.725	98.578	1957.561924	
125BL-37	125BL-36 ✓	83 51 26	273 3 24 ✓	50.435 ✓	2.689	0	-50.363	0	-131315.248	-69107.088	51.431	138.297959	
125BL-36	125BL-31 ✓	90 0 0	183 3 24 ✓	20.020 ✓	-19.992	1	-1.068	0	-131335.239	-69108.156	0.000	0.000000	
TOTAL..	ソツカクスウ= 4	360 0 0		138.854	-0.001	1 ✓	-0.001	1 ✓			ハイメンセキ=	1975.352151	
											1/2=	987.67	+0.00
											メンセキ=	987.67 ✓	

*** メンセキ ケイサン (ハイオウキヨホウ) ***

チクメイ ... ミヤコタチク トチクカクセイリシキヨウ

セリ NO... 125BL(5)

NO.	NO.	ANGLE	AZIMUTH	LENGTH	DX	*	DY	*	X	Y	DMD	2A	カ-フメンセキ
125BL-19	125BL- 1 ✓		145 57 43						-131330.468	-69155.665			
125BL- 1	125BL- 2 ✓	153 35 48	119 33 31 ✓	5.035 ✓	-2.484	0	4.380	0	-131332.952	-69151.285	7.269	-18.056196	
125BL- 2	125BL-31 ✓	153 28 35	93 2 6 ✓	43.190 ✓	-2.287	0	43.129	0	-131335.239	-69108.156	54.778	-125.277286	
125BL-31	125BL-36 ✓	90 1 18	3 3 24 ✓	20.020 ✓	19.992	-1	1.068	0	-131315.248	-69107.088	98.975	1978.609225	
125BL-36	125BL-34 ✓	90 0 0	273 3 24 ✓	59.057 ✓	3.149	0	-58.973	0	-131312.099	-69166.061	41.070	129.329430	
125BL-34	125BL-13 ✓	65 5 42	158 9 6 ✓	1.000 ✓	-0.928	0	0.372	0	-131313.027	-69165.689	-17.531	16.268768	
125BL-13	125BL-14 ✓	177 56 47	156 5 53 ✓	2.503 ✓	-2.288	0	1.014	0	-131315.315	-69164.675	-16.145	36.939760	
125BL-14	125BL-15 ✓	178 28 34	154 34 27 ✓	2.497 ✓	-2.255	0	1.072	0	-131317.570	-69163.603	-14.059	31.703045	
125BL-15	125BL-16 ✓	177 32 52	152 7 19 ✓	2.498 ✓	-2.208	0	1.168	0	-131319.778	-69162.435	-11.819	26.096352	
125BL-16	125BL-17 ✓	178 30 19	150 37 38 ✓	2.502 ✓	-2.180	0	1.227	0	-131321.958	-69161.208	-9.424	20.544320	
125BL-17	125BL-18 ✓	178 8 1	148 45 39 ✓	2.497 ✓	-2.135	0	1.295	0	-131324.093	-69159.913	-6.902	14.735770	
125BL-18	125BL-19 ✓	178 18 20	147 3 59 ✓	2.500 ✓	-2.098	0	1.359	0	-131326.191	-69158.554	-4.248	8.912304	
125BL-19	125BL- 1 ✓	178 53 44	145 57 43 ✓	5.161 ✓	-4.277	0	2.889	0	-131330.468	-69155.665	0.000	0.000000	
TOTAL...	ソツカクスク= 12	1800	0 0	148.460	0.001	-1 ✓	0.000	0 ✓			ハイメンセキ=	2119.805492	
											1/2=	1059.90	+0.00
											メンセキ=	1059.90 ✓	

*** メンセキ ケイサン (ハイオウキヨホウ) ***

チクメイ ミヤコダチク トチクカクセイリシキヨウ

セイリ NO. 125BL(6)✓

NO.	NO.	ANGLE	AZIMUTH	LENGTH	DX	*	DY	*	X	Y	DMD	2A	カ-フメンセキ
125BL- 4	125BL- 3✓		189 11 58						-131337.795	-69059.941			
125BL- 3	125BL-22✓	83 47 58	92 59 56✓	3.689✓	-0.193	0	3.684	0	-131337.988	-69056.257	-2.749	0.530557	
125BL-22	125BL-23✓	138 30 10	51 30 6✓	4.990✓	3.106	0	3.905	0	-131334.882	-69052.352	4.840	15.033040	
125BL-23	125BL-24✓	137 37 29	9 7 35✓	33.188✓	32.768	0	5.264	0	-131302.114	-69047.088	14.009	459.046912	
125BL-24	125BL-25✓	132 1 55	321 9 30✓	4.970✓	3.871	0	-3.117	0	-131298.243	-69050.205	16.156	62.539876	
125BL-25	125BL- 4✓	131 46 14	272 55 44✓	3.307✓	0.169	0	-3.303	0	-131298.074	-69053.508	9.736	1.645384	
125BL- 4	125BL- 3✓	96 16 14	189 11 58✓	40.239✓	-39.721	0	-6.433	0	-131337.795	-69059.941	0.000	0.000000	
TOTAL..	ソツカクスウ= 6	720 0 0		90.383	0.000	0✓	0.000	0✓			ハイメンセキ=	538.795769	
											1/2=	269.39	+0.00
											メンセキ=	269.39✓	

*** ケツコウ トラハース ***

チクメイ ... ミヤコダチク トチクカクセイリヨキヨウ

NO.	NO.	ANGLE	*	AZIMUTH	LENGTH	DX	*	DY	*	X	Y	NO.
	125BL- 2 ✓									-131332.952	-69151.285	125BL- 2
125BL- 2	125BL-31 ✓			93 2 6 ✓	43.190 ✓	-2.287	0	43.129	0	-131335.239	-69108.156	125BL-31
125BL-31	125BL- 3 ✓	180 0 0		93 2 6 ✓	48.282 ✓	-2.556	0	48.214	1	-131337.795	-69059.941	125BL- 3
	TOTAL..	180 0 0			91.472 /	-4.843	0 ✓	91.343	1 ✓			
	125BL- 3 ✓									-131337.795	-69059.941	125BL- 3
125BL- 3	125BL-37 ✓			9 11 58 ✓	20.117 ✓	19.858	0	3.216	0	-131317.937	-69056.725	125BL-37
125BL-37	125BL- 4 ✓	180 0 0		9 11 58 ✓	20.122 ✓	19.863	0	3.217	0	-131298.074	-69053.508	125BL- 4
	TOTAL..	180 0 0			40.239 //	39.721	0 /	6.433	0 /			
	125BL- 4 ✓									-131298.074	-69053.508	125BL- 4
125BL- 4	125BL-32 ✓			273 3 24 ✓	52.588 ✓	2.804	0	-52.513	0	-131295.270	-69106.021	125BL-32
125BL-32	125BL-33 ✓	180 0 0		273 3 24 ✓	44.284 ✓	2.361	1	-44.221	0	-131292.908	-69150.242	125BL-33
125BL-33	125BL- 5 ✓	180 0 0		273 3 24 ✓	17.090 ✓	0.911	0	-17.066	0	-131291.997	-69167.308	125BL- 5
	TOTAL..	360 0 0			113.962 ✓	6.076	1 /	-113.800	0 /			
	125BL-12 ✓									-131310.710	-69166.618	125BL-12
125BL-12	125BL-34 ✓			158 9 6 ✓	1.496 ✓	-1.389	0	0.557	0	-131312.099	-69166.061	125BL-34
125BL-34	125BL-13 ✓	180 0 0		158 9 6 ✓	1.000 ✓	-0.928	0	0.372	0	-131313.027	-69165.689	125BL-13
	TOTAL..	180 0 0			2.496 //	-2.317	0 /	0.929	0 /			
	125BL-34 ✓									-131312.099	-69166.061	125BL-34
125BL-34	125BL-35 ✓			93 3 24 ✓	14.773 ✓	-0.788	0	14.752	0	-131312.887	-69151.309	125BL-35
125BL-35	125BL-36 ✓	180 0 0		93 3 24 ✓	44.284 ✓	-2.361	0	44.221	0	-131315.248	-69107.088	125BL-36

*** ケツコウ トラハース ***

チクメイ ... ミヤコタチク トチクカクセイリヨキヨウ

NO.	NO.	ANGLE	*	AZIMUTH	LENGTH	DX	*	DY	*	X	Y	NO.
125BL-36	125BL-37 ✓	180 0 0		93 3 24 ✓	50.435 ✓	-2.689	0	50.363	0	-131317.937	-69056.725	125BL-37
	TOTAL..	360 0 0			109.492 ✓	-5.838	0 ✓	109.336	0 ✓			
	125BL-34 ✓									-131312.099	-69166.061	125BL-34
125BL-34	125BL-36 ✓			93 3 24 ✓	59.057 ✓	-3.149	0	58.973	0	-131315.248	-69107.088	125BL-36
125BL-36	125BL-37 ✓	180 0 0		93 3 24 ✓	50.435 ✓	-2.689	0	50.363	0	-131317.937	-69056.725	125BL-37
	TOTAL..	180 0 0			109.492 ✓	-5.838	0 ✓	109.336	0 ✓			
	125BL-31 ✓									-131335.239	-69108.156	125BL-31
125BL-31	125BL-36 ✓			3 3 24 ✓	20.020 ✓	19.992	-1	1.068	0	-131315.248	-69107.088	125BL-36
125BL-36	125BL-32 ✓	180 0 0		3 3 24 ✓	20.006 ✓	19.978	0	1.067	0	-131295.270	-69106.021	125BL-32
	TOTAL..	180 0 0			40.026 ✓	39.970	-1 ✓	2.135	0 ✓			