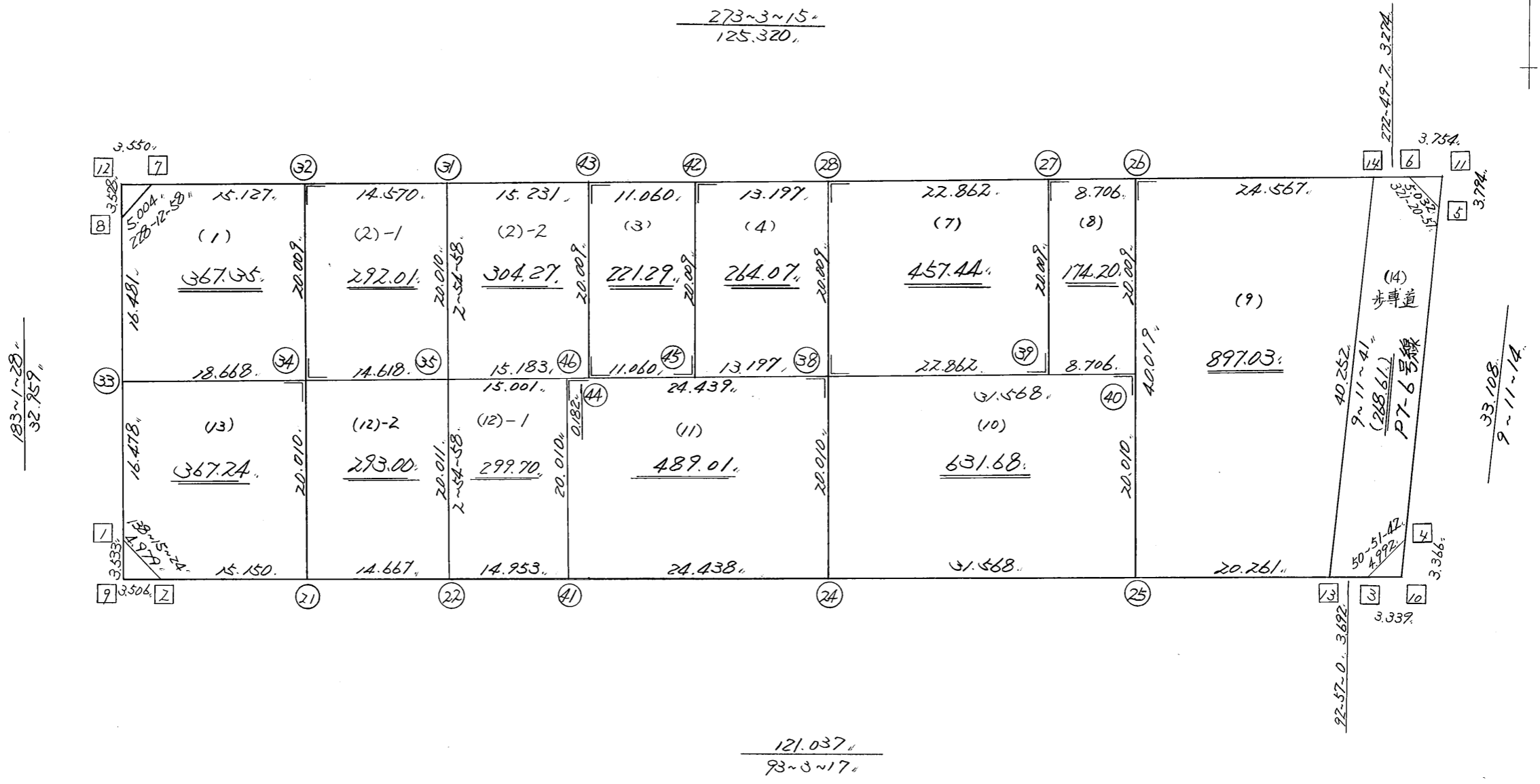


略 図

街区面積 = 5058.421 m²
 画地面積 = 5058.219 m²
 (歩道 = 268.61)



街区点番号 7 ~ 14 筆界点番号 21 ~ 46 画地番号 (1) ~ (14)

*** メンセキ ケイサン (ハイオウキヨホウ) ***

チクメイ ... ミヤコタチク トチクカクセイリシキヨウ

NO.	NO.	ANGLE	AZIMUTH	LENGTH	DX	*	DY	*	X	Y	DMD	2A	カ-フ-メンセキ
121BL- 8	121BL- 1✓		183 1 28						-131236.297	-69169.352			
121BL- 1	121BL- 2✓	135 13 56	138 15 24✓	4.979✓	-3.715	0	3.315	0	-131240.012	-69166.037	1.576	-5.854840	
121BL- 2	121BL-13✓	134 47 53	93 3 17✓	121.037✓	-6.450	0	120.865	0	-131246.462	-69045.172	125.756	-811.126200	
121BL-13	121BL-14✓	96 8 24	9 11 41✓	40.252✓	39.735	0	6.432	0	-131206.727	-69038.740	253.053	10055.060955	
121BL-14	121BL- 7✓	83 51 34	273 3 15✓	125.320✓	6.677	0	-125.142	0	-131200.050	-69163.882	134.343	897.008211	
121BL- 7	121BL- 8✓	135 9 43	228 12 58✓	5.004✓	-3.334	0	-3.731	0	-131203.384	-69167.613	5.470	-18.236980	
121BL- 8	121BL- 1✓	134 48 30	183 1 28✓	32.959✓	-32.913	0	-1.739	0	-131236.297	-69169.352	0.000	0.000000	
TOTAL..	ソツカクスク= 6	720 0 0		329.551	0.000	0✓	0.000	0✓			ハイメンセキ=	10116.851146	
											1/2=	5058.42	+0.00
											メンセキ=	5058.42✓	

*** メンセキ ケイサン (ハイオウキヨホウ) ***

チクメイ ... ミヤコタチク トチクカクセイリシキヨウ

セリ NO... 121BL(1)✓

NO.	NO.	ANGLE	AZIMUTH	LENGTH	DX	*	DY	*	X	Y	DMD	2A	カ-フメンセキ
121BL- 8	121BL-33✓		183 1 28						-131219.842	-69168.483			
121BL-33	121BL-34✓	90 1 47	93 3 15✓	18.668✓	-0.995	0	18.641	0	-131220.837	-69149.842	17.771	-17.682145	
121BL-34	121BL-32✓	90 0 0	3 3 15✓	20.009✓	19.981	0	1.066	0	-131200.856	-69148.776	37.478	748.847918	
121BL-32	121BL- 7✓	90 0 0	273 3 15✓	15.127✓	0.806	0	-15.106	0	-131200.050	-69163.882	23.438	18.891028	
121BL- 7	121BL- 8✓	135 9 43	228 12 58✓	5.004✓	-3.334	0	-3.731	0	-131203.384	-69167.613	4.601	-15.339734	
121BL- 8	121BL-33✓	134 48 30	183 1 28✓	16.481✓	-16.458	0	-0.870	0	-131219.842	-69168.483	0.000	0.000000	
TOTAL..	ソツカクスウ= 5	540 0 0		75.289	0.000	0✓	0.000	0✓			ハイメンセキ=	734.717067	
											1/2=	367.35	+0.00
											メンセキ=	367.35✓	

セリ NO... 121BL(2)-1✓

121BL-32	121BL-34✓		183 3 15						-131220.837	-69149.842			
121BL-34	121BL-35✓	90 0 0	93 3 15✓	14.618✓	-0.779	0	14.597	0	-131221.616	-69135.245	13.531	-10.540649	
121BL-35	121BL-31✓	89 51 43	2 54 58✓	20.010✓	19.984	0	1.018	0	-131201.632	-69134.227	29.146	582.453664	
121BL-31	121BL-32✓	90 8 17	273 3 15✓	14.570✓	0.776	0	-14.549	0	-131200.856	-69148.776	15.615	12.117240	
121BL-32	121BL-34✓	90 0 0	183 3 15✓	20.009✓	-19.981	0	-1.066	0	-131220.837	-69149.842	0.000	0.000000	
TOTAL..	ソツカクスウ= 4	360 0 0		69.207	0.000	0✓	0.000	0✓			ハイメンセキ=	584.030255	
											1/2=	292.01	+0.00
											メンセキ=	292.01✓	

*** メンセキ ケイサン (ハイオウキヨホウ) ***

チクメイ ... ミヤコタチク トチクカクセイリシキヨウ

												セリ NO... 121BL(2)-2 ✓					
NO.	NO.	ANGLE			AZIMUTH			LENGTH	DX	*	DY	*	X	Y	DMD	2A	カ-フメンセキ
121BL-31	121BL-35 ✓				182	54	58						-131221.616	-69135.245			
121BL-35	121BL-44 ✓	90	8	17	93	3	15 ✓	15.183 ✓	-0.809	0	15.161	0	-131222.425	-69120.084	14.143	-11.441687	
121BL-44	121BL-43 ✓	90	0	0	3	3	15 ✓	20.009 ✓	19.981	0	1.066	0	-131202.444	-69119.018	30.370	606.822970	
121BL-43	121BL-31 ✓	90	0	0	273	3	15 ✓	15.231 ✓	0.812	0	-15.209	0	-131201.632	-69134.227	16.227	13.176324	
121BL-31	121BL-35 ✓	89	51	43	182	54	58 ✓	20.010 ✓	-19.984	0	-1.018	0	-131221.616	-69135.245	0.000	0.000000	
TOTAL...	ソツカクスウ= 4	360	0	0				70.433	0.000	0 ✓	0.000	0 ✓			ハイメンセキ=	608.557607	
															1/2=	304.27	+0.00
															メンセキ=	304.27 ✓	

												セリ NO... 121BL(3) ✓					
121BL-43	121BL-44 ✓				183	3	15						-131222.425	-69120.084			
121BL-44	121BL-45 ✓	90	0	0	93	3	15 ✓	11.060 ✓	-0.589	0	11.044	0	-131223.014	-69109.040	9.978	-5.877042	
121BL-45	121BL-42 ✓	90	0	0	3	3	15 ✓	20.009 ✓	19.981	0	1.066	0	-131203.033	-69107.974	22.088	441.340328	
121BL-42	121BL-43 ✓	90	0	0	273	3	15 ✓	11.060 ✓	0.589	0	-11.044	0	-131202.444	-69119.018	12.110	7.132790	
121BL-43	121BL-44 ✓	90	0	0	183	3	15 ✓	20.009 ✓	-19.981	0	-1.066	0	-131222.425	-69120.084	0.000	0.000000	
TOTAL...	ソツカクスウ= 4	360	0	0				62.138	0.000	0 ✓	0.000	0 ✓			ハイメンセキ=	442.596076	
															1/2=	221.29	+0.00
															メンセキ=	221.29 ✓	

*** ムンセキ ケイサン (ハイオウキヨホウ) ***

チクメイ ... ミカコタチク トチクカクセイリシキヨウ

セリ NO... 121BL(4) ✓

NO.	NO.	ANGLE	AZIMUTH	LENGTH	DX	*	DY	*	X	Y	DMD	2A	カ-クムンセキ
121BL-42	121BL-45 ✓		183 3 15						-131223.014	-69109.040			
121BL-45	121BL-38 ✓	90 0 0	93 3 15 ✓	13.197 ✓	-0.703	0	13.178	1	-131223.717	-69095.861	12.113	-8.515439	
121BL-38	121BL-28 ✓	90 0 0	3 3 15 ✓	20.009 ✓	19.981	0	1.066	0	-131203.736	-69094.795	26.358	526.659198	
121BL-28	121BL-42 ✓	90 0 0	273 3 15 ✓	13.197 ✓	0.703	0	-13.178	-1	-131203.033	-69107.974	14.245	10.014235	
121BL-42	121BL-45 ✓	90 0 0	183 3 15 ✓	20.009 ✓	-19.981	0	-1.066	0	-131223.014	-69109.040	0.000	0.000000	
TOTAL...	ソツカクスウ= 4	360 0 0		66.412	0.000	0 ✓	0.000	0 ✓			ハイムンセキ=	528.157994	
											1/2=	264.07	+0.00
											ムンセキ=	264.07 ✓	

セリ NO... 121BL(11) ✓

121BL-44	121BL-41 ✓		183 3 15						-131242.407	-69121.150			
121BL-41	121BL-24 ✓	90 0 2	93 3 17 ✓	24.257 ✓	-1.293	1	24.223	-1	-131243.699	-69096.928	23.156	-29.917552	
121BL-24	121BL-38 ✓	89 59 58	3 3 15 ✓	20.010 ✓	19.982	0	1.066	1	-131223.717	-69095.861	48.445	968.027990	
121BL-38	121BL-44 ✓	90 0 0	273 3 15 ✓	24.257 ✓	-1.292	0	-24.223	0	-131222.425	-69120.084	25.289	32.673388	
121BL-44	121BL-41 ✓	90 0 0	183 3 15 ✓	20.010 ✓	-19.982	0	-1.066	0	-131242.407	-69121.150	0.000	0.000000	
TOTAL...	ソツカクスウ= 4	360 0 0		88.534	-0.001	1 ✓	0.000	0 ✓			ハイムンセキ=	970.783826	
											1/2=	485.39	+0.00
											ムンセキ=	485.39 ✓	

*** メンセキ ケイザン (ハイオウキヨボウ) ***

チクメイ ... ミヤコダチク トチクカクセイリシキヨウ

セリ NO... 121BL(4)✓

NO.	NO.	ANGLE	AZIMUTH	LENGTH	DX	*	DY	*	X	Y	DMD	2A	カーブメンセキ
121BL-29	121BL-37✓		183 3 15						-131222.985	-69109.579			
121BL-37	121BL-38✓	90 0 0	93 3 15✓	13.737✓	-0.732	0	13.717	1	-131223.717	-69095.861	12.652	-9.261264	
121BL-38	121BL-28✓	90 0 0	3 3 15✓	20.009✓	19.981	0	1.066	0	-131203.736	-69094.795	27.436	548.198716	
121BL-28	121BL-29✓	90 0 0	273 3 15✓	13.737✓	-0.732	0	-13.717	-1	-131203.004	-69108.513	14.784	10.821888	
121BL-29	121BL-37✓	90 0 0	183 3 15✓	20.009✓	-19.981	0	-1.066	0	-131222.985	-69109.579	0.000	0.000000	
TOTAL..	ソツカクスウ= 4	360 0 0		67.492	0.000	0✓	0.000	0✓			ハイメンセキ=	549.759340	
											1/2=	274.87	+0.00
											メンセキ=	274.87✓	

セリ NO... 121BL⁽⁷⁾✓
(5)

121BL-28	121BL-38✓		183 3 15						-131223.717	-69095.861			
121BL-38	121BL-39✓	90 0 0	93 3 15✓	22.862✓	-1.218	0	22.830	-1	-131224.935	-69073.032	21.763	-26.507334	
121BL-39	121BL-27✓	90 0 0	3 3 15✓	20.009✓	19.981	0	1.066	0	-131204.954	-69071.966	45.658	912.292498	
121BL-27	121BL-28✓	90 0 0	273 3 15✓	22.862✓	1.218	0	-22.830	1	-131203.736	-69094.795	23.895	29.104110	
121BL-28	121BL-38✓	90 0 0	183 3 15✓	20.009✓	-19.981	0	-1.066	0	-131223.717	-69095.861	0.000	0.000000	
TOTAL..	ソツカクスウ= 4	360 0 0		85.742	0.000	0✓	0.000	0✓			ハイメンセキ=	914.889274	
											1/2=	457.44	+0.00
											メンセキ=	457.44✓	

*** メンセキ ケイサン (ハイオウキヨホウ) ***

チクメイ ... ミヤコタチク トチクカクセイリシキヨウ

セリ NO... 121BL(8)✓

NO.	NO.	ANGLE	AZIMUTH			LENGTH	DX	*	DY	*	X	Y.	DMD	2A	カ-フメンセキ
121BL-27	121BL-39✓		183	3	15						-131224.935	-69073.032			
121BL-39	121BL-40✓	90 0 0	93	3	15✓	8.706✓	-0.464	0	8.694	0	-131225.399	-69064.338	7.628	-3.539392	
121BL-40	121BL-26✓	90 0 0	3	3	15✓	20.009✓	19.981	0	1.066	0	-131205.418	-69063.272	17.388	347.429628	
121BL-26	121BL-27✓	90 0 0	273	3	15✓	8.706✓	0.464	0	-8.694	0	-131204.954	-69071.966	9.760	4.528640	
121BL-27	121BL-39✓	90 0 0	183	3	15✓	20.009✓	-19.981	0	-1.066	0	-131224.935	-69073.032	0.000	0.000000	
TOTAL..	ソツカクスク= 4	360 0 0				57.430	0.000	0✓	0.000	0✓			ハイメンセキ=	348.418876	
													1/2=	174.20	+0.00
													メンセキ=	174.20✓	

セリ NO... 121BL(9)✓

121BL-26	121BL-25✓		183	3	15						-131245.381	-69065.405			
121BL-25	121BL-13✓	90 0 2	93	3	17✓	20.261✓	-1.080	-1	20.232	1	-131246.462	-69045.172	18.100	-19.566100	
121BL-13	121BL-14✓	96 8 24	9	11	41✓	40.252✓	39.735	0	6.432	0	-131206.727	-69038.740	44.765	1778.737275	
121BL-14	121BL-26✓	83 51 34	273	3	15✓	24.567✓	1.309	0	-24.532	0	-131205.418	-69063.272	26.665	34.904485	
121BL-26	121BL-25✓	90 0 0	183	3	15✓	40.019✓	-39.962	-1	-2.132	-1	-131245.381	-69065.405	0.000	0.000000	
TOTAL..	ソツカクスク= 4	360 0 0				125.099	0.002	-2✓	0.000	0✓			ハイメンセキ=	1794.075660	
													1/2=	897.03	+0.00
													メンセキ=	897.03✓	

*** メンセキ 計算 (ハイオウキヨホウ) ***

チクメイ ... ミヤコタチク トチクカクセイリシキヨウ

レイ NO... 121BL⁽¹⁸⁾ ✓
~~(8)~~

NO.	NO.	ANGLE	AZIMUTH	LENGTH	DX	*	DY	*	X	Y	DMD	2A	カーブメンセキ
121BL-38	121BL-24 ✓		183 3 15						-131243.699	-69096.928			
121BL-24	121BL-25 ✓	90 0 2	93 3 17 ✓	31.568 ✓	-1.682	0	31.523	0	-131245.381	-69065.405	30.456	-51.226992	
121BL-25	121BL-40 ✓	89 59 58	3 3 15 ✓	20.010 ✓	19.982	0	1.066	1	-131225.399	-69064.338	63.046	1259.785172	
121BL-40	121BL-38 ✓	90 0 0	273 3 15 ✓	31.568 ✓	1.682	0	-31.523	0	-131223.717	-69095.861	32.590	54.816380	
121BL-38	121BL-24 ✓	90 0 0	183 3 15 ✓	20.010 ✓	-19.982	0	-1.066	-1	-131243.699	-69096.928	0.000	0.000000	
TOTAL..	ソツカクスウ= 4	360 0 0		103.156	0.000	0 ✓	0.000	0 ✓			ハイメンセキ=	1263.374560	
											1/2=	631.68	+0.00
											メンセキ=	631.68 ✓	

レイ NO... 121BL⁽¹¹⁾ ✓
~~(9)~~

121BL-36	121BL-23 ✓		183 3 15						-131242.378	-69121.690			
121BL-23	121BL-24 ✓	90 0 2	93 3 17 ✓	24.797 ✓	-1.321	0	24.762	0	-131243.699	-69096.928	23.695	-31.301095	
121BL-24	121BL-38 ✓	89 59 58	3 3 15 ✓	20.010 ✓	19.982	0	1.066	1	-131223.717	-69095.861	49.524	989.588568	
121BL-38	121BL-36 ✓	90 0 0	273 3 15 ✓	24.797 ✓	1.321	0	-24.762	0	-131222.396	-69120.623	25.829	34.120109	
121BL-36	121BL-23 ✓	90 0 0	183 3 15 ✓	20.010 ✓	-19.982	0	-1.066	-1	-131242.378	-69121.690	0.000	0.000000	
TOTAL..	ソツカクスウ= 4	360 0 0		89.614	0.000	0 ✓	0.000	0 ✓			ハイメンセキ=	992.407582	
											1/2=	496.20	+0.00
											メンセキ=	496.20 ✓	

*** メンセキ ケイサン (ハイイウキヨホウ) ***

チクメイ ... ミヤコタチク トチクカクセイリシキヨウ

												セリ NO... 121BL(11) ✓					
NO.	NO.	ANGLE			AZIMUTH			LENGTH	DX	*	DY	*	X	Y	D.MD	2A	カ-クメンセキ
121BL-46	121BL-41 ✓				183	3	15						-131242.397	-69121.331			
121BL-41	121BL-24 ✓	90	0	2	93	3	17 ✓	24.438 ✓	-1.302	0	24.403	0	-131243.699	-69096.928	23.337	-30.384774	
121BL-24	121BL-38 ✓	89	59	58	3	3	15 ✓	20.010 ✓	19.982	0	1.066	1	-131223.717	-69095.861	48.807	975.261474	
121BL-38	121BL-46 ✓	90	0	0	273	3	15 ✓	24.439 ✓	1.302	0	-24.404	0	-131222.415	-69120.265	25.470	33.161940	
121BL-46	121BL-41 ✓	90	0	0	183	3	15 ✓	20.010 ✓	-19.982	0	-1.066	0	-131242.397	-69121.331	0.000	0.000000	
TOTAL...	ソツカクスウ= 4	360	0	0				88.897	0.000	0 ✓	-0.001	1 ✓			ハイイメンセキ=	978.038640	
															1/2=	489.01	+0.00
															メンセキ=	489.01 ✓	

												セリ NO... 121BL(12)-1 ✓					
121BL-35	121BL-22 ✓				182	54	58						-131241.601	-69136.263			
121BL-22	121BL-41 ✓	90	8	19	93	3	17 ✓	14.953 ✓	-0.797	1	14.932	0	-131242.397	-69121.331	13.914	-11.075544	
121BL-41	121BL-46 ✓	89	59	58	3	3	15 ✓	20.010 ✓	19.982	0	1.066	0	-131222.415	-69120.265	29.912	597.701584	
121BL-46	121BL-35 ✓	90	0	0	273	3	15 ✓	15.001 ✓	0.799	0	-14.980	0	-131221.616	-69135.245	15.998	12.782402	
121BL-35	121BL-22 ✓	89	51	43	182	54	58 ✓	20.011 ✓	-19.985	0	-1.018	0	-131241.601	-69136.263	0.000	0.000000	
TOTAL...	ソツカクスウ= 4	360	0	0				69.975	-0.001	1 ✓	0.000	0 ✓			ハイイメンセキ=	599.408442	
															1/2=	299.70	+0.00
															メンセキ=	299.70 ✓	

*** メンセキ ケイサン (ハイオウキヨホウ) ***

チクメイ ... ミヤコタチク トチクカクセイリシキヨウ

ペリ NO... 121BL ⁽¹²⁾⁻¹ ~~(10)-1~~ ✓

NO.	NO.	ANGLE	AZIMUTH	LENGTH	DX	*	DY	*	X	Y	DMD	2A	カ-フ-メンセキ
121BL-35	121BL-22 ✓		182 54 58						-131241.601	-69136.263			
121BL-22	121BL-23 ✓	90 8 19	93 3 17 ✓	14.594 ✓	-0.778	1	14.573	0	-131242.378	-69121.690	13.555	-10.532235	
121BL-23	121BL-36 ✓	89 59 58	3 3 15 ✓	20.010 ✓	19.982	0	1.066	1	-131222.396	-69120.623	29.195	583.374490	
121BL-36	121BL-35 ✓	90 0 0	273 3 15 ✓	14.643 ✓	0.780	0	-14.622	0	-131221.616	-69135.245	15.640	12.199200	
121BL-35	121BL-22 ✓	89 51 43	182 54 58 ✓	20.011 ✓	-19.985	0	-1.018	0	-131241.601	-69136.263	0.000	0.000000	
TOTAL..	ソツカクスウ= 4	360 0 0		69.258	-0.001	1 ✓	-0.001	1 ✓			ハイメンセキ=	585.041455	
											1/2=	292.52	+0.00
											メンセキ=	292.52 ✓	

ペリ NO... 121BL ⁽¹²⁾⁻² ~~(10)-2~~ ✓

121BL-34	121BL-21 ✓		183 3 15						-131240.819	-69150.909			
121BL-21	121BL-22 ✓	90 0 2	93 3 17 ✓	14.667 ✓	-0.782	0	14.646	0	-131241.601	-69136.263	13.579	-10.618778	
121BL-22	121BL-35 ✓	89 51 41	2 54 58 ✓	20.011 ✓	19.985	0	1.018	0	-131221.616	-69135.245	29.243	584.421355	
121BL-35	121BL-34 ✓	90 8 17	273 3 15 ✓	14.618 ✓	0.779	0	-14.597	0	-131220.837	-69149.842	15.664	12.202256	
121BL-34	121BL-21 ✓	90 0 0	183 3 15 ✓	20.010 ✓	-19.982	0	-1.066	-1	-131240.819	-69150.909	0.000	0.000000	
TOTAL..	ソツカクスウ= 4	360 0 0		69.306	0.000	0 ✓	0.001	-1 ✓			ハイメンセキ=	586.004833	
											1/2=	293.00	+0.00
											メンセキ=	293.00 ✓	

*** メンセキ ケイサン (ハイオウキヨホウ) ***

チクメイ ... ミヤコタチク トチクカクセイリシキヨウ

セイリ NO... 121BL⁽¹³⁾ ✓
~~(11)~~

NO.	NO.	ANGLE	AZIMUTH	LENGTH	DX	*	DY	*	X	Y	DMD	2A	カーブメンセキ
121BL-33	121BL- 1 ✓		183 1 28						-131236.297	-69169.352			
121BL- 1	121BL- 2 ✓	135 13 56	138 15 24 ✓	4.979 ✓	-3.715	0	3.315	0	-131240.012	-69166.037	2.446	-9.086890	
121BL- 2	121BL-21 ✓	134 47 53	93 3 17 ✓	15.150 ✓	-0.807	0	15.128	0	-131240.819	-69150.909	20.889	-16.857423	
121BL-21	121BL-34 ✓	89 59 58	3 3 15 ✓	20.010 ✓	19.982	0	1.066	1	-131220.837	-69149.842	37.084	741.012488	
121BL-34	121BL-33 ✓	90 0 0	273 3 15 ✓	18.668 ✓	0.995	0	-18.641	0	-131219.842	-69168.483	19.510	19.412450	
121BL-33	121BL- 1 ✓	89 58 13	183 1 28 ✓	16.478 ✓	-16.455	0	-0.869	0	-131236.297	-69169.352	0.000	0.000000	
TOTAL..	ソツカクスク= 5	540 0 0		75.285	0.000	0 ✓	-0.001	1 ✓			ハイメンセキ=	734.480625	
											1/2=	367.24	+0.00
											メンセキ=	367.24 ✓	

チクメイ ... ミヤコタチク トチクカクセイリシキヨウ

NO.	NO.	ANGLE	*	AZIMUTH	LENGTH	DX	*	DY	*	X	Y	NO.
	121BL- 2 ✓									-131240.012	-69166.037	121BL- 2
121BL- 2	121BL-21 ✓			93 3 17 ✓	15.150 ✓	-0.807	0	15.128	0	-131240.819	-69150.909	121BL-21
121BL-21	121BL-22 ✓	180 0 0		93 3 17 ✓	14.667 ✓	-0.782	0	14.646	0	-131241.601	-69136.263	121BL-22
121BL-22	121BL-41 ✓	180 0 0		93 3 17 ✓	14.953 ✓	-0.797	1	14.932	0	-131242.397	-69121.331	121BL-41
121BL-41	121BL-24 ✓	180 0 0		93 3 17 ✓	24.438 ✓	-1.302	0	24.403	0	-131243.699	-69096.928	121BL-24
121BL-24	121BL-25 ✓	180 0 0		93 3 17 ✓	31.568 ✓	-1.682	0	31.523	0	-131245.381	-69065.405	121BL-25
121BL-25	121BL-13 ✓	180 0 0		93 3 17 ✓	20.261 ✓	-1.080	-1	20.232	1	-131246.462	-69045.172	121BL-13
	TOTAL..	900 0 0			121.037 ✓	-6.450	0 ✓	120.864	1 ✓			
	121BL-14 ✓									-131206.727	-69038.740	121BL-14
121BL-14	121BL-26 ✓			273 3 15 ✓	24.567 ✓	1.309	0	-24.532	0	-131205.418	-69063.272	121BL-26
121BL-26	121BL-27 ✓	180 0 0		273 3 15 ✓	8.706 ✓	0.464	0	-8.694	0	-131204.954	-69071.966	121BL-27
121BL-27	121BL-28 ✓	180 0 0		273 3 15 ✓	22.862 ✓	1.218	0	-22.830	1	-131203.736	-69094.795	121BL-28
121BL-28	121BL-42 ✓	180 0 0		273 3 15 ✓	13.197 ✓	0.703	0	-13.178	-1	-131203.033	-69107.974	121BL-42
121BL-42	121BL-43 ✓	180 0 0		273 3 15 ✓	11.060 ✓	0.589	0	-11.044	0	-131202.444	-69119.018	121BL-43
121BL-43	121BL-31 ✓	180 0 0		273 3 15 ✓	15.231 ✓	0.812	0	-15.209	0	-131201.632	-69134.227	121BL-31
121BL-31	121BL-32 ✓	180 0 0		273 3 15 ✓	14.570 ✓	0.776	0	-14.549	0	-131200.856	-69148.776	121BL-32
121BL-32	121BL- 7 ✓	180 0 0		273 3 15 ✓	15.127 ✓	0.806	0	-15.106	0	-131200.050	-69163.882	121BL- 7
	TOTAL..	1260 0 0			125.320 ✓	6.677	0 ✓	-125.142	0 ✓			
	121BL- 8 ✓									-131203.384	-69167.613	121BL- 8
121BL- 8	121BL-33 ✓			183 1 28 ✓	16.481 ✓	-16.458	0	-0.870	0	-131219.842	-69168.483	121BL-33
121BL-33	121BL- 1 ✓	180 0 0		183 1 28 ✓	16.478 ✓	-16.455	0	-0.869	0	-131236.297	-69169.352	121BL- 1
	TOTAL..	180 0 0			32.959 ✓	-32.913	0 ✓	-1.739	0 ✓			

チクメイ ... ミヤコタチク トチクカクセイリシキヨウ

NO.	NO.	ANGLE	*	AZIMUTH	LENGTH	DX	*	DY	*	X	Y	NO.
	121BL-33 ✓									-131219.842	-69168.483	121BL-33
121BL-33	121BL-34 ✓			93 3 15 ✓	18.668 ✓	-0.995	0	18.641	0	-131220.837	-69149.842	121BL-34
121BL-34	121BL-35 ✓	180 0 0		93 3 15 ✓	14.618 ✓	-0.779	0	14.597	0	-131221.616	-69135.245	121BL-35
121BL-35	121BL-44 ✓	180 0 0		93 3 15 ✓	15.183 ✓	-0.809	0	15.161	0	-131222.425	-69120.084	121BL-44
121BL-44	121BL-45 ✓	180 0 0		93 3 15 ✓	11.060 ✓	-0.589	0	11.044	0	-131223.014	-69109.040	121BL-45
121BL-45	121BL-38 ✓	180 0 0		93 3 15 ✓	13.197 ✓	-0.703	0	13.178	1	-131223.717	-69095.861	121BL-38
121BL-38	121BL-39 ✓	180 0 0		93 3 15 ✓	22.862 ✓	-1.218	0	22.830	-1	-131224.935	-69073.032	121BL-39
121BL-39	121BL-40 ✓	180 0 0		93 3 15 ✓	8.706 ✓	-0.464	0	8.694	0	-131225.399	-69064.338	121BL-40
	TOTAL..	1080 0 0			104.294 ✓	-5.557	0 ✓	104.145	0 ✓			
	121BL-33 ✓									-131219.842	-69168.483	121BL-33
121BL-33	121BL-34 ✓			93 3 15 ✓	18.668 ✓	-0.995	0	18.641	0	-131220.837	-69149.842	121BL-34
121BL-34	121BL-35 ✓	180 0 0		93 3 15 ✓	14.618 ✓	-0.779	0	14.597	0	-131221.616	-69135.245	121BL-35
121BL-35	121BL-46 ✓	180 0 0		93 3 15 ✓	15.001 ✓	-0.799	0	14.980	0	-131222.415	-69120.265	121BL-46
121BL-46	121BL-38 ✓	180 0 0		93 3 15 ✓	24.439 ✓	-1.302	0	24.404	0	-131223.717	-69095.861	121BL-38
121BL-38	121BL-40 ✓	180 0 0		93 3 15 ✓	31.568 ✓	-1.682	0	31.523	0	-131225.399	-69064.338	121BL-40
	TOTAL..	720 0 0			104.294 ✓	-5.557	0 ✓	104.145	0 ✓			
	121BL-33 ✓									-131219.842	-69168.483	121BL-33
121BL-33	121BL-34 ✓			93 3 15 ✓	18.668 ✓	-0.995	0	18.641	0	-131220.837	-69149.842	121BL-34
121BL-34	121BL-35 ✓	180 0 0		93 3 15 ✓	14.618 ✓	-0.779	0	14.597	0	-131221.616	-69135.245	121BL-35
121BL-35	121BL-46 ✓	180 0 0		93 3 15 ✓	15.001 ✓	-0.799	0	14.980	0	-131222.415	-69120.265	121BL-46
121BL-46	121BL-44 ✓	180 0 0		93 3 15 ✓	0.182 ✓	-0.010	0	0.182	-1	-131222.425	-69120.084	121BL-44
121BL-44	121BL-45 ✓	180 0 0		93 3 15 ✓	11.060 ✓	-0.589	0	11.044	0	-131223.014	-69109.040	121BL-45

チクメイ ... ミヤコタチク トチクカクセイリシキヨウ

NO.	NO.	ANGLE	*	AZIMUTH	LENGTH	DX	*	DY	*	X	Y	NO.
121BL-45	121BL-38 ✓	180 0 0		93 3 15 ✓	13.197 ✓	-0.703	0	13.178	1	-131223.717	-69095.861	121BL-38
121BL-38	121BL-39 ✓	180 0 0		93 3 15 ✓	22.862 ✓	-1.218	0	22.830	-1	-131224.935	-69073.032	121BL-39
121BL-39	121BL-40 ✓	180 0 0		93 3 15 ✓	8.706 ✓	-0.464	0	8.694	0	-131225.399	-69064.338	121BL-40
	TOTAL..	1260 0 0			104.294 ✓	-5.557	0 ✓	104.146	-1 ✓			
	121BL-21 ✓									-131240.819	-69150.909	121BL-21
121BL-21	121BL-34 ✓			3 3 15 ✓	20.010 ✓	19.982	0	1.066	1	-131220.837	-69149.842	121BL-34
121BL-34	121BL-32 ✓	180 0 0		3 3 15 ✓	20.009 ✓	19.981	0	1.066	0	-131200.856	-69148.776	121BL-32
	TOTAL..	180 0 0			40.019 ✓	39.963	0 ✓	2.132	1 ✓			
	121BL-22 ✓									-131241.601	-69136.263	121BL-22
121BL-22	121BL-35 ✓			2 54 58 ✓	20.011 ✓	19.985	0	1.018	0	-131221.616	-69135.245	121BL-35
121BL-35	121BL-31 ✓	180 0 0		2 54 58 ✓	20.010 ✓	19.984	0	1.018	0	-131201.632	-69134.227	121BL-31
	TOTAL...	180 0 0			40.021 ✓	39.969	0 ✓	2.036	0 ✓			
	121BL-24 ✓									-131243.699	-69096.928	121BL-24
121BL-24	121BL-38 ✓			3 3 15 ✓	20.010 ✓	19.982	0	1.066	1	-131223.717	-69095.861	121BL-38
121BL-38	121BL-28 ✓	180 0 0		3 3 15 ✓	20.009 ✓	19.981	0	1.066	0	-131203.736	-69094.795	121BL-28
	TOTAL...	180 0 0			40.019 ✓	39.963	0 ✓	2.132	1 ✓			
	121BL-25 ✓									-131245.381	-69065.405	121BL-25
121BL-25	121BL-40 ✓			3 3 15 ✓	20.010 ✓	19.982	0	1.066	1	-131225.399	-69064.338	121BL-40
121BL-40	121BL-26 ✓	180 0 0		3 3 15 ✓	20.009 ✓	19.981	0	1.066	0	-131205.418	-69063.272	121BL-26
	TOTAL...	180 0 0			40.019 ✓	39.963	0 ✓	2.132	1 ✓			