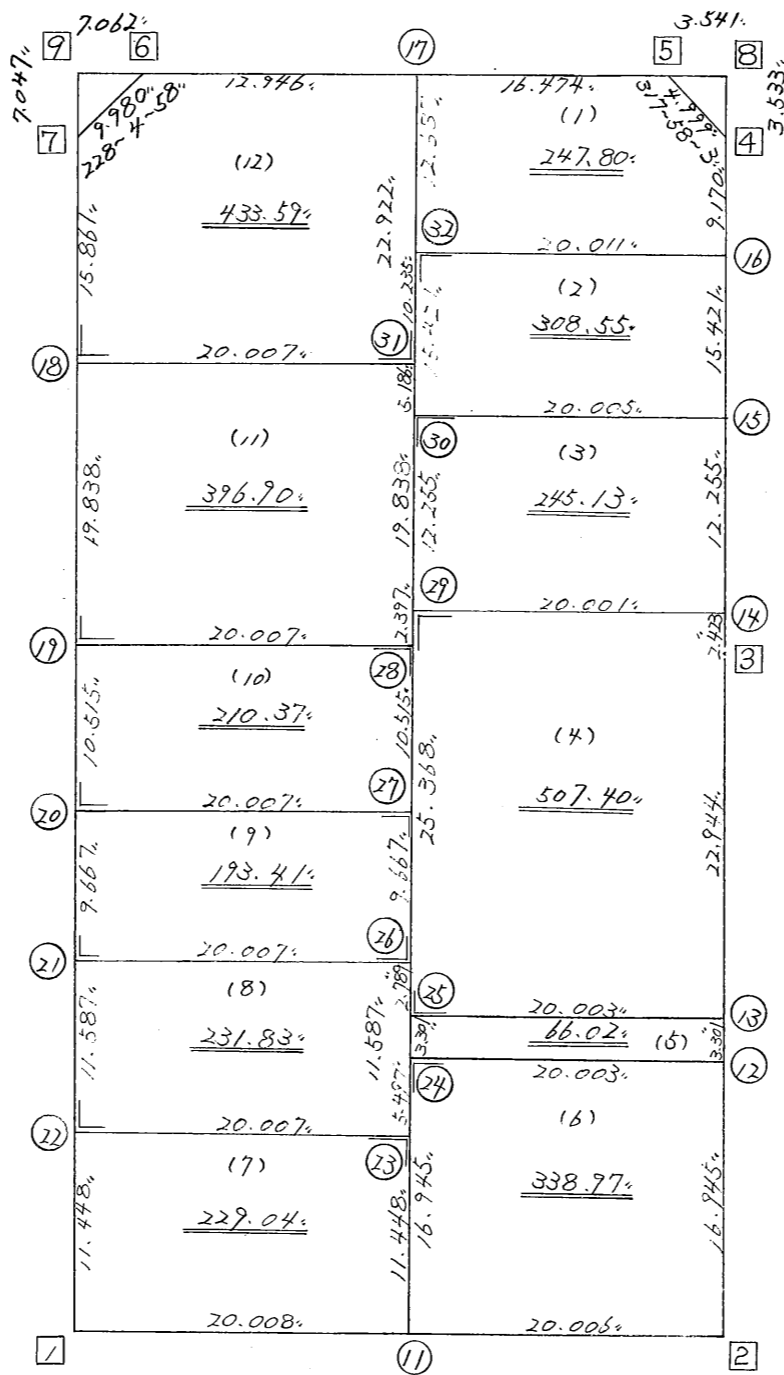


略 図

街区面積 = 3409.071 m²
 画地面積 = 3409.011

$\frac{183-2-39}{78.916}$



$\frac{39.269}{3-3-50}$

$\frac{43.190}{3-2-7}$

$\frac{40.014}{93-2-29}$

街区点番号 1 ~ 9 筆界点番号 11 ~ 32 画地番号 (1) ~ (12)

*** メンセキ ケイサン (ハイオウキヨホウ) ***

チクメイ ... ミヤコタチク トチクカクセイリシキヨウ

セイリ NO... 110BL

NO.	NO.	ANGLE	AZIMUTH	LENGTH	DX	*	DY	*	X	Y	DMD	2A	カーブメンセキ
110BL- 7	110BL- 1		183 2 39						-131089.577	-69207.571			
110BL- 1	110BL- 2	89 59 50	93 2 29	40.014	-2.123	0	39.958	0	-131091.700	-69167.613	35.767	-75.933341	
110BL- 2	110BL- 3	89 59 38	3 2 7	43.190	43.129	0	2.287	0	-131048.571	-69165.326	78.012	3364.579548	
110BL- 3	110BL- 4	180 1 43	3 3 50	39.269	39.213	0	2.099	0	-131009.358	-69163.227	82.398	3231.072774	
110BL- 4	110BL- 5	134 54 13	317 58 3	4.999	3.713	0	-3.347	0	-131005.645	-69166.574	81.150	301.309950	
110BL- 5	110BL- 6	135 1 59	273 0 2	29.420	1.540	0	-29.380	0	-131004.105	-69195.954	48.423	74.571420	
110BL- 6	110BL- 7	135 4 56	228 4 58	9.980	-6.667	0	-7.426	0	-131010.772	-69203.380	11.617	-77.450539	
110BL- 7	110BL- 1	134 57 41	183 2 39	78.916	-78.805	0	-4.191	0	-131089.577	-69207.571	0.000	0.000000	
TOTAL..	ソツカクスク= 7	900 0 0		245.788	0.000	0	0.000	0			ハイメンセキ=	6818.149812	
											1/2=	3409.07	+0.00
											メンセキ=	3409.07	

*** ムンセキ カイサン (ハ"イオウキヨホウ) ***

チクメイ ... ミヤコタ"チク トチクカクセイリシ"キ"ヨウ

											セリ NO... 110BL(1)✓		カ-フ"ムンセキ				
NO.	NO.	ANGLE			AZIMUTH			LENGTH	DX	*	DY	*	X	Y.	DMD	2A	
110BL-17	110BL-32✓				183	2	39✓						-131017.452	-69183.700			
110BL-32	110BL-16✓	90	0	0	93	2	39✓	20.011✓	-1.063	1	19.983	0	-131018.514	-69163.717	19.309	-20.506158	
110BL-16	110BL- 4✓	90	1	11	3	3	50✓	9.170✓	9.157	-1	0.490	0	-131009.358	-69163.227	39.782	364.243992	
110BL- 4	110BL- 5✓	134	54	13	317	58	3✓	4.999✓	3.713	0	-3.347	0	-131005.645	-69166.574	36.925	137.102525	
110BL- 5	110BL-17✓	135	1	59	273	0	2✓	16.474✓	0.862	0	-16.451	-1	-131004.783	-69183.026	17.126	14.762612	
110BL-17	110BL-32✓	90	2	37	183	2	39✓	12.687✓	-12.669	0	-0.674	0	-131017.452	-69183.700	0.000	0.000000	
TOTAL..	ソツカクスク= 5	540	0	0				63.341	0.000	0✓	0.001	-1✓			ハ"イムンセキ=	495.602971	
															1/2=	247.80	+0.00
															ムンセキ=	247.80✓	

											セリ NO... 110BL(2)✓						
110BL-32	110BL-30✓				183	2	39						-131032.851	-69184.518			
110BL-30	110BL-15✓	90	0	0	93	2	39✓	20.005✓	-1.062	-1	19.977	0	-131033.914	-69164.541	19.159	-20.366017	
110BL-15	110BL-16✓	90	1	11	3	3	50✓	15.421✓	15.399	1	0.824	0	-131018.514	-69163.717	39.960	615.384000	
110BL-16	110BL-32✓	89	58	49	273	2	39✓	20.011✓	1.063	-1	-19.983	0	-131017.452	-69183.700	20.801	22.090662	
110BL-32	110BL-30✓	90	0	0	183	2	39✓	15.421✓	-15.399	0	-0.819	1	-131032.851	-69184.518	0.000	0.000000	
TOTAL..	ソツカクスク= 4	360	0	0				70.858	0.001	-1✓	-0.001	1✓			ハ"イムンセキ=	617.108645	
															1/2=	308.55	+0.00
															ムンセキ=	308.55✓	

*** ムンセキ ケイサン (ハイオウキヨボウ) ***

チクメイ ... ミヤコタチク トチクカクセイリシキヨウ

												セリ NO... 110BL(3)✓					
NO.	NO.	ANGLE			AZIMUTH		LENGTH	DX	*	DY	*	X	Y	DMD	2A	カ-フ"ムンセキ	
110BL-30	110BL-29✓				183	2	39					-131045.089	-69185.169				
110BL-29	110BL-14✓	90	0	0	93	2	39✓	20.001✓	-1.062	0	19.973	0	-131046.151	-69165.196	19.322	-20.519964	
110BL-14	110BL-15✓	90	1	11	3	3	50✓	12.255✓	12.237	0	0.655	0	-131033.914	-69164.541	39.950	488.868150	
110BL-15	110BL-30✓	89	58	49	273	2	39✓	20.005✓	1.062	1	-19.977	0	-131032.851	-69184.518	20.628	21.927564	
110BL-30	110BL-29✓	90	0	0	183	2	39✓	12.255✓	-12.238	0	-0.651	0	-131045.089	-69185.169	0.000	0.000000	
TOTAL..	ソツカクスウ= 4	360	0	0				64.516	-0.001	1✓	0.000	0✓			ハイムンセキ=	490.275750	
															1/2=	245.13	+0.00
															ムンセキ=	245.13✓	

												セリ NO... 110BL(4)✓					
110BL-29	110BL-25✓				183	2	39					-131070.421	-69186.516				
110BL-25	110BL-13✓	90	0	0	93	2	39✓	20.003✓	-1.062	-1	19.975	0	-131071.484	-69166.541	18.628	-19.801564	
110BL-13	110BL- 3✓	89	59	28	3	2	7✓	22.944✓	22.912	1	1.215	0	-131048.571	-69165.326	39.818	912.349834	
110BL- 3	110BL-14✓	180	1	43	3	3	50✓	2.423✓	2.420	0	0.130	0	-131046.151	-69165.196	41.163	99.614460	
110BL-14	110BL-29✓	89	58	49	273	2	39✓	20.001✓	1.062	0	-19.973	0	-131045.089	-69185.169	21.320	22.641840	
110BL-29	110BL-25✓	90	0	0	183	2	39✓	25.368✓	-25.332	0	-1.347	0	-131070.421	-69186.516	0.000	0.000000	
TOTAL..	ソツカクスウ= 5	540	0	0				90.739	0.000	0✓	0.000	0✓			ハイムンセキ=	1014.804570	
															1/2=	507.40	+0.00
															ムンセキ=	507.40✓	

*** ムンセキ ケイサン (ハイオウキヨホウ) ***

チクメイ ... ミヤコタチク トチクカクセイリシキヨウ

											セリ NO... 110BL(5)✓						
NO.	NO.	ANGLE			AZIMUTH		LENGTH	DX	*	DY	*	X	Y	DMD	2A	カ-フ"ムンセキ	
110BL-25	110BL-24✓				183	2	39					-131073.717	-69186.691				
110BL-24	110BL-12✓	90	0	0	93	2	39✓	20.003✓	-1.062	-1	19.975	0	-131074.780	-69166.716	19.800	-21.047400	
110BL-12	110BL-13✓	89	59	28	3	2	7✓	3.301✓	3.296	0	0.175	0	-131071.484	-69166.541	39.950	131.675200	
110BL-13	110BL-25✓	90	0	32	273	2	39✓	20.003✓	1.062	1	-19.975	0	-131070.421	-69186.516	20.150	21.419450	
110BL-25	110BL-24✓	90	0	0	183	2	39✓	3.301✓	-3.296	0	-0.175	0	-131073.717	-69186.691	0.000	0.000000	
TOTAL..	ソツカクスウ= 4	360	0	0				46.608	0.000	0✓	0.000	0✓			ハイムンセキ=	132.047250	
															1/2=	66.02	+0.00
															ムンセキ=	66.02✓	

											セリ NO... 110BL(6)✓						
110BL-24	110BL-11✓				183	2	39					-131090.639	-69187.591				
110BL-11	110BL- 2✓	89	59	50	93	2	29✓	20.006✓	-1.061	0	19.978	0	-131091.700	-69167.613	19.078	-20.241758	
110BL- 2	110BL-12✓	89	59	38	3	2	7✓	16.945✓	16.921	-1	0.897	0	-131074.780	-69166.716	39.953	676.004760	
110BL-12	110BL-24✓	90	0	32	273	2	39✓	20.003✓	1.062	1	-19.975	0	-131073.717	-69186.691	20.875	22.190125	
110BL-24	110BL-11✓	90	0	0	183	2	39✓	16.945✓	-16.921	-1	-0.900	0	-131090.639	-69187.591	0.000	0.000000	
TOTAL..	ソツカクスウ= 4	360	0	0				73.899	0.001	-1✓	0.000	0✓			ハイムンセキ=	677.953127	
															1/2=	338.97	+0.00
															ムンセキ=	338.97✓	

*** メンセキ ケイサン (ハイイウキヨホウ) ***

チクメイ ... ミヤコタチク トチクカクセイリシキヨウ

													セリ NO... 110BL(7)✓		カ-フメンセキ		
NO.	NO.	ANGLE			AZIMUTH			LENGTH	DX	*	DY	*	X	Y	DMD	2A	
110BL-22	110BL- 1✓				183	2	39						-131089.577	-69207.571			
110BL- 1	110BL-11✓	89	59	50	93	2	29✓	20.008✓	-1.062	0	19.980	0	-131090.639	-69187.591	19.371	-20.572002	
110BL-11	110BL-23✓	90	0	10	3	2	39✓	11.448✓	11.432	-1	0.608	0	-131079.208	-69186.983	39.959	456.771329	
110BL-23	110BL-22✓	90	0	0	273	2	39✓	20.007✓	1.062	1	-19.979	0	-131078.145	-69206.962	20.588	21.885044	
110BL-22	110BL- 1✓	90	0	0	183	2	39✓	11.448✓	-11.432	0	-0.608	-1	-131089.577	-69207.571	0.000	0.000000	
TOTAL..	ソツカクスウ= 4	360	0	0				62.911	0.000	0✓	0.001	-1✓			ハイイウキヨホウ=	458.084371	
														1/2=	229.04	+0.00	
														メンセキ=	229.04✓		

													セリ NO... 110BL(8)✓				
110BL-21	110BL-22✓				183	2	39						-131078.145	-69206.962			
110BL-22	110BL-23✓	90	0	0	93	2	39✓	20.007✓	-1.062	-1	19.979	0	-131079.208	-69186.983	19.364	-20.583932	
110BL-23	110BL-26✓	90	0	0	3	2	39✓	11.587✓	11.571	0	0.615	0	-131067.637	-69186.368	39.958	462.354018	
110BL-26	110BL-21✓	90	0	0	273	2	39✓	20.007✓	1.062	1	-19.979	0	-131066.574	-69206.347	20.594	21.891422	
110BL-21	110BL-22✓	90	0	0	183	2	39✓	11.587✓	-11.571	0	-0.615	0	-131078.145	-69206.962	0.000	0.000000	
TOTAL..	ソツカクスウ= 4	360	0	0				63.188	0.000	0✓	0.000	0✓			ハイイウキヨホウ=	463.661508	
														1/2=	231.83	+0.00	
														メンセキ=	231.83✓		

*** ムセキ ケイサン (ハイオウキヨホウ) ***

チクメイ ... ミヤコタチク トチクカクセイリヨキヨウ

NO.	NO.	ANGLE	AZIMUTH			LENGTH	DX	*	DY	*	X	Y	DMD	2A	カ-フムセキ
110BL-20	110BL-21✓		183	2	39						-131066.574	-69206.347			
110BL-21	110BL-26✓	90 0 0	93	2	39✓	20.007✓	-1.062	-1	19.979	0	-131067.637	-69186.368	19.466	-20.692358	
110BL-26	110BL-27✓	90 0 0	3	2	39✓	9.667✓	9.653	1	0.513	0	-131057.983	-69185.855	39.958	385.754532	
110BL-27	110BL-20✓	90 0 0	273	2	39✓	20.007✓	1.062	0	-19.979	0	-131056.921	-69205.834	20.492	21.762504	
110BL-20	110BL-21✓	90 0 0	183	2	39✓	9.667✓	-9.653	0	-0.513	0	-131066.574	-69206.347	0.000	0.000000	
TOTAL..	ソツカクスウ= 4	360 0 0				59.348	0.000	0✓	0.000	0✓			ハイムセキ=	386.824678	
													1/2=	193.41	+0.00
													ムセキ=	193.41✓	

チクメイ NO... 110BL(10)✓

110BL-19	110BL-20✓		183	2	39						-131056.921	-69205.834			
110BL-20	110BL-27✓	90 0 0	93	2	39✓	20.007✓	-1.062	0	19.979	0	-131057.983	-69185.855	19.420	-20.624040	
110BL-27	110BL-28✓	90 0 0	3	2	39✓	10.515✓	10.500	0	0.558	1	-131047.483	-69185.296	39.958	419.559000	
110BL-28	110BL-19✓	90 0 0	273	2	39✓	20.007✓	1.062	0	-19.979	0	-131046.421	-69205.275	20.538	21.811356	
110BL-19	110BL-20✓	90 0 0	183	2	39✓	10.515✓	-10.500	0	-0.558	-1	-131056.921	-69205.834	0.000	0.000000	
TOTAL..	ソツカクスウ= 4	360 0 0				61.044	0.000	0✓	0.000	0✓			ハイムセキ=	420.746316	
													1/2=	210.37	+0.00
													ムセキ=	210.37✓	

*** メンセキ ケイサン (ハイオウキヨホウ) ***

チクメイ ... ミヤコタチク トチクカクセイリシキヨウ

せり NO... 110BL(11)✓

NO.	NO.	ANGLE	AZIMUTH			LENGTH	DX	*	DY	*	X	Y	DMD	2A	か-フメンセキ
110BL-18	110BL-19✓		183	2	39						-131046.421	-69205.275			
110BL-19	110BL-28✓	90 0 0	93	2	39✓	20.007✓	-1.062	0	19.979	0	-131047.483	-69185.296	18.926	-20.099412	
110BL-28	110BL-31✓	90 0 0	3	2	39✓	19.838✓	19.810	0	1.054	-1	-131027.673	-69184.243	39.958	791.567980	
110BL-31	110BL-18✓	90 0 0	273	2	39✓	20.007✓	1.062	0	-19.979	0	-131026.611	-69204.222	21.032	22.335984	
110BL-18	110BL-19✓	90 0 0	183	2	39✓	19.838✓	-19.810	0	-1.054	1	-131046.421	-69205.275	0.000	0.000000	
TOTAL..	ソツカクスク= 4	360 0 0				79.690	0.000	0✓	0.000	0✓			ハイメンセキ=	793.804552	
													1/2=	396.90	+0.00
													メンセキ=	396.90✓	

せり NO... 110BL(12)✓

110BL- 7	110BL-18✓		183	2	39						-131026.611	-69204.222			
110BL-18	110BL-31✓	90 0 0	93	2	39✓	20.007✓	-1.062	0	19.979	0	-131027.673	-69184.243	19.137	-20.323494	
110BL-31	110BL-17✓	90 0 0	3	2	39✓	22.922✓	22.890	0	1.217	0	-131004.783	-69183.026	40.333	923.222370	
110BL-17	110BL- 6✓	89 57 23	273	0	2✓	12.946✓	0.678	0	-12.928	0	-131004.105	-69195.954	28.622	19.405716	
110BL- 6	110BL- 7✓	135 4 56	228	4	58✓	9.980✓	-6.667	0	-7.426	0	-131010.772	-69203.380	8.268	-55.122756	
110BL- 7	110BL-18✓	134 57 41	183	2	39✓	15.861✓	-15.839	0	-0.842	0	-131026.611	-69204.222	0.000	0.000000	
TOTAL..	ソツカクスク= 5	540 0 0				81.716	0.000	0✓	0.000	0✓			ハイメンセキ=	867.181836	
													1/2=	433.59	+0.00
													メンセキ=	433.59✓	

*** ケツコウ トラハース ***

チクメイ ... ミヤコタチク トチクカクセイリシキヨウ

NO.	NO.	ANGLE	*	AZIMUTH	LENGTH	DX	*	DY	*	X	Y	NO.
	110BL- 1✓									-131089.577	-69207.571	110BL- 1
110BL- 1	110BL-11✓		93	2 29✓	20.008✓	-1.062	0	19.980	0	-131090.639	-69187.591	110BL-11
110BL-11	110BL- 2✓	180 0 0	93	2 29✓	20.006 ✓	-1.061	0	19.978	0	-131091.700	-69167.613	110BL- 2
	TOTAL..	180 0 0			40.014 ✓	-2.123	0 ✓	39.958	0 ✓			
	110BL- 2✓									-131091.700	-69167.613	110BL- 2
110BL- 2	110BL-12✓		3	2 7✓	16.945 ✓	16.921	-1	0.897	0	-131074.780	-69166.716	110BL-12
110BL-12	110BL-13✓	180 0 0	3	2 7✓	3.301 ✓	3.296	0	0.175	0	-131071.484	-69166.541	110BL-13
110BL-13	110BL- 3✓	180 0 0	3	2 7✓	22.944 ✓	22.912	1	1.215	0	-131048.571	-69165.326	110BL- 3
	TOTAL...	360 0 0			43.190 ✓	43.129	0 ✓	2.287	0 ✓			
	110BL- 3✓									-131048.571	-69165.326	110BL- 3
110BL- 3	110BL-14✓		3	3 50✓	2.423 ✓	2.420	0	0.130	0	-131046.151	-69165.196	110BL-14
110BL-14	110BL-15✓	180 0 0	3	3 50✓	12.255 ✓	12.237	0	0.655	0	-131033.914	-69164.541	110BL-15
110BL-15	110BL-16✓	180 0 0	3	3 50✓	15.421 ✓	15.399	1	0.824	0	-131018.514	-69163.717	110BL-16
110BL-16	110BL- 4✓	180 0 0	3	3 50✓	9.170 ✓	9.157	-1	0.490	0	-131009.358	-69163.227	110BL- 4
	TOTAL..	540 0 0			39.269 ✓	39.213	0 ✓	2.099	0 ✓			
	110BL- 5✓									-131005.645	-69166.574	110BL- 5
110BL- 5	110BL-17✓		273	0 2 ✓	16.474 ✓	0.862	0	-16.451	-1	-131004.783	-69183.026	110BL-17
110BL-17	110BL- 6✓	180 0 0	273	0 2 ✓	12.946 ✓	0.678	0	-12.928	0	-131004.105	-69195.954	110BL- 6
	TOTAL..	180 0 0			29.420 ✓	1.540	0 ✓	-29.379	-1 ✓			
	110BL- 7✓									-131010.772	-69203.380	110BL- 7

*** ケツコウ トラハス ***

チクメイ ... ミヤコタチク トチクカクセイリシキヨウ

NO.	NO.	ANGLE	*	AZIMUTH	LENGTH	DX	*	DY	*	X	Y	NO.
110BL-7	110BL-18✓			183 2 39✓	15.861✓	-15.839	0	-0.842	0	-131026.611	-69204.222	110BL-18
110BL-18	110BL-19✓	180 0 0		183 2 39✓	19.838✓	-19.810	0	-1.054	1	-131046.421	-69205.275	110BL-19
110BL-19	110BL-20✓	180 0 0		183 2 39✓	10.515✓	-10.500	0	-0.558	-1	-131056.921	-69205.834	110BL-20
110BL-20	110BL-21✓	180 0 0		183 2 39✓	9.667✓	-9.653	0	-0.513	0	-131066.574	-69206.347	110BL-21
110BL-21	110BL-22✓	180 0 0		183 2 39✓	11.587✓	-11.571	0	-0.615	0	-131078.145	-69206.962	110BL-22
110BL-22	110BL-1✓	180 0 0		183 2 39✓	11.448✓	-11.432	0	-0.608	-1	-131089.577	-69207.571	110BL-1
	TOTAL..	900 0 0			78.916✓	-78.805	0✓	-4.190	-1✓			
	110BL-17✓									-131004.783	-69183.026	110BL-17
110BL-17	110BL-32✓			183 2 39✓	12.687✓	-12.669	0	-0.674	0	-131017.452	-69183.700	110BL-32
110BL-32	110BL-30✓	180 0 0		183 2 39✓	15.421✓	-15.399	0	-0.819	1	-131032.851	-69184.518	110BL-30
110BL-30	110BL-29✓	180 0 0		183 2 39✓	12.255✓	-12.238	0	-0.651	0	-131045.089	-69185.169	110BL-29
110BL-29	110BL-25✓	180 0 0		183 2 39✓	25.368✓	-25.332	0	-1.347	0	-131070.421	-69186.516	110BL-25
110BL-25	110BL-24✓	180 0 0		183 2 39✓	3.301✓	-3.296	0	-0.175	0	-131073.717	-69186.691	110BL-24
110BL-24	110BL-11✓	180 0 0		183 2 39✓	16.945✓	-16.921	-1	-0.900	0	-131090.639	-69187.591	110BL-11
	TOTAL..	900 0 0			85.977✓	-85.855	-1✓	-4.566	1✓			
	110BL-17✓									-131004.783	-69183.026	110BL-17
110BL-17	110BL-31✓			183 2 39✓	22.922✓	-22.890	0	-1.217	0	-131027.673	-69184.243	110BL-31
110BL-31	110BL-28✓	180 0 0		183 2 39✓	19.838✓	-19.810	0	-1.054	1	-131047.483	-69185.296	110BL-28
110BL-28	110BL-27✓	180 0 0		183 2 39✓	10.515✓	-10.500	0	-0.558	-1	-131057.983	-69185.855	110BL-27
110BL-27	110BL-26✓	180 0 0		183 2 39✓	9.667✓	-9.653	-1	-0.513	0	-131067.637	-69186.368	110BL-26
110BL-26	110BL-23✓	180 0 0		183 2 39✓	11.587✓	-11.571	0	-0.615	0	-131079.208	-69186.983	110BL-23
110BL-23	110BL-11✓	180 0 0		183 2 39✓	11.448✓	-11.432	1	-0.608	0	-131090.639	-69187.591	110BL-11

*** ケツコウ トラハ入 ***

チウメイ ... ミヤコタチク トチクカクセイリシキヨウ

NO.	NO.	ANGLE	*	AZIMUTH	LENGTH	DX	*	DY	*	X	Y	NO.
	TOTAL..	900 0 0			85.977✓	-85.856	0✓	-4.565	0✓			
	110BL-17✓									-131004.783	-69183.026	110BL-17
110BL-17	110BL-32✓		183	2 39✓	12.687✓	-12.669	0	-0.674	0	-131017.452	-69183.700	110BL-32
110BL-32	110BL-31✓	180 0 0	183	2 39✓	10.235✓	-10.221	0	-0.544	1	-131027.673	-69184.243	110BL-31
110BL-31	110BL-30✓	180 0 0	183	2 39✓	5.186✓	-5.179	1	-0.275	0	-131032.851	-69184.518	110BL-30
110BL-30	110BL-29✓	180 0 0	183	2 39✓	12.255✓	-12.238	0	-0.651	0	-131045.089	-69185.169	110BL-29
110BL-29	110BL-28✓	180 0 0	183	2 39✓	2.397✓	-2.394	0	-0.127	0	-131047.483	-69185.296	110BL-28
110BL-28	110BL-27✓	180 0 0	183	2 39✓	10.515✓	-10.500	0	-0.558	-1	-131057.983	-69185.855	110BL-27
110BL-27	110BL-26✓	180 0 0	183	2 39✓	9.667✓	-9.653	-1	-0.513	0	-131067.637	-69186.368	110BL-26
110BL-26	110BL-25✓	180 0 0	183	2 39✓	2.789✓	-2.785	1	-0.148	0	-131070.421	-69186.516	110BL-25
110BL-25	110BL-24✓	180 0 0	183	2 39✓	3.301✓	-3.296	0	-0.175	0	-131073.717	-69186.691	110BL-24
110BL-24	110BL-23✓	180 0 0	183	2 39✓	5.497✓	-5.489	-2	-0.292	0	-131079.208	-69186.983	110BL-23
110BL-23	110BL-11✓	180 0 0	183	2 39✓	11.448✓	-11.432	1	-0.608	0	-131090.639	-69187.591	110BL-11
	TOTAL..	1800 0 0			85.977✓	-85.856	0✓	-4.565	0✓			