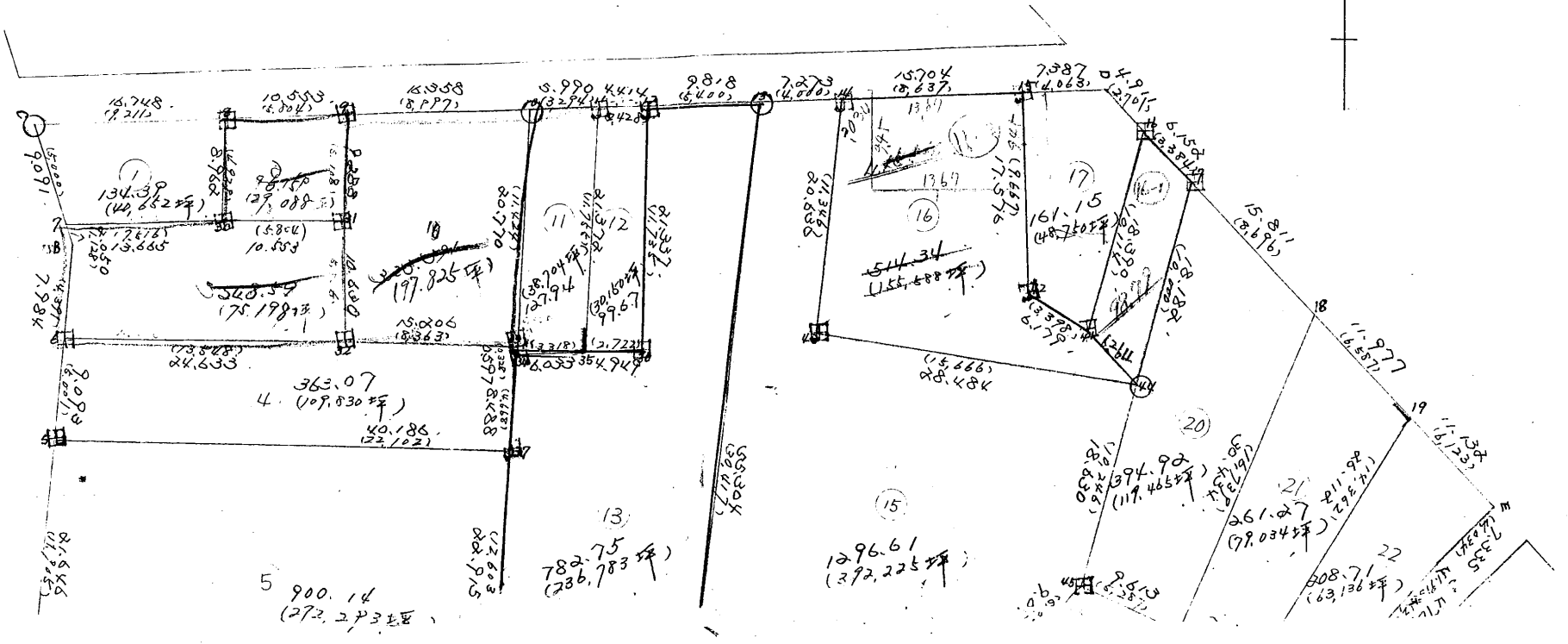
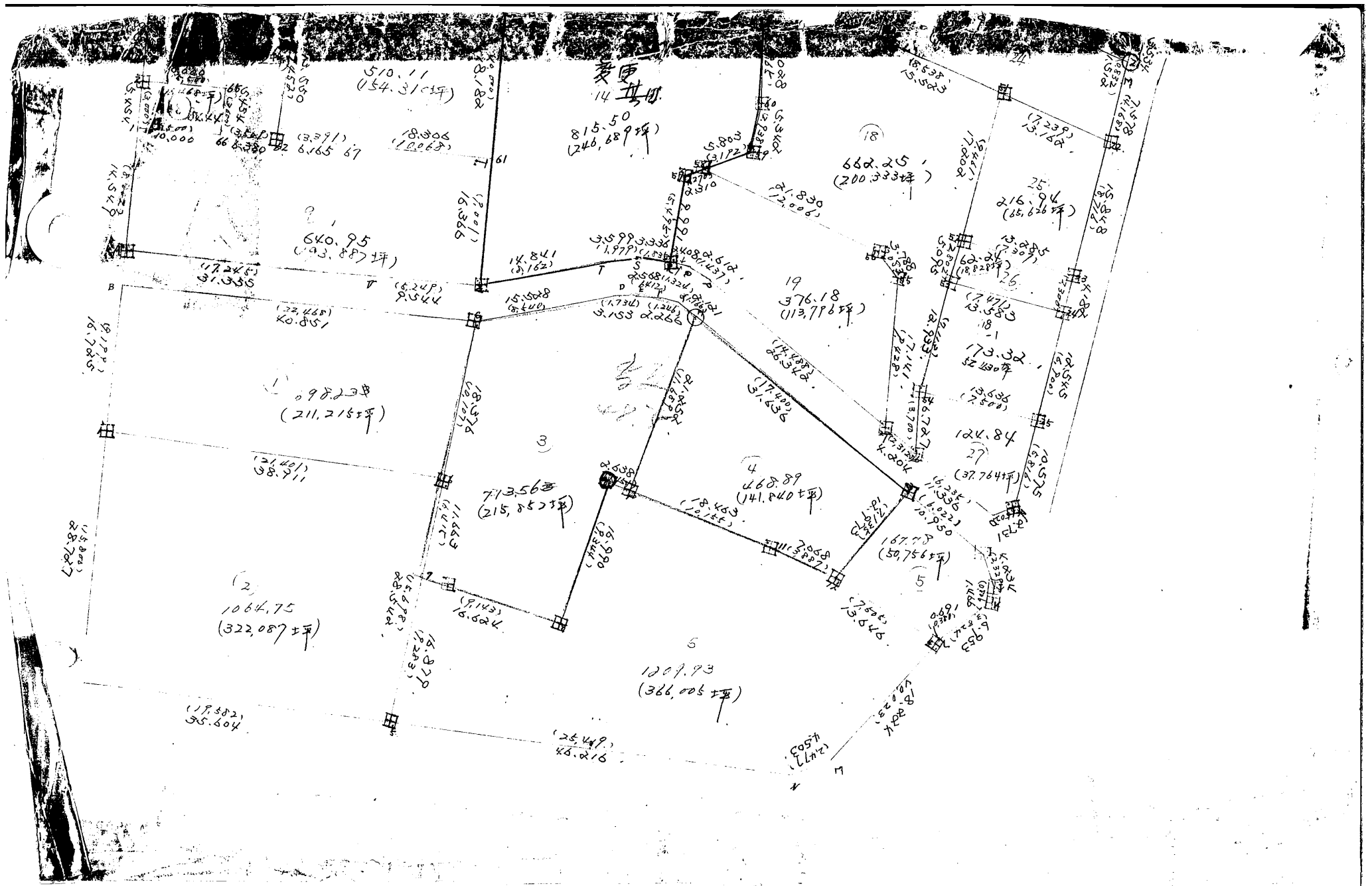


11-1.
 坪
 計算面積 = 300P 523.4
 角切面積 =
 換地面積 = 310P 491.4
 0.637 TF
 m²
 1024.6, 545.8
 - 1024.6, 489
 1110, 089

11-2.
 坪
 計算面積 = 307.780
 角切面積 =
 換地面積 = 307.756
 0.637 TF
 m²
 4323, 174
 - 4323, 166
 1110, 008





街廓原子一覽表用紙

(// BL)

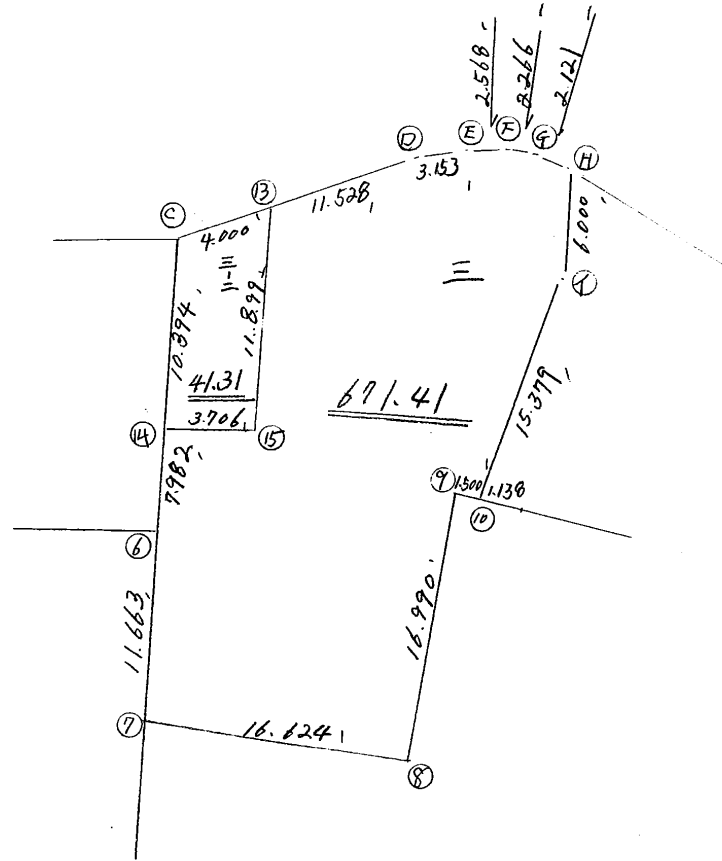


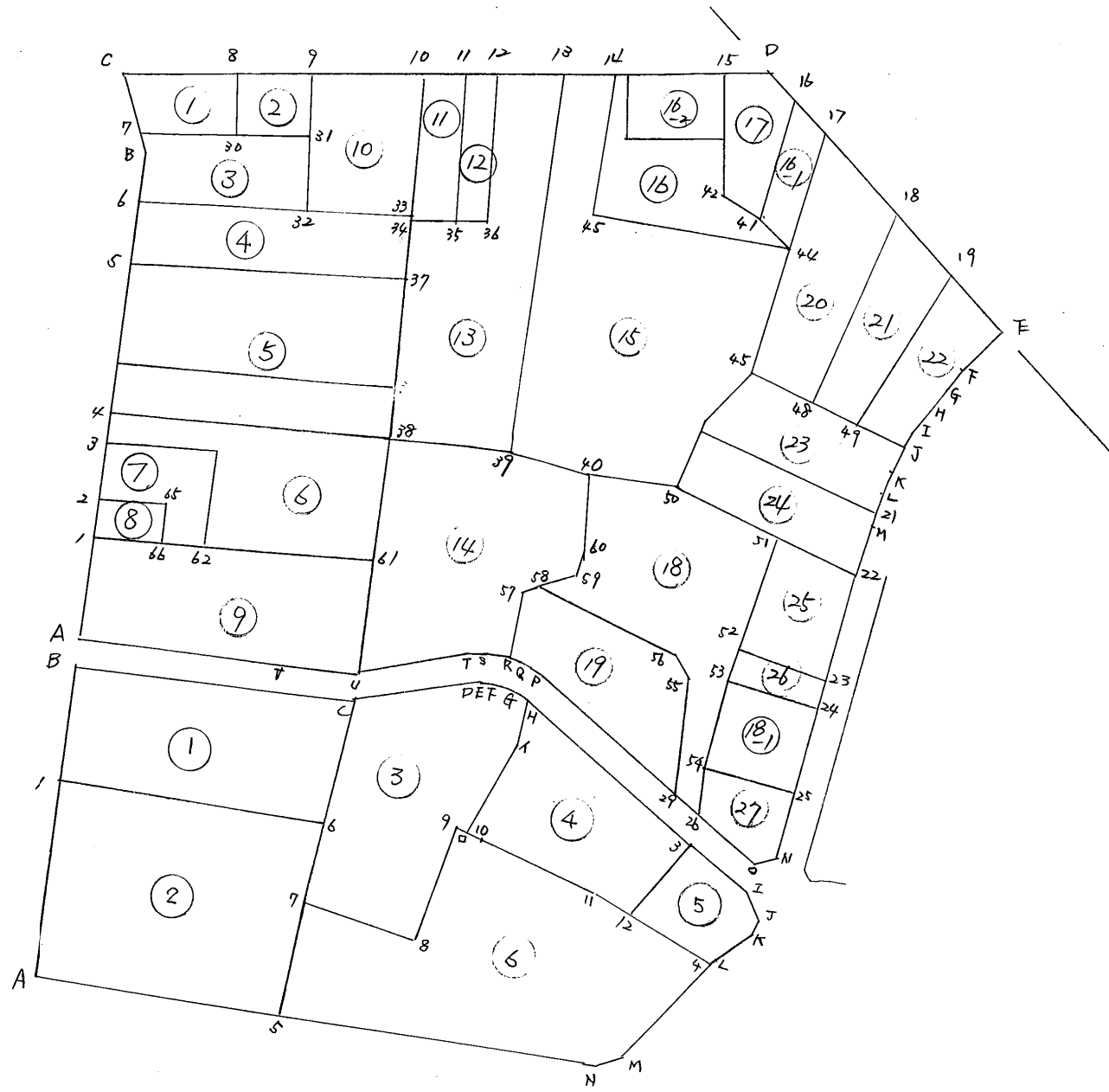
略 ☒

計算面積 = _____ m²

角切面積 = > _____

換地面積 = _____





街廓点坐標及街廓面積計算簿

街廓番号 (No. 11 B4 -) 11

点	方位角(A)	距離(S)	cosA	sinA	x	y	(3) 複緯距	(4) 複経距	(1) × (4)	(2) × (3)	
			(1) S cosA	(2) S sinA							
A					3108.378	70994.561					
2	834 0	20.003	+ 19.780	+ 2.980	3088.598	70992.581	+ 19.780	+ 2.980	+ 58.9444	+ 58.9444	
11	838 20	12.710	+ 12.566	+ 1.909	3076.032	70990.672	+ 62.1261	+ 7.8691	+ 98.8818	+ 99.5086	
5	834 20	21.646	+ 21.404	+ 3.226	3054.628	70987.446	+ 86.0964	+ 13.0041	+ 278.3376	+ 277.7456	
6	835 40	9.093	+ 8.991	+ 1.059	3044.637	70986.087	+ 116.4811	+ 17.5891	+ 158.1426	+ 158.3112	
B	835 40	7.984	+ 7.894	+ 1.190	3037.143	70984.894	+ 132.3761	+ 20.1411	+ 158.9930	+ 159.1175	
7	1441 40	20.50	+ 1.983	- 0.520	3035.760	70986.414	+ 143.2531	+ 20.8141	+ 41.2741	- 74.4915	
C	345 18 30	9.091	+ 8.794	- 2.306	3026.966	70987.720	+ 154.2301	+ 17.9881	+ 158.1864	- 355.1931	
12	91 1 30	54.063	- 1.076	+ 54.052	3028.042	70989.668	+ 161.7481	+ 69.7341	- 75.0337	+ 8742.8028	
D	91 12 08	40.182	- 0.843	+ 40.172	3028.225	70990.495	+ 159.8291	+ 163.9591	- 138.2174	+ 6420.8104	
E	139 24 20	49.953	- 37.954	+ 32.526	3066.839	70860.969	+ 121.0321	+ 236.6581	- 8982.1177	+ 3936.6868	
点檢点坐標計算								Σ			
								倍面積			
								面積			

不二測量株式会社

街廓点坐標及街廓面積計算簿

街廓番号 (No. 182-1)

1 2 1

点	方位角(A)	距離(S)	cosA	sinA	x	y	(3) 複緯距	(4) 複經距	(1) × (4)	(2) × (3)
			(1) S cosA	(2) S sinA						
E					3066.839	70860.969				
F	228 31 50	7.335	- 4.857	- 5.496	3071.696	70866.465	+ 78.221	+ 263.688	- 1280.7326	- 429.9026
G	224 57 10	3.478	- 2.461	- 2.457	3074.157	70868.922	+ 70.903	+ 255.735	- 629.3630	- 174.2086
H	220 48 40	4.357	- 3.298	- 2.848	3077.455	70871.770	+ 65.144	+ 250.430	- 825.9181	- 185.5301
I	216 30 40	4.186	- 3.372	- 2.481	3080.827	70874.251	+ 58.474	+ 245.101	- 826.4805	- 145.0739
J	212 0 10	3.295	- 2.794	- 1.746	3083.621	70876.997	+ 52.308	+ 240.874	- 673.0019	- 91.3297
K	208 9 0	3.122	- 2.753	- 1.473	3086.374	70877.470	+ 46.761	+ 237.655	- 654.2642	- 68.8789
L	204 41 50	3.705	- 3.366	- 1.548	3089.740	70879.018	+ 40.642	+ 234.634	- 789.7710	- 62.9130
M	200 18 10	5.046	- 4.733	- 1.751	3094.470	70880.769	+ 32.543	+ 231.335	- 1094.9005	- 56.9827
ZZ	187 2 0	7.578	- 7.246	- 2.220	310.1719	70882.989	+ 20.564	+ 227.364	- 1647.4795	- 45.6520
点檢点坐標計算								Σ		
								倍面積		
								面積		

不二測量株式会社

街廓点坐標及街廓面積計算簿

街廓番号 (No. 1152-1)

点	方位角(A)			距離(S)	cosA	sinA	x	y	(3) 複緯距	(4) 複経距	(1) × (4)	(2) × (3)
					(1) S cosA	(2) S sinA						
22							3101.719	70882.989				
N	197	13	50	43.150	- 41.213	- 12.781	3142.932	70895.770	- 2789.5	+ 212.363	- 8752.1163	+ 356.5259
O	256	25	40	2.731	- 0.641	- 2.655	3143.573	70898.425	- 69.749	+ 196.927	- 126.2302	+ 185.1835
26	22	50	30	11.336	+ 7.708	- 8.312	3135.865	70906.737	- 62.682	+ 185.960	+ 1433.3796	+ 521.0127
27	212	54	30	4.204	+ 2.862	- 3.079	3133.003	70898.816	- 52.112	+ 174.569	+ 499.6164	+ 160.4528
P	312	49	10	26.342	+ 17.904	- 19.322	3115.099	70829.138	- 31.346	+ 152.168	+ 2724.4158	+ 605.6674
Q	304	12	10	26.12	+ 1.468	- 2.160	3113.631	70931.298	- 11.974	+ 130.686	+ 191.8470	+ 25.8638
R	291	11	0	2.468	+ 0.870	- 2.245	3112.761	70933.543	- 9.636	+ 126.281	+ 109.8644	+ 21.6328
S	279	58	30	3.336	+ 0.578	- 3.286	3112.183	70936.829	- 8.182	+ 120.750	+ 89.7935	+ 26.9057
T	267	37	40	3.599	- 0.149	- 3.596	3112.332	70940.425	- 7.259	+ 113.868	- 16.9663	+ 27.8013
U	261	49	10	14.841	- 2.112	- 14.690	3114.444	70955.115	- 10.020	+ 95.582	- 201.8691	+ 147.1938
点檢点坐標計算										Σ		
										倍面積		
										面積		

不二測量株式会社

街廓点坐標及街廓面積計算簿

街廓番号 (N₀₁₁₈₆₂ /)

1 4

点	方位角(A)	距離(S)	cosA	sinA	x	y	(3) 複緯距	(4) 複經距	(1) × (4)	(2) × (3)	
			(1) S cosA	(2) S sinA							
U					3114.444	7025.115					
V	277 45 20	9.544	1.288	-9.457	3113.156	7024.572	-10.844	+71.435	+12.082	+102.557	
A	278 45 50	31.255	4.778	-30.989	3108.378	7024.561	-4.778	+30.989	+148.0654	+148.0654	
点檢点坐標計算								Σ	-26.7146778	-1690.1569	
								倍面積	+62.21.7502	+22182.0060	
								面積	-20492.7276	+20492.7271	
										10246.3585	
											3099.523 04

不二測量株式会社

11~1

114

換地面積計算用紙(不正形用)

角頂	夾角	辺長	方位角	緯距		經距		複經距	倍面積		町地名番
				+	-	+	-		+	-	
7								--			
e	(15.000)	9.091	345.830	8.884		2.006		--	2.306		20.278
8	(19.211)	16.745	91.830		0.334	16.745		+	12.133		4.262
30	(4.829)	8.962	26.010		8.928		0.782	+	28.196		252.641
7	(75.16)	10.165	271.570	0.468		10.657		+-	13.657	6.391	
								--			
				9.262	9.262	16.745	16.745	--			
								--			
								--		6.391	275.171
								--			268.740
								--			52.134.390
								--			
								--			42.652坪
								--			
								--			
								--			3099.691
								--			3099.523
								--			2092

不二測量株式会社

換地面積計算用紙(不正形用)

角頂	夾角	辺長	方位角	緯距		経距		複経距	倍面積		町地名番	
				+	-	+	-		+	-		
√												
←	(111.905)'	21.646	83020	21.404		3226			3.226	29.249		
37	(22.102)'	40.186	94640		2801	40.083			46.535		134.267	
38	(12.603)'	22.915	127134		23743		2803		13.815		1906.204	
√	(223.99)	40.725	27546.52	4220		40.506			40.506	170.935		
				25.624	25.624	43.309	43.309					
										239.916	2040.271	
											1808.257	
											5.900	1435
											272.293	坪

不二測量株式会社

11BL-1

116

換地面積計算用紙(不正形用)

角頂	夾角	辺長	方位角	緯距		経距		複経距	倍面積		町地名番
				+	-	+	-		+	-	
3											
4	(1450)	4.364	8-38-20	4.215		2.655		7-	2.655	2.826	
38	(22.399)	10.226	95-56-53		4.220	10.506		7-	11.816		126.460
61	(10.000)	18.182	185-14-14		17.896		2.605	7-	28.717		1404.507
67	(10.568)	18.306	222-1-45	2.240			18.166	7-	58.944	102.004	
62	(3.391)	6.165	275-7-50	2.551			6.140	7-	24.636	19.084	
64	(17.452)	10.550	8-36-21	10.397		2.225		7-	30.524	108.930	
3	(19.001)	16.365	276-0-8	1.712			16.276	7-	16.276	27.864	
				22.215	22.215	43.189	43.189			590.788	1610.870
											1020.232
										1/2 =	510.116
											144.310坪

不二測量株式会社

11B L-1

12

換地面積計算用紙(不正形用)

角頂	夾角	辺長	方位角	緯距		経距		複経距	倍面積		町地名番
				+	-	+	-		+	-	
2								--			
5	(4.570) ✓	2.226	228-20	2.251		1.254		+	1.254	10.546	
64	(7.001) ✓	18.364	214-8		1.712	16.276		+	18.784		22.158
62	(7.452) ✓	12.550	228-38-21		12.897		2.228	+	22.232		442.529
66	(3.509) ✓	6.280	228-7-50	2.570		6.354		+	24.650	14.050	
65	(3.000) ✓	5.109	228-0	5.393		2.812		+	18.108	10.049	
2	(4.570) ✓	10.000	228-7-50	2.885		9.960		+	9.960	8.914	
								--			
				15.109	15.109	18.342	18.342			126.259	474.687
										9.98	9.28
										≡	169.164
											51.122 坪

不二測量株式会社

換地面積計算用紙(不正形用)

角頂	夾角	辺長	方位角	緯距		經距		複經距	倍面積		町地名番
				+	-	+	-		+	-	
1								--			
2	(3.000)	5.454	234.0	5.390		4.812		+	0.812	4.379	
3	(5.500)	12.200	95.750		0.895	9.960		+	11.504		10.367
4	(3.000)	5.454	108.340		5.390		0.812	+	20.732		111.807
5	(5.500)	12.200	275.750	0.895			9.960	+	9.960	8.914	
								--			
				6.200	6.200	10.770	10.770	--			
								--		13.293	122.174
								--			108.801
								--			Σ = 54.445
								--			
								--			18.468
								--			
								--			
								--			
								--			
								--			

不二測量株式会社

118L-1

191

換地面積計算用紙(不正形用)

角頂	夾角	辺長	方位角	緯距		経距		複経距	倍面積		町地名番
				+	-	+	-		+	-	
A								--			
1	(18.002) ✓	14.549	85-34-2	14.987		2.168		+	2.168	31.191	
66	(15.500) ✓	10.000	95-7-50		2.296	9.960		+	14.296		12.794
62	(13.509) ✓	6.380	95-7-50		2.570	6.352		+	20.610		17.447
67	(13.391) ✓	6.165	95-7-50		2.551	6.140		+	42.104		23.750
61	(10.868) ✓	18.306	97-1-43		2.240	18.168		+	67.412		151.092
U	(18.001) ✓	16.266	128-14-10		16.197		2.344	+	83.236		134.170
T	(15.249) ✓	9.644	272-45-20	1.228			9.457	+	71.435	92.008	
A	(17.245) ✓	21.355	278-45-53	4.778			32.989	+	32.989	148.065	
								--			
				20.150	20.150	42.790	42.790	--		271.264	1543.166
								--			1281.902
								--		$\frac{1}{2} =$	640.951 ✓
								--			
								--			190.887 坪
								--			
								--			

不二測量株式会社

二点間距離方位角計算用紙

11-1 111

() — (62)	(67) — (61)
$1x = 599.6 \quad 1y = 709.22$ $1x = 509.9 \quad 1y = 709.1$ $\Delta x = 89.7 \quad \Delta y = 0.12$ $\div) \Delta x = \dots$ $(\Sigma \Delta^2) S^2 = \dots$ $S = \dots$ $\Delta x = \dots$ $\Delta y = \dots$ $\div) \cos A = \dots$ $S = \dots$	$1x = 599.6 \quad 1y = 709.22$ $1x = 509.9 \quad 1y = 709.1$ $\Delta x = 89.7 \quad \Delta y = 0.12$ $\div) \Delta x = \dots$ $(\Sigma \Delta^2) S^2 = \dots$ $S = \dots$ $\Delta x = \dots$ $\Delta y = \dots$ $\div) \cos A = \dots$ $S = \dots$
$(\Sigma \Delta^2) S^2 = \dots$ $S = \dots$ $\Delta x = \dots$ $\Delta y = \dots$ $\div) \cos A = \dots$ $S = \dots$	$(\Sigma \Delta^2) S^2 = \dots$ $S = \dots$ $\Delta x = \dots$ $\Delta y = \dots$ $\div) \cos A = \dots$ $S = \dots$
$(\Sigma \Delta^2) S^2 = \dots$ $S = \dots$ $\Delta x = \dots$ $\Delta y = \dots$ $\div) \cos A = \dots$ $S = \dots$	$(\Sigma \Delta^2) S^2 = \dots$ $S = \dots$ $\Delta x = \dots$ $\Delta y = \dots$ $\div) \cos A = \dots$ $S = \dots$
$(\Sigma \Delta^2) S^2 = \dots$ $S = \dots$ $\Delta x = \dots$ $\Delta y = \dots$ $\div) \cos A = \dots$ $S = \dots$	$(\Sigma \Delta^2) S^2 = \dots$ $S = \dots$ $\Delta x = \dots$ $\Delta y = \dots$ $\div) \cos A = \dots$ $S = \dots$
$(\Sigma \Delta^2) S^2 = \dots$ $S = \dots$ $\Delta x = \dots$ $\Delta y = \dots$ $\div) \cos A = \dots$ $S = \dots$	$(\Sigma \Delta^2) S^2 = \dots$ $S = \dots$ $\Delta x = \dots$ $\Delta y = \dots$ $\div) \cos A = \dots$ $S = \dots$
$(\Sigma \Delta^2) S^2 = \dots$ $S = \dots$ $\Delta x = \dots$ $\Delta y = \dots$ $\div) \cos A = \dots$ $S = \dots$	$(\Sigma \Delta^2) S^2 = \dots$ $S = \dots$ $\Delta x = \dots$ $\Delta y = \dots$ $\div) \cos A = \dots$ $S = \dots$
$(\Sigma \Delta^2) S^2 = \dots$ $S = \dots$ $\Delta x = \dots$ $\Delta y = \dots$ $\div) \cos A = \dots$ $S = \dots$	$(\Sigma \Delta^2) S^2 = \dots$ $S = \dots$ $\Delta x = \dots$ $\Delta y = \dots$ $\div) \cos A = \dots$ $S = \dots$
$(\Sigma \Delta^2) S^2 = \dots$ $S = \dots$ $\Delta x = \dots$ $\Delta y = \dots$ $\div) \cos A = \dots$ $S = \dots$	$(\Sigma \Delta^2) S^2 = \dots$ $S = \dots$ $\Delta x = \dots$ $\Delta y = \dots$ $\div) \cos A = \dots$ $S = \dots$

11820 / 二点間距離方位角計算用紙

(A)	(Z)	(2)	(4)
$(2) \begin{matrix} 1X = 3026.632 \\ 2X = 3026.632 \\ \Delta X = 7.190 \end{matrix}$ $(\Sigma \Delta^2) S^2 =$ $S =$ $\Delta y =$ $\div) \overline{\text{Cos} A} =$ $S =$	$y = 3026.632$ $y = 3026.632$ $\Delta y = 7.190$ $\div) \Delta x =$ $\text{tand} =$ $\alpha =$ $A =$	$(2) \begin{matrix} 1X = 3026.632 \\ 2X = 3026.632 \\ \Delta X = 7.190 \end{matrix}$ $(\Sigma \Delta^2) S^2 =$ $S =$ $\Delta y =$ $\div) \overline{\text{Cos} A} =$ $S =$	(4) $y = 3026.632$ $y = 3026.632$ $\Delta y = 7.190$ $\div) \Delta x =$ $\text{tand} =$ $\alpha =$ $A =$
$(5) \begin{matrix} 1X = 3026.632 \\ 4X = 3026.632 \\ \Delta X = 7.190 \end{matrix}$ $(\Sigma \Delta^2) S^2 =$ $S =$ $\Delta y =$ $\div) \overline{\text{Cos} A} =$ $S =$	$y = 3026.632$ $y = 3026.632$ $\Delta y = 7.190$ $\div) \Delta x =$ $\text{tand} =$ $\alpha =$ $A =$	(5) $y = 3026.632$ $y = 3026.632$ $\Delta X = 7.190$ $\div) \Delta x =$ $\text{tand} =$ $\alpha =$ $A =$	(6) $y = 3026.632$ $y = 3026.632$ $\Delta y = 7.190$ $\div) \Delta x =$ $\text{tand} =$ $\alpha =$ $A =$
$(7) \begin{matrix} 1X = 3026.632 \\ 2X = 3026.632 \\ \Delta X = 7.190 \end{matrix}$ $(\Sigma \Delta^2) S^2 =$ $S =$ $\Delta y =$ $\div) \overline{\text{Cos} A} =$ $S =$	$y = 3026.632$ $y = 3026.632$ $\Delta y = 7.190$ $\div) \Delta x =$ $\text{tand} =$ $\alpha =$ $A =$	(7) $y = 3026.632$ $y = 3026.632$ $\Delta X = 7.190$ $\div) \Delta x =$ $\text{tand} =$ $\alpha =$ $A =$	(8) $y = 3026.632$ $y = 3026.632$ $\Delta y = 7.190$ $\div) \Delta x =$ $\text{tand} =$ $\alpha =$ $A =$

二点間距離方位角計算用紙

(E)	(F)	(G)
$(F) x = 30871.676$ $(E) x = 30868.868$ $\Delta x = -2.808$ $(\Sigma \Delta^2) S^2 =$ $S =$ $\Delta x =$ $\div \sqrt{\text{Cos} A} = \frac{2.808}{0.272} \div \sqrt{\text{Sin} A} = \frac{2.808}{0.272}$ $S =$	$y = 20876.444$ $y = 20866.868$ $\Delta y = -9.576$ $\div \Delta x =$ $\text{tand} =$ $\alpha =$ $A =$ $\Delta x =$ $\div \sqrt{\text{Cos} A} = \frac{9.576}{0.272} \div \sqrt{\text{Sin} A} = \frac{9.576}{0.272}$ $S =$	$y = 20876.444$ $y = 20866.868$ $\Delta y = -9.576$ $\div \Delta x =$ $\text{tand} =$ $\alpha =$ $A =$ $\Delta x =$ $\div \sqrt{\text{Cos} A} = \frac{9.576}{0.272} \div \sqrt{\text{Sin} A} = \frac{9.576}{0.272}$ $S =$
$(G) x = 30871.676$ $(H) x = 30871.676$ $\Delta x =$ $(\Sigma \Delta^2) S^2 =$ $S =$ $\Delta x =$ $\div \sqrt{\text{Cos} A} = \frac{0.272}{0.272} \div \sqrt{\text{Sin} A} = \frac{0.272}{0.272}$ $S =$	$y = 20876.444$ $y = 20876.444$ $\Delta y =$ $\div \Delta x =$ $\text{tand} =$ $\alpha =$ $A =$ $\Delta x =$ $\div \sqrt{\text{Cos} A} = \frac{0.272}{0.272} \div \sqrt{\text{Sin} A} = \frac{0.272}{0.272}$ $S =$	$(H) x = 30871.676$ $(I) x = 30871.676$ $\Delta x =$ $(\Sigma \Delta^2) S^2 =$ $S =$ $\Delta x =$ $\div \sqrt{\text{Cos} A} = \frac{0.272}{0.272} \div \sqrt{\text{Sin} A} = \frac{0.272}{0.272}$ $S =$
$(I) x = 30871.676$ $(J) x = 30871.676$ $\Delta x =$ $(\Sigma \Delta^2) S^2 =$ $S =$ $\Delta x =$ $\div \sqrt{\text{Cos} A} = \frac{0.272}{0.272} \div \sqrt{\text{Sin} A} = \frac{0.272}{0.272}$ $S =$	$y = 20876.444$ $y = 20876.444$ $\Delta y =$ $\div \Delta x =$ $\text{tand} =$ $\alpha =$ $A =$ $\Delta x =$ $\div \sqrt{\text{Cos} A} = \frac{0.272}{0.272} \div \sqrt{\text{Sin} A} = \frac{0.272}{0.272}$ $S =$	$(J) x = 30871.676$ $(K) x = 30871.676$ $\Delta x =$ $(\Sigma \Delta^2) S^2 =$ $S =$ $\Delta x =$ $\div \sqrt{\text{Cos} A} = \frac{0.272}{0.272} \div \sqrt{\text{Sin} A} = \frac{0.272}{0.272}$ $S =$

11022 / 二点間距離方位角計算用紙

(U)	(V)	(07)	(A)
$(V) x = 3047.1568$ $(U) x = 3047.1568$ $\Delta x = 0$ $(\Sigma \Delta^2) S^2 =$ $S =$ $\Delta y = 0$ $\div \sqrt{\cos A} =$ $S =$	$y = 2094.561$ $y = 2094.561$ $\Delta y = 0$ $\div \Delta x =$ $\tan \alpha =$ $\alpha =$ $A =$ $\Delta y =$ $\div \sqrt{\sin A} =$ $S =$	$(07) x = 3047.1568$ $(37) x = 3047.1568$ $\Delta x = 0$ $(\Sigma \Delta^2) S^2 =$ $S =$ $\Delta y = 0$ $\div \sqrt{\cos A} =$ $S =$	$y = 2094.561$ $y = 2094.561$ $\Delta y = 0$ $\div \Delta x =$ $\tan \alpha =$ $\alpha =$ $A =$ $\Delta y =$ $\div \sqrt{\sin A} =$ $S =$
$(06) x = 3047.1568$ $(6) x = 3047.1568$ $\Delta x = 0$ $(\Sigma \Delta^2) S^2 =$ $S =$ $\Delta y = 0$ $\div \sqrt{\cos A} =$ $S =$	$y = 2094.561$ $y = 2094.561$ $\Delta y = 0$ $\div \Delta x =$ $\tan \alpha =$ $\alpha =$ $A =$ $\Delta y =$ $\div \sqrt{\sin A} =$ $S =$	$(02) x = 3047.1568$ $(32) x = 3047.1568$ $\Delta x = 0$ $(\Sigma \Delta^2) S^2 =$ $S =$ $\Delta y = 0$ $\div \sqrt{\cos A} =$ $S =$	$y = 2094.561$ $y = 2094.561$ $\Delta y = 0$ $\div \Delta x =$ $\tan \alpha =$ $\alpha =$ $A =$ $\Delta y =$ $\div \sqrt{\sin A} =$ $S =$
$(03) x = 3047.1568$ $(33) x = 3047.1568$ $\Delta x = 0$ $(\Sigma \Delta^2) S^2 =$ $S =$ $\Delta y = 0$ $\div \sqrt{\cos A} =$ $S =$	$y = 2094.561$ $y = 2094.561$ $\Delta y = 0$ $\div \Delta x =$ $\tan \alpha =$ $\alpha =$ $A =$ $\Delta y =$ $\div \sqrt{\sin A} =$ $S =$	$(07) x = 3047.1568$ $(37) x = 3047.1568$ $\Delta x = 0$ $(\Sigma \Delta^2) S^2 =$ $S =$ $\Delta y = 0$ $\div \sqrt{\cos A} =$ $S =$	$y = 2094.561$ $y = 2094.561$ $\Delta y = 0$ $\div \Delta x =$ $\tan \alpha =$ $\alpha =$ $A =$ $\Delta y =$ $\div \sqrt{\sin A} =$ $S =$

1122 / 二点間距離方位角計算用紙

<p>(4) ————— (38) ————— (4)</p> <p>(38) X = 3088, 065 (4) X = 3088, 065 $\Delta X = -4, 220$ $(\Sigma \Delta^2) S^2 =$ $S =$</p> <p>$\Delta Y =$ $\div \sqrt{\text{Cos} A} =$ $S =$</p>	<p>(38) X = 3088, 065 (38) X = 3088, 065 $\Delta X = -4, 220$ $(\Sigma \Delta^2) S^2 =$ $S =$</p> <p>$\Delta Y =$ $\div \sqrt{\text{Cos} A} =$ $S =$</p>
<p>(12) ————— (36) ————— (12)</p> <p>(36) X = 3088, 065 (12) X = 3088, 065 $\Delta X = -2, 748$ $(\Sigma \Delta^2) S^2 =$ $S =$</p> <p>$\Delta Y =$ $\div \sqrt{\text{Cos} A} =$ $S =$</p>	<p>(36) X = 3088, 065 (36) X = 3088, 065 $\Delta X = -2, 748$ $(\Sigma \Delta^2) S^2 =$ $S =$</p> <p>$\Delta Y =$ $\div \sqrt{\text{Cos} A} =$ $S =$</p>
<p>(45) ————— (45) ————— (45)</p> <p>(45) X = 3088, 065 (45) X = 3088, 065 $\Delta X = -2, 748$ $(\Sigma \Delta^2) S^2 =$ $S =$</p> <p>$\Delta Y =$ $\div \sqrt{\text{Cos} A} =$ $S =$</p>	<p>(45) X = 3088, 065 (45) X = 3088, 065 $\Delta X = -2, 748$ $(\Sigma \Delta^2) S^2 =$ $S =$</p> <p>$\Delta Y =$ $\div \sqrt{\text{Cos} A} =$ $S =$</p>
<p>(49) ————— (49) ————— (49)</p> <p>(49) X = 3088, 065 (49) X = 3088, 065 $\Delta X = -2, 748$ $(\Sigma \Delta^2) S^2 =$ $S =$</p> <p>$\Delta Y =$ $\div \sqrt{\text{Cos} A} =$ $S =$</p>	<p>(49) X = 3088, 065 (49) X = 3088, 065 $\Delta X = -2, 748$ $(\Sigma \Delta^2) S^2 =$ $S =$</p> <p>$\Delta Y =$ $\div \sqrt{\text{Cos} A} =$ $S =$</p>

1122 二点間距離方位角計算用紙

(50)	(51)	(51)	(22)
$(51)X = 3085, 284$ $(50)X = 3088, 288$ $\Delta X = -2, 029$ $(\Sigma \Delta^2)S^2 =$ $S =$ $\Delta Y =$ $\div) \text{Cos} A =$ $S =$	$y = 2088, 227$ $y = 2088, 227$ $\Delta y = 0$ $\div) \Delta X =$ $\text{tand} =$ $\alpha =$ $A =$ $(\Sigma \Delta^2)S^2 =$ $S =$ $\Delta X =$ $\div) \text{Cos} A =$ $S =$	$(22)X = 3101, 218$ $(51)X = 3088, 288$ $\Delta X = -12, 070$ $(\Sigma \Delta^2)S^2 =$ $S =$ $\Delta Y =$ $\div) \text{Cos} A =$ $S =$	$y = 2088, 227$ $y = 2088, 227$ $\Delta y = 0$ $\div) \Delta X =$ $\text{tand} =$ $\alpha =$ $A =$ $(\Sigma \Delta^2)S^2 =$ $S =$ $\Delta X =$ $\div) \text{Cos} A =$ $S =$
(40)	(50)	(50)	(60)
$(50)X = 3088, 288$ $(40)X = 3086, 688$ $\Delta X = -1, 400$ $(\Sigma \Delta^2)S^2 =$ $S =$ $\Delta Y =$ $\div) \text{Cos} A =$ $S =$	$y = 2088, 227$ $y = 2088, 227$ $\Delta y = 0$ $\div) \Delta X =$ $\text{tand} =$ $\alpha =$ $A =$ $(\Sigma \Delta^2)S^2 =$ $S =$ $\Delta X =$ $\div) \text{Cos} A =$ $S =$	$(60)X = 3088, 288$ $(40)X = 3086, 688$ $\Delta X = -1, 400$ $(\Sigma \Delta^2)S^2 =$ $S =$ $\Delta Y =$ $\div) \text{Cos} A =$ $S =$	$y = 2088, 227$ $y = 2088, 227$ $\Delta y = 0$ $\div) \Delta X =$ $\text{tand} =$ $\alpha =$ $A =$ $(\Sigma \Delta^2)S^2 =$ $S =$ $\Delta X =$ $\div) \text{Cos} A =$ $S =$
(60)	(59)	(59)	(58)
$(59)X = 3101, 218$ $(60)X = 3088, 288$ $\Delta X = -12, 070$ $(\Sigma \Delta^2)S^2 =$ $S =$ $\Delta Y =$ $\div) \text{Cos} A =$ $S =$	$y = 2088, 227$ $y = 2088, 227$ $\Delta y = 0$ $\div) \Delta X =$ $\text{tand} =$ $\alpha =$ $A =$ $(\Sigma \Delta^2)S^2 =$ $S =$ $\Delta X =$ $\div) \text{Cos} A =$ $S =$	$(58)X = 3101, 218$ $(59)X = 3088, 288$ $\Delta X = -12, 070$ $(\Sigma \Delta^2)S^2 =$ $S =$ $\Delta Y =$ $\div) \text{Cos} A =$ $S =$	$y = 2088, 227$ $y = 2088, 227$ $\Delta y = 0$ $\div) \Delta X =$ $\text{tand} =$ $\alpha =$ $A =$ $(\Sigma \Delta^2)S^2 =$ $S =$ $\Delta X =$ $\div) \text{Cos} A =$ $S =$

11. 2. ~ / 二点間距離方位角計算用紙

(58)	(57)	(57)	(R)
(57) X = 3103.604 (58) X = 3103.411 $\Delta X = -0.193$	(57) X = 3112.261 (57) X = 3103.658 $\Delta X = -8.643$	(57) X = 3112.261 (57) X = 3103.658 $\Delta X = -8.643$	(R) X = 2022.740 (57) X = 2022.668 $\Delta X = -0.072$
($\Sigma \Delta^2$) S ² = S =	($\Sigma \Delta^2$) S ² = S =	($\Sigma \Delta^2$) S ² = S =	($\Sigma \Delta^2$) S ² = S =
$\Delta X =$ $\div \cos A = 0.27666$ S = 2.812	$\Delta X =$ $\div \cos A = 0.86888$ S = 2.810	$\Delta X =$ $\div \cos A = 0.86888$ S = 2.810	$\Delta X =$ $\div \cos A = 0.86888$ S = 2.810
$\Delta Y =$ $\div \sin A = 0.86888$ S = 2.810	$\Delta Y =$ $\div \sin A = 0.86888$ S = 2.810	$\Delta Y =$ $\div \sin A = 0.86888$ S = 2.810	$\Delta Y =$ $\div \sin A = 0.86888$ S = 2.810
$\tan \alpha = -0.220$ $\alpha = -12.200$ A = 17.141	$\tan \alpha = -0.220$ $\alpha = -12.200$ A = 17.141	$\tan \alpha = -0.220$ $\alpha = -12.200$ A = 17.141	$\tan \alpha = -0.220$ $\alpha = -12.200$ A = 17.141
(58)	(56)	(56)	(55)
(56) X = 3113.837 (58) X = 3103.411 $\Delta X = -10.426$	(56) X = 3113.837 (56) X = 3112.837 $\Delta X = -1.000$	(56) X = 3113.837 (56) X = 3112.837 $\Delta X = -1.000$	(56) X = 2022.740 (56) X = 2022.837 $\Delta X = -0.097$
($\Sigma \Delta^2$) S ² = S =	($\Sigma \Delta^2$) S ² = S =	($\Sigma \Delta^2$) S ² = S =	($\Sigma \Delta^2$) S ² = S =
$\Delta X =$ $\div \cos A = 0.27666$ S = 2.810	$\Delta X =$ $\div \cos A = 0.27666$ S = 2.810	$\Delta X =$ $\div \cos A = 0.27666$ S = 2.810	$\Delta X =$ $\div \cos A = 0.27666$ S = 2.810
$\Delta Y =$ $\div \sin A = 0.86888$ S = 2.810	$\Delta Y =$ $\div \sin A = 0.86888$ S = 2.810	$\Delta Y =$ $\div \sin A = 0.86888$ S = 2.810	$\Delta Y =$ $\div \sin A = 0.86888$ S = 2.810
$\tan \alpha = -0.220$ $\alpha = -12.200$ A = 17.141	$\tan \alpha = -0.220$ $\alpha = -12.200$ A = 17.141	$\tan \alpha = -0.220$ $\alpha = -12.200$ A = 17.141	$\tan \alpha = -0.220$ $\alpha = -12.200$ A = 17.141
(55)	(27)	(27)	(C)
(27) X = 3103.604 (57) X = 3103.411 $\Delta X = -0.193$	(27) X = 2022.966 (57) X = 2022.668 $\Delta X = -0.298$	(27) X = 2022.966 (57) X = 2022.668 $\Delta X = -0.298$	(C) X = 2022.966 (57) X = 2022.668 $\Delta X = -0.298$
($\Sigma \Delta^2$) S ² = S =	($\Sigma \Delta^2$) S ² = S =	($\Sigma \Delta^2$) S ² = S =	($\Sigma \Delta^2$) S ² = S =
$\Delta X =$ $\div \cos A = 0.27666$ S = 2.810	$\Delta X =$ $\div \cos A = 0.27666$ S = 2.810	$\Delta X =$ $\div \cos A = 0.27666$ S = 2.810	$\Delta X =$ $\div \cos A = 0.27666$ S = 2.810
$\Delta Y =$ $\div \sin A = 0.86888$ S = 2.810	$\Delta Y =$ $\div \sin A = 0.86888$ S = 2.810	$\Delta Y =$ $\div \sin A = 0.86888$ S = 2.810	$\Delta Y =$ $\div \sin A = 0.86888$ S = 2.810
$\tan \alpha = -0.220$ $\alpha = -12.200$ A = 17.141	$\tan \alpha = -0.220$ $\alpha = -12.200$ A = 17.141	$\tan \alpha = -0.220$ $\alpha = -12.200$ A = 17.141	$\tan \alpha = -0.220$ $\alpha = -12.200$ A = 17.141
(55)	(27)	(27)	(C)
(27) X = 3103.604 (57) X = 3103.411 $\Delta X = -0.193$	(27) X = 2022.966 (57) X = 2022.668 $\Delta X = -0.298$	(27) X = 2022.966 (57) X = 2022.668 $\Delta X = -0.298$	(C) X = 2022.966 (57) X = 2022.668 $\Delta X = -0.298$
($\Sigma \Delta^2$) S ² = S =	($\Sigma \Delta^2$) S ² = S =	($\Sigma \Delta^2$) S ² = S =	($\Sigma \Delta^2$) S ² = S =
$\Delta X =$ $\div \cos A = 0.27666$ S = 2.810	$\Delta X =$ $\div \cos A = 0.27666$ S = 2.810	$\Delta X =$ $\div \cos A = 0.27666$ S = 2.810	$\Delta X =$ $\div \cos A = 0.27666$ S = 2.810
$\Delta Y =$ $\div \sin A = 0.86888$ S = 2.810	$\Delta Y =$ $\div \sin A = 0.86888$ S = 2.810	$\Delta Y =$ $\div \sin A = 0.86888$ S = 2.810	$\Delta Y =$ $\div \sin A = 0.86888$ S = 2.810
$\tan \alpha = -0.220$ $\alpha = -12.200$ A = 17.141	$\tan \alpha = -0.220$ $\alpha = -12.200$ A = 17.141	$\tan \alpha = -0.220$ $\alpha = -12.200$ A = 17.141	$\tan \alpha = -0.220$ $\alpha = -12.200$ A = 17.141

115A~1

二点間距離方位角計算用紙

(15)	(42)	(16)	(4)
$1x = 3446345$ $1x = 3028731$ $\Delta x = -17572$ $(\Sigma \Delta^2) S^2 =$ $S =$ $\Delta x =$ $\div \cos A =$ $S =$	$y = 7089168$ $y = 7089881$ $\Delta y = -17572$ $(\Sigma \Delta^2) S^2 =$ $S =$ $\Delta y =$ $\div \sin A =$ $S =$	$y = 7089168$ $y = 7089881$ $\Delta y = -17572$ $\div \Delta x =$ $\tan \alpha =$ $\alpha =$ $A =$	$y = 7089168$ $y = 7089881$ $\Delta y = -17572$ $\div \Delta x =$ $\tan \alpha =$ $\alpha =$ $A =$
(18)	(48)	(19)	(49)
$1x = 3471749$ $1x = 3049191$ $\Delta x = -17572$ $(\Sigma \Delta^2) S^2 =$ $S =$ $\Delta x =$ $\div \cos A =$ $S =$	$y = 7089168$ $y = 7089881$ $\Delta y = -17572$ $(\Sigma \Delta^2) S^2 =$ $S =$ $\Delta y =$ $\div \sin A =$ $S =$	$y = 7089168$ $y = 7089881$ $\Delta y = -17572$ $\div \Delta x =$ $\tan \alpha =$ $\alpha =$ $A =$	$y = 7089168$ $y = 7089881$ $\Delta y = -17572$ $\div \Delta x =$ $\tan \alpha =$ $\alpha =$ $A =$
(29)	(60)	(45)	(46)
$1x = 3086435$ $1x = 3086435$ $\Delta x = -$ $(\Sigma \Delta^2) S^2 =$ $S =$ $\Delta x =$ $\div \cos A =$ $S =$	$y = 7089168$ $y = 7089881$ $\Delta y = -17572$ $(\Sigma \Delta^2) S^2 =$ $S =$ $\Delta y =$ $\div \sin A =$ $S =$	$y = 7089168$ $y = 7089881$ $\Delta y = -17572$ $\div \Delta x =$ $\tan \alpha =$ $\alpha =$ $A =$	$y = 7089168$ $y = 7089881$ $\Delta y = -17572$ $\div \Delta x =$ $\tan \alpha =$ $\alpha =$ $A =$

二点間距離方位角計算用紙

(30)	(0 /)	(10)	(33)
$1x = 3036232$ $1x = 3036232$ $\Delta x = -20856$ $(\Sigma \Delta^2) S^2 =$ $S =$	$y = 70920900$ $y = 70920900$ $\Delta y = 70920900$ $(\Sigma \Delta^2) S^2 =$ $S =$	$1x = 304848$ $1x = 3037836$ $\Delta x = -20856$ $(\Sigma \Delta^2) S^2 =$ $S =$	$y = 70920900$ $y = 70920900$ $\Delta y = -20856$ $(\Sigma \Delta^2) S^2 =$ $S =$
$\Delta x =$ $\div) \text{Cos} A =$ $S =$	$\Delta y =$ $\div) \text{Sin} A =$ $S =$	$\Delta x =$ $\div) \text{Cos} A =$ $S =$	$\Delta y =$ $\div) \text{Sin} A =$ $S =$
$\text{tand} \alpha =$ $\alpha =$ $A =$	$\text{tand} \alpha =$ $\alpha =$ $A =$	$\text{tand} \alpha =$ $\alpha =$ $A =$	$\text{tand} \alpha =$ $\alpha =$ $A =$
(//)	(35)	(5)	(37)
$1x = 3049308$ $1x = 3037836$ $\Delta x = -21247$ $(\Sigma \Delta^2) S^2 =$ $S =$	$y = 70920900$ $y = 70920900$ $\Delta y = -21247$ $(\Sigma \Delta^2) S^2 =$ $S =$	$1x = 3057408$ $1x = 3037836$ $\Delta x = -21247$ $(\Sigma \Delta^2) S^2 =$ $S =$	$y = 70920900$ $y = 70920900$ $\Delta y = -21247$ $(\Sigma \Delta^2) S^2 =$ $S =$
$\Delta x =$ $\div) \text{Cos} A =$ $S =$	$\Delta y =$ $\div) \text{Sin} A =$ $S =$	$\Delta x =$ $\div) \text{Cos} A =$ $S =$	$\Delta y =$ $\div) \text{Sin} A =$ $S =$
$\text{tand} \alpha =$ $\alpha =$ $A =$	$\text{tand} \alpha =$ $\alpha =$ $A =$	$\text{tand} \alpha =$ $\alpha =$ $A =$	$\text{tand} \alpha =$ $\alpha =$ $A =$
(14)	(43)	(43)	(44)
$1x = 3048232$ $1x = 3028464$ $\Delta x = -20856$ $(\Sigma \Delta^2) S^2 =$ $S =$	$y = 70920900$ $y = 70920900$ $\Delta y = -20856$ $(\Sigma \Delta^2) S^2 =$ $S =$	$1x = 305448$ $1x = 3028464$ $\Delta x = -20856$ $(\Sigma \Delta^2) S^2 =$ $S =$	$y = 70920900$ $y = 70920900$ $\Delta y = -20856$ $(\Sigma \Delta^2) S^2 =$ $S =$
$\Delta x =$ $\div) \text{Cos} A =$ $S =$	$\Delta y =$ $\div) \text{Sin} A =$ $S =$	$\Delta x =$ $\div) \text{Cos} A =$ $S =$	$\Delta y =$ $\div) \text{Sin} A =$ $S =$
$\text{tand} \alpha =$ $\alpha =$ $A =$	$\text{tand} \alpha =$ $\alpha =$ $A =$	$\text{tand} \alpha =$ $\alpha =$ $A =$	$\text{tand} \alpha =$ $\alpha =$ $A =$

二点間距離方位角計算用紙

(M)	(22)	(22)	(N)
$(1x = 2161719)$ $(1x = 2094483)$ $\Delta x = 2161719 - 2094483 = 67236$ $(\Sigma \Delta^2) S^2 =$ $S =$	$(y = 70921989)$ $(y = 7080769)$ $\Delta y = 70921989 - 7080769 = 63854$ $\div \Delta x =$ $\tan \alpha =$ $\alpha =$ $A =$	$(1x = 2161719)$ $(1x = 2094483)$ $\Delta x = 2161719 - 2094483 = 67236$ $(\Sigma \Delta^2) S^2 =$ $S =$	$(y = 70921989)$ $(y = 7080769)$ $\Delta y = 70921989 - 7080769 = 63854$ $\div \Delta x =$ $\tan \alpha =$ $\alpha =$ $A =$
$\Delta x =$ $\div \cos A =$ $S =$	$\Delta y =$ $\div \sin A =$ $S =$	$\Delta x =$ $\div \cos A =$ $S =$	$\Delta y =$ $\div \sin A =$ $S =$
(9)	(32)	(34)	(36)
$(1x = 20951516)$ $(1x = 2096824)$ $\Delta x = 20951516 - 2096824 = 188547$ $(\Sigma \Delta^2) S^2 =$ $S =$	$(y = 70951516)$ $(y = 2096824)$ $\Delta y = 70951516 - 2096824 = 688547$ $\div \Delta x =$ $\tan \alpha =$ $\alpha =$ $A =$	$(1x = 20951516)$ $(1x = 2096824)$ $\Delta x = 20951516 - 2096824 = 188547$ $(\Sigma \Delta^2) S^2 =$ $S =$	$(y = 70951516)$ $(y = 2096824)$ $\Delta y = 70951516 - 2096824 = 688547$ $\div \Delta x =$ $\tan \alpha =$ $\alpha =$ $A =$
$\Delta x =$ $\div \cos A =$ $S =$	$\Delta y =$ $\div \sin A =$ $S =$	$\Delta x =$ $\div \cos A =$ $S =$	$\Delta y =$ $\div \sin A =$ $S =$
$()$	$()$	$()$	$()$
$(1x =)$ $(1x =)$ $\Delta x =$ $(\Sigma \Delta^2) S^2 =$ $S =$	$(y =)$ $(y =)$ $\Delta y =$ $\div \Delta x =$ $\tan \alpha =$ $\alpha =$ $A =$	$(1x =)$ $(1x =)$ $\Delta x =$ $(\Sigma \Delta^2) S^2 =$ $S =$	$(y =)$ $(y =)$ $\Delta y =$ $\div \Delta x =$ $\tan \alpha =$ $\alpha =$ $A =$
$\Delta x =$ $\div \cos A =$ $S =$	$\Delta y =$ $\div \sin A =$ $S =$	$\Delta x =$ $\div \cos A =$ $S =$	$\Delta y =$ $\div \sin A =$ $S =$

二点間距離方位角計算用紙

(50) ——— (2 /)	(25) ——— (26)
$1x = 2097.654$ $1x = 2008.235$ $\Delta x = -89.419$ $\div \Delta x = -$ $(\Sigma \Delta^2) S^2 =$ $S =$ $\Delta y =$ $\div \text{Cos} A =$ $S =$	$1x = 2135.845$ $1x = 3112.870$ $\Delta x = -977.025$ $\div \Delta x = -$ $(\Sigma \Delta^2) S^2 =$ $S =$ $\Delta y =$ $\div \text{Cos} A =$ $S =$
(/) ——— (62)	(62) ——— (6 /)
$1x = 2097.679$ $1x = 2083.893$ $\Delta x = -13.786$ $\div \Delta x = -$ $(\Sigma \Delta^2) S^2 =$ $S =$ $\Delta y =$ $\div \text{Cos} A =$ $S =$	$1x = 2098.221$ $1x = 2072.429$ $\Delta x = -25.792$ $\div \Delta x = -$ $(\Sigma \Delta^2) S^2 =$ $S =$ $\Delta y =$ $\div \text{Cos} A =$ $S =$
(54) ——— (62)	() ——— ()
$1x = 2097.679$ $1x = 2083.893$ $\Delta x = -13.786$ $\div \Delta x = -$ $(\Sigma \Delta^2) S^2 =$ $S =$ $\Delta y =$ $\div \text{Cos} A =$ $S =$	$1x = 2098.221$ $1x = 2072.429$ $\Delta x = -25.792$ $\div \Delta x = -$ $(\Sigma \Delta^2) S^2 =$ $S =$ $\Delta y =$ $\div \text{Cos} A =$ $S =$

(B.L)

換地面積計算用紙

角頂	夾角	辺長	方位角	x		y		複経距	倍面積		町地名番
				+	-	+	-		+	-	
14								--			(15)
①		2.034	91 12 08		0.023	2.034		+	2.034		0.087
②		9.450	181 02 00		9.648		0.170	+	3.898		36.828
③		13.670	91 12 08		0.282	13.667		+	17.394		4.974
42		8.126	181 02 00		8.125		0.147	+	30.913		251.168
41		6.179	126 53 20		3.709	4.942		-	35.708		132.440
44		6.264	136 36 18		4.552	4.304		+	44.954		204.630
43		28.484	281 44 0	5.724			27.889	+	21.369	123.778	.
14		20.620	9 05 30	20.371		3.260		-	3.260		66.409
				26.163	26.164 ³			--		123.778	696.536
								--			500.758
								--			286.379
								--			
								--			
								--			
								--			
								--			

117

換地面積計算用紙(不正形用)

角頂	夾角	辺長	方位角	緯距		經距		複經距	倍面積		町地名番
				+	-	+	-		+	-	
42								--			
15	(96.67)	17.576	1.20	17.576		0.317		+	0.317	5.570	
2	(4.063)	7.387	91.210		0.152	7.386		+	0.220	1.285	
14	(2.701)	4.911	39.2420		3.729	3.196		+	10.602	69.386	
41	(10.14)	12.370	198.520		17.379		5.957	+	15.041	275.617	
42	(3.358)	6.177	306.5320	0.709			4.942	+	4.942	10.329	
								--			
				21.282	21.282	10.899	10.899	--			
								--	23.899	246.210	
								--		323.319	
								--		30161.159	
								--		40.750	
								--			
								--			
								--			
								--			
								--			
								--			
								--			

不二測量株式会社

11-1BL

換地面積計算用紙
(不正形用)

角頂	夾角	辺長	方位角	緯距		経距		複経距	倍面積		町地名番
				+	-	+	-		+	-	
	⑤										⑤
54											
53		12.933	172549	12.009		0.874					
24		13.583	107250		3.983	12.987					
25		12.545	197350		11.982		3.716				
54		13.636	2852510	3.626			13.145				
										173.327	

不二測量株式会社

換地面積計算用紙 (不正形用)

不二測量株式会社

角頂	夾角	辺長	方位角	緯距		経距		複経距	倍面積		町地名番
				+	-	+	-		+	-	
	⊙										⊙
27											
55		17.141	7 5 50	17.010		2.118					
56		3.788	326 25 20	3.156			2.095				
58		21.830	298 31 40	10.426			19.180				
59		5.803	73 46 50	1.621		5.572					
60		5.342	15 35 40	5.145		1.436					
40		9.028	3 31 50	9.010		0.564					
50		13.005	99 17 30		2.100	12.834					
51		15.523	116 55 30		7.029	13.840					
52		17.202	198 10 10		16.344	3.364					
53		5.095	200 54 40		4.759	1.818					
54		12.933	97 25 49		12.339	3.874					
26		6.727	188 9 20		6.659	0.954					
27		4.204	312 54 30	2.862		3.079					
									662.252		

換地面積計算用紙(不正形用)

角頂	夾角	辺長	方位角	緯距		經距		複經距	倍面積		町地名番
				+	-	+	-		+	-	
R								--			
S	(5.485)	9.99	103610	9.711		2.280		+	2.280	22.120	
S	(1.270)	2.210	705630	0.639		2.220		+	2.220	4.421	
S	(12.006)	21.820	1183140		1.0426	1.9180		+	2.330	295.264	
S	(2.083)	3.780	1462520		0.156	2.094		+	4.959	156.521	
S	(9.428)	17.14	187550		17.010	2.118		+	4.9572	143.219	
P	(14.488)	26.39	3124910	17.904		1.9322		+	2.132	503.675	
Q	(14.377)	26.12	3041210	1.468		2.160		+	6.650	1.762	
R	(1.324)	2.408	391110	0.270		2.245		+	2.245	1.953	
								--			
				30.592	30.592	2.5845	2.5845	--		542.631	1295.004
								--			752.373
								--			5276.1065
								--			
								--			113.796
								--			

不二測量株式会社

1/20

換地面積計算用紙(不正形用)

角頂	夾角	辺長	方位角	緯距		經距		複經距	倍面積		町地名番
				+	-	+	-		+	-	
44											
44	(10.246)	10.630	127.50	12.206		5.795		+	5.795	102.600	
47	(10.000)	10.182	"	17.280		4.656		-	17.244	288.010	
48	(26.96)	15.814	109.2420		12.006	10.288		+	33.180		388.478
48	(16.738)	30.434	206.0340		27.417		10.211	+	30.267		829.030
45	(5.227)	9.613	297.2900	11.438			8.528	+	8.528	37.047	
								--			
				39.423	39.423	21.739	21.739	--		438.457	1228.349
								--			789.862
								--			380.926
								--			
								--			119.465
								--			
								--			
								--			
								--			
								--			

不二測量株式会社

換地面積計算用紙(不正形用)

角頂	夾角	辺長	方位角	緯距		經距		複經距	倍面積		町地名番
				+	-	+	-		+	-	
48								--			
18	(6.708)	30.434	254.340	27.417		10.211		+	13.211	362.205	
19	(6.587)	11.277	109.2470		9.094	7.794		+	34.214		311.160
49	(4.362)	26.112	210.630		2.680		14.854	+	27.854		595.246
48	(4.000)	7.272	297.2930	3.057			6.451	+	6.451	21.656	
								--			
				30.774	30.774	21.005	21.005	--			
								--		323.881	904.406
								--			522.545
								--			32261.2725
								--			
								--			79.034
								--			
								--			
								--			
								--			
								--			

不二測量株式会社

換地面積計算用紙(不正形用)

角頂	夾角	辺長	方位角	緯距		経距		複経距	倍面積		町地名番
				+	-	+	-		+	-	
								--			
49								+			
49 (14362)		26.112	33530	21.680		14.554		+	14.554	315.530	
E (8.123)		11.132	138220		8.454	7.249		+	36.253		307.370
F (8.238)		7.235	228350		4.857	5.496		+	30.102		105.261
G (1.813)		3.478	2215710		2.461	2.457		+	30.149		24.496
H (2.376)		4.357	2204840		3.798	2.828		+	24.844		51.935
I (2.202)		4.186	2162040		3.520	2.821		+	19.575		65.804
J (1.812)		3.295	212010		2.794	1.246		+	15.281		42.714
49 (14206)		7.648	2974200		3.556	6.771		+	6.771	24.977	
								--			
				2.5226	2.5226	2.799	2.799	--		339.607	1757.038
								--			417.431
								--			3208.7155
								--			
								--			23.136
								--			

不二測量株式会社

換地面積計算用紙(不正形用)

角頂	夾角	辺長	方位角	緯距		經距		複經距	倍面積		町地名番
				+	-	+	-		+	-	
47								--			
46	(1000)°	1.818	241440	1.658		0.746		+	0.746	1.236	
45	(5002)°	9094	44130	2.518		6.342		+	7.134	51.062	
42	(5257)°	9613	1172930		4.438	2.522		+	22.704	100.760	
49	(4000)°	7.373	"		3.257	8.451		+	37.683	126.501	
J	(4206)°	7.448	174230		3.556	6.771		+	50.915	181.018	
K	(2717)°	3.122	20890		3.253	1.470		+	51.203	134.726	
L	(2038)°	2.709	206450		3.266	1.548		+	53.102	179.010	
21	(1944)°	3.534	240810		3.341	1.226		+	50.408	167.052	
47	(15200)°	27636	297848	12.608		24.591		+	24.591	310.043	
								--			
				20.784	20.784	28.008	28.008	--	262.341	909.067	
								--		546.726	
								--		273.363	
								--			
								--		82.692	

不二測量株式会社

124

換地面積計算用紙(不正形用)

角頂	夾角	辺長	方位角	緯距		經距		複經距	倍面積		町地名番
				+	-	+	-		+	-	
6								--			
47	(5.000)	9.091	34.1440	8.289		3.702		+	3.702	30.934	
21	(15.200)	27.636	117.840		12.608	24.591		-	22.035		404.149
M	(1.032)	1.512	200.1810		1.419		0.525	+	56.121		99.635
22	(4.168)	7.578	197.20		7.246		2.220	+	33.374		326.762
51	(2.239)	10.162	396.520	5.965			11.700	+	39.418	234.734	
6	(2.538)	15.520	396.5430	7.029			13.840	+	13.244	97.281	
								--			
				21.273	21.273	20.323	20.323	--			
								--		362.948	170.546
								--			607.597
								--			2253.794
								--			76.774

不二測量株式会社

換地面積計算用紙(不正形用)

角頂	夾角	辺長	方位角	緯距		經距		複經距	倍面積		町地名番
				+	-	+	-		+	-	
10								--			
12 (2802)		50.86	2054.40	4.759		1.818		+	1.818	2.651	
20 (7307)		10.280	1056.20		4.748	12.408		+	14.044		26.176
24 (2300)		4.182	197.10		3.994	1.204		+	2.721		108.688
50 (2471)		10.583	287.20	3.923		12.987		+	12.987	51.727	
								--			
				1.742	1.742	14.226	14.226	--		60.378	104.864
								--			124.486
								--			62.743
								--			18.220
								--			
								--			
								--			
								--			
								--			
								--			
								--			
								--			
								--			
								--			

不二測量株式会社

換地面積計算用紙(不正形用)

角頂	夾角	辺長	方位角	緯距		經距		複經距	倍面積		町地名番
				+	-	+	-		+	-	
26								--			
54 (3700)		1.727	8920	1.659		0.954		+	0.954	1.352	
25 (7500)		10.636	1052510		3.626	13.115		+	15.153		54.502
4 (586)		10.575	1971050		1.100		3.132	+	25.061		253.166
0 (1502)		2.701	2562540		0.641		2.155	+	19.279		12.357
26 (6235)		11.326	125030	7.702			7.012	+	11.312	64.080	
								--			
				14.367	14.367	14.299	14.099	--			
								--		70.420	320.105
								--			248.605
								--			12124.1425
								--			
								--			37.784
								--			
								--			
								--			
								--			

不二測量株式会社

換地面積計算用紙(不正形用)

角頂	夾角	辺長	方位角	緯距		経距		複経距	倍面積		町地名番
				+	-	+	-		+	-	
30								--			
10	(114.24)	20.271	618.10	20.145		2.280		+	2.280	47.070	
11	(129.44)	5.990	918.30		0.119	5.989		+	10.541	1.255	
30	(112.55)	21.372	186.1120		21.247		2.304	+	14.234	302.429	
30	(123.18)	6.233	271.240	0.128			0.022	+	5.890	0.754	
30	(122.8)	0.597	624.00	0.593		0.067		-	0.067	0.039	
								--			
				21.366	21.366	2.336	2.336	--			
								--		47.024	303.723
								--			255.899
								--			127.849
								--			38.704
								--			
								--			
								--			
								--			
								--			

不二測量株式会社

換地面積計算用紙(不正形用)

角頂	夾角	辺長	方位角	緯距		經距		複經距	面積		町地名番
				+	-	+	-		+	-	
1											
2	117.55	21.872	61120	2.247		2.304		+	2.304	48.953	
3	124.28	4.414	91830		0.227	4.412		-	9.030		0.7024
4	117.55	21.837	844510		2.264		1.768	-	11.664		248.123
5	127.22	4.948	271840	0.104		4.948		+	4.948	0.514	
				2.351	2.351	6.716	6.716				
										48.467	248.997
											199.340
											3299.470
											30.150

不二測量株式会社

換地面積計算用紙(不正形用)

角頂	夾角	辺長	方位角	緯距		經距		複經距	倍面積		町地名番
				+	-	+	-		+	-	
								--			
37	126°31'	22,916	71°34'	22,743		2,803		+	2,803	13,748	
34	46°58'	8,480	62°30'	8,435		9,947		+	8,550	55,274	
36	33°15'	1,933	91°24'		9128	6,032		+	12,502		1,732
35	37°22'	4,949	"		4,104	4,949		+	24,512		2,549
12	117°35'	21,337	44°51'	21,264		1,768		+	31,228	664,032	
10	54°00'	9,812	91°21'		9,206	9,216		+	42,812		8,819
32	30°41'	55,304	89°22'		54,564		9,014	+	43,614		2,379,754
33	26°15'	17,481	228°26'	2,560			17,300	+	17,300	44,200	
								--			
				55,002	55,002	26,314	26,314	--		227,342	2,392,154
								--			1,565,512
								--			2,782,756
								--			
								--			236,713,25
								--			

不二測量株式会社

換地面積計算用紙(不正形用)

不二測量株式会社

角頂	夾角	辺長	方位角	緯距		經距		複經距	面積		町地名番
				+	-	+	-		+	-	
U											
61	(2.001)	16.366	84°10'	16.197		2.344		+	2.344	07.965	
33	(10.000)	18.182	84°10'	17.895		2.105		+	2.393	101.237	
39	(2.618)	17.482	98°25'0"		2.560	12.800		+	27.198		49.426
40	(6.647)	22.282	108°26'40"		3.820	11.465		+	55.963		213.946
60	(4.965)	9.022	83°34'40"		9.010		0.506	+	66.864		102.444
49	(2.738)	5.342	95°35'20"		5.145		1.436	+	84.864		383.725
48	(2.192)	5.203	253°46'50"		1.621		5.672	+	57.846		93.714
47	(1.270)	2.310	253°56'20"		0.639		2.220	+	50.064		31.990
R	(5.428)	9.991	93°36'10"		9.211		2.050	+	45.494		441.792
10	(1.225)	2.306	279°58'34"	0.578			2.386	+	39.858	23.037	
T	(1.979)	0.597	267°37'40"		0.149		2.596	+	32.976		4.913
U	(8.162)	14.841	261°49'10"		2.112		14.690	+	144.991		31.025
				34.770	34.770	33.714	33.714		192.239	1023.245	
										1631.008	
										5815.503	
										246.007	

246.007

1.1.5

換地面積計算用紙(不正形用)

角頂	夾角	辺長	方位角	緯距		經距		複經距	面積		町地名番
				+	-	+	-		+	-	
								--			
39								+			
40 (30.417)		55.304	9 22 50	54.564		9.014		+	9.014	491.039	
41 (4.000)		7.271	91 12 10		0.153	7.271		+	25.219		5.870
42 (11.346)		22.630	89 5 30		2.037		3.268	+	29.810		597.274
43 (15.666)		38.484	91 44 0		5.783	37.899		+	53.939		812.468
44 (10.246)		17.634	98 7 30		57.705		1.785	+	71.933		1346.164
45 (5.000)		9.194	324 10 0		4.518		6.342	+	63.896		416.474
46 (1.000)		18.18	304 14 40		1.658		0.746	+	56.808		94.187
47 (5.000)		9.091	"		8.289		12.732	+	52.538		433.763
48 (2.153)		13.108	279 7 00	2.100			12.834	+	35.704	75.104	
39 (6.647)		12.088	280 26 40	3.853			11.265	+	11.465	43.830	
								--			
				60.487	60.487	44.174	44.174	--		610.773	320.000
								--			253.227
								--			1096.610
								--			592.225

不二測量株式会社

街廓点坐標及街廓面積計算簿

街廓番号 (No. 1122-2)

点	方位角(A)	距離(S)	cosA	sinA	x	y	(3) 複緯距	(4) 複經距	(1) × (4)	(2) × (3)
			(1) S cosA	(2) S sinA						
A					3167.281	71002.973				
1	83° 20'	28.737	+ 28.404	+ 4.298	3128.877	70998.176	+ 28.404	+ 4.298	+ 122.0803	+ 122.0803
B	83° 30'	14.725	+ 14.635	+ 2.517	3112.342	70996.158	+ 20.343	+ 11.113	+ 183.7634	+ 184.6043
C	92° 26' 60"	40.851	- 4.050	+ 40.148	3118.342	70981.760	+ 23.878	+ 54.038	- 324.2280	+ 3389.3422
D	82° 41' 20"	16.228	+ 1.976	+ 16.402	3116.366	70944.348	+ 29.854	+ 109.848	+ 217.10596	+ 1229.9113
E	90° 13' 30"	19.153	- 0.156	+ 19.153	3116.372	70937.195	+ 81.824	+ 128.403	0.7704	+ 257.9910
F	99° 6' 40"	2.532	- 0.439	+ 2.630	3116.181	70934.665	+ 81.079	+ 134.086	+ 58.8637	+ 205.8888
G	111° 4' 11"	2.266	- 0.819	+ 2.113	3117.630	70932.652	+ 20.121	+ 138.729	+ 113.6190	+ 169.2956
H	136° 41' 10"	2.121	- 1.272	+ 1.697	3118.902	70930.855	+ 28.230	+ 142.539	- 181.3096	+ 132.4169
I	132° 44' 50"	21.636	- 21.541	+ 23.170	3110.443	70927.185	+ 66.217	+ 167.406	- 360.6026	+ 1279.3778
J	132° 44' 50"	19.250	- 7.455	+ 8.022	3117.299	70929.165	+ 26.220	+ 198.596	- 1480.7317	+ 210.2808
T	161° 3' 30"	4.234	- 4.091	+ 1.092	3151.990	70928.170	+ 14.673	+ 07.708	- 849.7334	+ 16.0229
点檢点坐標計算								Σ		
								倍面積	522.8933	
								面積		

不二測量株式会社

街廓点坐標及街廓面積計算簿

街廓番号 (No. 1182-2)

121

点	方位角(A)	距離(S)	cosA	sinA	x	y	(3) 複緯距	(4) 複經距	(1) × (4)	(2) × (3)
			(1) S cosA	(2) S sinA						
T					351.990					
K	197 12 0	1466	- 1466	- 6434	350.090	70899.007	+ 2182	+ 208.366	- 291.7124	- 3.9849
L	236 38 40	6950	- 6950	- 6908	357.210	70924.816	+ 13.959	+ 202.124	- 772.7200	- 22.9938
M	224 46 40	1895	- 1895	- 1338	370.105	70918.170	- 23.256	+ 182.958	- 2450.1725	- 177.0736
N	262 41 40	450	- 450	- 4303	371.932	70922.476	- 27.975	+ 161.297	- 219.3491	- 120.1376
F	280 19 30	4626	+ 4626	- 45467	360.648	70967.940	- 21.018	+ 15.527	+ 957.0256	+ 955.6250
A	280 18 10	3660	+ 3660	- 3603	357.281	71002.970	- 6.367	+ 35.030	+ 223.0360	+ 223.0360
点檢点坐標計算								Σ		
								倍面積	+ 1702.9549	- 26.9787
								面積	- 10349.3034	+ 8673.3269
									8646.3485	- 8646.3485
									Σ	= 4323.1741
										1307.760

不二測量株式会社

換地面積計算用紙(不正形用)

角頂	夾角	辺長	方位角	緯距		經距		複經距	倍面積		町地名番
				+	-	+	-		+	-	
A											
1	(15800)	28.737	8 31	28.144		13.98		13.98	22.280		
2	(21401)	32.811	100 43		2.233	32.233		16.829		338.657	
3	(15698)	28.642	186 11		27.607		7.621	27.621		213.952	
4	(19582)	36.604	380 18	1.367			35.239	35.239	220.236		
									34.114	2474.619	
										2129.503	
										1066.751	
										222.287	

不二測量株式会社

換地面積計算用紙(不正形用)
不二測量株式会社

角頂	夾角	辺長	方位角	緯距		経距		複経距	倍面積		町地名番
				+	-	+	-		+	-	
(7))										3
(6))	11.663	15-14-10	11.253	0	3.065	0	3.065	34.4904		
(14))	7.982	14-47-30	7.717	0	2.038	0	8.168	63.0324		
(15))	3.706	104-47-30	-0.946	0	3.583	0	13.789	-13.0443		
(13))	11.899	14-47-30	11.505	0	3.038	0	20.410	234.8170		
(D))	11.528	82-41-20	1.467	0	11.434	0	34.882	51.1718		
(E))	3.153	90-6-33	-0.006	0	3.153	0	49.469	-0.2968		
(F))	2.568	99-50-40	-0.439	0	2.530	0	55.152	-24.2117		
(G))	2.266	111-11-11	-0.819	0	2.113	0	59.795	-48.9721		
(H))	2.121	126-51-10	-1.272	0	1.697	0	63.605	-80.9055		
(I))	6.000	196-15-10	-5.760	0	-1.679	0	63.623	-366.4684		
(D))	15.379	210-21-50	-13.269	0	-7.774	0	54.170	-718.7817		
(9))	1.500	295-3-0	0.635	0	-1.359	0	45.037	28.5984		
(8))	16.990	201-32-30	-15.803	-1	-6.238	1	37.441	-591.7175		
(7))	16.624	290-1-30	5.738	0	-15.602	0	15.602	89.5242		
								BAIMENSEKI	-1342.7638		
								MENSEKI	671.38		
									3		
									671.41		

(// BL)

換地面積計算用紙

角頂	夾角	辺長	方位角	x		y		複經距	面積		町地名番
				+	-	+	-		+	-	
		(4)									
口											
I		15.079	00 21 50	13.270		7.774		+	7.774	102.160	
H		6.000	16 15 10	5.760		1.679		+	1.7227	99.227	
3		21.625	102 54 50		21.541	23.170		+	4.2076		906.359
12		12.972	222 57 00		9.494	8.840		+	5.6406		535.578
11		7.068	201 11 10	3.660				+	6.047	41.519	151.959
10		18.460	295 12 20	7.862				+	16.705	18.767	147.564
口		1.128	295 3 0	0.482				+	1.031	1.031	0.496
				31.035		22.623				502.406	1441.877
											939.471
									1/2		469.735

換地面積計算用紙(不正形用)

角頂	夾角	辺長	方位角	緯距		経距		複経距	倍面積		町地名番	
				+	-	+	-		+	-		
12								--				
G	(7135)	12.878	42	17	7.484	8.844		-	8.844	83.926		
I	(6022)	10.202	32	54	7.456	8.220		+	26.709	171.619		
J	(2329)	8.234	16	03	4.091	1.092		-	36.813	142.446		
K	(9806)	11.464	19	12	1.400	0.430		+	36.479	49.668		
L	(3824)	6.260	23	38	3.823	6.809		-	39.228	111.708		
U	(0380)	0.891	22	55	40	0.889		+	22.933	11.213		
12	(7505)	13.626	20	40	50	7.765		+	11.222	87.130		
								--				
					17.259	17.259	17.952	17.952	--	171.964	506.643	
								--		335.579		
								--		167.289		
								--		50.756		
								--				
								--				
								--				

不二測量株式会社

換地面積計算用紙(不正形用)

角頂	夾角	辺長	方位角	緯距		經距		複經距	倍面積		町地名番
				+	-	+	-		+	-	
7	(9.283)	14.878	15 16	14.784		11.436		11.436	72.244		
8	(9.143)	14.124	11 11		6.738	14.642		24.474		140.431	
9	(8.844)	14.288	21 33	14.843		4.239		16.344	231.950		
10	(14.51)	2.438	14 3		1.117	2.379		14.243		61.370	
11	(10.155)	2.469	14 12		2.869	14.704		24.637		682.162	
12	(3.887)	2.684	121 11		3.460	1.047		94.789		354.247	
4	(7.505)	13.646	124 40 50		7.785	11.222		114.258		885.660	
13	(10.023)	18.224	234 4			12.903	12.870	112.419		1450.426	
2	(24.77)	4.603	212 41		1.327		4.300	26.237		126.379	
5	(25.419)	44.214	280 19	3.291			44.147	14.157	374.648		
				40.570	40.570	10.128	63.128		1180.792	3600.665	
										2419.873	
										1207.9365	
										366.845	坪

不二測量株式会社

