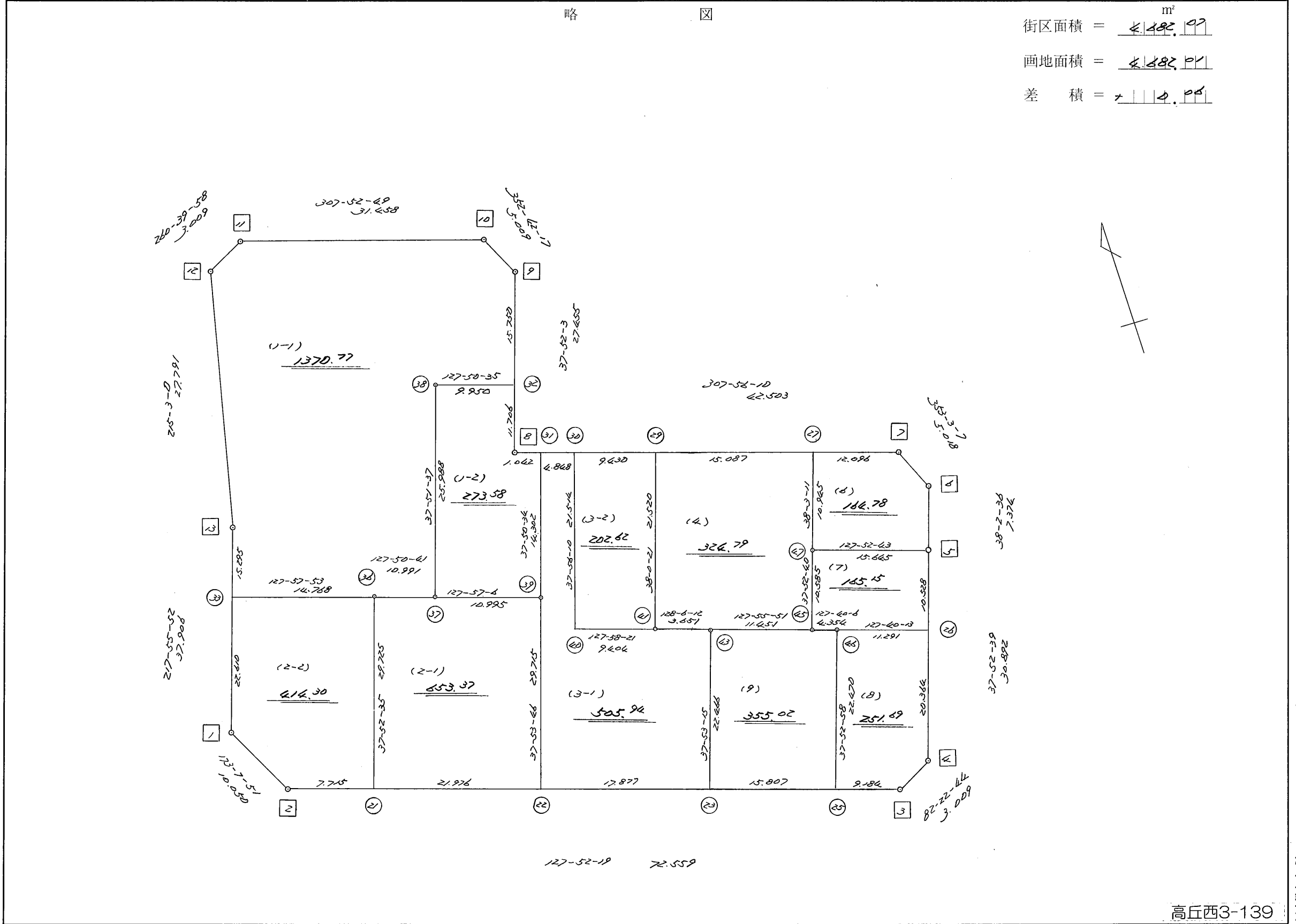


略 図

街区面積 = $\frac{m^2}{4,492.99}$
 画地面積 = $\frac{4,482.01}{}$
 差 積 = $\frac{10.98}{}$



高丘西3-139

街区点番号 1 ~ 13 筆界点番号 21 ~ 47 画地番号 (1) ~ (9)

不二総合コンサルタント株式会社

<< H. 4 高丘葵地区 >>

| * * 面積計算 (倍横距法) * | | | | | * * ワーク名: 71BL | | | | | |
|-------------------|-------|-----------|-----------|--------|----------------|---------|-------------|------------|---------|--------------|
| 器械点 | 視準点 | 夾角 | 方向角 | 距離 | 緯距 | 経距 | X座標 | Y座標 | 倍横距 | 倍面積 |
| 71-13 | 71-1 | | 217-55-52 | | | | -137470.594 | -73480.785 | | |
| 71-1 | 71-2 | 135-11-59 | 173-07-51 | 10.050 | -9.978 | 1.202 | -137480.572 | -73479.583 | 1.202 | -11.993556 |
| 71-2 | 71-3 | 134-44-28 | 127-52-19 | 72.559 | -44.544 | 57.277 | -137525.116 | -73422.306 | 59.681 | -2658.430464 |
| 71-3 | 71-4 | 134-30-25 | 82-22-44 | 3.009 | 0.399 | 2.982 | -137524.717 | -73419.324 | 119.940 | 47.856060 |
| 71-4 | 71-5 | 135-29-55 | 37-52-39 | 30.892 | 24.384 | 18.967 | -137500.333 | -73400.357 | 141.889 | 3459.821376 |
| 71-5 | 71-6 | 180-09-57 | 38-02-36 | 7.374 | 5.807 | 4.544 | -137494.526 | -73395.813 | 165.400 | 960.477800 |
| 71-6 | 71-7 | 135-00-31 | 353-03-07 | 5.018 | 4.981 | -0.607 | -137489.545 | -73396.420 | 169.337 | 843.467597 |
| 71-7 | 71-8 | 134-53-03 | 307-56-10 | 42.503 | 26.130 | -33.522 | -137463.415 | -73429.942 | 135.208 | 3532.985040 |
| 71-8 | 71-9 | 269-55-53 | 37-52-03 | 27.455 | 21.674 | 16.853 | -137441.741 | -73413.089 | 118.539 | 2569.214286 |
| 71-9 | 71-10 | 134-50-14 | 352-42-17 | 5.009 | 4.968 | -0.636 | -137436.773 | -73413.725 | 134.756 | 669.467808 |
| 71-10 | 71-11 | 135-10-32 | 307-52-49 | 31.458 | 19.316 | -24.830 | -137417.457 | -73438.555 | 109.290 | 2111.045640 |
| 71-11 | 71-12 | 132-47-09 | 260-39-58 | 3.009 | -0.488 | -2.969 | -137417.945 | -73441.524 | 81.491 | -39.767608 |
| 71-12 | 71-13 | 134-23-02 | 215-03-00 | 27.791 | -22.751 | -15.960 | -137440.696 | -73457.484 | 62.562 | -1423.348062 |
| 71-13 | 71-1 | 182-52-52 | 217-55-52 | 37.906 | -29.898 | -23.301 | -137470.594 | -73480.785 | 23.301 | -696.653298 |
| | | | | | | | | | 倍面積 | 9364.142619 |
| | | | | | | | | | 面積 | 4682.0713095 |

<< H. 4 高丘葵地区 >>

| * * 面積計算 (倍横距法) * | | | | | ワーク名: 71BL-1-1 | | | | | |
|-------------------|-------|-----------|-----------|--------|----------------|---------|-------------|------------|---------|-------------|
| 器械点 | 視準点 | 夾角 | 方向角 | 距離 | 緯距 | 経距 | X座標 | Y座標 | 倍横距 | 倍面積 |
| 71-13 | 71-33 | | 217-55-52 | | | | -137452.760 | -73466.886 | | |
| 71-33 | 71-36 | 90-02-01 | 127-57-53 | 14.768 | -9.085 | 11.643 | -137461.845 | -73455.243 | 11.643 | -105.776655 |
| 71-36 | 71-37 | 179-52-48 | 127-50-41 | 10.991 | -6.743 | 8.679 | -137468.588 | -73446.564 | 31.965 | -215.539995 |
| 71-37 | 71-38 | 90-00-56 | 37-51-37 | 25.988 | 20.518 | 15.950 | -137448.070 | -73430.614 | 56.594 | 1161.195692 |
| 71-38 | 71-32 | 269-58-58 | 127-50-35 | 9.950 | -6.104 | 7.857 | -137454.174 | -73422.757 | 80.401 | -490.767704 |
| 71-32 | 71-9 | 90-01-28 | 37-52-03 | 15.750 | 12.433 | 9.668 | -137441.741 | -73413.089 | 97.926 | 1217.513958 |
| 71-9 | 71-10 | 134-50-14 | 352-42-17 | 5.009 | 4.968 | -0.636 | -137436.773 | -73413.725 | 106.958 | 531.367344 |
| 71-10 | 71-11 | 135-10-32 | 307-52-49 | 31.458 | 19.316 | -24.830 | -137417.457 | -73438.555 | 81.492 | 1574.099472 |
| 71-11 | 71-12 | 132-47-09 | 260-39-58 | 3.009 | -0.488 | -2.969 | -137417.945 | -73441.524 | 53.693 | -26.202184 |
| 71-12 | 71-13 | 134-23-02 | 215-03-00 | 27.791 | -22.751 | -15.960 | -137440.696 | -73457.484 | 34.764 | -790.915764 |
| 71-13 | 71-33 | 182-52-52 | 217-55-52 | 15.295 | -12.064 | -9.402 | -137452.760 | -73466.886 | 9.402 | -113.425728 |
| | | | | | | | | | 倍面積 | 2741.548436 |
| | | | | | | | | | 面積 | 1370.774218 |

<< H. 4 高丘葵地区 >>

| * * 面積計算 (倍横距法) * | | | | | * * ワーク名: 71BL-1-2 | | | | | |
|-------------------|-------|-----------|-----------|--------|--------------------|---------|-------------|------------|--------|-------------|
| 器械点 | 視準点 | 夾角 | 方向角 | 距離 | 緯距 | 経距 | X座標 | Y座標 | 倍横距 | 倍面積 |
| 71-38 | 71-37 | | 217-51-37 | | | | -137468.588 | -73446.564 | | |
| 71-37 | 71-39 | 90-05-29 | 127-57-06 | 10.995 | -6.762 | 8.670 | -137475.350 | -73437.894 | 8.670 | -58.626540 |
| 71-39 | 71-31 | 89-53-28 | 37-50-34 | 14.302 | 11.294 | 8.774 | -137464.056 | -73429.120 | 26.114 | 294.931516 |
| 71-31 | 71-8 | 90-05-36 | 307-56-10 | 1.042 | 0.641 | -0.822 | -137463.415 | -73429.942 | 34.066 | 21.836306 |
| 71-8 | 71-32 | 269-55-53 | 37-52-03 | 11.706 | 9.241 | 7.185 | -137454.174 | -73422.757 | 40.429 | 373.604389 |
| 71-32 | 71-38 | 89-58-32 | 307-50-35 | 9.950 | 6.104 | -7.857 | -137448.070 | -73430.614 | 39.757 | 242.676728 |
| 71-38 | 71-37 | 90-01-02 | 217-51-37 | 25.988 | -20.518 | -15.950 | -137468.588 | -73446.564 | 15.950 | -327.262100 |
| | | | | | | | | | 倍面積 | 547.160299 |
| | | | | | | | | | 面積 | 273.5801495 |

<< H. 4 高丘葵地区 >>

| * * 面積計算 (倍横距法) * | | | | | * * ワーク名: 71BL-2-1 | | | | | |
|-------------------|-------|-----------|-----------|--------|--------------------|---------|-------------|------------|--------|-------------|
| 器械点 | 視準点 | 夾角 | 方向角 | 距離 | 緯距 | 経距 | X座標 | Y座標 | 倍横距 | 倍面積 |
| 71-36 | 71-21 | | 217-52-35 | | | | -137485.308 | -73473.493 | | |
| 71-21 | 71-22 | 89-59-44 | 127-52-19 | 21.976 | -13.491 | 17.347 | -137498.799 | -73456.146 | 17.347 | -234.028377 |
| 71-22 | 71-39 | 90-01-27 | 37-53-46 | 29.715 | 23.449 | 18.252 | -137475.350 | -73437.894 | 52.946 | 1241.530754 |
| 71-39 | 71-37 | 90-03-20 | 307-57-06 | 10.995 | 6.762 | -8.670 | -137468.588 | -73446.564 | 62.528 | 422.814336 |
| 71-37 | 71-36 | 179-53-35 | 307-50-41 | 10.991 | 6.743 | -8.679 | -137461.845 | -73455.243 | 45.179 | 304.641997 |
| 71-36 | 71-21 | 90-01-54 | 217-52-35 | 29.725 | -23.463 | -18.250 | -137485.308 | -73473.493 | 18.250 | -428.199750 |
| | | | | | | | | | 倍面積 | 1306.758960 |
| | | | | | | | | | 面積 | 653.379480 |

<< H. 4 高丘葵地区 >>

| * * 面積計算 (倍横距法) * | | | | | * * ワーク名: 71BL-2-2 | | | | | |
|-------------------|-------|-----------|-----------|--------|--------------------|---------|-------------|------------|--------|-------------|
| 器械点 | 視準点 | 夾角 | 方向角 | 距離 | 緯距 | 経距 | X座標 | Y座標 | 倍横距 | 倍面積 |
| 71-33 | 71-1 | | 217-55-52 | | | | -137470.594 | -73480.785 | | |
| 71-1 | 71-2 | 135-11-59 | 173-07-51 | 10.050 | -9.978 | 1.202 | -137480.572 | -73479.583 | 1.202 | -11.993556 |
| 71-2 | 71-21 | 134-44-28 | 127-52-19 | 7.715 | -4.736 | 6.090 | -137485.308 | -73473.493 | 8.494 | -40.227584 |
| 71-21 | 71-36 | 90-00-16 | 37-52-35 | 29.725 | 23.463 | 18.250 | -137461.845 | -73455.243 | 32.834 | 770.384142 |
| 71-36 | 71-33 | 90-05-18 | 307-57-53 | 14.768 | 9.085 | -11.643 | -137452.760 | -73466.886 | 39.441 | 358.321485 |
| 71-33 | 71-1 | 89-57-59 | 217-55-52 | 22.610 | -17.834 | -13.899 | -137470.594 | -73480.785 | 13.899 | -247.874766 |
| | | | | | | | | | 倍面積 | 828.609721 |
| | | | | | | | | | 面積 | 414.3048605 |

<< H. 4 高丘葵地区 >>

| * * 面積計算 (倍横距法) * | | | | | * * ワーク名: 71BL-3-1 | | | | | |
|-------------------|-------|-----------|-----------|--------|--------------------|---------|-------------|------------|--------|-------------|
| 器械点 | 視準点 | 夾角 | 方向角 | 距離 | 緯距 | 経距 | X座標 | Y座標 | 倍横距 | 倍面積 |
| 71-39 | 71-22 | | 217-53-46 | | | | -137498.799 | -73456.146 | | |
| 71-22 | 71-23 | 89-58-33 | 127-52-19 | 17.877 | -10.975 | 14.112 | -137509.774 | -73442.034 | 14.112 | -154.879200 |
| 71-23 | 71-43 | 90-00-56 | 37-53-15 | 22.466 | 17.731 | 13.797 | -137492.043 | -73428.237 | 42.021 | 745.074351 |
| 71-43 | 71-41 | 90-12-57 | 308-06-12 | 3.651 | 2.253 | -2.873 | -137489.790 | -73431.110 | 52.945 | 119.285085 |
| 71-41 | 71-40 | 179-52-09 | 307-58-21 | 9.404 | 5.786 | -7.413 | -137484.004 | -73438.523 | 42.659 | 246.824974 |
| 71-40 | 71-30 | 269-57-49 | 37-56-10 | 21.514 | 16.968 | 13.226 | -137467.036 | -73425.297 | 48.472 | 822.472896 |
| 71-30 | 71-31 | 90-00-00 | 307-56-10 | 4.848 | 2.980 | -3.823 | -137464.056 | -73429.120 | 57.875 | 172.467500 |
| 71-31 | 71-39 | 89-54-24 | 217-50-34 | 14.302 | -11.294 | -8.774 | -137475.350 | -73437.894 | 45.278 | -511.369732 |
| 71-39 | 71-22 | 180-03-12 | 217-53-46 | 29.715 | -23.449 | -18.252 | -137498.799 | -73456.146 | 18.252 | -427.991148 |
| | | | | | | | | | 倍面積 | 1011.884726 |
| | | | | | | | | | 面積 | 505.942363 |

<< H. 4 高丘葵地区 >>

| * * 面積計算 (倍横距法) * | | | | | * * ワーク名: 71BL-3-2 | | | | | |
|-------------------|-------|----------|-----------|--------|--------------------|---------|-------------|------------|--------|-------------|
| 器械点 | 視準点 | 夾角 | 方向角 | 距離 | 緯距 | 経距 | X座標 | Y座標 | 倍横距 | 倍面積 |
| 71-30 | 71-40 | | 217-56-10 | | | | -137484.004 | -73438.523 | | |
| 71-40 | 71-41 | 90-02-11 | 127-58-21 | 9.404 | -5.786 | 7.413 | -137489.790 | -73431.110 | 7.413 | -42.891618 |
| 71-41 | 71-29 | 90-02-00 | 38-00-21 | 21.520 | 16.957 | 13.251 | -137472.833 | -73417.859 | 28.077 | 476.101689 |
| 71-29 | 71-30 | 89-55-49 | 307-56-10 | 9.430 | 5.797 | -7.438 | -137467.036 | -73425.297 | 33.890 | 196.460330 |
| 71-30 | 71-40 | 90-00-00 | 217-56-10 | 21.514 | -16.968 | -13.226 | -137484.004 | -73438.523 | 13.226 | -224.418768 |
| | | | | | | | | | 倍面積 | 405.251633 |
| | | | | | | | | | 面積 | 202.6258165 |

<< H. 4 高丘葵地区 >>

| * * 面積計算 (倍横距法) * | | | | | * * ワーク名: 71BL-4 | | | | | |
|-------------------|-------|-----------|-----------|--------|------------------|---------|-------------|------------|--------|-------------|
| 器械点 | 視準点 | 夾角 | 方向角 | 距離 | 緯距 | 経距 | X座標 | Y座標 | 倍横距 | 倍面積 |
| 71-29 | 71-41 | | 218-00-21 | | | | -137489.790 | -73431.110 | | |
| 71-41 | 71-43 | 90-05-51 | 128-06-12 | 3.651 | -2.253 | 2.873 | -137492.043 | -73428.237 | 2.873 | -6.472869 |
| 71-43 | 71-45 | 179-49-39 | 127-55-51 | 11.451 | -7.039 | 9.032 | -137499.082 | -73419.205 | 14.778 | -104.022342 |
| 71-45 | 71-47 | 89-56-49 | 37-52-40 | 10.585 | 8.355 | 6.499 | -137490.727 | -73412.706 | 30.309 | 253.231695 |
| 71-47 | 71-27 | 180-10-31 | 38-03-11 | 10.945 | 8.618 | 6.746 | -137482.109 | -73405.960 | 43.554 | 375.348372 |
| 71-27 | 71-29 | 89-52-59 | 307-56-10 | 15.087 | 9.276 | -11.899 | -137472.833 | -73417.859 | 38.401 | 356.207676 |
| 71-29 | 71-41 | 90-04-11 | 218-00-21 | 21.520 | -16.957 | -13.251 | -137489.790 | -73431.110 | 13.251 | -224.697207 |
| | | | | | | | | | 倍面積 | 649.595325 |
| | | | | | | | | | 面積 | 324.7976625 |

<< H. 4 高丘葵地区 >>

| * * 面積計算 (倍横距法) * | | | | | * * ワーク名: 71BL-6 | | | | | |
|-------------------|-------|-----------|-----------|--------|------------------|--------|-------------|------------|--------|-------------|
| 器械点 | 視準点 | 夾角 | 方向角 | 距離 | 緯距 | 経距 | X座標 | Y座標 | 倍横距 | 倍面積 |
| 71-27 | 71-47 | | 218-03-11 | | | | -137490.727 | -73412.706 | | |
| 71-47 | 71-5 | 89-49-32 | 127-52-43 | 15.645 | -9.606 | 12.349 | -137500.333 | -73400.357 | 12.349 | -118.624494 |
| 71-5 | 71-6 | 90-09-53 | 38-02-36 | 7.374 | 5.807 | 4.544 | -137494.526 | -73395.813 | 29.242 | 169.808294 |
| 71-6 | 71-7 | 135-00-31 | 353-03-07 | 5.018 | 4.981 | -0.607 | -137489.545 | -73396.420 | 33.179 | 165.264599 |
| 71-7 | 71-27 | 134-53-03 | 307-56-10 | 12.096 | 7.436 | -9.540 | -137482.109 | -73405.960 | 23.032 | 171.265952 |
| 71-27 | 71-47 | 90-07-01 | 218-03-11 | 10.945 | -8.618 | -6.746 | -137490.727 | -73412.706 | 6.746 | -58.137028 |
| | | | | | | | | | 倍面積 | 329.577323 |
| | | | | | | | | | 面積 | 164.7886615 |

<< H. 4 高丘葵地区 >>

| * * 面積計算 (倍横距法) * | | | | | * * ワーク名: 71BL-7 | | | | | |
|-------------------|-------|-----------|-----------|--------|------------------|---------|-------------|------------|--------|-------------|
| 器械点 | 視準点 | 夾角 | 方向角 | 距離 | 緯距 | 経距 | X座標 | Y座標 | 倍横距 | 倍面積 |
| 71-47 | 71-45 | | 217-52-40 | | | | -137499.082 | -73419.205 | | |
| 71-45 | 71-46 | 89-47-26 | 127-40-06 | 4.354 | -2.661 | 3.447 | -137501.743 | -73415.758 | 3.447 | -9.172467 |
| 71-46 | 71-26 | 180-00-07 | 127-40-13 | 11.291 | -6.900 | 8.937 | -137508.643 | -73406.821 | 15.831 | -109.233900 |
| 71-26 | 71-5 | 90-12-26 | 37-52-39 | 10.528 | 8.310 | 6.464 | -137500.333 | -73400.357 | 31.232 | 259.537920 |
| 71-5 | 71-47 | 90-00-04 | 307-52-43 | 15.645 | 9.606 | -12.349 | -137490.727 | -73412.706 | 25.347 | 243.483282 |
| 71-47 | 71-45 | 89-59-57 | 217-52-40 | 10.585 | -8.355 | -6.499 | -137499.082 | -73419.205 | 6.499 | -54.299145 |
| | | | | | | | | | 倍面積 | 330.315690 |
| | | | | | | | | | 面積 | 165.157845 |

<< H. 4 高丘葵地区 >>

| * * 面積計算 (倍横距法) * | | | | | * * ワーク名: 71BL-8 | | | | | |
|-------------------|-------|-----------|-----------|--------|------------------|---------|-------------|------------|--------|-------------|
| 器械点 | 視準点 | 夾角 | 方向角 | 距離 | 緯距 | 経距 | X座標 | Y座標 | 倍横距 | 倍面積 |
| 71-46 | 71-25 | | 217-52-58 | | | | -137519.478 | -73429.556 | | |
| 71-25 | 71-3 | 89-59-21 | 127-52-19 | 9.184 | -5.638 | 7.250 | -137525.116 | -73422.306 | 7.250 | -40.875500 |
| 71-3 | 71-4 | 134-30-25 | 82-22-44 | 3.009 | 0.399 | 2.982 | -137524.717 | -73419.324 | 17.482 | 6.975318 |
| 71-4 | 71-26 | 135-29-55 | 37-52-39 | 20.364 | 16.074 | 12.503 | -137508.643 | -73406.821 | 32.967 | 529.911558 |
| 71-26 | 71-46 | 89-47-34 | 307-40-13 | 11.291 | 6.900 | -8.937 | -137501.743 | -73415.758 | 36.533 | 252.077700 |
| 71-46 | 71-25 | 90-12-45 | 217-52-58 | 22.470 | -17.735 | -13.798 | -137519.478 | -73429.556 | 13.798 | -244.707530 |
| | | | | | | | | | 倍面積 | 503.381546 |
| | | | | | | | | | 面積 | 251.690773 |

<< H. 4 高丘葵地区 >>

| * * 面積計算 (倍横距法) * | | | | | * * ワーク名: 71BL-9 | | | | | |
|-------------------|-------|-----------|-----------|--------|------------------|---------|-------------|------------|--------|-------------|
| 器械点 | 視準点 | 夾角 | 方向角 | 距離 | 緯距 | 経距 | X座標 | Y座標 | 倍横距 | 倍面積 |
| 71-43 | 71-23 | | 217-53-15 | | | | -137509.774 | -73442.034 | | |
| 71-23 | 71-25 | 89-59-04 | 127-52-19 | 15.807 | -9.704 | 12.478 | -137519.478 | -73429.556 | 12.478 | -121.086512 |
| 71-25 | 71-46 | 90-00-39 | 37-52-58 | 22.470 | 17.735 | 13.798 | -137501.743 | -73415.758 | 38.754 | 687.302190 |
| 71-46 | 71-45 | 89-47-08 | 307-40-06 | 4.354 | 2.661 | -3.447 | -137499.082 | -73419.205 | 49.105 | 130.668405 |
| 71-45 | 71-43 | 180-15-45 | 307-55-51 | 11.451 | 7.039 | -9.032 | -137492.043 | -73428.237 | 36.626 | 257.810414 |
| 71-43 | 71-23 | 89-57-24 | 217-53-15 | 22.466 | -17.731 | -13.797 | -137509.774 | -73442.034 | 13.797 | -244.634607 |
| | | | | | | | | | 倍面積 | 710.059890 |
| | | | | | | | | | 面積 | 355.029945 |