

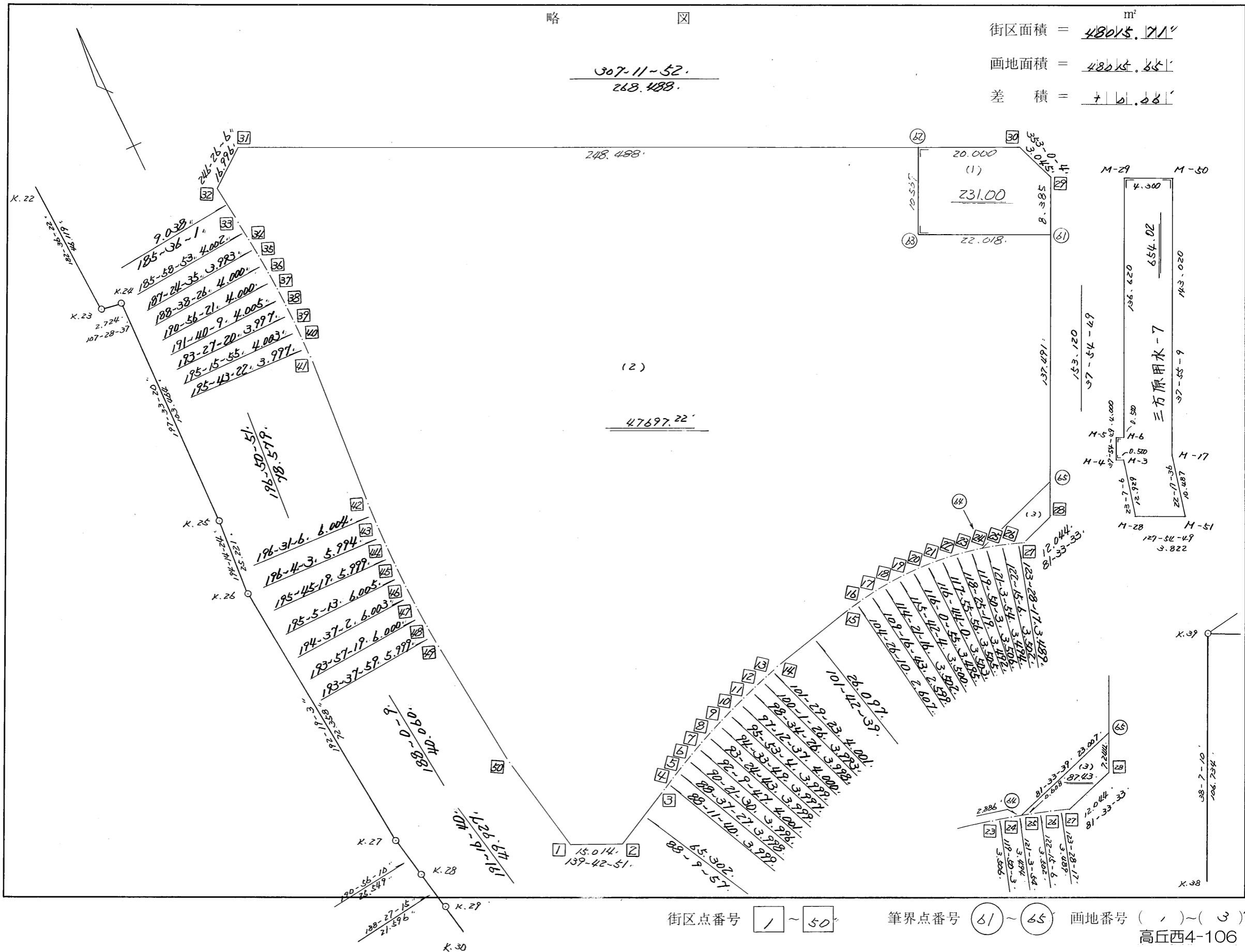
街廓原子一覽表用紙

(11-3' BL)

略 図

307-11-52.
248.488.

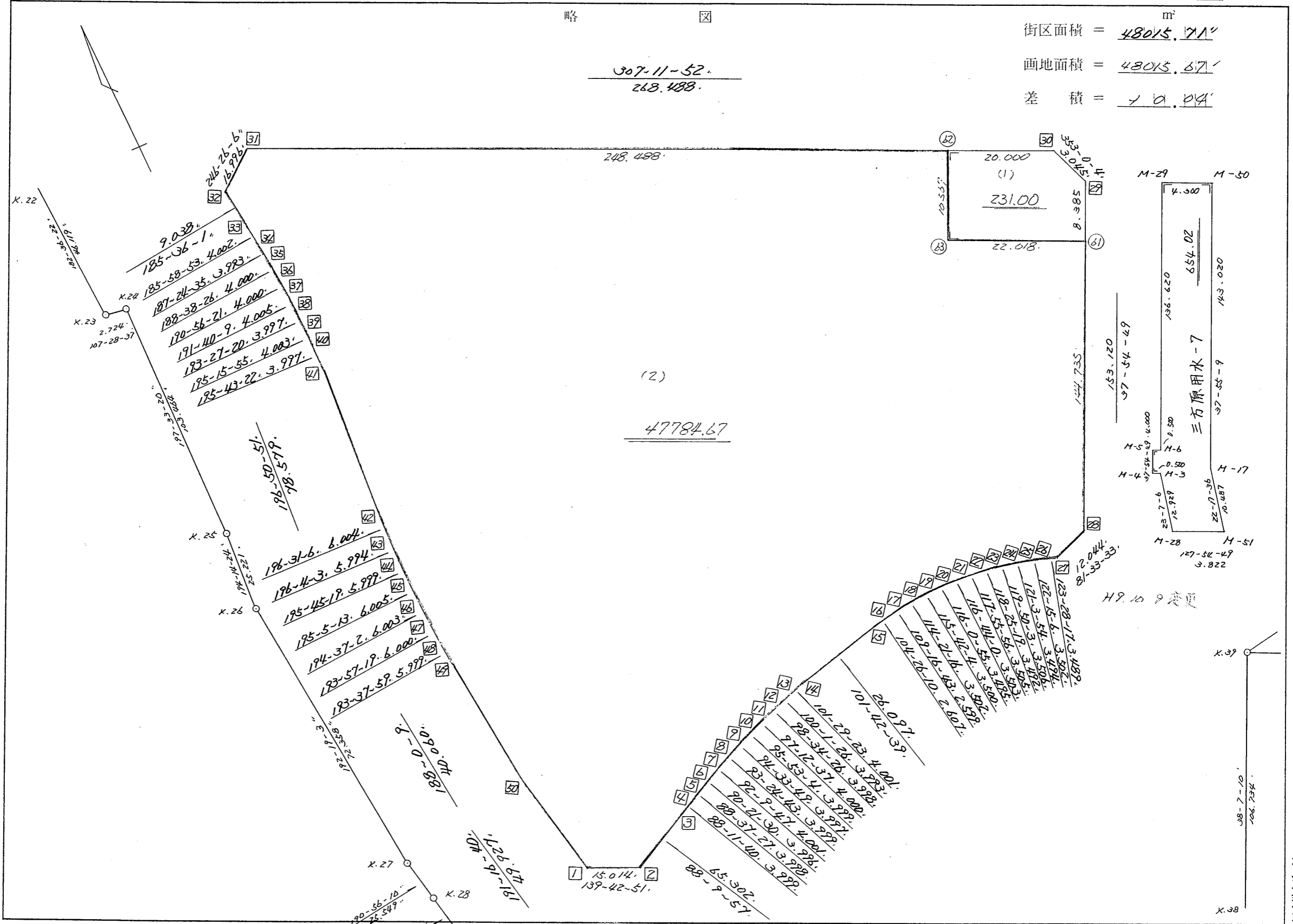
街区面積 = $\frac{48015.711}{m^2}$
画地面積 = $\frac{48015.85}{m^2}$
差 積 = $\frac{70.28}{m^2}$



街区点番号 1 ~ 50 筆界点番号 61 ~ 65 画地番号 (1) ~ (3)
高丘西4-106

不二総合コンサルタント株式会社

略 図



街区面積 = 48015.71 m²
 画地面積 = 48015.67
 差積 = 0.04

307-11-52.
 268.488.

248.488.

(2)

47784.67

20.000
 (1)
231.00
 22.018.

M-29 M-50
 4.300
 654.02
 143.020
 136.620
 143.020
 10.487
 10.487
 127-54-49
 3.822
 H-5
 H-6
 H-3
 H-4
 H-17
 H-28
 H-51

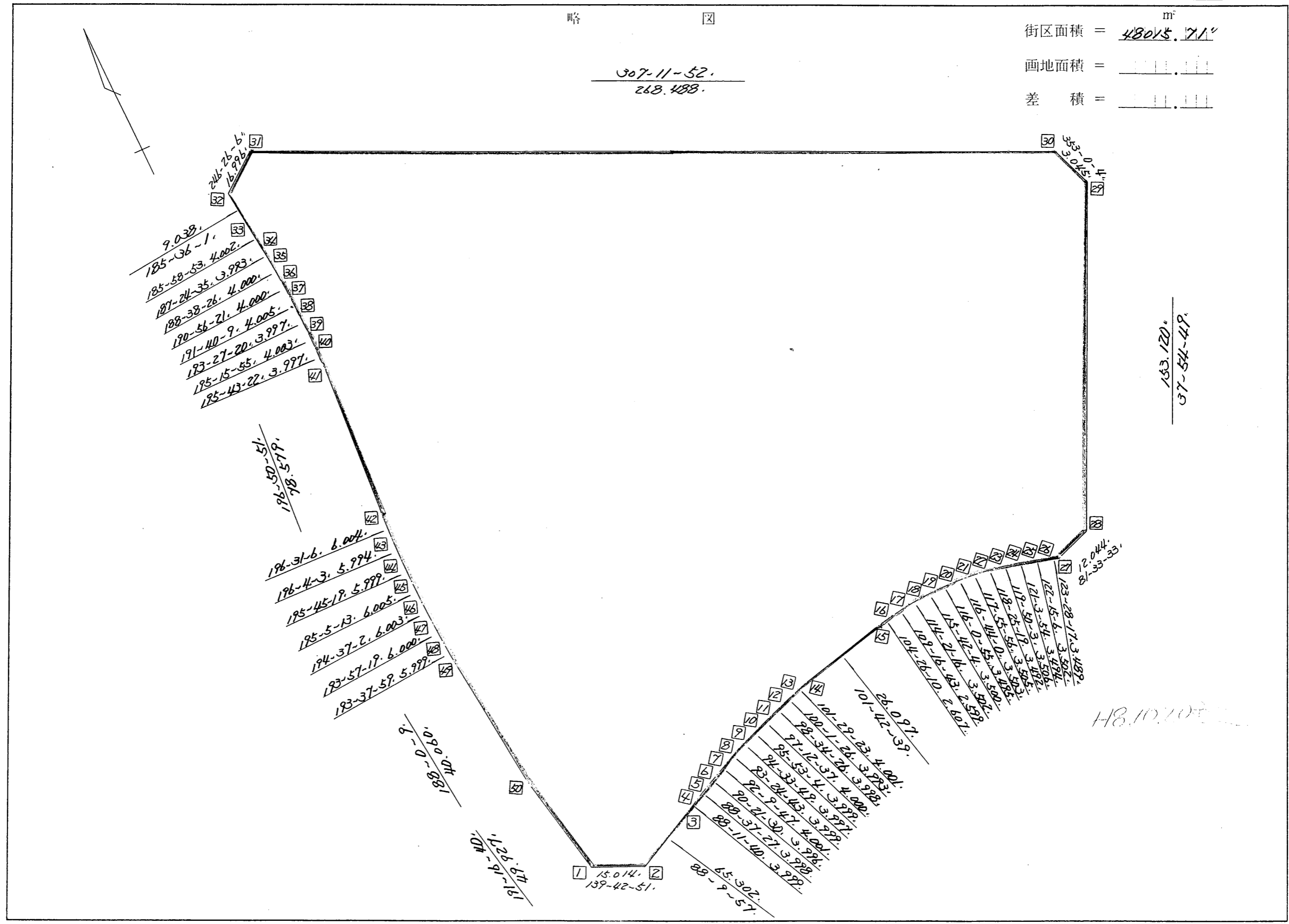
H9.10 9 階建

街区点番号 1 ~ 50 筆界点番号 61 ~ 63 画地番号 1 ~

略 図

街区面積 = 48015.711 m²
 画地面積 =
 差 積 =

$\frac{307-11-52.}{268.488.}$



$\frac{133.120.}{57-54-49.}$

H8.10.20

街区点番号 1 ~ 50 筆界点番号 1 ~ 50 画地番号 1 ~ 50

<< 高丘葵出来形確認測量 >>

※ ※ 面積計算 (倍横距法) ※ ※

地 器械点	番 : 11-3BL 視準点	内角	方向角	距離	緯距	経距	X座標	Y座標	倍横距	倍面積
11-3-1	11-3-2	128-26-11	139-42-51	15.014	-11.453	9.708	-137719.595	-73908.479	9.708	-111.185724
11-3-2	11-3-3	128-27-06	88-09-57	65.302	2.090	65.269	-137717.505	-73843.210	84.685	176.991650
11-3-3	11-3-4	180-01-43	88-11-40	3.999	0.126	3.997	-137717.379	-73839.213	153.951	19.397826
11-3-4	11-3-5	180-25-47	88-37-27	3.998	0.096	3.997	-137717.283	-73835.216	161.945	15.546720
11-3-5	11-3-6	181-44-03	90-21-30	3.996	-0.025	3.996	-137717.308	-73831.220	169.938	-4.248450
11-3-6	11-3-7	181-48-17	92-09-47	4.001	-0.151	3.998	-137717.459	-73827.222	177.932	-26.867732
11-3-7	11-3-8	181-14-56	93-24-43	3.999	-0.238	3.992	-137717.697	-73823.230	185.922	-44.249436
11-3-8	11-3-9	181-09-06	94-33-49	3.997	-0.318	3.984	-137718.015	-73819.246	193.898	-61.659564
11-3-9	11-3-10	181-19-15	95-53-04	3.999	-0.410	3.978	-137718.425	-73815.268	201.860	-82.762600
11-3-10	11-3-11	181-19-33	97-12-37	4.000	-0.502	3.968	-137718.927	-73811.300	209.806	-105.322612
11-3-11	11-3-12	181-21-49	98-34-26	3.998	-0.596	3.953	-137719.523	-73807.347	217.727	-129.765292
11-3-12	11-3-13	181-27-00	100-01-26	3.993	-0.695	3.932	-137720.218	-73803.415	225.612	-156.800340
11-3-13	11-3-14	181-27-57	101-29-23	4.001	-0.797	3.921	-137721.015	-73799.494	233.465	-186.071605
11-3-14	11-3-15	180-13-16	101-42-39	26.097	-5.297	25.554	-137726.312	-73773.940	262.940	-1392.793180
11-3-15	11-3-16	182-43-31	104-26-10	2.607	-0.650	2.525	-137726.962	-73771.415	291.019	-189.162350
11-3-16	11-3-17	184-50-33	109-16-43	2.599	-0.858	2.453	-137727.820	-73768.962	295.997	-253.965426
11-3-17	11-3-18	185-04-33	114-21-16	3.502	-1.444	3.190	-137729.264	-73765.772	301.640	-435.568160
11-3-18	11-3-19	181-20-48	115-42-04	3.500	-1.518	3.154	-137730.782	-73762.618	307.984	-467.519712
11-3-19	11-3-20	180-18-51	116-00-55	3.495	-1.533	3.141	-137732.315	-73759.477	314.279	-481.789707
11-3-20	11-3-21	180-43-05	116-44-00	3.503	-1.576	3.129	-137733.891	-73756.348	320.549	-505.185224
11-3-21	11-3-22	181-11-56	117-55-56	3.505	-1.642	3.097	-137735.533	-73753.251	326.775	-536.564550
11-3-22	11-3-23	180-29-23	118-25-19	3.492	-1.662	3.071	-137737.195	-73750.180	332.943	-553.351266
11-3-23	11-3-24	181-24-44	119-50-03	3.506	-1.744	3.041	-137738.939	-73747.139	339.055	-591.311920
11-3-24	11-3-25	181-13-51	121-03-54	3.494	-1.803	2.993	-137740.742	-73744.146	345.089	-622.195467
11-3-25	11-3-26	181-11-12	122-15-06	3.502	-1.869	2.962	-137742.611	-73741.184	351.044	-656.101236

<< 高丘葵出来形確認測量 >>

器械点	視準点	内角	方向角	距離	緯距	経距	X座標	Y座標	倍横距	倍面積
11-3-26	11-3-27✓	181-13-11	123-28-17✓	3.489✓	-1.924	2.910	-137744.535	-73738.274	356.916	-686.706384
11-3-27	11-3-28✓	138-05-16	81-33-33✓	12.044✓	1.768	11.914	-137742.767	-73726.360	371.740	657.236320
11-3-28	11-3-29✓	136-21-16	37-54-49✓	153.120✓	120.802	94.088	-137621.965	-73632.272	477.742	57712.189084
11-3-29	11-3-30✓	135-05-15	353-00-04✓	3.045✓	3.022	-0.371	-137618.943	-73632.643	571.459	1726.949098
11-3-30	11-3-31✓	134-11-48	307-11-52✓	268.488✓	162.320	-213.865	-137456.623	-73846.508	357.223	57984.437360
11-3-31	11-3-32✓	119-14-14	246-26-06✓	16.996✓	-6.795	-15.579	-137463.418	-73862.087	127.779	-868.258305
11-3-32	11-3-33✓	119-09-55	185-36-01✓	9.038✓	-8.995	-0.882	-137472.413	-73862.969	111.318	-1001.305410
11-3-33	11-3-34✓	180-22-52	185-58-53✓	4.002✓	-3.980	-0.417	-137476.393	-73863.386	110.019	-437.875620
11-3-34	11-3-35✓	181-25-42	187-24-35✓	3.993✓	-3.960	-0.515	-137480.353	-73863.901	109.087	-431.984520
11-3-35	11-3-36✓	181-13-51	188-38-26✓	4.000✓	-3.955	-0.601	-137484.308	-73864.502	107.971	-427.025305
11-3-36	11-3-37✓	182-17-55	190-56-21✓	4.000✓	-3.927	-0.759	-137488.235	-73865.261	106.611	-418.661397
11-3-37	11-3-38✓	180-43-48	191-40-09✓	4.005✓	-3.922	-0.810	-137492.157	-73866.071	105.042	-411.974724
11-3-38	11-3-39✓	181-47-11	193-27-20✓	3.997✓	-3.887	-0.930	-137496.044	-73867.001	103.302	-401.534874
11-3-39	11-3-40✓	181-48-35	195-15-55✓	4.003✓	-3.862	-1.054	-137499.906	-73868.055	101.318	-391.290116
11-3-40	11-3-41✓	180-27-27	195-43-22✓	3.997✓	-3.847	-1.083	-137503.753	-73869.138	99.181	-381.549307
11-3-41	11-3-42✓	181-07-29	196-50-51✓	78.579✓	-75.206	-22.774	-137578.959	-73891.912	75.324	-5664.816744
11-3-42	11-3-43✓	179-40-15	196-31-06✓	6.004✓	-5.756	-1.707	-137584.715	-73893.619	50.843	-292.652308
11-3-43	11-3-44✓	179-32-57	196-04-03✓	5.994✓	-5.760	-1.659	-137590.475	-73895.278	47.477	-273.467520
11-3-44	11-3-45✓	179-41-16	195-45-19✓	5.999✓	-5.774	-1.629	-137596.249	-73896.907	44.189	-255.147286
11-3-45	11-3-46✓	179-19-54	195-05-13✓	6.005✓	-5.798	-1.563	-137602.047	-73898.470	40.997	-237.700606
11-3-46	11-3-47✓	179-31-49	194-37-02✓	6.003✓	-5.809	-1.515	-137607.856	-73899.985	37.919	-220.271471
11-3-47	11-3-48✓	179-20-17	193-57-19✓	6.000✓	-5.823	-1.447	-137613.679	-73901.432	34.957	-203.554611
11-3-48	11-3-49✓	179-40-40	193-37-59✓	5.999✓	-5.830	-1.414	-137619.509	-73902.846	32.096	-187.119680
11-3-49	11-3-50✓	174-22-10	188-00-09✓	40.060✓	-39.670	-5.577	-137659.179	-73908.423	25.105	-995.915350
11-3-50	11-3-1✓	183-16-31	191-16-40✓	49.927✓	-48.963	-9.764	-137708.142	-73918.187	9.764	-478.074732

<< 高丘葵出来形確認測量 >>

倍面積	96031.420235
面積	48015.71 ✓

座標面積計算書 (倍横距法)

173 [街区名 : 11-3]
 [地番 : 11-3(1)]

点名	点名	内角	方向角	辺長	dx	*	dy	*	X	Y	DMD	2A
11-3-61	11-3-29		37-54-49						-137621.965	-73632.272		
11-3-29	11-3-30	135-05-15	353-00-04	3.045	3.022	0	-0.371	0	-137618.943	-73632.643	-0.371	-1.121162
11-3-30	11-3-62	134-11-48	307-11-52	20.000	12.091	0	-15.931	0	-137606.852	-73648.574	-16.673	-201.593243
11-3-62	11-3-63	90-00-00	217-11-52	10.567	-8.417	0	-6.388	0	-137615.269	-73654.962	-38.992	328.195664
11-3-63	11-3-61	90-00-00	127-11-52	22.018	-13.311	0	17.539	-1	-137628.580	-73637.424	-27.842	370.604862
11-3-61	11-3-29	90-42-57	37-54-49	8.385	6.615	0	5.152	0	-137621.965	-73632.272	-5.152	-34.080480
合計	測角数 = 5	540-00-00		64.015	0.000	0	0.001	-1			倍面積	462.005641
											面積	231.0028205
											地積	231.00

座標面積計算書 (倍横距法)

8 [街区名 : 11-3]
 [地番 : 11-3(2)]

点名	点名	内角	方向角	辺長	d x	*	d y	*	X	Y	DMD	2 A
11-3-50	11-3-1		191-16-40						-137708.142	-73918.187		
11-3-1	11-3-2	128-26-11	139-42-51	15.014	-11.453	0	9.708	0	-137719.595	-73908.479	9.708	-111.185724
11-3-2	11-3-3	128-27-06	88-09-57	65.302	2.090	0	65.269	0	-137717.505	-73843.210	84.685	176.991650
11-3-3	11-3-4	180-01-43	88-11-40	3.999	0.126	0	3.997	0	-137717.379	-73839.213	153.951	19.397826
11-3-4	11-3-5	180-25-47	88-37-27	3.998	0.096	0	3.997	0	-137717.283	-73835.216	161.945	15.546720
11-3-5	11-3-6	181-44-03	90-21-30	3.996	-0.025	0	3.996	0	-137717.308	-73831.220	169.938	-4.248450
11-3-6	11-3-7	181-48-17	92-09-47	4.001	-0.151	0	3.998	0	-137717.459	-73827.222	177.932	-26.867732
11-3-7	11-3-8	181-14-56	93-24-43	3.999	-0.238	0	3.992	0	-137717.697	-73823.230	185.922	-44.249436
11-3-8	11-3-9	181-09-06	94-33-49	3.997	-0.318	0	3.984	0	-137718.015	-73819.246	193.898	-61.659564
11-3-9	11-3-10	181-19-15	95-53-04	3.999	-0.410	0	3.978	0	-137718.425	-73815.268	201.860	-82.762600
11-3-10	11-3-11	181-19-33	97-12-37	4.000	-0.502	0	3.968	0	-137718.927	-73811.300	209.806	-105.322612
11-3-11	11-3-12	181-21-49	98-34-26	3.998	-0.596	0	3.953	0	-137719.523	-73807.347	217.727	-129.765292
11-3-12	11-3-13	181-27-00	100-01-26	3.993	-0.695	0	3.932	0	-137720.218	-73803.415	225.612	-156.800340
11-3-13	11-3-14	181-27-57	101-29-23	4.001	-0.797	0	3.921	0	-137721.015	-73799.494	233.465	-186.071605
11-3-14	11-3-15	180-13-16	101-42-39	26.097	-5.297	0	25.554	0	-137726.312	-73773.940	262.940	-1392.793180
11-3-15	11-3-16	182-43-31	104-26-10	2.607	-0.650	0	2.525	0	-137726.962	-73771.415	291.019	-189.162350
11-3-16	11-3-17	184-50-33	109-16-43	2.599	-0.858	0	2.453	0	-137727.820	-73768.962	295.997	-253.965426
11-3-17	11-3-18	185-04-33	114-21-16	3.502	-1.444	0	3.190	0	-137729.264	-73765.772	301.640	-435.568160
11-3-18	11-3-19	181-20-48	115-42-04	3.500	-1.518	0	3.154	0	-137730.782	-73762.618	307.984	-467.519712
11-3-19	11-3-20	180-18-51	116-00-55	3.495	-1.533	0	3.141	0	-137732.315	-73759.477	314.279	-481.789707
11-3-20	11-3-21	180-43-05	116-44-00	3.503	-1.576	0	3.129	0	-137733.891	-73756.348	320.549	-505.185224
11-3-21	11-3-22	181-11-56	117-55-56	3.505	-1.642	0	3.097	0	-137735.533	-73753.251	326.775	-536.564550
11-3-22	11-3-23	180-29-23	118-25-19	3.492	-1.662	0	3.071	0	-137737.195	-73750.180	332.943	-553.351266

座標面積計算書 (倍横距法)

点名	点名	内角	方向角	辺長	d x	*	d y	*	X	Y	DMD	2 A
11-3-23	11-3-24	181-24-44	119-50-03	3.506	-1.744	0	3.041	0	-137738.939	-73747.139	339.055	-591.311920
11-3-24	11-3-64	181-13-51	121-03-54	2.886	-1.489	0	2.472	0	-137740.428	-73744.667	344.568	-513.061752
11-3-64	11-3-65	140-29-45	81-33-39	23.007	3.376	0	22.758	0	-137737.052	-73721.909	369.798	1248.438048
11-3-65	11-3-61	136-21-10	37-54-49	137.491	108.472	0	84.484	1	-137628.580	-73637.424	477.041	51745.591352
11-3-61	11-3-63	89-17-03	307-11-52	22.018	13.311	0	-17.539	1	-137615.269	-73654.962	543.988	7241.024268
11-3-63	11-3-62	270-00-00	37-11-52	10.567	8.417	0	6.388	0	-137606.852	-73648.574	532.838	4484.897446
11-3-62	11-3-31	90-00-00	307-11-52	248.488	150.228	1	-197.934	0	-137456.623	-73846.508	341.292	51271.955868
11-3-31	11-3-32	119-14-14	246-26-06	16.996	-6.795	0	-15.579	0	-137463.418	-73862.087	127.779	-868.258305
11-3-32	11-3-33	119-09-55	185-36-01	9.038	-8.995	0	-0.882	0	-137472.413	-73862.969	111.318	-1001.305410
11-3-33	11-3-34	180-22-52	185-58-53	4.002	-3.980	0	-0.417	0	-137476.393	-73863.386	110.019	-437.875620
11-3-34	11-3-35	181-25-42	187-24-35	3.993	-3.960	0	-0.515	0	-137480.353	-73863.901	109.087	-431.984520
11-3-35	11-3-36	181-13-51	188-38-26	4.000	-3.955	0	-0.601	0	-137484.308	-73864.502	107.971	-427.025305
11-3-36	11-3-37	182-17-55	190-56-21	4.000	-3.927	0	-0.759	0	-137488.235	-73865.261	106.611	-418.661397
11-3-37	11-3-38	180-43-48	191-40-09	4.005	-3.922	0	-0.810	0	-137492.157	-73866.071	105.042	-411.974724
11-3-38	11-3-39	181-47-11	193-27-20	3.997	-3.887	0	-0.930	0	-137496.044	-73867.001	103.302	-401.534874
11-3-39	11-3-40	181-48-35	195-15-55	4.003	-3.862	0	-1.054	0	-137499.906	-73868.055	101.318	-391.290116
11-3-40	11-3-41	180-27-27	195-43-22	3.997	-3.847	0	-1.083	0	-137503.753	-73869.138	99.181	-381.549307
11-3-41	11-3-42	181-07-29	196-50-51	78.579	-75.206	0	-22.774	0	-137578.959	-73891.912	75.324	-5664.816744
11-3-42	11-3-43	179-40-15	196-31-06	6.004	-5.756	0	-1.707	0	-137584.715	-73893.619	50.843	-292.652308
11-3-43	11-3-44	179-32-57	196-04-03	5.994	-5.760	0	-1.659	0	-137590.475	-73895.278	47.477	-273.467520
11-3-44	11-3-45	179-41-16	195-45-19	5.999	-5.774	0	-1.629	0	-137596.249	-73896.907	44.189	-255.147286
11-3-45	11-3-46	179-19-54	195-05-13	6.005	-5.798	0	-1.563	0	-137602.047	-73898.470	40.997	-237.700606

座標面積計算書 (倍横距法)

点名	点名	内角	方向角	辺長	d x	*	d y	*	X	Y	DMD	2 A
11-3-46	11-3-47	179-31-49	194-37-02	6.003	-5.809	0	-1.515	0	-137607.856	-73899.985	37.919	-220.271471
11-3-47	11-3-48	179-20-17	193-57-19	6.000	-5.823	0	-1.447	0	-137613.679	-73901.432	34.957	-203.554611
11-3-48	11-3-49	179-40-40	193-37-59	5.999	-5.830	0	-1.414	0	-137619.509	-73902.846	32.096	-187.119680
11-3-49	11-3-50	174-22-10	188-00-09	40.060	-39.670	0	-5.577	0	-137659.179	-73908.423	25.105	-995.915350
11-3-50	11-3-1	183-16-31	191-16-40	49.927	-48.963	0	-9.764	0	-137708.142	-73918.187	9.764	-478.074732
合計	測角数 = 49	8460-00-00		893.161	-0.001	1	-0.002	2			倍面積	95394.456690
											面積	47697.2283450
											地積	47697.22

座標面積計算書 (倍横距法)

8 [街区名 : 11-3]
 [地番 : 11-3(3)]

点名	点名	内角	方向角	辺長	dx	*	dy	*	X	Y	DMD	2A
11-3-64	11-3-25		121-03-54						-137740.742	-73744.146		
11-3-25	11-3-26	181-11-12	122-15-06	3.502	-1.869	0	2.962	0	-137742.611	-73741.184	2.962	-5.535978
11-3-26	11-3-27	181-13-11	123-28-17	3.489	-1.924	0	2.910	0	-137744.535	-73738.274	8.834	-16.996616
11-3-27	11-3-28	138-05-16	81-33-33	12.044	1.768	0	11.914	0	-137742.767	-73726.360	23.658	41.827344
11-3-28	11-3-65	136-21-16	37-54-49	7.244	5.715	0	4.451	0	-137737.052	-73721.909	40.023	228.731445
11-3-65	11-3-64	43-38-50	261-33-39	23.007	-3.376	0	-22.758	0	-137740.428	-73744.667	21.716	-73.313216
11-3-64	11-3-25	39-30-15	121-03-54	0.608	-0.314	0	0.521	0	-137740.742	-73744.146	-0.521	0.163594
合計	測角数 = 6	720-00-00		49.894	0.000	0	0.000	0			倍面積	174.876573
											面積	87.4382865
											地積	87.43

座標面積計算書 (倍横距法)

173 [街区名:11-3]
 [地番 :11-3(2)]

点名	点名	内角	方向角	辺長	dx	*	dy	*	X	Y	DMD	2A
11-3-50	11-3-1		191-16-40						-137708.142	-73918.187		
11-3-1	11-3-2	128-26-11	139-42-51	15.014	-11.453	0	9.708	0	-137719.595	-73908.479	9.708	-111.185724
11-3-2	11-3-3	128-27-06	88-09-57	65.302	2.090	0	65.269	0	-137717.505	-73843.210	84.685	176.991650
11-3-3	11-3-4	180-01-43	88-11-40	3.999	0.126	0	3.997	0	-137717.379	-73839.213	153.951	19.397826
11-3-4	11-3-5	180-25-47	88-37-27	3.998	0.096	0	3.997	0	-137717.283	-73835.216	161.945	15.546720
11-3-5	11-3-6	181-44-03	90-21-30	3.996	-0.025	0	3.996	0	-137717.308	-73831.220	169.938	-4.248450
11-3-6	11-3-7	181-48-17	92-09-47	4.001	-0.151	0	3.998	0	-137717.459	-73827.222	177.932	-26.867732
11-3-7	11-3-8	181-14-56	93-24-43	3.999	-0.238	0	3.992	0	-137717.697	-73823.230	185.922	-44.249436
11-3-8	11-3-9	181-09-06	94-33-49	3.997	-0.318	0	3.984	0	-137718.015	-73819.246	193.898	-61.659564
11-3-9	11-3-10	181-19-15	95-53-04	3.999	-0.410	0	3.978	0	-137718.425	-73815.268	201.860	-82.762600
11-3-10	11-3-11	181-19-33	97-12-37	4.000	-0.502	0	3.968	0	-137718.927	-73811.300	209.806	-105.322612
11-3-11	11-3-12	181-21-49	98-34-26	3.998	-0.596	0	3.953	0	-137719.523	-73807.347	217.727	-129.765292
11-3-12	11-3-13	181-27-00	100-01-26	3.993	-0.695	0	3.932	0	-137720.218	-73803.415	225.612	-156.800340
11-3-13	11-3-14	181-27-57	101-29-23	4.001	-0.797	0	3.921	0	-137721.015	-73799.494	233.465	-186.071605
11-3-14	11-3-15	180-13-16	101-42-39	26.097	-5.297	0	25.554	0	-137726.312	-73773.940	262.940	-1392.793180
11-3-15	11-3-16	182-43-31	104-26-10	2.607	-0.650	0	2.525	0	-137726.962	-73771.415	291.019	-189.162350
11-3-16	11-3-17	184-50-33	109-16-43	2.599	-0.858	0	2.453	0	-137727.820	-73768.962	295.997	-253.965426
11-3-17	11-3-18	185-04-33	114-21-16	3.502	-1.444	0	3.190	0	-137729.264	-73765.772	301.640	-435.568160
11-3-18	11-3-19	181-20-48	115-42-04	3.500	-1.518	0	3.154	0	-137730.782	-73762.618	307.984	-467.519712
11-3-19	11-3-20	180-18-51	116-00-55	3.495	-1.533	0	3.141	0	-137732.315	-73759.477	314.279	-481.789707
11-3-20	11-3-21	180-43-05	116-44-00	3.503	-1.576	0	3.129	0	-137733.891	-73756.348	320.549	-505.185224
11-3-21	11-3-22	181-11-56	117-55-56	3.505	-1.642	0	3.097	0	-137735.533	-73753.251	326.775	-536.564550
11-3-22	11-3-23	180-29-23	118-25-19	3.492	-1.662	0	3.071	0	-137737.195	-73750.180	332.943	-553.351266

座標面積計算書 (倍横距法)

点名	点名	内角	方向角	辺長	dx	*	dy	*	X	Y	DMD	2A
N-3-23	11-3-24	181-24-44	119-50-03	3.506	-1.744	0	3.041	0	-137738.939	-73747.139	339.055	-591.311920
11-3-24	11-3-25	181-13-51	121-03-54	3.494	-1.803	0	2.993	0	-137740.742	-73744.146	345.089	-622.195467
11-3-25	11-3-26	181-11-12	122-15-06	3.502	-1.869	0	2.962	0	-137742.611	-73741.184	351.044	-656.101236
11-3-26	11-3-27	181-13-11	123-28-17	3.489	-1.924	0	2.910	0	-137744.535	-73738.274	356.916	-686.706384
11-3-27	11-3-28	138-05-16	81-33-33	12.044	1.768	0	11.914	0	-137742.767	-73726.360	371.740	657.236320
11-3-28	11-3-61	136-21-16	37-54-49	144.735	114.187	0	88.936	0	-137628.580	-73637.424	472.590	53963.634330
11-3-61	11-3-63	89-17-03	307-11-52	22.018	13.311	0	-17.539	1	-137615.269	-73654.962	543.988	7241.024268
11-3-63	11-3-62	270-00-00	37-11-52	10.567	8.417	0	6.388	0	-137606.852	-73648.574	532.838	4484.897446
11-3-62	11-3-31	90-00-00	307-11-52	248.488	150.228	1	-197.934	0	-137456.623	-73846.508	341.292	51271.955868
11-3-31	11-3-32	119-14-14	246-26-06	16.996	-6.795	0	-15.579	0	-137463.418	-73862.087	127.779	-868.258305
11-3-32	11-3-33	119-09-55	185-36-01	9.038	-8.995	0	-0.882	0	-137472.413	-73862.969	111.318	-1001.305410
11-3-33	11-3-34	180-22-52	185-58-53	4.002	-3.980	0	-0.417	0	-137476.393	-73863.386	110.019	-437.875620
11-3-34	11-3-35	181-25-42	187-24-35	3.993	-3.960	0	-0.515	0	-137480.353	-73863.901	109.087	-431.984520
11-3-35	11-3-36	181-13-51	188-38-26	4.000	-3.955	0	-0.601	0	-137484.308	-73864.502	107.971	-427.025305
11-3-36	11-3-37	182-17-55	190-56-21	4.000	-3.927	0	-0.759	0	-137488.235	-73865.261	106.611	-418.661397
11-3-37	11-3-38	180-43-48	191-40-09	4.005	-3.922	0	-0.810	0	-137492.157	-73866.071	105.042	-411.974724
11-3-38	11-3-39	181-47-11	193-27-20	3.997	-3.887	0	-0.930	0	-137496.044	-73867.001	103.302	-401.534874
11-3-39	11-3-40	181-48-35	195-15-55	4.003	-3.862	0	-1.054	0	-137499.906	-73868.055	101.318	-391.290116
11-3-40	11-3-41	180-27-27	195-43-22	3.997	-3.847	0	-1.083	0	-137503.753	-73869.138	99.181	-381.549307
11-3-41	11-3-42	181-07-29	196-50-51	78.579	-75.206	0	-22.774	0	-137578.959	-73891.912	75.324	-5664.816744
11-3-42	11-3-43	179-40-15	196-31-06	6.004	-5.756	0	-1.707	0	-137584.715	-73893.619	50.843	-292.652308
11-3-43	11-3-44	179-32-57	196-04-03	5.994	-5.760	0	-1.659	0	-137590.475	-73895.278	47.477	-273.467520

座標面積計算書 (倍横距法)

点名	点名	内角	方向角	辺長	dx	*	dy	*	X	Y	DMD	2A
11-3-44	11-3-45	179-41-16	195-45-19	5.999	-5.774	0	-1.629	0	-137596.249	-73896.907	44.189	-255.147286
11-3-45	11-3-46	179-19-54	195-05-13	6.005	-5.798	0	-1.563	0	-137602.047	-73898.470	40.997	-237.700606
11-3-46	11-3-47	179-31-49	194-37-02	6.003	-5.809	0	-1.515	0	-137607.856	-73899.985	37.919	-220.271471
11-3-47	11-3-48	179-20-17	193-57-19	6.000	-5.823	0	-1.447	0	-137613.679	-73901.432	34.957	-203.554611
11-3-48	11-3-49	179-40-40	193-37-59	5.999	-5.830	0	-1.414	0	-137619.509	-73902.846	32.096	-187.119680
11-3-49	11-3-50	174-22-10	188-00-09	40.060	-39.670	0	-5.577	0	-137659.179	-73908.423	25.105	-995.915350
11-3-50	11-3-1	183-16-31	191-16-40	49.927	-48.963	0	-9.764	0	-137708.142	-73918.187	9.764	-478.074732
合計	測角数 = 51	8820-00-00		897.041	-0.001	1	-0.001	1			倍面積	95569.356605
											面積	47784.6783025
											地積	47784.67