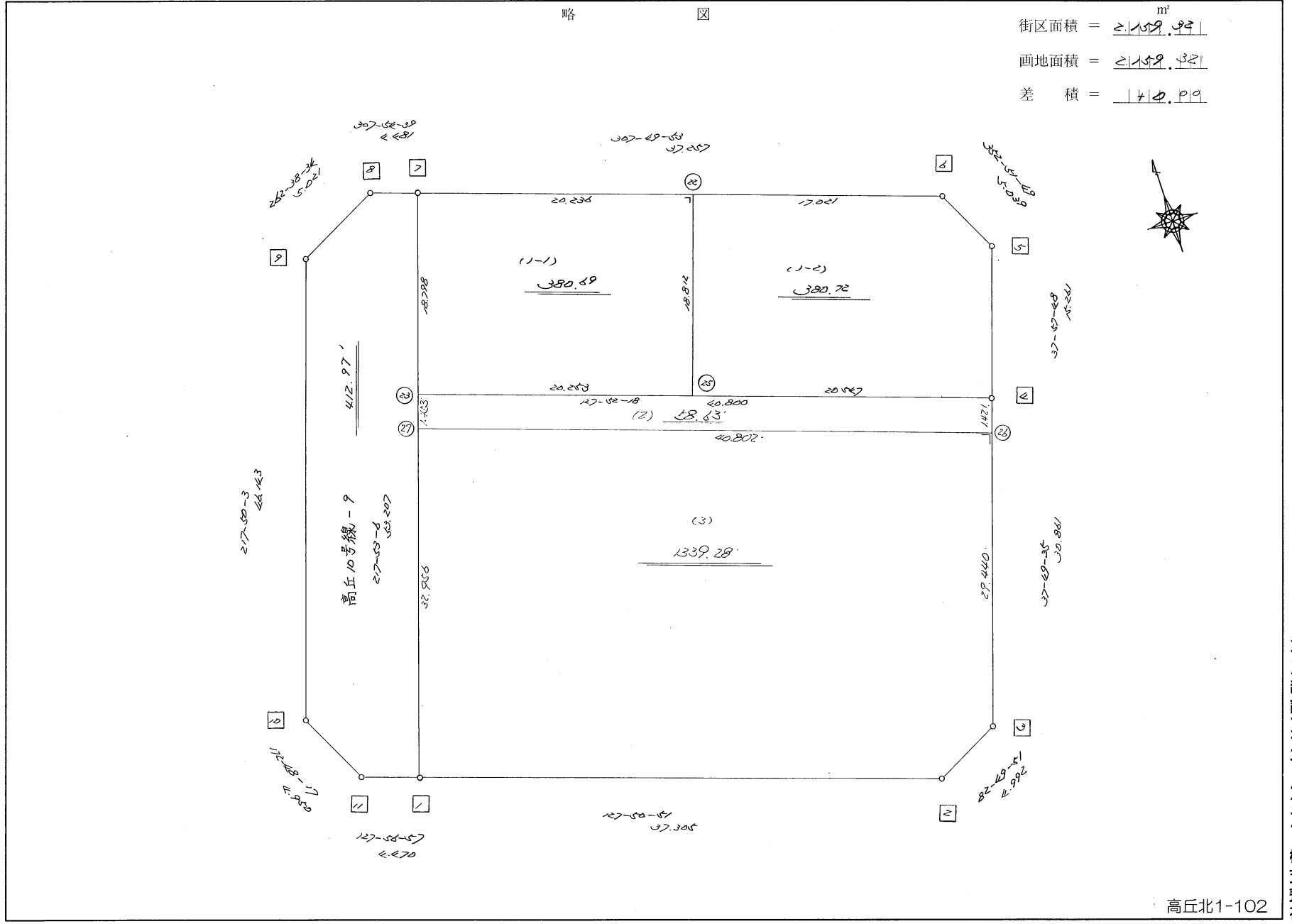


略 図

街区面積 = ≥ 1159.94 m²
 画地面積 = ≥ 1159.94
 差 積 = 42.919

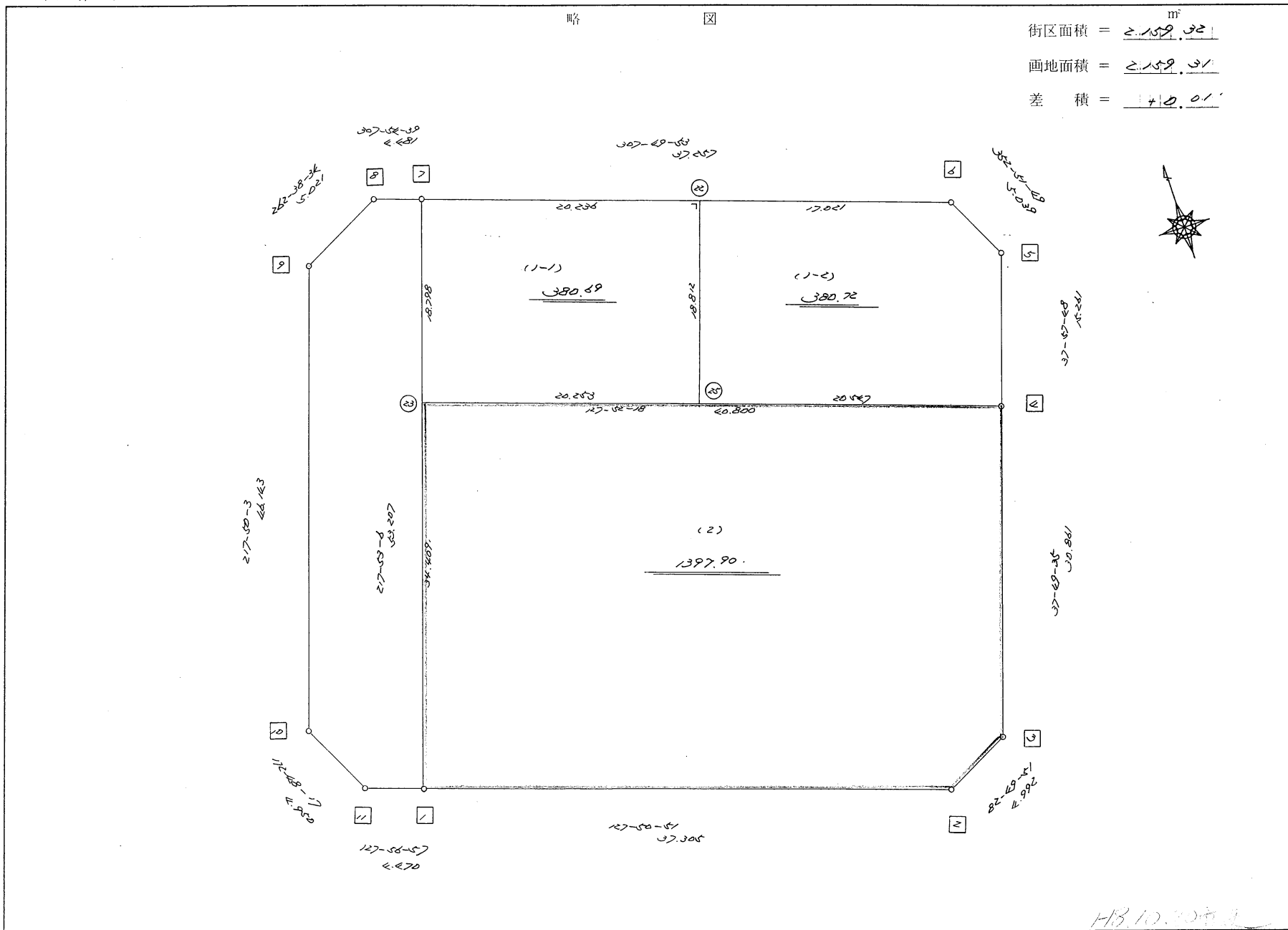


高丘北1-102

街区点番号 □ ~ □ 筆界点番号 () ~ () 画地番号 (/) ~ (/)

略 図

街区面積 = $\frac{2,159.37}{m^2}$
 画地面積 = $\frac{2,159.37}{m^2}$
 差 積 = $\frac{410.01}{m^2}$



街区点番号 [] ~ [] 境界点番号 () ~ () 画地番号 / ~ /

不二綜合ニッセイビル下株式会社

H.B. 10. 20. 19. 11

<< H.7.3 高丘・葵 地区 >>

| * * 面積計算 (倍横距法) * * | | | | | ワーク名: 539BL | | | | | |
|---------------------|-------|-----------|-----------|--------|-------------|---------|-------------|------------|---------|--------------|
| 器械点 | 視準点 | 夾角 | 方向角 | 距離 | 緯距 | 経距 | X座標 | Y座標 | 倍横距 | 倍面積 |
| 539-7 | 539-1 | | 217-53-06 | | | | -137718.582 | -72486.622 | | |
| 539-1 | 539-2 | 89-57-45 | 127-50-51 | 37.305 | -22.889 | 29.458 | -137741.471 | -72457.164 | 29.458 | -674.264162 |
| 539-2 | 539-3 | 134-59-00 | 82-49-51 | 4.992 | 0.623 | 4.953 | -137740.848 | -72452.211 | 63.869 | 39.790387 |
| 539-3 | 539-4 | 134-59-44 | 37-49-35 | 30.861 | 24.376 | 18.926 | -137716.472 | -72433.285 | 87.748 | 2138.945248 |
| 539-4 | 539-5 | 180-08-13 | 37-57-48 | 15.261 | 12.032 | 9.388 | -137704.440 | -72423.897 | 116.062 | 1396.457984 |
| 539-5 | 539-6 | 134-54-01 | 352-51-49 | 5.039 | 5.000 | -0.626 | -137699.440 | -72424.523 | 124.824 | 624.120000 |
| 539-6 | 539-7 | 134-58-04 | 307-49-53 | 37.257 | 22.851 | -29.426 | -137676.589 | -72453.949 | 94.772 | 2165.634972 |
| 539-7 | 539-1 | 90-03-13 | 217-53-06 | 53.207 | -41.993 | -32.673 | -137718.582 | -72486.622 | 32.673 | -1372.037289 |
| | | | | | | | | | 倍面積 | 4318.647140 |
| | | | | | | | | | 面積 | 2159.323570 |

<< H.7.3 高丘・葵 地区 >>

| * * 面積計算 (倍横距法) * * | | | | | ワーク名: 緑道539 高丘10号線-8' | | | | | |
|---------------------|--------|-----------|-----------|--------|----------------------------------|---------|-------------|------------|--------|-------------|
| 器械点 | 視準点 | 夾角 | 方向角 | 距離 | 緯距 | 経距 | X座標 | Y座標 | 倍横距 | 倍面積 |
| 539-11 | 539-1 | | 127-56-57 | | | | -137718.582 | -72486.622 | | |
| 539-1 | 539-7 | 89-56-09 | 37-53-06 | 53.207 | 41.993 | 32.673 | -137676.589 | -72453.949 | 32.673 | 1372.037289 |
| 539-7 | 539-8 | 90-01-33 | 307-54-39 | 4.481 | 2.753 | -3.535 | -137673.836 | -72457.484 | 61.811 | 170.165683 |
| 539-8 | 539-9 | 134-43-55 | 262-38-34 | 5.021 | -0.643 | -4.980 | -137674.479 | -72462.464 | 53.296 | -34.269328 |
| 539-9 | 539-10 | 135-11-29 | 217-50-03 | 46.143 | -36.443 | -28.303 | -137710.922 | -72490.767 | 20.013 | -729.333759 |
| 539-10 | 539-11 | 134-58-14 | 172-48-17 | 4.950 | -4.911 | 0.620 | -137715.833 | -72490.147 | -7.670 | 37.667370 |
| 539-11 | 539-1 | 135-08-40 | 127-56-57 | 4.470 | -2.749 | 3.525 | -137718.582 | -72486.622 | -3.525 | 9.690225 |
| | | | | | | | | | 倍面積 | 825.957480 |
| | | | | | | | | | 面積 | 412.978740 |

<< H.7.3 高丘・葵 地区 >>

| * * 面積計算 (倍横距法) * * | | | | | ワーク名: 539BL-1-1 | | | | | |
|---------------------|--------|----------|-----------|--------|-----------------|---------|-------------|------------|--------|-------------|
| 器械点 | 視準点 | 夾角 | 方向角 | 距離 | 緯距 | 経距 | X座標 | Y座標 | 倍横距 | 倍面積 |
| 539-7 | 539-23 | | 217-53-06 | | | | -137691.425 | -72465.492 | | |
| 539-23 | 539-25 | 89-59-12 | 127-52-18 | 20.253 | -12.433 | 15.987 | -137703.858 | -72449.505 | 15.987 | -198.766371 |
| 539-25 | 539-22 | 89-57-35 | 37-49-53 | 18.812 | 14.858 | 11.539 | -137689.000 | -72437.966 | 43.513 | 646.516154 |
| 539-22 | 539-7 | 90-00-00 | 307-49-53 | 20.236 | 12.411 | -15.983 | -137676.589 | -72453.949 | 39.069 | 484.885359 |
| 539-7 | 539-23 | 90-03-13 | 217-53-06 | 18.798 | -14.836 | -11.543 | -137691.425 | -72465.492 | 11.543 | -171.251948 |
| | | | | | | | | | 倍面積 | 761.383194 |
| | | | | | | | | | 面積 | 380.691597 |

<< H.7.3 高丘・葵 地区 >>

| * * 面積計算 (倍横距法) * * | | | | | ワーク名: 539BL-1-2 | | | | | |
|---------------------|--------|-----------|-----------|--------|-----------------|---------|-------------|------------|--------|-------------|
| 器械点 | 視準点 | 夾角 | 方向角 | 距離 | 緯距 | 経距 | X座標 | Y座標 | 倍横距 | 倍面積 |
| 539-22 | 539-25 | | 217-49-53 | | | | -137703.858 | -72449.505 | | |
| 539-25 | 539-4 | 90-02-25 | 127-52-18 | 20.547 | -12.614 | 16.220 | -137716.472 | -72433.285 | 16.220 | -204.599080 |
| 539-4 | 539-5 | 90-05-30 | 37-57-48 | 15.261 | 12.032 | 9.388 | -137704.440 | -72423.897 | 41.828 | 503.274496 |
| 539-5 | 539-6 | 134-54-01 | 352-51-49 | 5.039 | 5.000 | -0.626 | -137699.440 | -72424.523 | 50.590 | 252.950000 |
| 539-6 | 539-22 | 134-58-04 | 307-49-53 | 17.021 | 10.440 | -13.443 | -137689.000 | -72437.966 | 36.521 | 381.279240 |
| 539-22 | 539-25 | 90-00-00 | 217-49-53 | 18.812 | -14.858 | -11.539 | -137703.858 | -72449.505 | 11.539 | -171.446462 |
| | | | | | | | | | 倍面積 | 761.458194 |
| | | | | | | | | | 面積 | 380.729097 |

座標面積計算書 (倍換距法)

304 [街区名 : 539]
 [地番 : 539 (2)]

| 点名 | 点名 | 内角 | 方向角 | 辺長 | dx | * | dy | * | X | Y | DMD | 2A |
|--------|----------|-----------|-----------|---------|---------|---|---------|----|-------------|------------|---------|-------------|
| 539-26 | 539-4 / | | 37-49-35 | | | | | | -137716.472 | -72433.285 | | |
| 539-4 | 539-23 / | 90-02-43 | 307-52-18 | 40.800, | 25.047 | 0 | -32.207 | 0 | -137691.425 | -72465.492 | -32.207 | -806.688729 |
| 539-23 | 539-27, | 90-00-48 | 217-53-06 | 1.453, | -1.147 | 0 | -0.892 | -1 | -137692.572 | -72466.385 | -65.307 | 74.907129 |
| 539-27 | 539-26, | 89-56-29 | 127-49-35 | 40.802, | -25.023 | 1 | 32.228 | 1 | -137717.594 | -72434.156 | -33.971 | 850.022362 |
| 539-26 | 539-4 / | 90-00-00 | 37-49-35 | 1.421, | 1.122 | 0 | 0.871 | 0 | -137716.472 | -72433.285 | -0.871 | -0.977262 |
| 合計 | 測角数 = 4 | 360-00-00 | | 84.476 | -0.001 | 1 | 0.000 | 0 | | | 倍面積 | 117.263500 |
| | | | | | | | | | | | 面積 | 58.6317500 |
| | | | | | | | | | | | 地積 | 58.63 |

304 [街区名 : 539]
 [地番 : 539 (3)]

| 点名 | 点名 | 内角 | 方向角 | 辺長 | dx | * | dy | * | X | Y | DMD | 2A |
|--------|----------|-----------|-----------|----------|---------|----|---------|----|-------------|------------|--------|--------------|
| 539-27 | 539-1 / | | 217-53-06 | | | | | | -137718.582 | -72486.622 | | |
| 539-1 | 539-2 / | 89-57-45 | 127-50-51 | 37.305, | -22.889 | 0 | 29.458 | 0 | -137741.471 | -72457.164 | 29.458 | -674.264162 |
| 539-2 | 539-3 / | 134-59-00 | 82-49-51 | 4.992, | 0.623 | 0 | 4.953 | 0 | -137740.848 | -72452.211 | 63.869 | 39.790387 |
| 539-3 | 539-26 / | 134-59-44 | 37-49-35 | 29.440, | 23.254 | 0 | 18.055 | 0 | -137717.594 | -72434.156 | 86.877 | 2020.237758 |
| 539-26 | 539-27, | 90-00-00 | 307-49-35 | 40.802, | 25.023 | -1 | -32.228 | -1 | -137692.572 | -72466.385 | 72.703 | 1819.174466 |
| 539-27 | 539-1 | 90-03-31 | 217-53-06 | 32.956 / | -26.010 | 0 | -20.238 | 1 | -137718.582 | -72486.622 | 20.237 | -526.364370 |
| 合計 | 測角数 = 5 | 540-00-00 | | 145.495 | 0.001 | -1 | 0.000 | 0 | | | 倍面積 | 2678.574079 |
| | | | | | | | | | | | 面積 | 1339.2870395 |
| | | | | | | | | | | | 地積 | 1339.28 / |

<< 高丘葵土地地区画整理事業 >>

※ ※ 面積計算 (倍横距法) ※ ※

| 地番 : 539BL-2 | | | | | | | | | | |
|--------------|--------|-----------|-----------|--------|---------|---------|-------------|------------|--------|-------------|
| 器械点 | 視準点 | 内角 | 方向角 | 距離 | 緯距 | 經距 | X座標 | Y座標 | 倍横距 | 倍面積 |
| 539-1 | 539-2 | 89-57-45 | 127-50-51 | 37.305 | -22.889 | 29.458 | -137741.471 | -72457.164 | 29.458 | -674.264162 |
| 539-2 | 539-3 | 134-59-00 | 82-49-51 | 4.992 | 0.623 | 4.953 | -137740.848 | -72452.211 | 63.869 | 39.790387 |
| 539-3 | 539-4 | 134-59-44 | 37-49-35 | 30.861 | 24.376 | 18.926 | -137716.472 | -72433.285 | 87.748 | 2138.945248 |
| 539-4 | 539-23 | 90-02-43 | 307-52-18 | 40.800 | 25.047 | 32.207 | -137691.425 | -72465.492 | 74.467 | 1865.167564 |
| 539-23 | 539-1 | 90-00-48 | 217-53-06 | 34.409 | -27.157 | -21.130 | -137718.582 | -72486.622 | 21.130 | -573.819760 |
| | | | | | | | | | 倍面積 | 2795.819276 |
| | | | | | | | | | 面積 | 1397.90 |