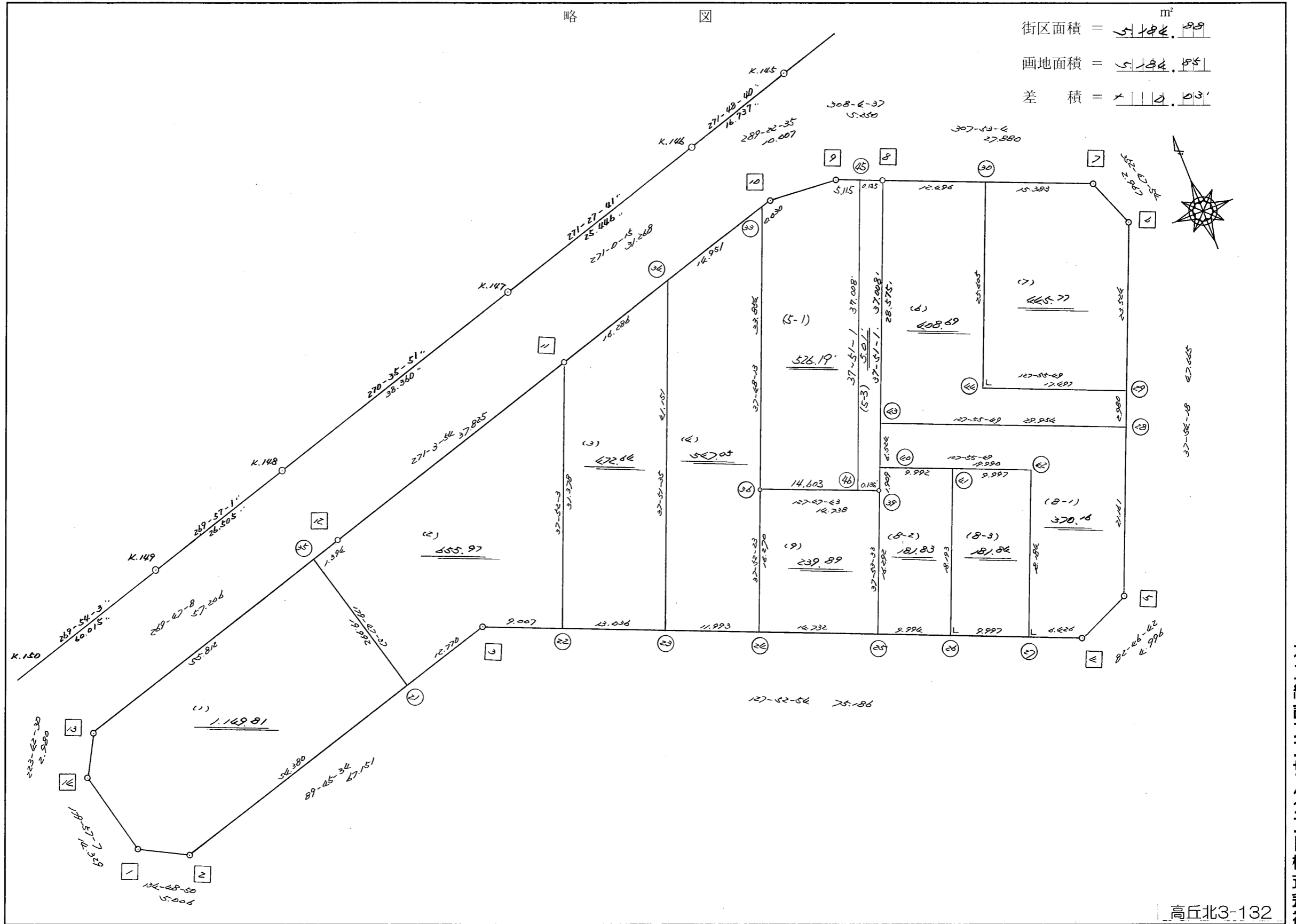


略 図

街区面積 = $5,144.89 \text{ m}^2$
 画地面積 = $5,144.89$
 差 積 = 0.03



高丘北3-132

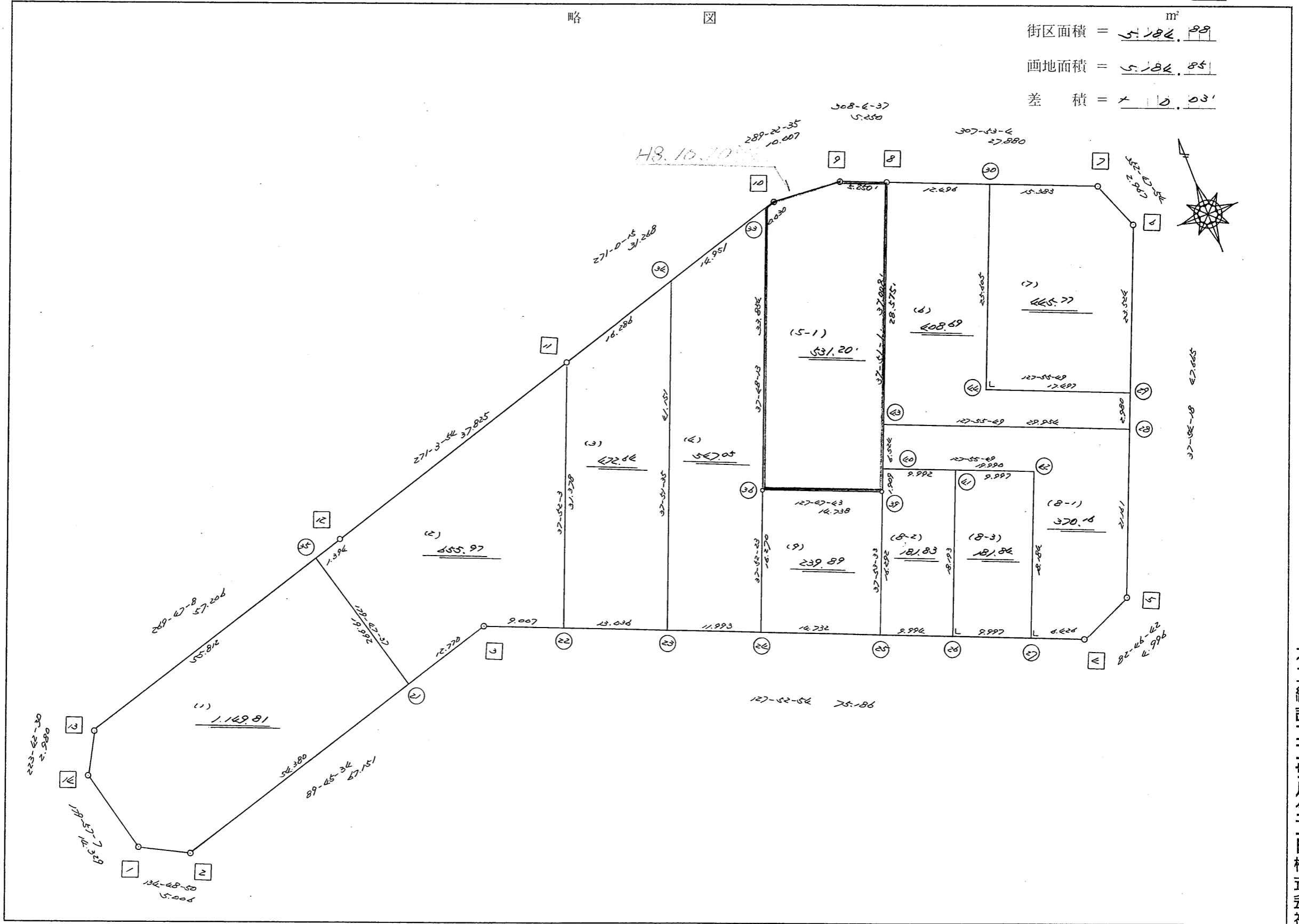
街区点番号 1 ~ 14

筆界点番号 21 ~ 44

画地番号 (1) ~ (9)

略 図

街区面積 = 5,192.88 m²
 画地面積 = 5,182.85
 差 積 = 9.03



街区点番号 1 ~ 14 筆界点番号 (1) ~ (46) 画地番号 (1) ~ (9)

<< H.5 高丘葵 地区 >>

| * * 面積計算 (倍横距法) * | | | | | * * ワーク名: 256BL | | | | | |
|-------------------|--------|-----------|-----------|--------|-----------------|---------|-------------|------------|---------|--------------|
| 器械点 | 視準点 | 夾角 | 方向角 | 距離 | 緯距 | 経距 | X座標 | Y座標 | 倍横距 | 倍面積 |
| 256-14 | 256-1 | | 179-57-07 | | | | -136946.634 | -72850.512 | | |
| 256-1 | 256-2 | 134-51-43 | 134-48-50 | 5.006 | -3.528 | 3.551 | -136950.162 | -72846.961 | 3.551 | -12.527928 |
| 256-2 | 256-3 | 134-56-44 | 89-45-34 | 67.151 | 0.282 | 67.150 | -136949.880 | -72779.811 | 74.252 | 20.939064 |
| 256-3 | 256-4 | 218-07-20 | 127-52-54 | 75.186 | -46.167 | 59.343 | -136996.047 | -72720.468 | 200.745 | -9267.794415 |
| 256-4 | 256-5 | 134-53-48 | 82-46-42 | 4.996 | 0.628 | 4.956 | -136995.419 | -72715.512 | 265.044 | 166.447632 |
| 256-5 | 256-6 | 135-07-36 | 37-54-18 | 47.665 | 37.609 | 29.283 | -136957.810 | -72686.229 | 299.283 | 11255.734347 |
| 256-6 | 256-7 | 134-53-36 | 352-47-54 | 2.967 | 2.944 | -0.372 | -136954.866 | -72686.601 | 328.194 | 966.203136 |
| 256-7 | 256-8 | 135-05-10 | 307-53-04 | 27.880 | 17.120 | -22.004 | -136937.746 | -72708.605 | 305.818 | 5235.604160 |
| 256-8 | 256-9 | 180-11-33 | 308-04-37 | 5.250 | 3.238 | -4.133 | -136934.508 | -72712.738 | 279.681 | 905.607078 |
| 256-9 | 256-10 | 161-17-58 | 289-22-35 | 10.007 | 3.320 | -9.440 | -136931.188 | -72722.178 | 266.108 | 883.478560 |
| 256-10 | 256-11 | 161-37-40 | 271-00-15 | 31.268 | 0.548 | -31.263 | -136930.640 | -72753.441 | 225.405 | 123.521940 |
| 256-11 | 256-12 | 180-03-39 | 271-03-54 | 37.825 | 0.703 | -37.818 | -136929.937 | -72791.259 | 156.324 | 109.895772 |
| 256-12 | 256-13 | 178-43-14 | 269-47-08 | 57.206 | -0.214 | -57.206 | -136930.151 | -72848.465 | 61.300 | -13.118200 |
| 256-13 | 256-14 | 133-55-22 | 223-42-30 | 2.980 | -2.154 | -2.059 | -136932.305 | -72850.524 | 2.035 | -4.383390 |
| 256-14 | 256-1 | 136-14-37 | 179-57-07 | 14.329 | -14.329 | 0.012 | -136946.634 | -72850.512 | -0.012 | 0.171948 |
| | | | | | | | | | 倍面積 | 10369.779704 |
| | | | | | | | | | 面積 | 5184.889852 |

<< H.5 高丘葵 地区 >>

| * * 面積計算 (倍横距法) * | | | | | ワーク名: 256BL-1 | | | | | |
|-------------------|--------|-----------|-----------|--------|---------------|---------|-------------|------------|---------|-------------|
| 器械点 | 視準点 | 夾角 | 方向角 | 距離 | 緯距 | 経距 | X座標 | Y座標 | 倍横距 | 倍面積 |
| 256-14 | 256-1 | | 179-57-07 | | | | -136946.634 | -72850.512 | | |
| 256-1 | 256-2 | 134-51-43 | 134-48-50 | 5.006 | -3.528 | 3.551 | -136950.162 | -72846.961 | 3.551 | -12.527928 |
| 256-2 | 256-21 | 134-56-44 | 89-45-34 | 54.380 | 0.228 | 54.380 | -136949.934 | -72792.581 | 61.482 | 14.017896 |
| 256-21 | 256-35 | 90-02-03 | 359-47-37 | 19.992 | 19.992 | -0.072 | -136929.942 | -72792.653 | 115.790 | 2314.873680 |
| 256-35 | 256-13 | 89-59-31 | 269-47-08 | 55.812 | -0.209 | -55.812 | -136930.151 | -72848.465 | 59.906 | -12.520354 |
| 256-13 | 256-14 | 133-55-22 | 223-42-30 | 2.980 | -2.154 | -2.059 | -136932.305 | -72850.524 | 2.035 | -4.383390 |
| 256-14 | 256-1 | 136-14-37 | 179-57-07 | 14.329 | -14.329 | 0.012 | -136946.634 | -72850.512 | -0.012 | 0.171948 |
| | | | | | | | | | 倍面積 | 2299.631852 |
| | | | | | | | | | 面積 | 1149.815926 |

<< H.5 高丘葵 地区 >>

| * * 面積計算 (倍横距法) * | | | | | ワーク名: 256BL-2 | | | | | |
|-------------------|--------|-----------|-----------|--------|---------------|---------|-------------|------------|--------|-------------|
| 器械点 | 視準点 | 夾角 | 方向角 | 距離 | 緯距 | 経距 | X座標 | Y座標 | 倍横距 | 倍面積 |
| 256-35 | 256-21 | | 179-47-37 | | | | -136949.934 | -72792.581 | | |
| 256-21 | 256-3 | 89-57-57 | 89-45-34 | 12.770 | 0.054 | 12.770 | -136949.880 | -72779.811 | 12.770 | 0.689580 |
| 256-3 | 256-22 | 218-07-20 | 127-52-54 | 9.007 | -5.531 | 7.109 | -136955.411 | -72772.702 | 32.649 | -180.581619 |
| 256-22 | 256-11 | 89-59-09 | 37-52-03 | 31.378 | 24.771 | 19.261 | -136930.640 | -72753.441 | 59.019 | 1461.959649 |
| 256-11 | 256-12 | 53-11-51 | 271-03-54 | 37.825 | 0.703 | -37.818 | -136929.937 | -72791.259 | 40.462 | 28.444786 |
| 256-12 | 256-35 | 178-43-14 | 269-47-08 | 1.394 | -0.005 | -1.394 | -136929.942 | -72792.653 | 1.250 | -0.006250 |
| 256-35 | 256-21 | 90-00-29 | 179-47-37 | 19.992 | -19.992 | 0.072 | -136949.934 | -72792.581 | -0.072 | 1.439424 |
| | | | | | | | | | 倍面積 | 1311.945570 |
| | | | | | | | | | 面積 | 655.972785 |

<< H.5 高丘葵 地区 >>

| * * 面積計算 (倍横距法) * | | | | | * * ワーク名: 256BL-3 | | | | | |
|-------------------|--------|-----------|-----------|--------|-------------------|---------|-------------|------------|--------|-------------|
| 器械点 | 視準点 | 夾角 | 方向角 | 距離 | 緯距 | 経距 | X座標 | Y座標 | 倍横距 | 倍面積 |
| 256-11 | 256-22 | | 217-52-03 | | | | -136955.411 | -72772.702 | | |
| 256-22 | 256-23 | 90-00-51 | 127-52-54 | 13.036 | -8.004 | 10.289 | -136963.415 | -72762.413 | 10.289 | -82.353156 |
| 256-23 | 256-34 | 89-58-41 | 37-51-35 | 41.151 | 32.490 | 25.256 | -136930.925 | -72737.157 | 45.834 | 1489.146660 |
| 256-34 | 256-11 | 53-08-40 | 271-00-15 | 16.286 | 0.285 | -16.284 | -136930.640 | -72753.441 | 54.806 | 15.619710 |
| 256-11 | 256-22 | 126-51-48 | 217-52-03 | 31.378 | -24.771 | -19.261 | -136955.411 | -72772.702 | 19.261 | -477.114231 |
| | | | | | | | | | 倍面積 | 945.298983 |
| | | | | | | | | | 面積 | 472.6494915 |

<< H.5 高丘葵 地区 >>

| * * 面積計算 (倍横距法) * | | | | | * * ワーク名: 256BL-4 | | | | | |
|-------------------|--------|-----------|-----------|--------|-------------------|---------|-------------|------------|--------|-------------|
| 器械点 | 視準点 | 夾角 | 方向角 | 距離 | 緯距 | 経距 | X座標 | Y座標 | 倍横距 | 倍面積 |
| 256-34 | 256-23 | | 217-51-35 | | | | -136963.415 | -72762.413 | | |
| 256-23 | 256-24 | 90-01-19 | 127-52-54 | 11.993 | -7.364 | 9.466 | -136970.779 | -72752.947 | 9.466 | -69.707624 |
| 256-24 | 256-36 | 89-59-29 | 37-52-23 | 16.270 | 12.843 | 9.988 | -136957.936 | -72742.959 | 28.920 | 371.419560 |
| 256-36 | 256-33 | 179-55-50 | 37-48-13 | 33.854 | 26.749 | 20.751 | -136931.187 | -72722.208 | 59.659 | 1595.818591 |
| 256-33 | 256-34 | 53-12-02 | 271-00-15 | 14.951 | 0.262 | -14.949 | -136930.925 | -72737.157 | 65.461 | 17.150782 |
| 256-34 | 256-23 | 126-51-20 | 217-51-35 | 41.151 | -32.490 | -25.256 | -136963.415 | -72762.413 | 25.256 | -820.567440 |
| | | | | | | | | | 倍面積 | 1094.113869 |
| | | | | | | | | | 面積 | 547.0569345 |

座標面積計算書 (倍横距法)

17 [街区名 : 256]
 [地番 : 256 (5-1)]

| 点名 | 点名 | 内角 | 方向角 | 辺長 | dx | * | dy | * | X | Y | DMD | 2A |
|--------|---------|-----------|-----------|---------|---------|---|---------|---|-------------|------------|---------|-------------|
| 256-45 | 256-9✓ | | 308-04-37 | | | | | | -136934.508 | -72712.738 | | |
| 256-9 | 256-10✓ | 161-17-58 | 289-22-35 | 10.007✓ | 3.320 | 0 | -9.440 | 0 | -136931.188 | -72722.178 | -9.440 | -31.340800 |
| 256-10 | 256-33✓ | 161-37-38 | 271-00-13 | 0.030✓ | 0.001 | 0 | -0.030 | 0 | -136931.187 | -72722.208 | -18.910 | -0.018910 |
| 256-33 | 256-36✓ | 126-48-00 | 217-48-13 | 33.854✓ | -26.749 | 0 | -20.751 | 0 | -136957.936 | -72742.959 | -39.691 | 1061.694559 |
| 256-36 | 256-46✓ | 89-59-30 | 127-47-43 | 14.603✓ | -8.949 | 0 | 11.539 | 0 | -136966.885 | -72731.420 | -48.903 | 437.632947 |
| 256-46 | 256-45✓ | 90-03-18 | 37-51-01 | 37.008✓ | 29.222 | 0 | 22.708 | 0 | -136937.663 | -72708.712 | -14.656 | -428.277632 |
| 256-45 | 256-9✓ | 90-13-36 | 308-04-37 | 5.115✓ | 3.155 | 0 | -4.026 | 0 | -136934.508 | -72712.738 | 4.026 | 12.702030 |
| 合計 | 測角数 = 6 | 720-00-00 | | 100.617 | 0.000 | 0 | 0.000 | 0 | | | 倍面積 | 1052.392194 |
| | | | | | | | | | | | 面積 | 526.1960970 |
| | | | | | | | | | | | 地積 | 526.19✓ |

17 [街区名 : 256]
 [地番 : 256 (5-3)]

| 点名 | 点名 | 内角 | 方向角 | 辺長 | dx | * | dy | * | X | Y | DMD | 2A |
|--------|---------|-----------|-----------|---------|---------|---|---------|----|-------------|------------|---------|-------------|
| 256-39 | 256-8✓ | | 37-51-01 | | | | | | -136937.746 | -72708.605 | | |
| 256-8 | 256-45✓ | 90-13-36 | 308-04-37 | 0.135✓ | 0.083 | 0 | -0.106 | -1 | -136937.663 | -72708.712 | -0.107 | -0.008881 |
| 256-45 | 256-46✓ | 89-46-24 | 217-51-01 | 37.008✓ | -29.222 | 0 | -22.708 | 0 | -136966.885 | -72731.420 | -22.922 | 669.826684 |
| 256-46 | 256-39✓ | 89-56-42 | 127-47-43 | 0.135✓ | -0.083 | 0 | 0.107 | 0 | -136966.968 | -72731.313 | -45.523 | 3.778409 |
| 256-39 | 256-8✓ | 90-03-18 | 37-51-01 | 37.008✓ | 29.222 | 0 | 22.708 | 0 | -136937.746 | -72708.605 | -22.708 | -663.573176 |
| 合計 | 測角数 = 4 | 360-00-00 | | 74.286 | 0.000 | 0 | 0.001 | -1 | | | 倍面積 | 10.023036 |
| | | | | | | | | | | | 面積 | 5.0115180 |
| | | | | | | | | | | | 地積 | 5.01✓ |

※ ※ 面積計算 (倍横距法) ※ ※

| 地番 器械点 | 番 : 視準点 | 256BL-5-1 内角 | 方向角 | 距離 | 緯距 | 経距 | X座標 | Y座標 | 倍横距 | 倍面積 |
|-----------|------------|-----------------|-----------|--------|---------|---------|-------------|------------|--------|-------------|
| 256-36 | 256-39 | 89-59-30 | 127-47-43 | 14.738 | -9.032 | 11.646 | -136966.968 | -72731.313 | 11.646 | -105.186672 |
| 256-39 | 256-8 | 90-03-18 | 37-51-01 | 37.008 | 29.222 | 22.708 | -136937.746 | -72708.605 | 46.000 | 1344.212000 |
| 256-8 | 256-9 | 90-13-36 | 308-04-37 | 5.250 | 3.238 | -4.133 | -136934.508 | -72712.738 | 64.575 | 209.093850 |
| 256-9 | 256-10 | 161-17-58 | 289-22-35 | 10.007 | 3.320 | -9.440 | -136931.188 | -72722.178 | 51.002 | 169.326640 |
| 256-10 | 256-33 | 161-37-38 | 271-00-13 | 0.030 | 0.001 | -0.030 | -136931.187 | -72722.208 | 41.532 | 0.021845 |
| 256-33 | 256-36 | 126-48-00 | 217-48-13 | 33.854 | -26.749 | -20.751 | -136957.936 | -72742.959 | 20.751 | -555.057967 |
| | | | | | | | | | 倍面積 | 1062.409696 |
| | | | | | | | | | 面積 | 531.20 ✓ |

<< H.5 高丘葵 地区 >>

| * * 面積計算 (倍横距法) * | | | | | * * ワーク名: 256BL-5-3 | | | | | |
|-------------------|--------|----------|-----------|--------|---------------------|---------|-------------|------------|--------|-------------|
| 器械点 | 視準点 | 夾角 | 方向角 | 距離 | 緯距 | 経距 | X座標 | Y座標 | 倍横距 | 倍面積 |
| 256-31 | 256-38 | | 217-51-01 | | | | -136966.885 | -72731.420 | | |
| 256-38 | 256-39 | 89-56-42 | 127-47-43 | 0.135 | -0.083 | 0.107 | -136966.968 | -72731.313 | 0.107 | -0.008881 |
| 256-39 | 256-8 | 90-03-18 | 37-51-01 | 37.008 | 29.222 | 22.708 | -136937.746 | -72708.605 | 22.922 | 669.826684 |
| 256-8 | 256-31 | 90-13-35 | 308-04-36 | 0.135 | 0.083 | -0.107 | -136937.663 | -72708.712 | 45.523 | 3.778409 |
| 256-31 | 256-38 | 89-46-25 | 217-51-01 | 37.008 | -29.222 | -22.708 | -136966.885 | -72731.420 | 22.708 | -663.573176 |
| | | | | | | | | | 倍面積 | 10.023036 |
| | | | | | | | | | 面積 | 5.011518 |

<< H.5 高丘葵 地区 >>

| * * 面積計算 (倍横距法) * | | | | | * * ワーク名: 256BL-6 | | | | | |
|-------------------|--------|-----------|-----------|--------|-------------------|---------|-------------|------------|--------|-------------|
| 器械点 | 視準点 | 夾角 | 方向角 | 距離 | 緯距 | 経距 | X座標 | Y座標 | 倍横距 | 倍面積 |
| 256-8 | 256-43 | | 217-51-01 | | | | -136960.309 | -72726.138 | | |
| 256-43 | 256-28 | 90-04-48 | 127-55-49 | 29.954 | -18.413 | 23.627 | -136978.722 | -72702.511 | 23.627 | -435.043951 |
| 256-28 | 256-29 | 89-58-29 | 37-54-18 | 2.980 | 2.351 | 1.830 | -136976.371 | -72700.681 | 49.084 | 115.396484 |
| 256-29 | 256-44 | 90-01-31 | 307-55-49 | 17.497 | 10.756 | -13.801 | -136965.615 | -72714.482 | 37.113 | 399.187428 |
| 256-44 | 256-30 | 270-00-00 | 37-55-49 | 25.605 | 20.195 | 15.740 | -136945.420 | -72698.742 | 39.052 | 788.655140 |
| 256-30 | 256-8 | 89-57-15 | 307-53-04 | 12.496 | 7.674 | -9.863 | -136937.746 | -72708.605 | 44.929 | 344.785146 |
| 256-8 | 256-43 | 89-57-57 | 217-51-01 | 28.575 | -22.563 | -17.533 | -136960.309 | -72726.138 | 17.533 | -395.597079 |
| | | | | | | | | | 倍面積 | 817.383168 |
| | | | | | | | | | 面積 | 408.691584 |

<< H.5 高丘葵 地区 >>

| * * 面積計算 (倍横距法) * | | | | | * * ワーク名: 256BL-7 | | | | | |
|-------------------|--------|-----------|-----------|--------|-------------------|---------|-------------|------------|--------|-------------|
| 器械点 | 視準点 | 夾角 | 方向角 | 距離 | 緯距 | 経距 | X座標 | Y座標 | 倍横距 | 倍面積 |
| 256-30 | 256-44 | | 217-55-49 | | | | -136965.615 | -72714.482 | | |
| 256-44 | 256-29 | 90-00-00 | 127-55-49 | 17.497 | -10.756 | 13.801 | -136976.371 | -72700.681 | 13.801 | -148.443556 |
| 256-29 | 256-6 | 89-58-29 | 37-54-18 | 23.524 | 18.561 | 14.452 | -136957.810 | -72686.229 | 42.054 | 780.564294 |
| 256-6 | 256-7 | 134-53-36 | 352-47-54 | 2.967 | 2.944 | -0.372 | -136954.866 | -72686.601 | 56.134 | 165.258496 |
| 256-7 | 256-30 | 135-05-10 | 307-53-04 | 15.383 | 9.446 | -12.141 | -136945.420 | -72698.742 | 43.621 | 412.043966 |
| 256-30 | 256-44 | 90-02-45 | 217-55-49 | 25.605 | -20.195 | -15.740 | -136965.615 | -72714.482 | 15.740 | -317.869300 |
| | | | | | | | | | 倍面積 | 891.553900 |
| | | | | | | | | | 面積 | 445.776950 |

<< H.5 高丘葵 地区 >>

| * * 面積計算 (倍横距法) * | | | | | * * ワーク名: 256BL-8-1 | | | | | |
|-------------------|--------|-----------|-----------|--------|---------------------|---------|-------------|------------|--------|-------------|
| 器械点 | 視準点 | 夾角 | 方向角 | 距離 | 緯距 | 経距 | X座標 | Y座標 | 倍横距 | 倍面積 |
| 256-42 | 256-27 | | 217-52-54 | | | | -136992.101 | -72725.540 | | |
| 256-27 | 256-4 | 90-00-00 | 127-52-54 | 6.426 | -3.946 | 5.072 | -136996.047 | -72720.468 | 5.072 | -20.014112 |
| 256-4 | 256-5 | 134-53-48 | 82-46-42 | 4.996 | 0.628 | 4.956 | -136995.419 | -72715.512 | 15.100 | 9.482800 |
| 256-5 | 256-28 | 135-07-36 | 37-54-18 | 21.161 | 16.697 | 13.001 | -136978.722 | -72702.511 | 33.057 | 551.952729 |
| 256-28 | 256-43 | 90-01-31 | 307-55-49 | 29.954 | 18.413 | -23.627 | -136960.309 | -72726.138 | 22.431 | 413.022003 |
| 256-43 | 256-40 | 89-55-12 | 217-51-01 | 6.524 | -5.152 | -4.004 | -136965.461 | -72730.142 | -5.200 | 26.790400 |
| 256-40 | 256-42 | 90-04-48 | 127-55-49 | 19.990 | -12.288 | 15.768 | -136977.749 | -72714.374 | 6.564 | -80.658432 |
| 256-42 | 256-27 | 269-57-05 | 217-52-54 | 18.184 | -14.352 | -11.166 | -136992.101 | -72725.540 | 11.166 | -160.254432 |
| | | | | | | | | | 倍面積 | 740.320956 |
| | | | | | | | | | 面積 | 370.160478 |

<< H.5 高丘葵 地区 >>

| ※ ※ 面積計算 (倍横距法) ※ ※ | | | | | ワーク名: 256BL-8-2 | | | | | |
|---------------------|--------|-----------|-----------|--------|-----------------|---------|-------------|------------|--------|-------------|
| 器械点 | 視準点 | 夾角 | 方向角 | 距離 | 緯距 | 経距 | X座標 | Y座標 | 倍横距 | 倍面積 |
| 256-39 | 256-25 | | 217-53-33 | | | | -136979.825 | -72741.319 | | |
| 256-25 | 256-26 | 89-59-21 | 127-52-54 | 9.994 | -6.137 | 7.888 | -136985.962 | -72733.431 | 7.888 | -48.408656 |
| 256-26 | 256-41 | 90-00-00 | 37-52-54 | 18.193 | 14.359 | 11.171 | -136971.603 | -72722.260 | 26.947 | 386.931973 |
| 256-41 | 256-40 | 90-02-55 | 307-55-49 | 9.992 | 6.142 | -7.882 | -136965.461 | -72730.142 | 30.236 | 185.709512 |
| 256-40 | 256-39 | 89-55-12 | 217-51-01 | 1.909 | -1.507 | -1.171 | -136966.968 | -72731.313 | 21.183 | -31.922781 |
| 256-39 | 256-25 | 180-02-32 | 217-53-33 | 16.292 | -12.857 | -10.006 | -136979.825 | -72741.319 | 10.006 | -128.647142 |
| | | | | | | | | | 倍面積 | 363.662906 |
| | | | | | | | | | 面積 | 181.831453 |

<< H.5 高丘葵 地区 >>

| ※ ※ 面積計算 (倍横距法) ※ ※ | | | | | ワーク名: 256BL-8-3 | | | | | |
|---------------------|--------|----------|-----------|--------|-----------------|---------|-------------|------------|--------|-------------|
| 器械点 | 視準点 | 夾角 | 方向角 | 距離 | 緯距 | 経距 | X座標 | Y座標 | 倍横距 | 倍面積 |
| 256-41 | 256-26 | | 217-52-54 | | | | -136985.962 | -72733.431 | | |
| 256-26 | 256-27 | 90-00-00 | 127-52-54 | 9.997 | -6.139 | 7.891 | -136992.101 | -72725.540 | 7.891 | -48.442849 |
| 256-27 | 256-42 | 90-00-00 | 37-52-54 | 18.184 | 14.352 | 11.166 | -136977.749 | -72714.374 | 26.948 | 386.757696 |
| 256-42 | 256-41 | 90-02-55 | 307-55-49 | 9.997 | 6.146 | -7.886 | -136971.603 | -72722.260 | 30.228 | 185.781288 |
| 256-41 | 256-26 | 89-57-05 | 217-52-54 | 18.193 | -14.359 | -11.171 | -136985.962 | -72733.431 | 11.171 | -160.404389 |
| | | | | | | | | | 倍面積 | 363.691746 |
| | | | | | | | | | 面積 | 181.845873 |

<< H.5 高丘葵 地区 >>

| * * 面積計算 (倍横距法) * | | | | | ワーク名: 256BL-9 | | | | | |
|-------------------|--------|----------|-----------|--------|---------------|---------|-------------|------------|--------|-------------|
| 器械点 | 視準点 | 夾角 | 方向角 | 距離 | 緯距 | 経距 | X座標 | Y座標 | 倍横距 | 倍面積 |
| 256-36 | 256-24 | | 217-52-23 | | | | -136970.779 | -72752.947 | | |
| 256-24 | 256-25 | 90-00-31 | 127-52-54 | 14.732 | -9.046 | 11.628 | -136979.825 | -72741.319 | 11.628 | -105.186888 |
| 256-25 | 256-39 | 90-00-39 | 37-53-33 | 16.292 | 12.857 | 10.006 | -136966.968 | -72731.313 | 33.262 | 427.649534 |
| 256-39 | 256-36 | 89-54-10 | 307-47-43 | 14.738 | 9.032 | -11.646 | -136957.936 | -72742.959 | 31.622 | 285.609904 |
| 256-36 | 256-24 | 90-04-40 | 217-52-23 | 16.270 | -12.843 | -9.988 | -136970.779 | -72752.947 | 9.988 | -128.275884 |
| | | | | | | | | | 倍面積 | 479.796666 |
| | | | | | | | | | 面積 | 239.898333 |