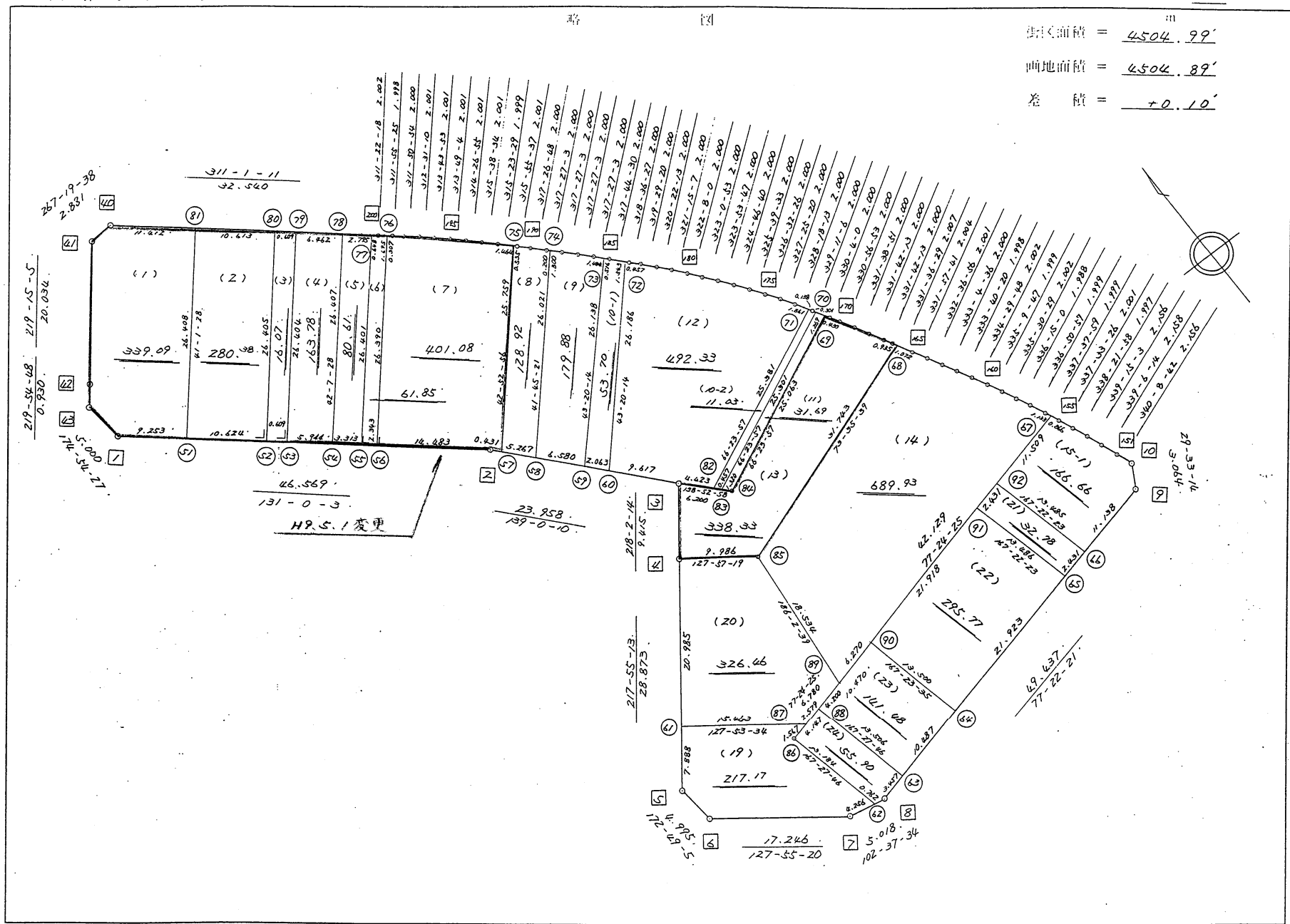


葵東3-102

不二綜合コンサルタント株式会社

街区点番号 1 ~ 43
 151 ~ 200
 境界点番号 57 ~ 103
 画地番号 (1) ~ (24)

原面積 = $4504.99'$
 商地面積 = $4504.89'$
 差 積 = $+0.10'$

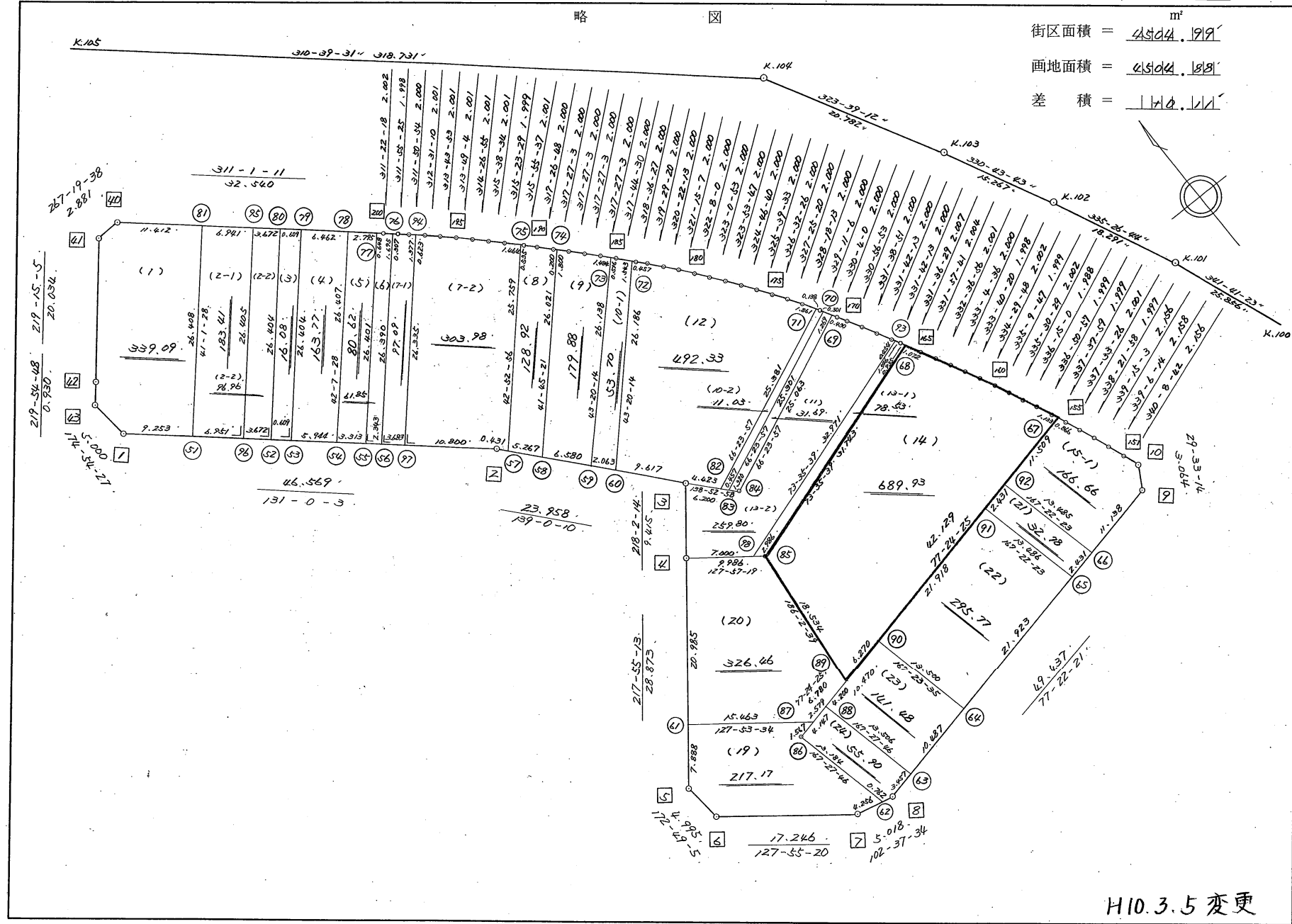


不二綜合ビル株式会社

街区点番号 $1 \sim 43$
 境界点番号 $(51) \sim (92)$ 商地番号 $(1) \sim (24)$
 $151 \sim 200$

略

街区面積 = 4544.199 m²
 画地面積 = 4544.199
 差積 = 144.14



不二輪合口口サタル下株式会社

H10.3.5 変更

街区点番号 1 ~ 43
 筆界点番号 51 ~ 98
 画地番号 (1) ~ (24)

街区計算書

(街区面積計算)

495

街区名: 957

点名	点名	内角	方向角	辺長	d x	*	d y	*	X	Y	DMD	2 A
957-43	957-1		174-54-27						-137249.207	-71173.820		
957-1	957-2	136-05-36	131-00-03	46.569	-30.553	1	35.146	0	-137279.759	-71138.674	35.146	-1073.780592
957-2	957-3	188-00-07	139-00-10	23.958	-18.082	0	15.717	0	-137297.841	-71122.957	86.009	-1555.214738
957-3	957-4	259-02-04	218-02-14	9.415	-7.415	-1	-5.801	0	-137305.257	-71128.758	95.925	-711.379800
957-4	957-5	179-52-59	217-55-13	28.873	-22.777	1	-17.744	0	-137328.033	-71146.502	72.380	-1648.526880
957-5	957-6	134-53-52	172-49-05	4.995	-4.956	0	0.624	0	-137332.989	-71145.878	55.260	-273.868560
957-6	957-7	135-06-15	127-55-20	17.246	-10.599	0	13.604	0	-137343.588	-71132.274	69.488	-736.503312
957-7	957-8	154-42-14	102-37-34	5.018	-1.097	0	4.897	0	-137344.685	-71127.377	87.989	-96.523933
957-8	957-9	154-44-47	77-22-21	49.437	10.808	-1	48.241	0	-137333.878	-71079.136	141.127	1525.159489
957-9	957-10	132-10-53	29-33-14	3.064	2.665	1	1.511	1	-137331.212	-71077.624	190.880	508.886080
957-10	957-151	130-35-28	340-08-42	2.156	2.028	0	-0.732	0	-137329.184	-71078.356	191.660	388.686480
957-151	957-152	178-57-32	339-06-14	2.158	2.016	0	-0.770	0	-137327.168	-71079.126	190.158	383.358528
957-152	957-153	180-08-49	339-15-03	2.156	2.016	1	-0.764	0	-137325.151	-71079.890	188.624	380.454608
957-153	957-154	179-06-55	338-21-58	1.997	1.856	0	-0.736	-1	-137323.295	-71080.627	187.123	347.300288
957-154	957-155	179-11-28	337-33-26	2.001	1.849	1	-0.764	0	-137321.445	-71081.391	185.622	343.400700
957-155	957-156	180-04-33	337-37-59	1.999	1.849	-1	-0.761	1	-137319.597	-71082.151	184.098	340.213104
957-156	957-157	179-12-58	336-50-57	1.999	1.838	0	-0.786	0	-137317.759	-71082.937	182.552	335.530576
957-157	957-158	179-24-03	336-15-00	1.988	1.820	-1	-0.801	1	-137315.940	-71083.737	180.966	329.177154
957-158	957-159	179-15-29	335-30-29	2.002	1.822	1	-0.830	-1	-137314.117	-71084.568	179.335	326.927705
957-159	957-160	179-39-18	335-09-47	1.999	1.814	0	-0.840	1	-137312.303	-71085.407	177.665	322.284310
957-160	957-161	179-20-01	334-29-48	2.002	1.807	0	-0.862	-1	-137310.496	-71086.270	175.963	317.965141
957-161	957-162	179-10-32	333-40-20	1.998	1.791	0	-0.886	0	-137308.705	-71087.156	174.214	312.017274
957-162	957-163	179-24-16	333-04-36	2.000	1.783	1	-0.906	1	-137306.921	-71088.061	172.423	307.602632

街区計算書

点名	点名	内角	方向角	辺長	d x	*	d y	*	X	Y	DMD	2 A
957-163	957-164	179-32-20	332-36-56	2.001	1.777	-1	-0.920	-1	-137305.145	-71088.982	170.597	302.980272
957-164	957-165	179-20-45	331-57-41	2.004	1.769	0	-0.942	0	-137303.376	-71089.924	168.734	298.490446
957-165	957-166	179-38-48	331-36-29	2.007	1.766	-1	-0.954	0	-137301.611	-71090.878	166.838	294.469070
957-166	957-167	180-05-44	331-42-13	2.000	1.761	0	-0.948	0	-137299.850	-71091.826	164.936	290.452296
957-167	957-168	180-00-00	331-42-13	2.000	1.761	0	-0.948	0	-137298.089	-71092.774	163.040	287.113440
957-168	957-169	179-56-38	331-38-51	2.000	1.760	0	-0.950	0	-137296.329	-71093.724	161.142	283.609920
957-169	957-170	179-18-02	330-56-53	2.000	1.748	0	-0.971	0	-137294.581	-71094.695	159.221	278.318308
957-170	957-171	179-07-07	330-04-00	2.000	1.733	1	-0.998	0	-137292.847	-71095.693	157.252	272.674968
957-171	957-172	179-07-06	329-11-06	2.000	1.718	-1	-1.025	1	-137291.130	-71096.717	155.230	266.529910
957-172	957-173	179-07-07	328-18-13	2.000	1.702	0	-1.051	0	-137289.428	-71097.768	153.155	260.669810
957-173	957-174	179-07-07	327-25-20	2.000	1.685	0	-1.077	0	-137287.743	-71098.845	151.027	254.480495
957-174	957-175	179-07-06	326-32-26	2.000	1.669	0	-1.103	0	-137286.074	-71099.948	148.847	248.425643
957-175	957-176	179-07-07	325-39-33	2.000	1.651	0	-1.128	0	-137284.423	-71101.076	146.616	242.063016
957-176	957-177	179-07-07	324-46-40	2.000	1.634	0	-1.153	0	-137282.789	-71102.229	144.335	235.843390
957-177	957-178	179-07-07	323-53-47	2.000	1.616	0	-1.178	-1	-137281.173	-71103.408	142.003	229.476848
957-178	957-179	179-07-06	323-00-53	2.000	1.598	-1	-1.203	0	-137279.576	-71104.611	139.621	222.974737
957-179	957-180	179-07-07	322-08-00	2.000	1.579	0	-1.228	0	-137277.997	-71105.839	137.190	216.623010
957-180	957-181	179-07-07	321-15-07	2.000	1.560	0	-1.252	0	-137276.437	-71107.091	134.710	210.147600
957-181	957-182	179-07-06	320-22-13	2.000	1.540	0	-1.276	1	-137274.897	-71108.366	132.183	203.561820
957-182	957-183	179-07-07	319-29-20	2.000	1.521	0	-1.299	0	-137273.376	-71109.665	129.609	197.135289
957-183	957-184	179-07-07	318-36-27	2.000	1.500	0	-1.322	-1	-137271.876	-71110.988	126.987	190.480500
957-184	957-185	179-08-03	317-44-30	2.000	1.480	1	-1.345	0	-137270.395	-71112.333	124.319	184.116439

街区計算書

点名	点名	内角	方向角	辺長	dx	*	dy	*	X	Y	DMD	2A
957-185	957-186	179-42-33	317-27-03	2.000	1.473	0	-1.352	0	-137268.922	-71113.685	121.622	179.149206
957-186	957-187	180-00-00	317-27-03	2.000	1.473	0	-1.352	-1	-137267.449	-71115.038	118.917	175.164741
957-187	957-188	180-00-00	317-27-03	2.000	1.473	1	-1.352	0	-137265.975	-71116.390	116.212	171.296488
957-188	957-189	180-00-00	317-27-03	2.000	1.473	0	-1.352	0	-137264.502	-71117.742	113.508	167.197284
957-189	957-190	179-59-45	317-26-48	2.000	1.473	0	-1.353	0	-137263.029	-71119.095	110.803	163.212819
957-190	957-191	178-28-49	315-55-37	2.001	1.438	0	-1.392	0	-137261.591	-71120.487	108.058	155.387404
957-191	957-192	179-27-52	315-23-29	1.999	1.423	0	-1.404	0	-137260.168	-71121.891	105.262	149.787826
957-192	957-193	180-15-05	315-38-34	2.001	1.431	0	-1.399	0	-137258.737	-71123.290	102.459	146.618829
957-193	957-194	178-48-21	314-26-55	2.001	1.401	0	-1.428	0	-137257.336	-71124.718	99.632	139.584432
957-194	957-195	179-22-09	313-49-04	2.001	1.385	1	-1.444	0	-137255.950	-71126.162	96.760	134.109360
957-195	957-196	179-54-49	313-43-53	2.001	1.383	0	-1.446	0	-137254.567	-71127.608	93.870	129.822210
957-196	957-197	178-47-17	312-31-10	2.001	1.352	1	-1.475	0	-137253.214	-71129.083	90.949	123.053997
957-197	957-198	179-19-44	311-50-54	2.000	1.334	0	-1.490	0	-137251.880	-71130.573	87.984	117.370656
957-198	957-199	180-04-31	311-55-25	1.998	1.335	0	-1.487	0	-137250.545	-71132.060	85.007	113.484345
957-199	957-200	179-26-53	311-22-18	2.002	1.323	1	-1.502	-1	-137249.221	-71133.563	82.017	108.590508
957-200	957-40	179-38-53	311-01-11	32.540	21.357	-1	-24.551	1	-137227.865	-71158.113	55.964	1195.167184
957-40	957-41	136-18-27	267-19-38	2.881	-0.134	0	-2.878	0	-137227.999	-71160.991	28.536	-3.823824
957-41	957-42	131-55-27	219-15-05	20.034	-15.514	0	-12.676	0	-137243.513	-71173.667	12.982	-201.402748
957-42	957-43	180-39-43	219-54-48	0.930	-0.713	-1	-0.597	0	-137244.227	-71174.264	-0.291	0.207774
957-43	957-1	134-59-39	174-54-27	5.000	-4.980	0	0.444	0	-137249.207	-71173.820	-0.444	2.211120
合計	測角数 = 64	11160-00-00		350.432	-0.003	3	0.000	0			倍面積	9009.993092
											面積	4504.9965460

座標面積計算書 (倍横距法)

489 [街区名 : 957]
 [地番 : 957 (1)]

点名	点名	内角	方向角	辺長	dx	*	dy	*	X	Y	DMD	2A
957-81	957-40		311-01-11						-137227.865	-71158.113		
957-40	957-41	136-18-27	267-19-38	2.881	-0.134	0	-2.878	0	-137227.999	-71160.991	-2.878	0.385652
957-41	957-42	131-55-27	219-15-05	20.034	-15.514	0	-12.676	0	-137243.513	-71173.667	-18.432	285.954048
957-42	957-43	180-39-43	219-54-48	0.930	-0.713	-1	-0.597	0	-137244.227	-71174.264	-31.705	22.637370
957-43	957-1	134-59-39	174-54-27	5.000	-4.980	0	0.444	0	-137249.207	-71173.820	-31.858	158.652840
957-1	957-51	136-05-36	131-00-03	9.253	-6.071	0	6.983	1	-137255.278	-71166.836	-24.430	148.314530
957-51	957-81	90-01-25	41-01-28	26.408	19.923	0	17.334	-1	-137235.355	-71149.503	-0.113	-2.251299
957-81	957-40	89-59-43	311-01-11	11.412	7.490	0	-8.610	0	-137227.865	-71158.113	8.610	64.488900
合計	測角数 = 7	900-00-00		75.918	0.001	-1	0.000	0			倍面積	678.182041
											面積	339.0910205
											地積	339.09

座標面積計算書 (倍横距法)

489 [街区名: 957]
 [地番 : 957(2-1)]

点名	点名	内角	方向角	辺長	dx	*	dy	*	X	Y	DMD	2A
957-95	957-81		311-01-11						-137235.355	-71149.503		
957-81	957-51	90-00-17	221-01-28	26.408	-19.923	0	-17.334	1	-137255.278	-71166.836	-17.333	345.325359
957-51	957-96	89-58-35	131-00-03	6.951	-4.560	0	5.246	0	-137259.838	-71161.590	-29.420	134.155200
957-96	957-95	90-00-00	41-00-03	26.405	19.928	0	17.324	0	-137239.910	-71144.266	-6.850	-136.506800
957-95	957-81	90-01-08	311-01-11	6.941	4.556	-1	-5.237	0	-137235.355	-71149.503	5.237	23.854535
合計	測角数 = 4	360-00-00		66.705	0.001	-1	-0.001	1			倍面積	366.828294
											面積	183.4141470
											地積	183.41

489 [街区名: 957]
 [地番 : 957(2-2)]

点名	点名	内角	方向角	辺長	dx	*	dy	*	X	Y	DMD	2A
957-96	957-52		131-00-03						-137262.248	-71158.819		
957-52	957-80	90-00-00	41-00-03	26.404	19.927	1	17.323	0	-137242.320	-71141.496	17.323	345.212744
957-80	957-95	90-01-08	311-01-11	3.672	2.410	0	-2.770	0	-137239.910	-71144.266	31.876	76.821160
957-95	957-96	89-58-52	221-00-03	26.405	-19.928	0	-17.324	0	-137259.838	-71161.590	11.782	-234.791696
957-96	957-52	90-00-00	131-00-03	3.672	-2.409	-1	2.771	0	-137262.248	-71158.819	-2.771	6.678110
合計	測角数 = 4	360-00-00		60.153	0.000	0	0.000	0			倍面積	193.920318
											面積	96.9601590
											地積	96.96

座標面積計算書 (倍横距法)

489 [街区名 : 957]
 [地番 : 957(3)]

点名	点名	内角	方向角	辺長	dx	*	dy	*	X	Y	DMD	2A
957-79	957-80		311-01-11						-137242.320	-71141.496		
957-80	957-52	89-58-52	221-00-03	26.404	-19.927	-1	-17.323	0	-137262.248	-71158.819	-17.323	345.212744
957-52	957-53	90-00-00	131-00-03	0.609	-0.400	1	0.460	0	-137262.647	-71158.359	-34.186	13.640214
957-53	957-79	90-00-00	41-00-03	26.404	19.927	0	17.323	0	-137242.720	-71141.036	-16.403	-326.862581
957-79	957-80	90-01-08	311-01-11	0.609	0.400	0	-0.459	-1	-137242.320	-71141.496	0.460	0.184000
合計	測角数 = 4	360-00-00		54.026	0.000	0	0.001	-1			倍面積	32.174377
											面積	16.0871885
											地積	16.08

座標面積計算書 (倍横距法)

489 [街区名 : 957]
 [地番 : 957(4)]

点名	点名	内角	方向角	辺長	dx	*	dy	*	X	Y	DMD	2A
957-78	957-79		311-01-11						-137242.720	-71141.036		
957-79	957-53	89-58-52	221-00-03	26.404	-19.927	0	-17.323	0	-137262.647	-71158.359	-17.323	345.195421
957-53	957-54	90-00-00	131-00-03	5.944	-3.900	0	4.486	0	-137266.547	-71153.873	-30.160	117.624000
957-54	957-78	91-07-25	42-07-28	26.407	19.586	0	17.712	0	-137246.961	-71136.161	-7.962	-155.943732
957-78	957-79	88-53-43	311-01-11	6.462	4.241	0	-4.875	0	-137242.720	-71141.036	4.875	20.674875
合計	測角数 = 4	360-00-00		65.217	0.000	0	0.000	0			倍面積	327.550564
											面積	163.7752820
											地積	163.77

489 [街区名 : 957]
 [地番 : 957(5)]

点名	点名	内角	方向角	辺長	dx	*	dy	*	X	Y	DMD	2A
957-77	957-78		311-01-11						-137246.961	-71136.161		
957-78	957-54	91-06-17	222-07-28	26.407	-19.586	0	-17.712	0	-137266.547	-71153.873	-17.712	346.907232
957-54	957-55	88-52-35	131-00-03	3.313	-2.174	1	2.500	0	-137268.720	-71151.373	-32.924	71.543852
957-55	957-77	90-00-00	41-00-03	26.401	19.925	-1	17.321	0	-137248.796	-71134.052	-13.103	-261.064172
957-77	957-78	90-01-08	311-01-11	2.795	1.834	1	-2.109	0	-137246.961	-71136.161	2.109	3.870015
合計	測角数 = 4	360-00-00		58.916	-0.001	1	0.000	0			倍面積	161.256927
											面積	80.6284635
											地積	80.62

座標面積計算書 (倍横距法)

489 [街区名: 957]
 [地番 : 957(6)]

点名	点名	内角	方向角	辺長	dx	*	dy	*	X	Y	DMD	2A
957-76	957-200		311-22-18						-137249.221	-71133.563		
957-200	957-77	179-38-53	311-01-11	0.648	0.425	0	-0.489	0	-137248.796	-71134.052	-0.489	-0.207825
957-77	957-55	89-58-52	221-00-03	26.401	-19.925	1	-17.321	0	-137268.720	-71151.373	-18.299	364.589276
957-55	957-56	90-00-00	131-00-03	2.343	-1.537	-1	1.768	1	-137270.258	-71149.604	-33.851	52.062838
957-56	957-76	90-00-00	41-00-03	26.390	19.917	0	17.314	-1	-137250.341	-71132.291	-14.769	-294.154173
957-76	957-200	90-22-15	311-22-18	1.695	1.120	0	-1.272	0	-137249.221	-71133.563	1.272	1.424640
合計	測角数 = 5	540-00-00		57.477	0.000	0	0.000	0			倍面積	123.714756
											面積	61.8573780
											地積	61.85

座標面積計算書 (倍横距法)

489 [街区名: 957]
 [地番 : 957(7-1)]

点名	点名	内角	方向角	辺長	dx	*	dy	*	X	Y	DMD	2A
957-94	957-198		311-50-54						-137251.880	-71130.573		
957-198	957-199	180-04-31	311-55-25	1.998	1.335	0	-1.487	0	-137250.545	-71132.060	-1.487	-1.985145
957-199	957-76	179-26-53	311-22-18	0.307	0.203	1	-0.230	-1	-137250.341	-71132.291	-3.205	-0.653820
957-76	957-56	89-37-45	221-00-03	26.390	-19.917	0	-17.314	1	-137270.258	-71149.604	-20.749	413.257833
957-56	957-97	90-00-00	131-00-03	3.683	-2.416	0	2.780	-1	-137272.674	-71146.825	-35.283	85.243728
957-97	957-94	90-00-00	41-00-03	26.335	19.875	0	17.278	0	-137252.799	-71129.547	-15.226	-302.616750
957-94	957-198	90-50-51	311-50-54	1.377	0.919	0	-1.026	0	-137251.880	-71130.573	1.026	0.942894
合計	測角数 = 6	720-00-00		60.090	-0.001	1	0.001	-1			倍面積	194.188740
											面積	97.0943700
											地積	97.09

座標面積計算書 (倍横距法)

489 [街区名 : 957]
 [地番 : 957 (7-2)]

点名	点名	内角	方向角	辺長	dx	*	dy	*	X	Y	DMD	2A
957-75	957-192		315-23-29						-137260.168	-71121.891		
957-192	957-193	180-15-05	315-38-34	2.001	1.431	0	-1.399	0	-137258.737	-71123.290	-1.399	-2.001969
957-193	957-194	178-48-21	314-26-55	2.001	1.401	0	-1.428	0	-137257.336	-71124.718	-4.226	-5.920626
957-194	957-195	179-22-09	313-49-04	2.001	1.385	1	-1.444	0	-137255.950	-71126.162	-7.098	-9.837828
957-195	957-196	179-54-49	313-43-53	2.001	1.383	0	-1.446	0	-137254.567	-71127.608	-9.988	-13.813404
957-196	957-197	178-47-17	312-31-10	2.001	1.352	1	-1.475	0	-137253.214	-71129.083	-12.909	-17.465877
957-197	957-94	179-19-44	311-50-54	0.623	0.416	-1	-0.464	0	-137252.799	-71129.547	-14.848	-6.161920
957-94	957-97	89-09-09	221-00-03	26.335	-19.875	0	-17.278	0	-137272.674	-71146.825	-32.590	647.726250
957-97	957-2	90-00-00	131-00-03	10.800	-7.086	1	8.151	0	-137279.759	-71138.674	-41.717	295.564945
957-2	957-57	188-00-07	139-00-10	0.431	-0.325	-1	0.283	0	-137280.085	-71138.391	-33.283	10.850258
957-57	957-75	83-52-46	42-52-56	25.759	18.875	0	17.529	-1	-137261.210	-71120.863	-15.472	-292.034000
957-75	957-192	92-30-33	315-23-29	1.464	1.042	0	-1.028	0	-137260.168	-71121.891	1.028	1.071176
合計	測角数 = 11	1620-00-00		75.417	-0.001	1	0.001	-1			倍面積	607.977005
											面積	303.9885025
											地積	303.98

座標面積計算書 (倍横距法)

495 [街区名 : 957]
 [地番 : 957(7)]

点名	点名	内角	方向角	辺長	dx	*	dy	*	X	Y	DMD	2A
957-75	957-192		315-23-29						-137260.168	-71121.891		
957-192	957-193	180-15-05	315-38-34	2.001	1.431	0	-1.399	0	-137258.737	-71123.290	-1.399	-2.001969
957-193	957-194	178-48-21	314-26-55	2.001	1.401	0	-1.428	0	-137257.336	-71124.718	-4.226	-5.920626
957-194	957-195	179-22-09	313-49-04	2.001	1.385	1	-1.444	0	-137255.950	-71126.162	-7.098	-9.837828
957-195	957-196	179-54-49	313-43-53	2.001	1.383	0	-1.446	0	-137254.567	-71127.608	-9.988	-13.813404
957-196	957-197	178-47-17	312-31-10	2.001	1.352	1	-1.475	0	-137253.214	-71129.083	-12.909	-17.465877
957-197	957-198	179-19-44	311-50-54	2.000	1.334	0	-1.490	0	-137251.880	-71130.573	-15.874	-21.175916
957-198	957-199	180-04-31	311-55-25	1.998	1.335	0	-1.487	0	-137250.545	-71132.060	-18.851	-25.166085
957-199	957-76	179-26-53	311-22-18	0.307	0.203	1	-0.230	-1	-137250.341	-71132.291	-20.569	-4.196076
957-76	957-56	89-37-45	221-00-03	26.390	-19.917	0	-17.314	1	-137270.258	-71149.604	-38.113	759.096621
957-56	957-2	90-00-00	131-00-03	14.483	-9.502	1	10.930	0	-137279.759	-71138.674	-44.496	422.756496
957-2	957-57	188-00-07	139-00-10	0.431	-0.325	-1	0.283	0	-137280.085	-71138.391	-33.283	10.850258
957-57	957-75	83-52-46	42-52-56	25.759	18.875	0	17.529	-1	-137261.210	-71126.863	-15.472	-292.034000
957-75	957-192	92-30-33	315-23-29	1.464	1.042	0	-1.028	0	-137260.168	-71121.891	1.028	1.071176
合計	測角数 = 13	1980-00-00		82.837	-0.003	3	0.001	-1			倍面積	802.162770
											面積	401.0813850
											地積	401.08

座標面積計算書 (倍横距法)

495 [街区名 : 957]
 [地番 : 957(8)]

点名	点名	内角	方向角	辺長	dx	*	dy	*	X	Y	DMD	2A
957-74	957-189		317-27-03						-137264.502	-71117.742		
957-189	957-190	179-59-45	317-26-48	2.000	1.473	0	-1.353	0	-137263.029	-71119.095	-1.353	-1.992969
957-190	957-191	178-28-49	315-55-37	2.001	1.438	0	-1.392	0	-137261.591	-71120.487	-4.098	-5.892924
957-191	957-75	179-27-52	315-23-29	0.535	0.381	0	-0.376	0	-137261.210	-71120.863	-5.866	-2.234946
957-75	957-57	87-29-27	222-52-56	25.759	-18.875	0	-17.529	1	-137280.085	-71138.391	-23.770	448.658750
957-57	957-58	96-07-14	139-00-10	5.267	-3.975	0	3.455	0	-137284.060	-71134.936	-37.843	150.425925
957-58	957-74	82-45-11	41-45-21	26.021	19.411	0	17.329	0	-137264.649	-71117.607	-17.059	-331.132249
957-74	957-189	95-41-42	317-27-03	0.200	0.147	0	-0.135	0	-137264.502	-71117.742	0.135	0.019845
合計	測角数 = 7	900-00-00		61.783	0.000	0	-0.001	1			倍面積	257.851432
											面積	128.9257160
											地積	128.92

座標面積計算書 (倍横距法)

495 [街区名 : 957]
 [地番 : 957 (9)]

点名	点名	内角	方向角	辺長	dx	*	dy	*	X	Y	DMD	2A
957-73	957-186		317-27-03						-137268.922	-71113.685		
957-186	957-187	180-00-00	317-27-03	2.000	1.473	0	-1.352	-1	-137267.449	-71115.038	-1.353	-1.992969
957-187	957-188	180-00-00	317-27-03	2.000	1.473	1	-1.352	0	-137265.975	-71116.390	-4.058	-5.981492
957-188	957-74	180-00-00	317-27-03	1.800	1.326	0	-1.217	0	-137264.649	-71117.607	-6.627	-8.787402
957-74	957-58	84-18-18	221-45-21	26.021	-19.411	0	-17.329	0	-137284.060	-71134.936	-25.173	488.633103
957-58	957-59	97-14-49	139-00-10	6.580	-4.966	0	4.317	0	-137289.026	-71130.619	-38.185	189.626710
957-59	957-73	84-20-04	43-20-14	26.138	19.011	-1	17.938	0	-137270.016	-71112.681	-15.930	-302.829300
957-73	957-186	94-06-49	317-27-03	1.484	1.093	1	-1.004	0	-137268.922	-71113.685	1.004	1.098376
合計	測角数 = 7	900-00-00		66.023	-0.001	1	0.001	-1			倍面積	359.767026
											面積	179.8835130
											地積	179.88

座標面積計算書 (倍横距法)

495 [街区名 : 957]
 [地番 : 957(10-1)]

点名	点名	内角	方向角	辺長	d x	*	d y	*	X	Y	DMD	2 A
957-72	957-185		317-44-30						-137270.395	-71112.333		
957-185	957-73	179-42-33	317-27-03	0.516	0.380	-1	-0.349	1	-137270.016	-71112.681	-0.348	-0.131892
957-73	957-59	85-53-11	223-20-14	26.138	-19.011	1	-17.938	0	-137289.026	-71130.619	-18.634	354.232340
957-59	957-60	95-39-56	139-00-10	2.063	-1.557	0	1.353	0	-137290.583	-71129.266	-35.219	54.835983
957-60	957-72	84-20-04	43-20-14	26.186	19.046	-1	17.971	0	-137271.538	-71111.295	-15.895	-302.720275
957-72	957-185	94-24-16	317-44-30	1.543	1.142	1	-1.038	0	-137270.395	-71112.333	1.038	1.186434
合計	測角数 = 5	540-00-00		56.446	0.000	0	-0.001	1			倍面積	107.402590
											面積	53.7012950
											地積	53.70

座標面積計算書 (倍横距法)

495 [街区名 : 957]
 [地番 : 957 (10-2)]

点名	点名	内角	方向角	辺長	d x	*	d y	*	X	Y	DMD	2 A
957-70	957-172		329-11-06						-137291.130	-71096.717		
957-172	957-71	179-07-07	328-18-13	0.138	0.117	1	-0.073	0	-137291.012	-71096.790	-0.073	-0.008614
957-71	957-82	98-05-44	246-23-57	25.381	-10.162	0	-23.258	-1	-137301.174	-71120.049	-23.405	237.841610
957-82	957-83	72-29-01	138-52-58	0.457	-0.344	0	0.301	0	-137301.518	-71119.748	-46.363	15.948872
957-83	957-70	107-30-59	66-23-57	25.301	10.130	0	23.185	0	-137291.388	-71096.563	-22.877	-231.744010
957-70	957-172	82-47-09	329-11-06	0.301	0.259	-1	-0.154	0	-137291.130	-71096.717	0.154	0.039732
合計	測角数 = 5	540-00-00		51.578	0.000	0	0.001	-1			倍面積	22.077590
											面積	11.0387950
											地積	11.03

座標面積計算書 (倍横距法)

495 [街区名 : 957]
 [地番 : 957(11)]

点名	点名	内角	方向角	辺長	dx	*	dy	*	X	Y	DMD	2A
957-83	957-84		138-52-58						-137302.512	-71118.880		
957-84	957-69	107-30-59	66-23-57	25.063	10.034	0	22.967	0	-137292.478	-71095.913	22.967	230.450878
957-69	957-70	82-47-09	329-11-06	1.269	1.090	0	-0.650	0	-137291.388	-71096.563	45.284	49.359560
957-70	957-83	97-12-51	246-23-57	25.301	-10.130	0	-23.185	0	-137301.518	-71119.748	21.449	-217.278370
957-83	957-84	72-29-01	138-52-58	1.320	-0.994	0	0.868	0	-137302.512	-71118.880	-0.868	0.862792
合計	測角数 = 4	360-00-00		52.953	0.000	0	0.000	0			倍面積	63.394860
											面積	31.6974300
											地積	31.69

座標面積計算書 (倍横距法)

495 [街区名 : 957]
 [地番 : 957(12)]

点名	点名	内角	方向角	辺長	d x	*	d y	*	X	Y	DMD	2 A
957-71	957-173		328-18-13						-137289.428	-71097.768		
957-173	957-174	179-07-07	327-25-20	2.000	1.685	0	-1.077	0	-137287.743	-71098.845	-1.077	-1.814745
957-174	957-175	179-07-06	326-32-26	2.000	1.669	0	-1.103	0	-137286.074	-71099.948	-3.257	-5.435933
957-175	957-176	179-07-07	325-39-33	2.000	1.651	0	-1.128	0	-137284.423	-71101.076	-5.488	-9.060688
957-176	957-177	179-07-07	324-46-40	2.000	1.634	0	-1.153	0	-137282.789	-71102.229	-7.769	-12.694546
957-177	957-178	179-07-07	323-53-47	2.000	1.616	0	-1.178	-1	-137281.173	-71103.408	-10.101	-16.323216
957-178	957-179	179-07-06	323-00-53	2.000	1.598	-1	-1.203	0	-137279.576	-71104.611	-12.483	-19.935351
957-179	957-180	179-07-07	322-08-00	2.000	1.579	0	-1.228	0	-137277.997	-71105.839	-14.914	-23.549206
957-180	957-181	179-07-07	321-15-07	2.000	1.560	0	-1.252	0	-137276.437	-71107.091	-17.394	-27.134640
957-181	957-182	179-07-06	320-22-13	2.000	1.540	0	-1.276	1	-137274.897	-71108.366	-19.921	-30.678340
957-182	957-183	179-07-07	319-29-20	2.000	1.521	0	-1.299	0	-137273.376	-71109.665	-22.495	-34.214895
957-183	957-184	179-07-07	318-36-27	2.000	1.500	0	-1.322	-1	-137271.876	-71110.988	-25.117	-37.675500
957-184	957-72	179-08-03	317-44-30	0.457	0.338	0	-0.307	0	-137271.538	-71111.295	-26.747	-9.040486
957-72	957-60	85-35-44	223-20-14	26.186	-19.046	1	-17.971	0	-137290.583	-71129.266	-45.025	857.501125
957-60	957-3	95-39-56	139-00-10	9.617	-7.258	0	6.309	0	-137297.841	-71122.957	-56.687	411.434246
957-3	957-82	179-52-48	138-52-58	4.423	-3.332	-1	2.909	-1	-137301.174	-71120.049	-47.470	158.217510
957-82	957-71	107-30-59	66-23-57	25.381	10.162	0	23.258	1	-137291.012	-71096.790	-21.303	-216.481086
957-71	957-173	81-54-16	328-18-13	1.861	1.583	1	-0.978	0	-137289.428	-71097.768	0.978	1.549152
合計	測角数 = 17	2700-00-00		89.925	0.000	0	0.001	-1			倍面積	984.663401
											面積	492.3317005
											地積	492.33

座標面積計算書 (倍横距法)

489 [街区名:957]
 [地番 :957(13-1)]

点名	点名	内角	方向角	辺長	d x	*	d y	*	X	Y	DMD	2 A
957-85	957-68		73-35-39						-137302.433	-71090.433		
957-68	957-166	78-00-50	331-36-29	0.935	0.823	-1	-0.445	0	-137301.611	-71090.878	-0.445	-0.365790
957-166	957-93	180-05-44	331-42-13	1.546	1.361	0	-0.733	0	-137300.250	-71091.611	-1.623	-2.208903
957-93	957-98	101-53-26	253-35-39	32.971	-9.312	0	-31.629	1	-137309.562	-71123.239	-33.984	316.459008
957-98	957-85	54-21-40	127-57-19	2.986	-1.837	0	2.354	1	-137311.399	-71120.884	-63.257	116.203109
957-85	957-68	125-38-20	73-35-39	31.743	8.965	1	30.451	0	-137302.433	-71090.433	-30.451	-273.023666
合計	測角数 = 5	540-00-00		70.181	0.000	0	-0.002	2			倍面積	157.063758
											面積	78.5318790
											地積	78.53

座標面積計算書 (倍横距法)

489 [街区名 : 957]
 [地番 : 957(13-2)]

点名	点名	内角	方向角	辺長	d x	*	d y	*	X	Y	DMD	2 A
957-84	957-3		318-52-58						-137297.841	-71122.957		
957-3	957-4	79-09-16	218-02-14	9.415	-7.415	-1	-5.801	0	-137305.257	-71128.758	-5.801	43.020216
957-4	957-98	89-55-05	127-57-19	7.000	-4.305	0	5.519	0	-137309.562	-71123.239	-6.083	26.187315
957-98	957-93	125-38-20	73-35-39	32.971	9.312	0	31.629	-1	-137300.250	-71091.611	31.064	289.267968
957-93	957-167	78-06-34	331-42-13	0.454	0.400	0	-0.215	0	-137299.850	-71091.826	62.477	24.990800
957-167	957-168	180-00-00	331-42-13	2.000	1.761	0	-0.948	0	-137298.089	-71092.774	61.314	107.973954
957-168	957-169	179-56-38	331-38-51	2.000	1.760	0	-0.950	0	-137296.329	-71093.724	59.416	104.572160
957-169	957-170	179-18-02	330-56-53	2.000	1.748	0	-0.971	0	-137294.581	-71094.695	57.495	100.501260
957-170	957-171	179-07-07	330-04-00	2.000	1.733	1	-0.998	0	-137292.847	-71095.693	55.526	96.282084
957-171	957-69	179-07-06	329-11-06	0.430	0.369	0	-0.220	0	-137292.478	-71095.913	54.308	20.039652
957-69	957-84	97-12-51	246-23-57	25.063	-10.034	0	-22.967	0	-137302.512	-71118.880	31.121	-312.268114
957-84	957-3	252-29-01	318-52-58	6.200	4.671	0	-4.077	0	-137297.841	-71122.957	4.077	19.043667
合計	測角数 = 11	1620-00-00		89.533	0.000	0	0.001	-1			倍面積	519.610962
											面積	259.8054810
											地積	259.80

座標面積計算書 (倍横距法)

495 [街区名: 957]
 [地番 : 957(13)]

点名	点名	内角	方向角	辺長	dx	*	dy	*	X	Y	DMD	2A
957-84	957-3		318-52-58						-137297.841	-71122.957		
957-3	957-4	79-09-16	218-02-14	9.415	-7.415	-1	-5.801	0	-137305.257	-71128.758	-5.801	43.020216
957-4	957-85	89-55-05	127-57-19	9.986	-6.142	0	7.874	0	-137311.399	-71120.884	-3.728	22.897376
957-85	957-68	25-38-20	73-35-39	31.743	8.965	1	30.451	0	-137302.433	-71090.433	34.597	310.196702
957-68	957-166	78-00-50	331-36-29	0.935	0.823	-1	-0.445	0	-137301.611	-71090.878	64.603	53.103666
957-166	957-167	180-05-44	331-42-13	2.000	1.761	0	-0.948	0	-137299.850	-71091.826	63.210	111.312810
957-167	957-168	180-00-00	331-42-13	2.000	1.761	0	-0.948	0	-137298.089	-71092.774	61.314	107.973954
957-168	957-169	179-56-38	331-38-51	2.000	1.760	0	-0.950	0	-137296.329	-71093.724	59.416	104.572160
957-169	957-170	179-18-02	330-56-53	2.000	1.748	0	-0.971	0	-137294.581	-71094.695	57.495	100.501260
957-170	957-171	179-07-07	330-04-00	2.000	1.733	1	-0.998	0	-137292.847	-71095.693	55.526	96.282084
957-171	957-69	179-07-06	329-11-06	0.430	0.369	0	-0.220	0	-137292.478	-71095.913	54.308	20.039652
957-69	957-84	97-12-51	246-23-57	25.063	-10.034	0	-22.967	0	-137302.512	-71118.880	31.121	-312.268114
957-84	957-3	252-29-01	318-52-58	6.200	4.671	0	-4.077	0	-137297.841	-71122.957	4.077	19.043667
合計	測角数 = 12	1800-00-00		93.772	0.000	0	0.000	0			倍面積	676.675433
											面積	338.3377165
											地積	338.33

座標面積計算書 (倍横距法)

489 [街区名 : 957]
 [地番 : 957 (14-1)]

点名	点名	内角	方向角	辺長	d x	*	d y	*	X	Y	DMD	2 A
957-99	957-161		334-29-48						-137310.496	-71086.270		
957-161	957-162	179-10-32	333-40-20	1.998	1.791	0	-0.886	0	-137308.705	-71087.156	-0.886	-1.586826
957-162	957-163	179-24-16	333-04-36	2.000	1.783	1	-0.906	1	-137306.921	-71088.061	-2.677	-4.775768
957-163	957-164	179-32-20	332-36-56	2.001	1.777	-1	-0.920	-1	-137305.145	-71088.982	-4.503	-7.997328
957-164	957-165	179-20-45	331-57-41	2.004	1.769	0	-0.942	0	-137303.376	-71089.924	-6.366	-11.261454
957-165	957-68	179-38-48	331-36-29	1.072	0.943	0	-0.510	1	-137302.433	-71090.433	-7.817	-7.371431
957-68	957-100	101-59-10	253-35-39	24.832	-7.014	0	-23.821	0	-137309.447	-71114.254	-32.147	225.479058
957-100	957-101	93-48-46	167-24-25	8.580	-8.374	0	1.871	-1	-137317.821	-71112.384	-54.098	453.016652
957-101	957-99	90-00-00	77-24-25	27.416	5.977	1	26.756	1	-137311.843	-71085.627	-25.471	-152.265638
957-99	957-161	77-05-23	334-29-48	1.493	1.348	-1	-0.643	0	-137310.496	-71086.270	0.643	0.866121
合計	測角数 = 9	1260-00-00		71.396	0.000	0	-0.001	1			倍面積	494.103386
											面積	247.0516930
											地積	247.05

座標面積計算書 (倍横距法)

489 [街区名 : 957]
 [地番 : 957(14-2)]

点名	点名	内角	方向角	辺長	dx	*	dy	*	X	Y	DMD	2A
957-67	957-156		337-37-59						-137319.597	-71082.151		
957-156	957-157	179-12-58	336-50-57	1.999	1.838	0	-0.786	0	-137317.759	-71082.937	-0.786	-1.444668
957-157	957-158	179-24-03	336-15-00	1.988	1.820	-1	-0.801	1	-137315.940	-71083.737	-2.372	-4.314668
957-158	957-159	179-15-29	335-30-29	2.002	1.822	1	-0.830	-1	-137314.117	-71084.568	-4.003	-7.297469
957-159	957-160	179-39-18	335-09-47	1.999	1.814	0	-0.840	1	-137312.303	-71085.407	-5.673	-10.290822
957-160	957-99	179-20-01	334-29-48	0.509	0.459	1	-0.219	-1	-137311.843	-71085.627	-6.732	-3.096720
957-99	957-101	102-54-37	257-24-25	27.416	-5.977	-1	-26.756	-1	-137317.821	-71112.384	-33.709	201.512402
957-101	957-102	90-00-00	167-24-25	9.441	-9.214	0	2.058	1	-137327.035	-71110.325	-58.407	538.162098
957-102	957-67	90-00-00	77-24-25	29.310	6.390	1	28.605	0	-137320.644	-71081.720	-27.743	-177.305513
957-67	957-156	80-13-34	337-37-59	1.133	1.048	-1	-0.431	0	-137319.597	-71082.151	0.431	0.451257
合計	測角数 = 9	1260-00-00		75.797	0.000	0	0.000	0			倍面積	536.375897
											面積	268.1879485
											地積	268.18

座標面積計算書 (倍横距法)

489 [街区名 : 957]
 [地番 : 957(14-3)]

点名	点名	内角	方向角	辺長	dx	*	dy	*	X	Y	DMD	2A
957-85	957-103		182-37-16						-137329.580	-71121.716		
957-103	957-102	74-47-09	77-24-25	11.672	2.545	0	11.391	0	-137327.035	-71110.325	11.391	28.990095
957-102	957-100	90-00-00	347-24-25	18.022	17.588	0	-3.929	0	-137309.447	-71114.254	18.853	331.586564
957-100	957-85	86-11-14	253-35-39	6.911	-1.952	0	-6.630	0	-137311.399	-71120.884	8.294	-16.189888
957-85	957-103	109-01-37	182-37-16	18.200	-18.181	0	-0.832	0	-137329.580	-71121.716	0.832	-15.126592
合計	測角数 = 4	360-00-00		54.805	0.000	0	0.000	0			倍面積	329.260179
											面積	164.6300895
											地積	164.63

489 [街区名 : 957]
 [地番 : 957(14-4)]

点名	点名	内角	方向角	辺長	dx	*	dy	*	X	Y	DMD	2A
957-103	957-85		2-37-16						-137311.399	-71120.884		
957-85	957-89	3-25-23	186-02-39	18.534	-18.431	0	-1.952	0	-137329.830	-71122.836	-1.952	35.977312
957-89	957-103	71-21-46	77-24-25	1.147	0.250	0	1.119	1	-137329.580	-71121.716	-2.784	-0.696000
957-103	957-85	105-12-51	2-37-16	18.200	18.181	0	0.832	0	-137311.399	-71120.884	-0.832	-15.126592
合計	測角数 = 3	180-00-00		37.881	0.000	0	-0.001	1			倍面積	20.154720
											面積	10.0773600
											地積	10.07

座標面積計算書 (倍横距法)

495 [街区名 : 957]
 [地番 : 957(14)]

点名	点名	内角	方向角	辺長	dx	*	dy	*	X	Y	DMD	2A
957-67	957-156		337-37-59						-137319.597	-71082.151		
957-156	957-157	179-12-58	336-50-57	1.999	1.838	0	-0.786	0	-137317.759	-71082.937	-0.786	-1.444668
957-157	957-158	179-24-03	336-15-00	1.988	1.820	-1	-0.801	1	-137315.940	-71083.737	-2.372	-4.314668
957-158	957-159	179-15-29	335-30-29	2.002	1.822	1	-0.830	-1	-137314.117	-71084.568	-4.003	-7.297469
957-159	957-160	179-39-18	335-09-47	1.999	1.814	0	-0.840	1	-137312.303	-71085.407	-5.673	-10.290822
957-160	957-161	179-20-01	334-29-48	2.002	1.807	0	-0.862	-1	-137310.496	-71086.270	-7.375	-13.326625
957-161	957-162	179-10-32	333-40-20	1.998	1.791	0	-0.886	0	-137308.705	-71087.156	-9.124	-16.341084
957-162	957-163	179-24-16	333-04-36	2.000	1.783	1	-0.906	1	-137306.921	-71088.061	-10.915	-19.472360
957-163	957-164	179-32-20	332-36-56	2.001	1.777	-1	-0.920	-1	-137305.145	-71088.982	-12.741	-22.628016
957-164	957-165	179-20-45	331-57-41	2.004	1.769	0	-0.942	0	-137303.376	-71089.924	-14.604	-25.834476
957-165	957-68	179-38-48	331-36-29	1.072	0.943	0	-0.510	1	-137302.433	-71090.433	-16.055	-15.139865
957-68	957-85	101-59-10	253-35-39	31.743	-8.965	-1	-30.451	0	-137311.399	-71120.884	-47.015	421.536490
957-85	957-89	112-27-00	186-02-39	18.534	-18.431	0	-1.952	0	-137329.830	-71122.836	-79.418	1463.753158
957-89	957-67	71-21-46	77-24-25	42.129	9.185	1	41.116	0	-137320.644	-71081.720	-40.254	-369.773244
957-67	957-156	80-13-34	337-37-59	1.133	1.048	-1	-0.431	0	-137319.597	-71082.151	0.431	0.451257
合計	測角数 = 14	2160-00-00		112.604	0.001	-1	-0.001	1			倍面積	1379.877608
											面積	689.9388040
											地積	689.93

座標面積計算書 (倍横距法)

495 [街区名 : 957]
 [地番 : 957(15-1)]

点名	点名	内角	方向角	辺長	dx	*	dy	*	X	Y	DMD	2A
957-66	957-9		77-22-21						-137333.878	-71079.136		
957-9	957-10	132-10-53	29-33-14	3.064	2.665	1	1.511	1	-137331.212	-71077.624	1.512	4.030992
957-10	957-151	130-35-28	340-08-42	2.156	2.028	0	-0.732	0	-137329.184	-71078.356	2.292	4.648176
957-151	957-152	178-57-32	339-06-14	2.158	2.016	0	-0.770	0	-137327.168	-71079.126	0.790	1.592640
957-152	957-153	180-08-49	339-15-03	2.156	2.016	1	-0.764	0	-137325.151	-71079.890	-0.744	-1.500648
957-153	957-154	179-06-55	338-21-58	1.997	1.856	0	-0.736	-1	-137323.295	-71080.627	-2.245	-4.166720
957-154	957-155	179-11-28	337-33-26	2.001	1.849	1	-0.764	0	-137321.445	-71081.391	-3.746	-6.930100
957-155	957-67	180-04-33	337-37-59	0.866	0.801	0	-0.330	1	-137320.644	-71081.720	-4.839	-3.876039
957-67	957-92	99-46-26	257-24-25	11.509	-2.509	-1	-11.232	0	-137323.154	-71092.952	-16.400	41.164000
957-92	957-66	89-57-58	167-22-23	13.485	-13.159	0	2.948	-1	-137336.313	-71090.005	-24.685	324.829915
957-66	957-9	89-59-58	77-22-21	11.138	2.435	0	10.869	0	-137333.878	-71079.136	-10.869	-26.466015
合計	測角数 = 10	1440-00-00		50.530	-0.002	2	0.000	0			倍面積	333.326201
											面積	166.6631005
											地積	166.66

座標面積計算書 (倍横距法)

495 [街区名 : 957]
 [地番 : 957(19)]

点名	点名	内角	方向角	辺長	dx	*	dy	*	X	Y	DMD	2A
957-61	957-5		217-55-13						-137328.033	-71146.502		
957-5	957-6	134-53-52	172-49-05	4.995	-4.956	0	0.624	0	-137332.989	-71145.878	0.624	-3.092544
957-6	957-7	135-06-15	127-55-20	17.246	-10.599	0	13.604	0	-137343.588	-71132.274	14.852	-157.416348
957-7	957-62	154-42-14	102-37-34	4.256	-0.930	-1	4.153	1	-137344.519	-71128.120	32.610	-30.359910
957-62	957-86	64-50-12	347-27-46	13.184	12.870	0	-2.862	0	-137331.649	-71130.982	33.902	436.318740
957-86	957-87	269-56-39	77-24-25	1.567	0.342	-1	1.529	1	-137331.308	-71129.452	32.570	11.106370
957-87	957-61	50-29-09	307-53-34	15.463	9.497	0	-12.203	0	-137321.811	-71141.655	21.897	207.955809
957-61	957-5	90-01-39	217-55-13	7.888	-6.223	1	-4.848	1	-137328.033	-71146.502	4.847	-30.158034
合計	測角数 = 7	900-00-00		64.599	0.001	-1	-0.003	3			倍面積	434.354083
											面積	217.1770415
											地積	217.17

座標面積計算書 (倍横距法)

495 [街区名 : 957]
 [地番 : 957 (20)]

点名	点名	内角	方向角	辺長	dx	*	dy	*	X	Y	DMD	2A
957-89	957-85		6-02-39						-137311.399	-71120.884		
957-85	957-4	121-54-40	307-57-19	9.986	6.142	0	-7.874	0	-137305.257	-71128.758	-7.874	-48.362108
957-4	957-61	89-57-54	217-55-13	20.985	-16.554	0	-12.897	0	-137321.811	-71141.655	-28.645	474.189330
957-61	957-87	89-58-21	127-53-34	15.463	-9.497	0	12.203	0	-137331.308	-71129.452	-29.339	278.632483
957-87	957-89	129-30-51	77-24-25	6.780	1.478	0	6.617	-1	-137329.830	-71122.836	-10.520	-15.548560
957-89	957-85	108-38-14	6-02-39	18.534	18.431	0	1.952	0	-137311.399	-71120.884	-1.952	-35.977312
合計	測角数 = 5	540-00-00		71.748	0.000	0	0.001	-1			倍面積	652.933833
											面積	326.4669165
											地積	326.46

座標面積計算書 (倍横距法)

495 [街区名 : 957]
 [地番 : 957 (21)]

点名	点名	内角	方向角	辺長	dx	*	dy	*	X	Y	DMD	2A
957-65	957-66		77-22-21						-137336.313	-71090.005		
957-66	957-92	90-00-02	347-22-23	13.485	13.159	0	-2.948	1	-137323.154	-71092.952	-2.947	-38.779573
957-92	957-91	90-02-02	257-24-25	2.431	-0.530	0	-2.373	0	-137323.684	-71095.325	-8.267	4.381510
957-91	957-65	89-57-58	167-22-23	13.486	-13.160	0	2.948	0	-137336.844	-71092.377	-7.692	101.226720
957-65	957-66	89-59-58	77-22-21	2.431	0.531	0	2.372	0	-137336.313	-71090.005	-2.372	-1.259532
合計	測角数 = 4	360-00-00		31.833	0.000	0	-0.001	1			倍面積	65.569125
											面積	32.7845625
											地積	32.78

座標面積計算書 (倍横距法)

495 [街区名 : 957]
 [地番 : 957(22)]

点名	点名	内角	方向角	辺長	dx	*	dy	*	X	Y	DMD	2A
957-64	957-65		77-22-21						-137336.844	-71092.377		
957-65	957-91	90-00-02	347-22-23	13.486	13.160	0	-2.948	0	-137323.684	-71095.325	-2.948	-38.795680
957-91	957-90	90-02-02	257-24-25	21.918	-4.779	0	-21.391	0	-137328.463	-71116.716	-27.287	130.404573
957-90	957-64	89-59-10	167-23-35	13.500	-13.175	1	2.947	-1	-137341.637	-71113.770	-45.732	602.473368
957-64	957-65	89-58-46	77-22-21	21.923	4.793	0	21.393	0	-137336.844	-71092.377	-21.393	-102.536649
合計	測角数 = 4	360-00-00		70.827	-0.001	1	0.001	-1			倍面積	591.545612
											面積	295.7728060
											地積	295.77

座標面積計算書 (倍横距法)

495 [街区名 : 957]
 [地番 : 957 (23)]

点名	点名	内角	方向角	辺長	dx	*	dy	*	X	Y	DMD	2A
957-64	957-90		347-23-35						-137328.463	-71116.716		
957-90	957-88	90-00-50	257-24-25	10.470	-2.283	1	-10.218	-1	-137330.745	-71126.935	-10.219	23.319758
957-88	957-63	90-03-21	167-27-46	13.506	-13.184	0	2.932	0	-137343.929	-71124.003	-17.506	230.799104
957-63	957-64	89-54-35	77-22-21	10.487	2.293	-1	10.233	0	-137341.637	-71113.770	-4.341	-9.949572
957-64	957-90	90-01-14	347-23-35	13.500	13.175	-1	-2.947	1	-137328.463	-71116.716	2.946	38.810604
合計	測角数 = 4	360-00-00		47.963	0.001	-1	0.000	0			倍面積	282.979894
											面積	141.4899470
											地積	141.48

座標面積計算書 (倍横距法)

495 [街区名 : 957]
 [地番 : 957 (24)]

点名	点名	内角	方向角	辺長	dx	*	dy	*	X	Y	DMD	2A
957-86	957-62		167-27-46						-137344.519	-71128.120		
957-62	957-8	115-09-48	102-37-34	0.762	-0.167	1	0.744	-1	-137344.685	-71127.377	0.743	-0.123338
957-8	957-63	154-44-47	77-22-21	3.457	0.756	0	3.373	1	-137343.929	-71124.003	4.860	3.674160
957-63	957-88	90-05-25	347-27-46	13.506	13.184	0	-2.932	0	-137330.745	-71126.935	5.302	69.901568
957-88	957-86	89-56-39	257-24-25	4.147	-0.904	0	-4.047	0	-137331.649	-71130.982	-1.677	1.516008
957-86	957-62	90-03-21	167-27-46	13.184	-12.870	0	2.862	0	-137344.519	-71128.120	-2.862	36.833940
合計	測角数 = 5	540-00-00		35.056	-0.001	1	0.000	0			倍面積	111.802338
											面積	55.9011690
											地積	55.90