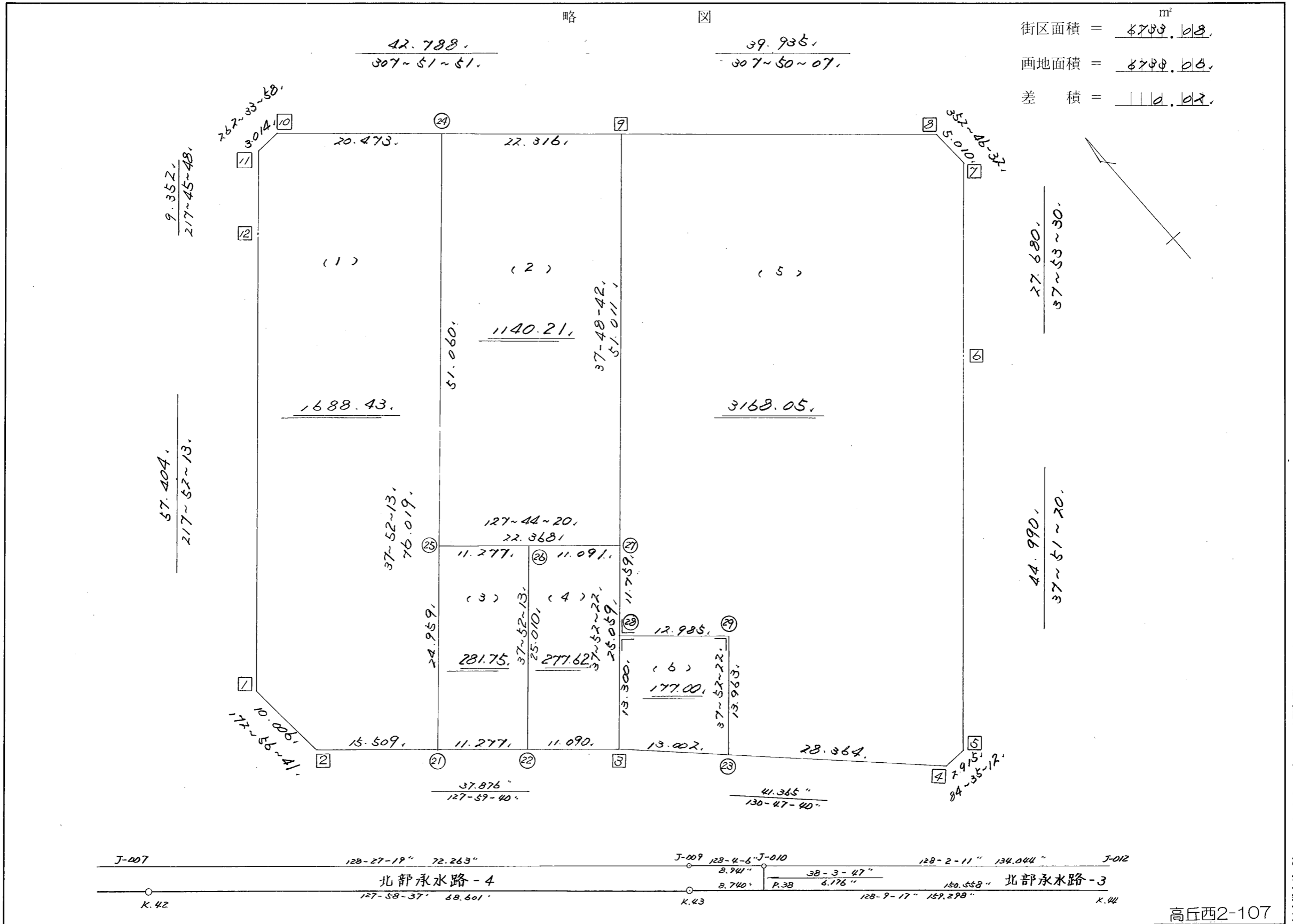


略 図

街区面積 =  $\frac{42.788}{307 \sim 51 \sim 51.}$  m<sup>2</sup>  
 画地面積 =  $\frac{39.935}{307 \sim 50 \sim 07.}$   
 差 積 =  $\frac{2.853}{307 \sim 51 \sim 51.}$



高丘西2-107

街区点番号 1 ~ 12 筆界点番号 21 ~ 29 画地番号 ( 1 ) ~ ( 6 )

不二総合コンサルタント株式会社

\* \* 面積計算 (倍横距法) \* \* (Work No.192) ワーク名: 111BL

| 地<br>器械点 | 番 : 111BL<br>視準点 | 内角        | 方向角       | 距離     | 緯距      | 経距      | X座標         | Y座標        | 倍横距     | 倍面積          |
|----------|------------------|-----------|-----------|--------|---------|---------|-------------|------------|---------|--------------|
| 111-1    | 111-2            | 135-04-28 | 172-56-41 | 10.006 | -9.930  | 1.229   | -137996.139 | -73411.253 | 1.229   | -12.203970   |
| 111-2    | 111-3            | 135-02-59 | 127-59-40 | 37.876 | -23.316 | 29.849  | -138019.455 | -73381.404 | 32.307  | -753.270012  |
| 111-3    | 111-4            | 182-48-00 | 130-47-40 | 41.365 | -27.026 | 31.316  | -138046.481 | -73350.088 | 93.472  | -2526.174272 |
| 111-4    | 111-5            | 133-47-32 | 84-35-12  | 2.915  | 0.275   | 2.902   | -138046.206 | -73347.186 | 127.690 | 35.114750    |
| 111-5    | 111-6            | 133-16-08 | 37-51-20  | 44.990 | 35.522  | 27.609  | -138010.684 | -73319.577 | 158.201 | 5619.615922  |
| 111-6    | 111-7            | 180-02-10 | 37-53-30  | 27.680 | 21.844  | 17.000  | -137988.840 | -73302.577 | 202.810 | 4430.181640  |
| 111-7    | 111-8            | 134-53-02 | 352-46-32 | 5.010  | 4.970   | -0.630  | -137983.870 | -73303.207 | 219.180 | 1089.324600  |
| 111-8    | 111-9            | 135-03-35 | 307-50-07 | 39.935 | 24.496  | -31.540 | -137959.374 | -73334.747 | 187.010 | 4580.996960  |
| 111-9    | 111-10           | 180-01-44 | 307-51-51 | 42.788 | 26.263  | -33.780 | -137933.111 | -73368.527 | 121.690 | 3195.944470  |
| 111-10   | 111-11           | 134-42-07 | 262-33-58 | 3.014  | -0.390  | -2.989  | -137933.501 | -73371.516 | 84.921  | -33.119190   |
| 111-11   | 111-12           | 135-11-50 | 217-45-48 | 9.352  | -7.393  | -5.727  | -137940.894 | -73377.243 | 76.205  | -563.383565  |
| 111-12   | 111-1            | 180-06-25 | 217-52-13 | 57.404 | -45.315 | -35.239 | -137986.209 | -73412.482 | 35.239  | -1596.855285 |
|          |                  |           |           |        |         |         |             |            | 倍面積     | 13466.172048 |
|          |                  |           |           |        |         |         |             |            | 面積      | 6733.0860240 |
|          |                  |           |           |        |         |         |             |            | 坪数      | 2036.75      |

\* \* 面積計算 (倍横距法) \* \* (Work No.193) ワーク名: 111BL-1

| 地<br>器械点 | 番 : 111BL-1<br>視準点 | 内角        | 方向角       | 距離     | 緯距      | 経距      | X座標         | Y座標        | 倍横距     | 倍面積          |
|----------|--------------------|-----------|-----------|--------|---------|---------|-------------|------------|---------|--------------|
| 111-1    | 111-2              | 135-04-28 | 172-56-41 | 10.006 | -9.930  | 1.229   | -137996.139 | -73411.253 | 1.229   | -12.203970   |
| 111-2    | 111-21             | 135-02-59 | 127-59-40 | 15.509 | -9.547  | 12.222  | -138005.686 | -73399.031 | 14.680  | -140.149960  |
| 111-21   | 111-24             | 89-52-33  | 37-52-13  | 76.019 | 60.009  | 46.667  | -137945.677 | -73352.364 | 73.569  | 4414.802121  |
| 111-24   | 111-10             | 89-59-38  | 307-51-51 | 20.473 | 12.566  | -16.163 | -137933.111 | -73368.527 | 104.073 | 1307.781318  |
| 111-10   | 111-11             | 134-42-07 | 262-33-58 | 3.014  | -0.390  | -2.989  | -137933.501 | -73371.516 | 84.921  | -33.119190   |
| 111-11   | 111-12             | 135-11-50 | 217-45-48 | 9.352  | -7.393  | -5.727  | -137940.894 | -73377.243 | 76.205  | -563.383565  |
| 111-12   | 111-1              | 180-06-25 | 217-52-13 | 57.404 | -45.315 | -35.239 | -137986.209 | -73412.482 | 35.239  | -1596.855285 |
|          |                    |           |           |        |         |         |             |            | 倍面積     | 3376.871469  |
|          |                    |           |           |        |         |         |             |            | 面積      | 1688.4357345 |
|          |                    |           |           |        |         |         |             |            | 坪数      | 510.75       |

\* \* 面積計算 (倍横距法) \* \* (Work No.194) ワーク名: 111BL-2

| 地番     | 器械点    | 視準点    | 内角       | 方向角       | 距離     | 緯距      | 経距      | X座標         | Y座標        | 倍横距    | 倍面積          |
|--------|--------|--------|----------|-----------|--------|---------|---------|-------------|------------|--------|--------------|
| 111-25 | 111-27 | 111-27 | 89-52-07 | 127-44-20 | 22.368 | -13.691 | 17.689  | -137999.674 | -73366.020 | 17.689 | -242.180099  |
| 111-27 | 111-9  | 111-9  | 90-04-22 | 37-48-42  | 51.011 | 40.300  | 31.273  | -137959.374 | -73334.747 | 66.651 | 2686.035300  |
| 111-9  | 111-24 | 111-24 | 90-03-09 | 307-51-51 | 22.316 | 13.697  | -17.617 | -137945.677 | -73352.364 | 80.307 | 1099.964979  |
| 111-24 | 111-25 | 111-25 | 90-00-22 | 217-52-13 | 51.060 | -40.306 | -31.345 | -137985.983 | -73383.709 | 31.345 | -1263.391570 |
|        |        |        |          |           |        |         |         |             |            | 倍面積    | 2280.428610  |
|        |        |        |          |           |        |         |         |             |            | 面積     | 1140.2143050 |
|        |        |        |          |           |        |         |         |             |            | 坪数     | 344.91       |

\* \* 面積計算 (倍横距法) \* \* (Work No.195) ワーク名: 111BL-3

| 地番     | 器械点    | 視準点      | 内角        | 方向角    | 距離      | 緯距      | 経距          | X座標        | Y座標    | 倍横距         | 倍面積         |
|--------|--------|----------|-----------|--------|---------|---------|-------------|------------|--------|-------------|-------------|
| 111-21 | 111-22 | 90-07-27 | 127-59-40 | 11.277 | -6.942  | 8.888   | -138012.628 | -73390.143 | 8.888  | -61.700496  |             |
| 111-22 | 111-26 | 89-52-33 | 37-52-13  | 25.010 | 19.742  | 15.352  | -137992.886 | -73374.791 | 33.128 | 654.012976  |             |
| 111-26 | 111-25 | 89-52-07 | 307-44-20 | 11.277 | 6.903   | -8.918  | -137985.983 | -73383.709 | 39.562 | 273.096486  |             |
| 111-25 | 111-21 | 90-07-53 | 217-52-13 | 24.959 | -19.703 | -15.322 | -138005.686 | -73399.031 | 15.322 | -301.889366 |             |
|        |        |          |           |        |         |         |             |            |        | 倍面積         | 563.519600  |
|        |        |          |           |        |         |         |             |            |        | 面積          | 281.7598000 |
|        |        |          |           |        |         |         |             |            |        | 坪数          | 85.23       |

\* \* 面積計算 (倍横距法) \* \* (Work No.196) ワーク名: 111BL-4

| 地番     | 器械点    | 視準点    | 内角       | 方向角       | 距離     | 緯距      | 経距      | X座標         | Y座標        | 倍横距    | 倍面積         |
|--------|--------|--------|----------|-----------|--------|---------|---------|-------------|------------|--------|-------------|
| 111-22 | 111-3  | 111-3  | 90-07-27 | 127-59-40 | 11.090 | -6.827  | 8.739   | -138019.455 | -73381.404 | 8.739  | -59.661153  |
| 111-3  | 111-27 | 111-27 | 89-52-42 | 37-52-22  | 25.059 | 19.781  | 15.384  | -137999.674 | -73366.020 | 32.862 | 650.043222  |
| 111-27 | 111-26 | 111-26 | 89-51-58 | 307-44-20 | 11.091 | 6.788   | -8.771  | -137992.886 | -73374.791 | 39.475 | 267.956300  |
| 111-26 | 111-22 | 111-22 | 90-07-53 | 217-52-13 | 25.010 | -19.742 | -15.352 | -138012.628 | -73390.143 | 15.352 | -303.079184 |
|        |        |        |          |           |        |         |         |             |            | 倍面積    | 555.259185  |
|        |        |        |          |           |        |         |         |             |            | 面積     | 277.6295925 |
|        |        |        |          |           |        |         |         |             |            | 坪数     | 83.98       |

\* \* 面積計算 (倍横距法) \* \* (Work No.197) ワーク名: 111BL-5

| 地<br>器械点 | 番 : 111BL-5<br>視準点 | 内角        | 方向角       | 距離     | 緯距      | 経距      | X座標         | Y座標        | 倍横距     | 倍面積          |
|----------|--------------------|-----------|-----------|--------|---------|---------|-------------|------------|---------|--------------|
| 111-23   | 111-4              | 92-55-18  | 130-47-40 | 28.364 | -18.531 | 21.473  | -138046.481 | -73350.088 | 21.473  | -397.916163  |
| 111-4    | 111-5              | 133-47-32 | 84-35-12  | 2.915  | 0.275   | 2.902   | -138046.206 | -73347.186 | 45.848  | 12.608200    |
| 111-5    | 111-6              | 133-16-08 | 37-51-20  | 44.990 | 35.522  | 27.609  | -138010.684 | -73319.577 | 76.359  | 2712.424398  |
| 111-6    | 111-7              | 180-02-10 | 37-53-30  | 27.680 | 21.844  | 17.000  | -137988.840 | -73302.577 | 120.968 | 2642.424992  |
| 111-7    | 111-8              | 134-53-02 | 352-46-32 | 5.010  | 4.970   | -0.630  | -137983.870 | -73303.207 | 137.338 | 682.569860   |
| 111-8    | 111-9              | 135-03-35 | 307-50-07 | 39.935 | 24.496  | -31.540 | -137959.374 | -73334.747 | 105.168 | 2576.195328  |
| 111-9    | 111-27             | 89-58-35  | 217-48-42 | 51.011 | -40.300 | -31.273 | -137999.674 | -73366.020 | 42.355  | -1706.906500 |
| 111-27   | 111-28             | 180-03-40 | 217-52-22 | 11.759 | -9.282  | -7.219  | -138008.956 | -73373.239 | 3.863   | -35.856366   |
| 111-28   | 111-29             | 90-00-00  | 127-52-22 | 12.985 | -7.972  | 10.250  | -138016.928 | -73362.989 | 6.894   | -54.958968   |
| 111-29   | 111-23             | 270-00-00 | 217-52-22 | 13.963 | -11.022 | -8.572  | -138027.950 | -73371.561 | 8.572   | -94.480584   |
|          |                    |           |           |        |         |         |             |            | 倍面積     | 6336.104197  |
|          |                    |           |           |        |         |         |             |            | 面積      | 3168.0520985 |
|          |                    |           |           |        |         |         |             |            | 坪数      | 958.33       |

\* \* 面積計算 (倍横距法) \* \* (Work No.198) ワーク名: 111BL-6

| 地<br>器械点 | 番 : 111BL-6<br>視準点 | 内角       | 方向角       | 距離     | 緯距      | 経距      | X座標         | Y座標        | 倍横距    | 倍面積         |
|----------|--------------------|----------|-----------|--------|---------|---------|-------------|------------|--------|-------------|
| 111-3    | 111-23             | 92-55-18 | 130-47-40 | 13.002 | -8.495  | 9.843   | -138027.950 | -73371.561 | 9.843  | -83.616285  |
| 111-23   | 111-29             | 87-04-42 | 37-52-22  | 13.963 | 11.022  | 8.572   | -138016.928 | -73362.989 | 28.258 | 311.459676  |
| 111-29   | 111-28             | 90-00-00 | 307-52-22 | 12.985 | 7.972   | -10.250 | -138008.956 | -73373.239 | 26.580 | 211.895760  |
| 111-28   | 111-3              | 90-00-00 | 217-52-22 | 13.300 | -10.499 | -8.165  | -138019.455 | -73381.404 | 8.165  | -85.724335  |
|          |                    |          |           |        |         |         |             |            | 倍面積    | 354.014816  |
|          |                    |          |           |        |         |         |             |            | 面積     | 177.0074080 |
|          |                    |          |           |        |         |         |             |            | 坪数     | 53.54       |