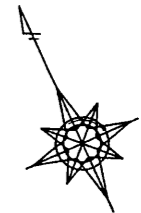
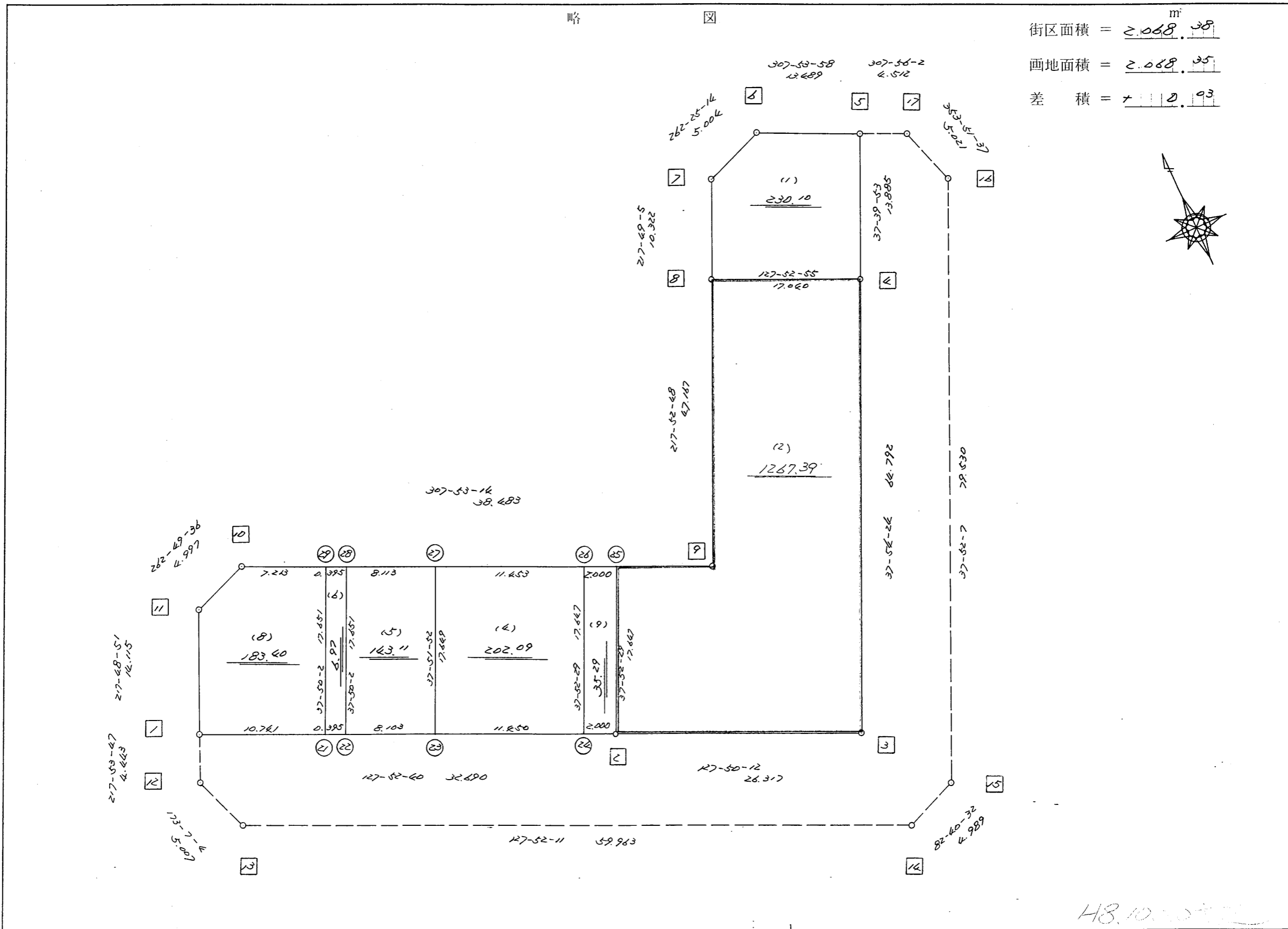


略 図

街区面積 = 2,068.38 m²
 画地面積 = 2,068.35
 差 積 = 0.03



街区点番号 1 ~ 17 筆界点番号 21 ~ 31 画地番号 1 ~ 9

H.B. 10.10.12

不二綜合工務株式会社

<< H.7 高丘・葵 地区 >>

| ※ ※ 面積計算 (倍横距法) ※ ※ | | | | | ワーク名: 843BL | | | | | |
|---------------------|--------|-----------|-----------|--------|-------------|---------|-------------|------------|---------|--------------|
| 器械点 | 視準点 | 夾角 | 方向角 | 距離 | 緯距 | 経距 | X座標 | Y座標 | 倍横距 | 倍面積 |
| 843-11 | 843-1 | | 217-48-51 | | | | -137698.506 | -71385.890 | | |
| 843-1 | 843-2 | 90-03-49 | 127-52-40 | 32.690 | -20.071 | 25.803 | -137718.577 | -71360.087 | 25.803 | -517.892013 |
| 843-2 | 843-3 | 179-57-32 | 127-50-12 | 26.317 | -16.143 | 20.784 | -137734.720 | -71339.303 | 72.390 | -1168.591770 |
| 843-3 | 843-4 | 90-04-12 | 37-54-24 | 64.792 | 51.122 | 39.807 | -137683.598 | -71299.496 | 132.981 | 6798.254682 |
| 843-4 | 843-5 | 179-45-29 | 37-39-53 | 13.885 | 10.991 | 8.484 | -137672.607 | -71291.012 | 181.272 | 1992.360552 |
| 843-5 | 843-6 | 90-14-05 | 307-53-58 | 13.489 | 8.286 | -10.644 | -137664.321 | -71301.656 | 179.112 | 1484.122032 |
| 843-6 | 843-7 | 134-31-16 | 262-25-14 | 5.004 | -0.660 | -4.960 | -137664.981 | -71306.616 | 163.508 | -107.915280 |
| 843-7 | 843-8 | 135-23-51 | 217-49-05 | 10.322 | -8.154 | -6.329 | -137673.135 | -71312.945 | 152.219 | -1241.193726 |
| 843-8 | 843-9 | 180-03-43 | 217-52-48 | 47.167 | -37.229 | -28.961 | -137710.364 | -71341.906 | 116.929 | -4353.149741 |
| 843-9 | 843-10 | 270-00-26 | 307-53-14 | 38.483 | 23.633 | -30.372 | -137686.731 | -71372.278 | 57.596 | 1361.166268 |
| 843-10 | 843-11 | 134-56-22 | 262-49-36 | 4.997 | -0.624 | -4.958 | -137687.355 | -71377.236 | 22.266 | -13.893984 |
| 843-11 | 843-1 | 134-59-15 | 217-48-51 | 14.115 | -11.151 | -8.654 | -137698.506 | -71385.890 | 8.654 | -96.500754 |
| | | | | | | | | | 倍面積 | 4136.766266 |
| | | | | | | | | | 面積 | 2068.383133 |

<< H.7 高丘・葵 地区 >>

| * * 面積計算 (倍横距法) * | | | | | * * ワーク名: 843BL-1 | | | | | |
|-------------------|-------|-----------|-----------|--------|-------------------|---------|-------------|------------|--------|-------------|
| 器械点 | 視準点 | 夾角 | 方向角 | 距離 | 緯距 | 経距 | X座標 | Y座標 | 倍横距 | 倍面積 |
| 843-7 | 843-8 | | 217-49-05 | | | | -137673.135 | -71312.945 | | |
| 843-8 | 843-4 | 90-03-50 | 127-52-55 | 17.040 | -10.463 | 13.449 | -137683.598 | -71299.496 | 13.449 | -140.716887 |
| 843-4 | 843-5 | 89-46-58 | 37-39-53 | 13.885 | 10.991 | 8.484 | -137672.607 | -71291.012 | 35.382 | 388.883562 |
| 843-5 | 843-6 | 90-14-05 | 307-53-58 | 13.489 | 8.286 | -10.644 | -137664.321 | -71301.656 | 33.222 | 275.277492 |
| 843-6 | 843-7 | 134-31-16 | 262-25-14 | 5.004 | -0.660 | -4.960 | -137664.981 | -71306.616 | 17.618 | -11.627880 |
| 843-7 | 843-8 | 135-23-51 | 217-49-05 | 10.322 | -8.154 | -6.329 | -137673.135 | -71312.945 | 6.329 | -51.606666 |
| | | | | | | | | | 倍面積 | 460.209621 |
| | | | | | | | | | 面積 | 230.1048105 |

<< H.7 高丘・葵 地区 >>

| * * 面積計算 (倍横距法) * | | | | | * * ワーク名: 843BL-2 | | | | | |
|-------------------|--------|-----------|-----------|--------|-------------------|---------|-------------|------------|---------|--------------|
| 器械点 | 視準点 | 夾角 | 方向角 | 距離 | 緯距 | 経距 | X座標 | Y座標 | 倍横距 | 倍面積 |
| 843-25 | 843-2 | | 217-52-29 | | | | -137718.577 | -71360.087 | | |
| 843-2 | 843-3 | 89-57-43 | 127-50-12 | 26.317 | -16.143 | 20.784 | -137734.720 | -71339.303 | 20.784 | -335.516112 |
| 843-3 | 843-4 | 90-04-12 | 37-54-24 | 64.792 | 51.122 | 39.807 | -137683.598 | -71299.496 | 81.375 | 4160.052750 |
| 843-4 | 843-8 | 89-58-31 | 307-52-55 | 17.040 | 10.463 | -13.449 | -137673.135 | -71312.945 | 107.733 | 1127.210379 |
| 843-8 | 843-9 | 89-59-53 | 217-52-48 | 47.167 | -37.229 | -28.961 | -137710.364 | -71341.906 | 65.323 | -2431.909967 |
| 843-9 | 843-25 | 270-00-26 | 307-53-14 | 9.309 | 5.717 | -7.347 | -137704.647 | -71349.253 | 29.015 | 165.878755 |
| 843-25 | 843-2 | 89-59-15 | 217-52-29 | 17.647 | -13.930 | -10.834 | -137718.577 | -71360.087 | 10.834 | -150.917620 |
| | | | | | | | | | 倍面積 | 2534.798185 |
| | | | | | | | | | 面積 | 1267.3990925 |

座標面積計算書 (倍横距法)

448 [街区名 : 843]
 [地番 : 843 (2-1)]

| 点名 | 点名 | 内角 | 方向角 | 辺長 | dx | * | dy | * | X | Y | DMD | 2A |
|--------|----------|-----------|-----------|----------|---------|----|---------|----|-------------|------------|---------|-------------|
| 843-32 | 843-3 ✓ | | 127-50-12 | | | | | | -137734.720 | -71339.303 | | |
| 843-3 | 843-33 ✓ | 90-04-12 | 37-54-24 | 28.946 ✓ | 22.839 | -1 | 17.784 | -1 | -137711.882 | -71321.520 | 17.783 | 406.128154 |
| 843-33 | 843-34 ✓ | 90-00-00 | 307-54-24 | 17.023 ✓ | 10.459 | 0 | -13.431 | 0 | -137701.423 | -71334.951 | 22.135 | 231.509965 |
| 843-34 | 843-9 ✓ | 89-58-24 | 217-52-48 | 11.328 ✓ | -8.941 | 0 | -6.956 | 1 | -137710.364 | -71341.906 | 1.749 | -15.637809 |
| 843-9 | 843-35 ✓ | 270-00-26 | 307-53-14 | 4.123 ✓ | 2.532 | 0 | -3.254 | 0 | -137707.832 | -71345.160 | -8.460 | -21.420720 |
| 843-35 | 843-32 ✓ | 89-56-58 | 217-50-12 | 17.642 ✓ | -13.933 | -1 | -10.822 | 0 | -137721.766 | -71355.982 | -22.536 | 314.016624 |
| 843-32 | 843-3 ✓ | 90-00-00 | 127-50-12 | 21.119 ✓ | -12.955 | 1 | 16.679 | 0 | -137734.720 | -71339.303 | -16.679 | 216.059766 |
| 合計 | 測角数 = 6 | 720-00-00 | | 100.181 | 0.001 | -1 | 0.000 | 0 | | | 倍面積 | 1130.655980 |
| | | | | | | | | | | | 面積 | 565.3279900 |
| | | | | | | | | | | | 地積 | 565.32 ✓ |

448 [街区名 : 843]
 [地番 : 843 (2-2)]

| 点名 | 点名 | 内角 | 方向角 | 辺長 | dx | * | dy | * | X | Y | DMD | 2A |
|--------|----------|-----------|-----------|----------|---------|---|---------|---|-------------|------------|---------|-------------|
| 843-33 | 843-4 ✓ | | 37-54-24 | | | | | | -137683.598 | -71299.496 | | |
| 843-4 | 843-8 ✓ | 89-58-31 | 307-52-55 | 17.040 ✓ | 10.463 | 0 | -13.449 | 0 | -137673.135 | -71312.945 | -13.449 | -140.716887 |
| 843-8 | 843-34 ✓ | 89-59-53 | 217-52-48 | 35.840 ✓ | -28.288 | 0 | -22.006 | 0 | -137701.423 | -71334.951 | -48.904 | 1383.396352 |
| 843-34 | 843-33 ✓ | 90-01-36 | 127-54-24 | 17.023 ✓ | -10.459 | 0 | 13.431 | 0 | -137711.882 | -71321.520 | -57.479 | 601.172861 |
| 843-33 | 843-4 ✓ | 90-00-00 | 37-54-24 | 35.847 ✓ | 28.284 | 0 | 22.024 | 0 | -137683.598 | -71299.496 | -22.024 | -622.926816 |
| 合計 | 測角数 = 4 | 360-00-00 | | 105.750 | 0.000 | 0 | 0.000 | 0 | | | 倍面積 | 1220.925510 |
| | | | | | | | | | | | 面積 | 610.4627550 |
| | | | | | | | | | | | 地積 | 610.46 ✓ |

座標面積計算書 (倍横距法)

448 [街区名 : 843]
 [地番 : 843 (3)]

| 点名 | 点名 | 内角 | 方向角 | 辺長 | dx | * | dy | * | X | Y | DMD | 2A |
|--------|----------|-----------|-----------|----------|---------|---|---------|---|-------------|------------|---------|------------|
| 843-35 | 843-25 / | | 307-53-14 | | | | | | -137704.647 | -71349.253 | | |
| 843-25 | 843-2 / | 89-59-15 | 217-52-29 | 17.647 / | -13.930 | 0 | -10.834 | 0 | -137718.577 | -71360.087 | -10.834 | 150.917620 |
| 843-2 | 843-32 / | 89-57-43 | 127-50-12 | 5.198 / | -3.189 | 0 | 4.105 | 0 | -137721.766 | -71355.982 | -17.563 | 56.008407 |
| 843-32 | 843-35 / | 90-00-00 | 37-50-12 | 17.642 / | 13.933 | 1 | 10.822 | 0 | -137707.832 | -71345.160 | -2.636 | -36.730024 |
| 843-35 | 843-25 / | 90-03-02 | 307-53-14 | 5.186 / | 3.185 | 0 | -4.093 | 0 | -137704.647 | -71349.253 | 4.093 | 13.036205 |
| 合計 | 測角数 = 4 | 360-00-00 | | 45.673 | -0.001 | 1 | 0.000 | 0 | | | 倍面積 | 183.232208 |
| | | | | | | | | | | | 面積 | 91.6161040 |
| | | | | | | | | | | | 地積 | 91.61 |

<< H.7 高丘・葵 地区 >>

| * * 面積計算 (倍横距法) * | | | | | * * ワーク名: 843BL-4 | | | | | |
|-------------------|--------|----------|-----------|--------|-------------------|---------|-------------|------------|--------|-------------|
| 器械点 | 視準点 | 夾角 | 方向角 | 距離 | 緯距 | 経距 | X座標 | Y座標 | 倍横距 | 倍面積 |
| 843-27 | 843-23 | | 217-51-52 | | | | -137710.319 | -71370.703 | | |
| 843-23 | 843-24 | 90-00-48 | 127-52-40 | 11.450 | -7.030 | 9.037 | -137717.349 | -71361.666 | 9.037 | -63.530110 |
| 843-24 | 843-26 | 89-59-49 | 37-52-29 | 17.647 | 13.930 | 10.835 | -137703.419 | -71350.831 | 28.909 | 402.702370 |
| 843-26 | 843-27 | 90-00-45 | 307-53-14 | 11.453 | 7.033 | -9.039 | -137696.386 | -71359.870 | 30.705 | 215.948265 |
| 843-27 | 843-23 | 89-58-38 | 217-51-52 | 17.649 | -13.933 | -10.833 | -137710.319 | -71370.703 | 10.833 | -150.936189 |
| | | | | | | | | | 倍面積 | 404.184336 |
| | | | | | | | | | 面積 | 202.092168 |

<< H.7 高丘・葵 地区 >>

| * * 面積計算 (倍横距法) * | | | | | * * ワーク名: 843BL-5 | | | | | |
|-------------------|--------|----------|-----------|--------|-------------------|---------|-------------|------------|--------|-------------|
| 器械点 | 視準点 | 夾角 | 方向角 | 距離 | 緯距 | 経距 | X座標 | Y座標 | 倍横距 | 倍面積 |
| 843-28 | 843-22 | | 217-50-02 | | | | -137705.344 | -71377.100 | | |
| 843-22 | 843-23 | 90-02-38 | 127-52-40 | 8.103 | -4.975 | 6.397 | -137710.319 | -71370.703 | 6.397 | -31.825075 |
| 843-23 | 843-27 | 89-59-12 | 37-51-52 | 17.649 | 13.933 | 10.833 | -137696.386 | -71359.870 | 23.627 | 329.194991 |
| 843-27 | 843-28 | 90-01-22 | 307-53-14 | 8.113 | 4.983 | -6.403 | -137691.403 | -71366.273 | 28.057 | 139.808031 |
| 843-28 | 843-22 | 89-56-48 | 217-50-02 | 17.651 | -13.941 | -10.827 | -137705.344 | -71377.100 | 10.827 | -150.939207 |
| | | | | | | | | | 倍面積 | 286.238740 |
| | | | | | | | | | 面積 | 143.119370 |

<< H.7 高丘・葵 地区 >>

| * * 面積計算 (倍横距法) * | | | | | * * ワーク名: 843BL-6 | | | | | |
|-------------------|--------|----------|-----------|--------|-------------------|---------|-------------|------------|--------|-------------|
| 器械点 | 視準点 | 夾角 | 方向角 | 距離 | 緯距 | 経距 | X座標 | Y座標 | 倍横距 | 倍面積 |
| 843-29 | 843-21 | | 217-50-02 | | | | -137705.101 | -71377.412 | | |
| 843-21 | 843-22 | 90-02-38 | 127-52-40 | 0.395 | -0.243 | 0.312 | -137705.344 | -71377.100 | 0.312 | -0.075816 |
| 843-22 | 843-28 | 89-57-22 | 37-50-02 | 17.651 | 13.941 | 10.827 | -137691.403 | -71366.273 | 11.451 | 159.638391 |
| 843-28 | 843-29 | 90-03-12 | 307-53-14 | 0.395 | 0.242 | -0.312 | -137691.161 | -71366.585 | 21.966 | 5.315772 |
| 843-29 | 843-21 | 89-56-48 | 217-50-02 | 17.651 | -13.940 | -10.827 | -137705.101 | -71377.412 | 10.827 | -150.928380 |
| | | | | | | | | | 倍面積 | 13.949967 |
| | | | | | | | | | 面積 | 6.9749835 |

<< H.7 高丘・葵 地区 >>

| * * 面積計算 (倍横距法) * | | | | | * * ワーク名: 843BL-8 | | | | | |
|-------------------|--------|-----------|-----------|--------|-------------------|--------|-------------|------------|--------|------------|
| 器械点 | 視準点 | 夾角 | 方向角 | 距離 | 緯距 | 経距 | X座標 | Y座標 | 倍横距 | 倍面積 |
| 843-11 | 843-1 | | 217-48-51 | | | | -137698.506 | -71385.890 | | |
| 843-1 | 843-21 | 90-03-49 | 127-52-40 | 10.741 | -6.595 | 8.478 | -137705.101 | -71377.412 | 8.478 | -55.912410 |
| 843-21 | 843-29 | 89-57-22 | 37-50-02 | 17.651 | 13.940 | 10.827 | -137691.161 | -71366.585 | 27.783 | 387.295020 |
| 843-29 | 843-10 | 90-03-12 | 307-53-14 | 7.213 | 4.430 | -5.693 | -137686.731 | -71372.278 | 32.917 | 145.822310 |
| 843-10 | 843-11 | 134-56-22 | 262-49-36 | 4.997 | -0.624 | -4.958 | -137687.355 | -71377.236 | 22.266 | -13.893984 |
| 843-11 | 843-1 | 134-59-15 | 217-48-51 | 14.115 | -11.151 | -8.654 | -137698.506 | -71385.890 | 8.654 | -96.500754 |
| | | | | | | | | | 倍面積 | 366.810182 |
| | | | | | | | | | 面積 | 183.405091 |

<< H.7 高丘・葵 地区 >>

| * * 面積計算 (倍横距法) * | | | | | * * ワーク名: 843BL-9 | | | | | |
|-------------------|--------|----------|-----------|--------|-------------------|---------|-------------|------------|--------|-------------|
| 器械点 | 視準点 | 夾角 | 方向角 | 距離 | 緯距 | 経距 | X座標 | Y座標 | 倍横距 | 倍面積 |
| 843-26 | 843-24 | | 217-52-29 | | | | -137717.349 | -71361.666 | | |
| 843-24 | 843-2 | 90-00-11 | 127-52-40 | 2.000 | -1.228 | 1.579 | -137718.577 | -71360.087 | 1.579 | -1.939012 |
| 843-2 | 843-25 | 89-59-49 | 37-52-29 | 17.647 | 13.930 | 10.834 | -137704.647 | -71349.253 | 13.992 | 194.908560 |
| 843-25 | 843-26 | 90-00-45 | 307-53-14 | 2.000 | 1.228 | -1.578 | -137703.419 | -71350.831 | 23.248 | 28.548544 |
| 843-26 | 843-24 | 89-59-15 | 217-52-29 | 17.647 | -13.930 | -10.835 | -137717.349 | -71361.666 | 10.835 | -150.931550 |
| | | | | | | | | | 倍面積 | 70.586542 |
| | | | | | | | | | 面積 | 35.293271 |