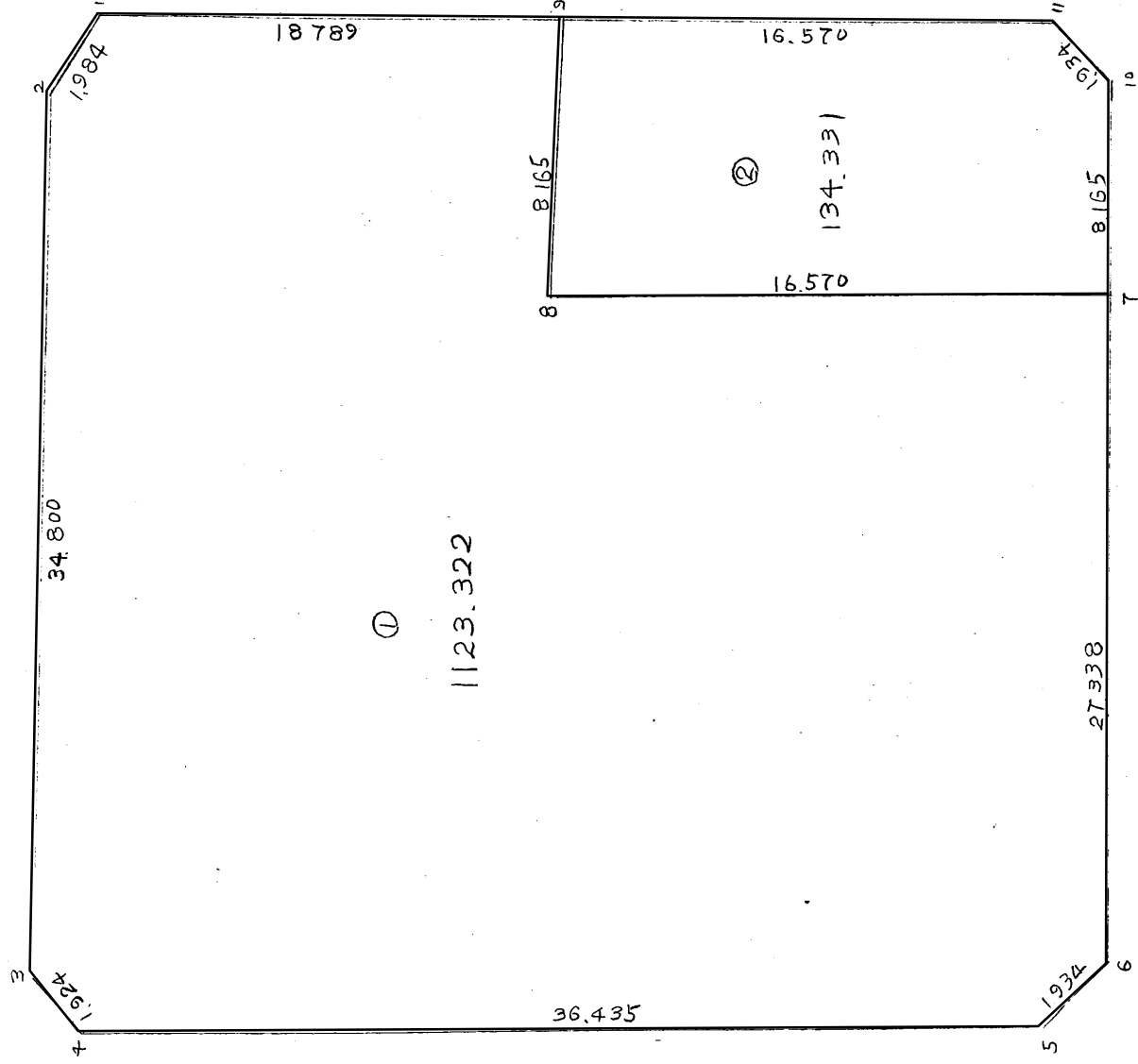


5 B. L



街廓原子一覽表用紙 (NO. 5BL)

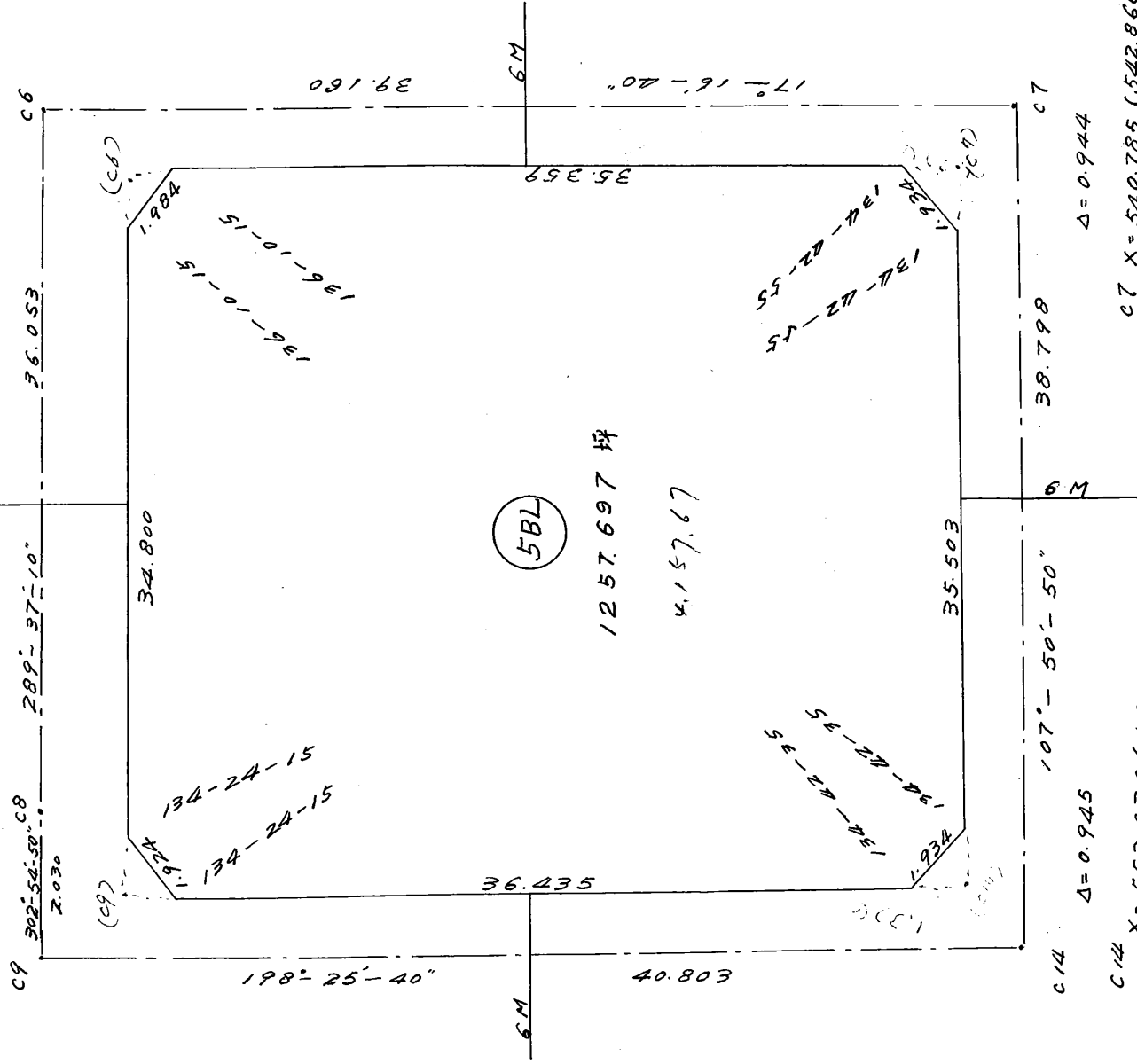
略 5 B.L

図

坪  
 計算面積 = 1261.276  
 角切面積 = 3.779  
 換地面積 = 1257.697

C9 X= 591.387 (588.314) C8  
 Y= 434.599 (435.274) Y= 590.284  
 $\Delta = 0.945$

C6 X= 578.178 (576.629)  
 Y= 470.263 (468.054)  
 $\Delta = 0.945$



C14  $107^{\circ} - 50' - 50''$   
 $\Delta = 0.945$   
 C14 X= 552.676 (553.747)  
 Y= 421.701 (423.757)

C7 X= 540.785 (542.866)  
 Y= 458.632 (457.551)  
 $\Delta = 0.944$

# 街廓点坐標及街廓面積計算簿

街廓番号 (No. 5BL )

点	方位角(A)	距離(S)	cosA	sinA	x	y	(3) 複緯距	(4) 複經距	(1) × (4)	(2) × (3)
			(1) S cosA	(2) S sinA						
			254876	297005	578 170	470 263				
c6	197-16-40	2 202	- 2 103	- 0 644	576 07	469 609				
(c6)	289-37-10	1 651	324771	- 941944	576 629	468 054				
	"	"	+ 0 554	- 1 555						
(c9)	"	34 800	"	"	+ 588 314	+ 425 274	+ 11 685	- 32 780	- 383 034	- 383 034
			242723	216 109						
(c10)	198-24-40	26 434	- 30 567	- 11 517	543 747	423 757	- 11 197	- 77 077	+ 2664 321	+ 128 956
			306 480	241877						
(c7)	107-12-40	24 503	- 10 881	+ 33 794	442 866	457 551	- 56 645	- 54 800	+ 596 279	- 1944 261
			254876	297005						
(c6)	17-16-40	24 359	+ 33 763	+ 10 503	576 629	468 054	- 33 763	- 10 503	- 354 613	- 354 613
点檢点坐標計算								Σ	- 737 647	+ 128 956
									+ 260 600	- 2651 908
								倍面積	2522 953	2522 952
								面積	1261 476	1261 476
									1261.476 坪	

街廓諸元計算用紙

街廓番号 (No 5B.L)

中心点番号	c 6	c 9	c 14	c 7		
夹角 $\alpha =$	92.20.20 $\checkmark$	88.48.30 $\checkmark$	89.25.10 $\checkmark$	89.25.50 $\checkmark$		
(街路半幅) $l_1 =$	1.650 $\checkmark$	2.200 $\checkmark$	1.650 $\checkmark$	1.650 $\checkmark$		
$\sin \alpha =$	0.999165 $\checkmark$	0.999784 $\checkmark$	0.999949 $\checkmark$	0.999951 $\checkmark$		
$(l_1 \div \sin \alpha) L_1 =$	1.651 $\checkmark$	2.200 $\checkmark$	1.650 $\checkmark$	1.650 $\checkmark$		
$\cos \alpha =$	0.040858 $\checkmark$	0.020797 $\checkmark$	0.010132 $\checkmark$	0.009939 $\checkmark$		
$(L_1 \times \cos \alpha) d_1 =$	-0.067 $\checkmark$	+0.046 $\checkmark$	+0.017 $\checkmark$	+0.016 $\checkmark$		
(街路半幅) $l_2 =$	2.200 $\checkmark$	1.650 $\checkmark$	1.650 $\checkmark$	1.650 $\checkmark$		
$\sin \alpha =$						
$(l_2 \div \sin \alpha) L_2 =$	2.202 $\checkmark$	1.650 $\checkmark$	1.650 $\checkmark$	1.650 $\checkmark$		
$\cos \alpha =$						
$(L_2 \times \cos \alpha) d_2 =$	-0.090 $\checkmark$	+0.034 $\checkmark$	+0.017 $\checkmark$	+0.016 $\checkmark$		
$\frac{\alpha}{2} =$	46-10-15 $\checkmark$	44-24-15 $\checkmark$	44-42-35 $\checkmark$	44-42-55 $\checkmark$		
(角切長の $\frac{1}{2}$ ) $\bar{C}^c =$	1.984 $\checkmark$	1.924 $\checkmark$	1.934 $\checkmark$	1.934 $\checkmark$		
$\sin \frac{\alpha}{2} =$	0.992 $\checkmark$	0.962 $\checkmark$	0.967 $\checkmark$	0.967 $\checkmark$		
(尊除長) $C \div \sin \frac{\alpha}{2} =$	1.375 $\checkmark$	1.375 $\checkmark$	1.375 $\checkmark$	1.375 $\checkmark$		
$\cot \frac{\alpha}{2} =$	0.959944 $\checkmark$	1.021017 $\checkmark$	1.010184 $\checkmark$	1.009988 $\checkmark$		
(面積) $C^2 \times \cot \frac{\alpha}{2} =$	0.945 $\checkmark$	0.945 $\checkmark$	0.945 $\checkmark$	0.944 $\checkmark$		



